

OptiGuard™

OG-T-K10



MONITORED THRU-BEAM PHOTO EYE

The Miller Edge OptiGuard™ monitored photo optic system provides thru-beam entrapment protection for door and gate operators. The emitter and receiver can be mounted vertically or horizontally to meet your safeguarding needs. When an obstruction interrupts the beam, a signal is sent to motor controls to stop and/or reverse motion. The durable mounting bracket/hoods offer additional protection against debris and serve as a weather and sun shield. Key components include an operating range of 100 feet and easy alignment through a visible beam of light.



APPLICATIONS

- Automated gates
- Motorized doors

FEATURES

- 100 ft. range
- Normally closed and 10K outputs
- Emitter and receiver can be mounted vertically or horizontally
- Durable mounting bracket/hoods provide added protection against debris and serves as weather and sun shields
- IP67 housing protects against moisture and dust
- UL 325 Recognized Component
- 2-year warranty






OptiGuard™

OG-T-K10

GENERAL SPECIFICATIONS

PERFORMANCE

Operating Range	6-100 ft. (2-30 m)
Number of Elements	1 element
Maximum Ambient Light	>100,000 lux
Aperture Angle	±3°
Operating Temperature	-13°F to +131°F, (-25°C to +55°C)
Agency Approvals	 us UL 325 Recognized Component

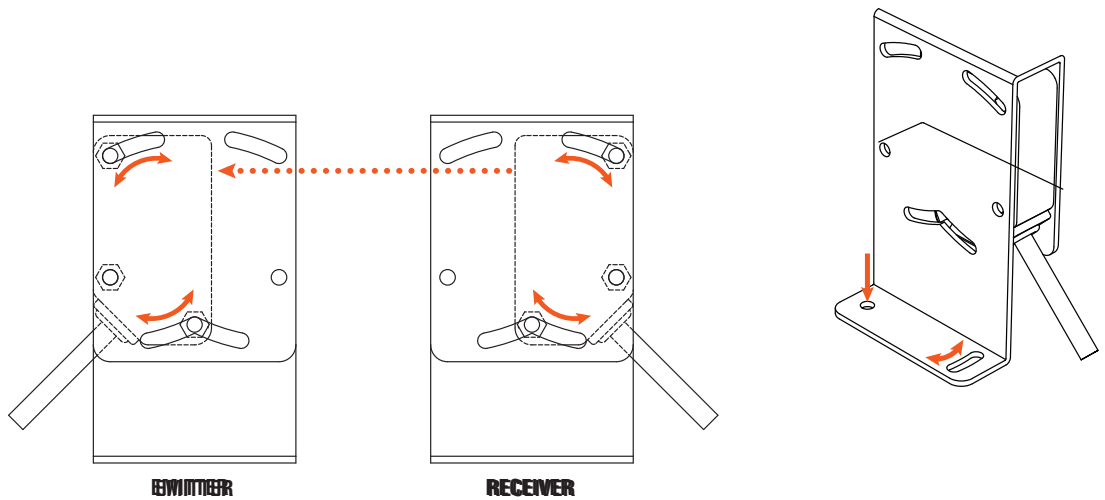
ELECTRICAL

Power Source	12-40 volts DC, 24-48 volts AC
Current Consumption	<40 mA
Relay Rating	2 A @ 40 volts AC/DC
Output	N.C., 10K

	EMITTER	RECEIVER	MOUNTING BRACKET/HOOD
PHYSICAL			
Dimensions	0.75 W x 2.5 H x 1.38 D in. (19 x 64 x 35 mm)	0.75 W x 2.5 H x 1.38 D in. (19 x 64 x 35 mm)	1.75 W x 4 H x 2.38 D in. (44 x 102 x 60 mm)
Weight	5.5 oz.	5.5 oz.	6.5 oz.
Housing Material	Polycarbonate, PMMA lens	Polycarbonate, PMMA lens	Galvanized steel
LED Indicators	1: Power	2: Power, alignment	-
Cable Length	6 ft., 20 AWG cable (attached)	6 ft., 20 AWG cable (attached)	-
Mounting Orientation	Horizontal, vertical	Horizontal, vertical	Horizontal, vertical
Degree of Protection	IP67	IP67	-

INCLUDED

- (1) Emitter
- (1) Receiver
- (2) Mounting bracket/hoods



Alignment of OptiGuard™ Emitter and Receiver