



ME120 & MGO20 SensingEdge

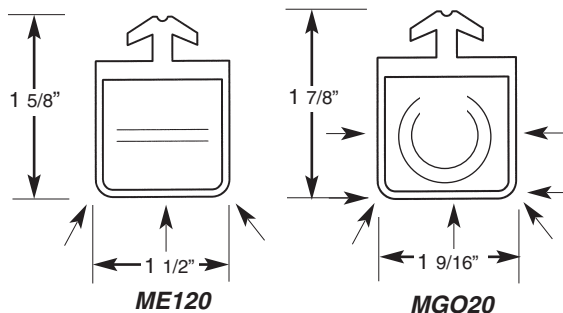


Sliding Doors & Gates • Vertical Lift & Pivot Gates • Elevator Doors
Material Handling Systems • Rolling Shutters

About the ME120 and MGO20...

When touched lightly, these pressure sensitive edges immediately send an electrical to your controls to stop, and/or reverse operations. Designed for use in a wide variety of applications, these SensingEdges are extremely durable and can be used indoor or out. They are resistant to water, flame, and common greases and oils.

Specifications



Color: Black

Length: per specification to nearest 1/4"

Sensitivity: 4psi - standard

Activation: Orange arrows indicate direction of sensitivity

Lead Wire: 2 ft. SJTO 18 gauge - standard

Wire Outlet Location: specify right hand, left hand, or end

Electrical Diagram: 2 wire N.O. configuration

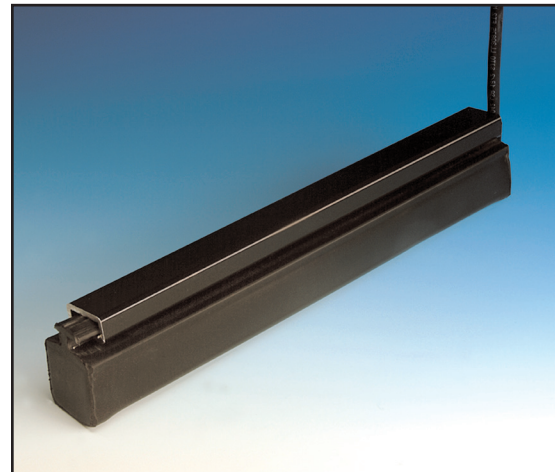
Contact Element: Alumaglas®

Electrical Requirements: 24 volt AC/DC 1/2 amp

Channel: Black extruded PVC or Aluminum

Sensing Edge: Extruded flexible PVC

Temperature Range: -30° F to + 155°F



Options

- Color: OSHA Yellow (ME120Y / MGO20Y), White (ME120W / MGO20W)
- 4 wire self monitoring (strongly recommended)
- Soft ends
- Coil Cord attached
- 4 wire fail-safe Control Panel (MFSC-100)
- 4 wire intrinsically-safe Control Panel (FSIS-25-4)
- Pneumatic (MEP120)
- Air-Wave (MAW120)
- Mounting Channel Design (see side 2)

Installation

Place mounting channel in desired location. Drill 1/8" hole through channel into mounting surface every 24". Slide SensingEdge into mounting channel. Attach channel to surface with screws and wire to controls. If mounting in vertical position, place a screw through the side of the mounting channel. This will support the SensingEdge and prevent it from slipping out of position.

Note: For safe operation, use maximum 24 volt AC or DC power. For detailed installation and wiring instructions, please contact MillerEdge, Inc.

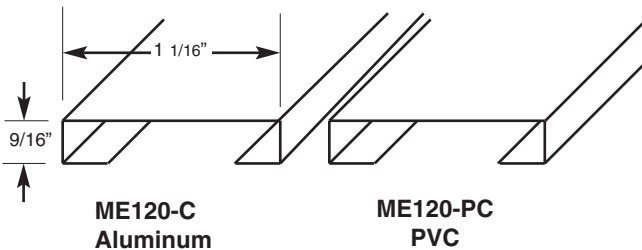
Contact MillerEdge to ensure compatibility with your operating controls. U.S. Patent#4,396,814 Canadian Patent #1,048,006. Other patents apply.

SensingEdge



Mounting Channel Options

These optional mounting channels may be used with Model ME120 and MGO20.



Care of the ME120 and MGO20...

Minimal care is required for the SensingEdge since they are manufactured with only the most durable materials and the highest quality control standards. SensingEdges should be tested and examined at least once a month for cuts or punctures which could damage internal components.

Check wiring to be sure connections are secure. When properly maintained, Miller SensingEdges offer years of trouble free operation.

Warranty

We will replace within one year of shipment from our factory, any SensingEdge subject to normal use which is found to have defective materials or workmanship, as determined solely by our factory representative. Replacements will be shipped to you freight collect. This warranty is void where evidence of misuse or abuse is present.

NOTES