

DAK- USVD (KIT)

ULTRASONIC VEHICLE DETECTOR

The EMX DAK-USVD KIT is an advanced ultrasonic drive-thru alert system designed for a wide range of applications including parking, access control, car wash, banking, and fast food drive-thrus. This comprehensive kit includes both the **CHIME-100 sound module** and the **USVD-4X ultrasonic vehicle detector**, ensuring a seamless and efficient drive-thru experience.

The **CHIME-100 sound module** is specifically engineered for loud work environments and provides an audible chime when a vehicle is detected by the USVD-4X. With adjustable volume control and a maximum volume of 100 dBA at 5 ft away, the CHIME-100 is easily heard in noisy surroundings.

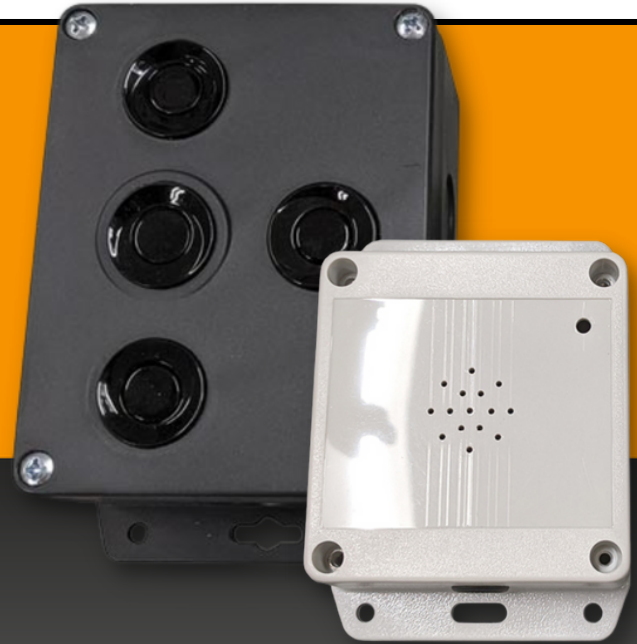
This compact device offers easy installation, 25 ft of durable cable for connecting to the USVD-4X, an output relay for daisy-chaining additional electronics, and a choice of 6 melodies.

The **USVD-4X ultrasonic vehicle detector**, offers hassle-free installation without the need for an inductive loop in the pavement. This versatile detector can be mounted on a post, order box, or the side of a building.

The USVD-4X features a detection head with 4 ultrasonic transducers connected to an internal microprocessor-based control board. It continuously scans the targeted location for vehicle presence and activates its output upon detection. The device operates on 2-24 VDC/AC and includes two Form C relay contacts for vehicle presence detection, as well as Pulse on Entry, Pulse on Exit, or both.

The EMX DAK-USVD full kitted product combines the best features of both the CHIME-100 sound module and the USVD-4X ultrasonic vehicle detector, delivering a reliable and user-friendly drive-thru alert system for various applications.

DAK USVD



scan here for more
information



EMX Industries, Inc.

5660 Transportation Blvd, Garfield Heights, OH 44125

Phone: 800 426 9912

Fax: 216 518 9884

Sales Inquiries: salessupport@emxinc.com

Technical Support: technical@emxinc.com

www.emxinc.com



ULTRASONIC VEHICLE DETECTOR

- Comprehensive drive-thru solution
- Wide application versatility
- Customizable audio alerts
- Easy, hassle-free installation
- Flexible relay options
- Ultrasonic technology
- Aux. relay, settings for pulse on entry, exit or both
- Output delay option for 1, 2 and 4 seconds



BANK



PARKING



CAR WASH



PHARMACY



FAST FOOD

USVD SPECS

Sensing Elements	4 ultrasonic transducers
Operating Range	1ft. – 5ft.
Response Time	2.0 seconds
Relay Output Configuration	2 SPDT (form C)
Relay Contact Rating	1A @ 24VDC
Power Indicator/No Vehicle	Green LED
Object In Range	Flashing Green LED on each input, continuous LED on DETECT
Supply Voltage	12-24 VDC/AC
Operating Current	60mA
Operating Temperature	-40°C-+85°C (-40°F-+182°F)
Dimensions Weight	5.7"(145mm) x 3.6"(90mm) x 2.3"(57mm)
Housing	0.6 lbs. (275g) ABS NEMA 4X
Connection	10 position terminal block

CHIME-100 SPECS

Supply Voltage	9 VDC
Dimensions	4.5" (114 mm) x 3.25" (83 mm) x 1.58" (40 mm)
Weight	0.35 lbs
Housing	Polycarbonate
Maximum Volume	100 dBA @ 5 ft
Melody Options	6
Included Cable	25 ft – 5 conductors (0.25" outer diameter)

ORDERING INFORMATION

- DAK-USVD Ultrasonic vehicle detector, includes cable grip

WARRANTY EMX INC. the product described herein for a period of 2 years under normal use and service from the date of sale to our customer. The product will be free from defects in material and workmanship. This warranty does not cover ordinary wear and tear, abuse, misuse, overloading, altered products, or damage caused by the purchaser from incorrect connections, or lightning damage. There is no warranty of merchantability. There are no warranties expressed, implied or any affirmation of fact or representation which extend beyond the description set forth herein. EMX Inc. sole responsibility and liability, and purchaser's exclusive remedy shall be limited to the repair or replacement at EMX's option of a part or parts not so conforming to the warranty. In no event shall EMX Inc. be liable for damages of any nature, including incidental or consequential damages, including but, not limited to any damages resulting from non-conformity defect in material or workmanship. Rev 3 12/06/2022

