

SUB UL/CSA

UNDERGROUND HYDRAULIC OPERATOR FOR SWING GATES



**UL 325
COMPLIANT**



• **A MODEL FOR EVERY NEED.**

→ Two versions available, for 125° and 180° opening angles.

• **SAFE USE.**

→ Crushing protection guaranteed by two adjustable bypass valves.

• **SIMPLER INSTALLATION.**

→ Maintenance is carried out without any need to raise or disassemble the gate.

→ The special foundation case makes it possible to remove the operator without taking off the gate leaf.

REFERENCE	DESCRIPTION	VOLTAGE	LEAF WEIGHT	LEAF LENGTH
P930012 00007	SUB R UL/CSA DX	120 V	up to 1750 lbs (~800 kg)	up to 11'6" (3.5 m)
P930012 00008	SUB R UL/CSA SX	120 V	up to 1750 lbs (~800 kg)	up to 11'6" (3.5 m)
P930010 00007	SUB G UL/CSA DX	120 V	up to 1750 lbs (~800 kg)	up to 11'6" (3.5 m)
P930010 00008	SUB G UL/CSA SX	120 V	up to 1750 lbs (~800 kg)	up to 11'6" (3.5 m)

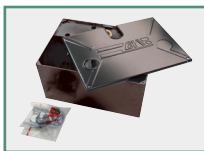
DX = Motor on right hand side of driveway from inside the property.

SX = Motor on left hand side of driveway from inside the property.

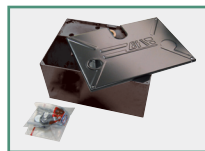
TECHNICAL FEATURES

	SUB R UL/CSA	SUB G UL/CSA
CONTROL PANEL	RIGEL 4 UL/CSA (suggested)	RIGEL 4 UL/CSA (suggested)
REVERSIBLE/IRREVERSIBLE OPERATOR	irreversible	irreversible
POWER SUPPLY	120 V, 60 Hz single-phase	120 V, 60 Hz single-phase
ABSORBED POWER	0.33 hp (250 W)	0.33 hp (250 W)
THERMAL PROTECTION	integrated	integrated
OPENING ANGLE	125°	180°
OPENING OR CLOSING TIME	14 s	33 s
SLOWDOWN	opening/closing	-
IMPACT REACTION	hydraulic clutch	hydraulic clutch
LOCK	hydraulic opening/closing	hydraulic opening/closing
MANUAL RELEASE	release key	release key
OPERATING CYCLE	intensive use	intensive use
ENVIRONMENTAL CONDITIONS	from 14°F (-10°C) to 140°F (+60°C)	from 14°F (-10°C) to 140°F (+60°C)
DEGREE OF PROTECTION	IP67	IP67
OPERATOR WEIGHT	48 lbs (~22 kg)	53 lbs (~24 kg)
DIMENSIONS	see drawing next page	see drawing next page
FUSE VALUE RIGEL 5 BOARD TRANSFORMER	2A T	2A T
FUSE VALUE RIGEL 5 BOARD LOGIC BOARD	1A T	1A T
FUSE VALUE RIGEL 4 BOARD TRANSFORMER	2A T	2A T
FUSE VALUE RIGEL 4 BOARD LOGIC BOARD	1A T	1A T

ACCESSORIES



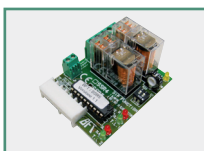
N733066 00001 - CPS DX
Bearing foundation case for SUB operator (right hand). Maintenance can be carried out without disassembling the gate.



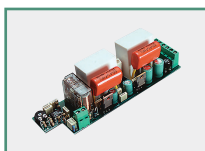
N733066 00002 - CPS SX
Bearing foundation case for SUB operator (left hand). Maintenance can be carried out without disassembling the gate.



N733092 - CPS G
Bearing foundation case for either left hand or right hand SUB G operator. Maintenance can be carried out without disassembling the gate.



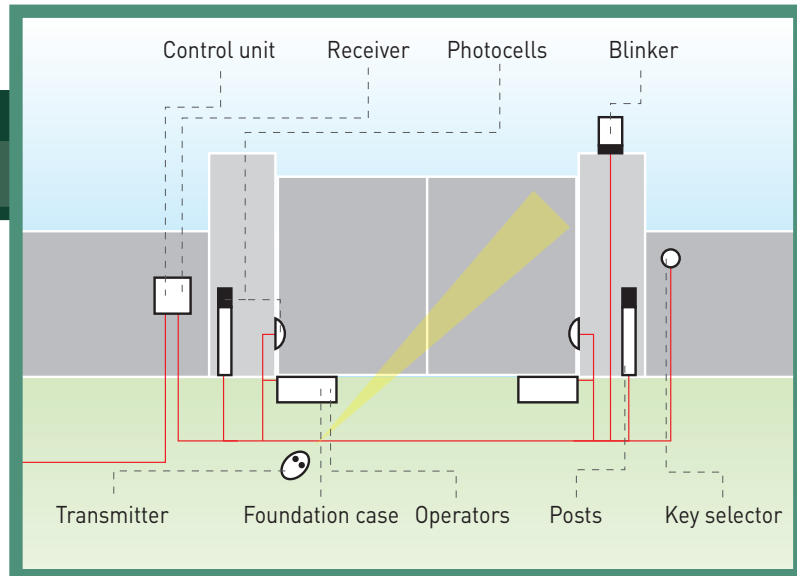
D111704 - SSR5
Traffic light and preheating board for RIGEL 5 control panel.



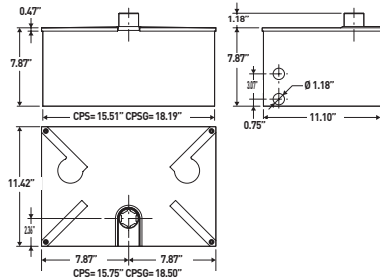
D113050/110 - SPL 120 V
Pre-heating board for 1 or 2 LUX, SUB, P4,5-P7 and E5 operators. Can be fitted inside control panels RIGEL 4 UL/CSA, ALCOR UL/CSA.



D610180 - CLS/52
Release key for LUX, PHOBOS BT, PHOBOS BT L and DEIMOS BT.



DIMENSIONS



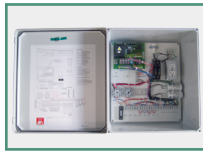
ACCESSORIES



D113236 00003 RIGEL 4 UL/CSA

• Control panel for one or two single phase 120V operators up to 0.5 hp (375 W) each. • This control panel

requires the torque setting to be on the operators. • 2 and 4 steps logic with timer to close and hold-to-run control. • Adjustable delay on opening and on closing. • Self-diagnosis through LED. • Quick wiring through plug-in terminal strips. • Plug-in connector for receiver. UL/CSA approved.



KERIG4C003U

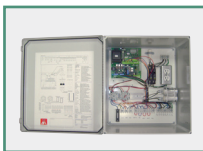
Pre-wired 16" x 18" (40 x 45 cm) enclosure box with RIGEL 4 UL/CSA control board. Features: 2 loop detector sockets (1 free exit, 1 safety), 1 test button, easy connection for motors and accessories, 2 120V power outlets, surge arrestor lightning protection, individual circuit breakers for control board and power outlets. NEMA 4x rated.



D113693 00001 RIGEL 5 120 V

• Control panel for one or two single-phase 120 V operators up to 0.8 hp (600 W) each. • Easy programming and diagnosis

through LCD display. • Torque and brakesetting. • ", 3 and 4 steps logic with timer to close and hold-to-run control. • Adjustable delay on opening and on closing. • Quick wiring through plug-in terminal strips. • Built-in rolling code receiver and plug-in connector for second receiver.



KERIG5C004U

Pre-wired 16" x 18" (40 x 45 cm) enclosure box with RIGEL 5 120V control board. Features: 2 loop detector sockets (1 free exit,

1 safety), 1 test button, easy connection for motors and accessories, 2 120V power outlets, surge arrestor lightning protection, individual circuit breakers for control board and power outlets. NEMA 4x rated.



KD113693 00001 - RIGEL 5 WITH CAPACITORS

Same features as Rigel 5 but with added capacitors for use on 120V Hydraulic operators.



N733066 00003 - FCS DX (RIGHT HAND) N733066 00004 - FCS SX (LEFT HAND)

New foundation box for SUB R with sliding hardware. SUBS do not need to be raised.



N733202 00001 - CID G

Foundation case for SUB G only.



N733201 00001

CID DX
Foundation case for SUB R DX



N733201 00002

CID SX
Foundation case for SUB R SX



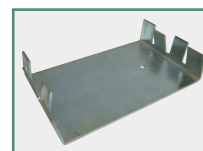
I101615 IDROLUX WINTER

Hydraulic oil for low temperatures, 2 lt can. Always use the same grade oil when refilling.



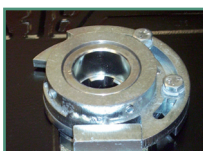
N728002 - BSC

SUB sliding arm.



D730177 - PFS

Foundation plate for SUB and SUB G.



SUBCPSAS - SUB R ADJUSTABLE STOP.

Easy to install and set adjustable stops for SUB R from 80 to 140 degrees



KN999411 - FCS KEY

Release key and holder for FCS foundation box.



BFT-1200MLKIT - 1200 LB MAGLOCK KIT

Magnetic lock Kit including bracket, relay and power supply. \$ 416.06