



# 1200LB MAGLOCKS WITH DS

1200 LB MAGLOCKS WITH ADJUSTABLE RELOCK TIME DELAY, LOCK (BOND) STATUS SENSOR, AND DOOR STATUS SENSOR



## LEARN MORE



click or scan

## CERTIFICATIONS \*



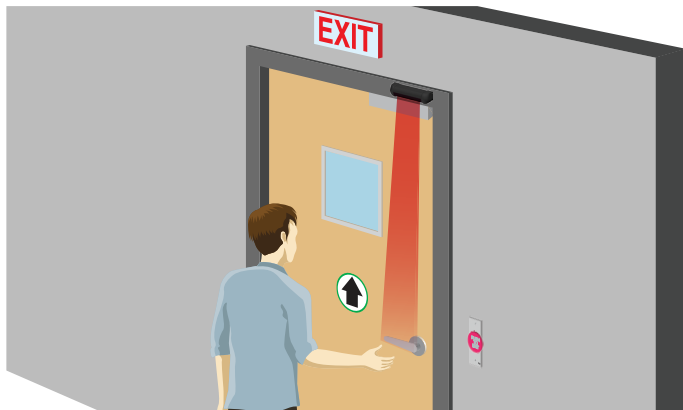
## DESCRIPTION

BEA's **1,200 LB MAGLOCKS WITH DS** provide a standards-compliant solution as part of an access control system for retail, healthcare, financial, education or storage facilities. The 1,200 lb holding force is ideal for mid- to high-level traffic in commercial buildings. The door status sensor can be used to monitor the door position, eliminating the need for a separate door switch.

BEA's electromagnetic locks provide reliability and durability in areas for authorized individuals or doorways leading to an emergency exit.

Common applications include access control or egress doors using a sensor or a switch to release the locking device.

The **1,200 LB MAGLOCKS WITH DS** can be used on hollow metal, wood, aluminum, glass and composite door materials and are available in surface mount single or double door configurations. Additionally, the adjustable zero to 90 second relock time delay and the lock (bond) status sensor allow configuration of the settings as needed.



### User-Configurable

Adjustable zero to 90 second relock time delay

### Enhanced Access Control / Monitoring

Lock (bond) status sensor with visible LED offers either normally open (NO) or normally closed (NC) output configuration

### UL 294 Listed\*

Listed for access control systems and must be used with a UL Listed power supply

### Anti-Tampering

The security screw on the front face blocks access to the bottom of the electromagnetic lock preventing tampering or dismounting

### Easy & Flexible Mounting

Mounting hardware like push / pull brackets and adapter plates offer flexible installation and convenient mounting options for various door stop dimensions

### Convenient Packages Available

Available in access control packages with sensor, logic module, actuator and maglock

\* This product is UL294-listed up to 1,000 lb static strength.

## TECHNICAL SPECIFICATIONS

### 10MAGLOCK1ULDS

|                                 |   |
|---------------------------------|---|
| <b>Lock</b>                     | Single  |
| <b>Input Voltage</b>            | 12 or 24 VDC  |
| <b>Relay Rating</b>             | 1.0 A @ 24 VDC resistive  |
| <b>Relay Power Factor</b>       | 1   |
| <b>Reed Switch Rating</b>       | Dry Contacts: 3W (switching contact 0.25 amps max, switching voltage 30VDC max; resistive load) |
| <b>Reed Switch Power Factor</b> | 1   |
| <b>Power Consumption</b>        | 500 mA @ 12 VDC<br>250 mA @ 24 VDC  |
| <b>Dimensions</b>               | 20.47" (W) x 2.87" (H) x 1.58" (D)  |
| <b>Certification</b>            | UL294 (up to 1,000 lb static strength)<br>File #BP10577   |
| <b>Operating Temperature</b>    | 32 – 120 °F   |
| <b>Operating Humidity</b>       | 0 – 85%   |

### 10MAGLOCK5ULDS

|                                 |   |
|---------------------------------|---|
| <b>Lock</b>                     | Double  |
| <b>Input Voltage</b>            | 12 or 24 VDC  |
| <b>Relay Rating</b>             | 1.0 A @ 24 VDC resistive  |
| <b>Relay Power Factor</b>       | 1   |
| <b>Reed Switch Rating</b>       | Dry Contacts: 3W (switching contact 0.25 amps max, switching voltage 30VDC max; resistive load) |
| <b>Reed Switch Power Factor</b> | 1   |
| <b>Power Consumption</b>        | 500 mA @ 12 VDC<br>250 mA @ 24 VDC each   |
| <b>Dimensions</b>               | 20.94" (W) x 2.87" (H) x 1.58" (D)  |
| <b>Certification</b>            | UL294 (up to 1,000 lb static strength)<br>File #BP10577   |
| <b>Operating Temperature</b>    | 32 – 120 °F   |
| <b>Operating Humidity</b>       | 0 – 85%   |

\*This product must be powered from a UL Listed, regulated, power-limited, power supply

\*\* Not for outdoor use

## PRODUCT SERIES



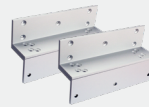
**10MAGLOCK1ULDS**  
1200 lb holding force / Single  
*UL294 Listed at 1000 lb static force*



**10MAGLOCK5ULDS**  
1200 lb holding force / Double  
*UL294 Listed at 1000 lb static force*



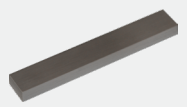
**10LZRBRMAG1UL**  
L & Z Bracket for 10MAGLOCK1UL/DS



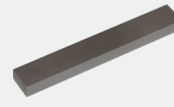
**10MAG5LZUL**  
(2) L & Z Bracket for 10MAGLOCK5UL/DS



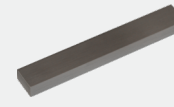
**10UBRACKETUL**  
Glass-door mounting kit



**10FILLER12UL**  
1/2" x 3/4" Filler Plate



**10FILLER34UL**  
3/4" x 3/4" Filler Plate



**10FILLER58UL**  
1/16" x 3/4" Filler Plate



**10RIMHOUSING1UL**  
Armature plate housing for 10MAGLOCK1UL



**10SPACER1UL**  
Vertical spacer bracket for 10MAGLOCK1UL



**10PS12-24**  
UL / ULC Listed power supply (1.75A)



**10PS12-24D**  
UL / ULC Listed power supply, backup circuit (1.75A)  
*(battery not included)*

**DISCLAIMER** Information is supplied upon the condition that the persons receiving it will make their own determination as to its suitability for their purposes prior to use. In no event will BEA be responsible for damages of any nature whatsoever resulting from the use of or reliance upon information from this document or the products to which the information refers. BEA has the right without liability to change descriptions and specifications at any time.

[WWW.BEASENSORS.COM](http://WWW.BEASENSORS.COM)



BEA AMERICAS / RIDC Park West / 100 Enterprise Drive / Pittsburgh, PA  
T 1-800-523-2462 / F 1-888-523-2462 / E info-us@BEAsensors.com

A Halma company