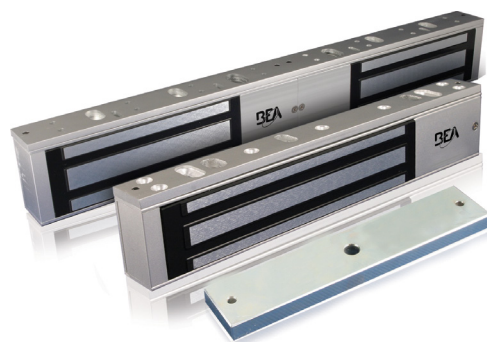




UL LISTED MAGLOCKS

600 LB MAGLOCKS WITH ADJUSTABLE RELOCK TIME DELAY & LOCK STATUS SENSOR



PRODUCT



[Go to the product page](#)

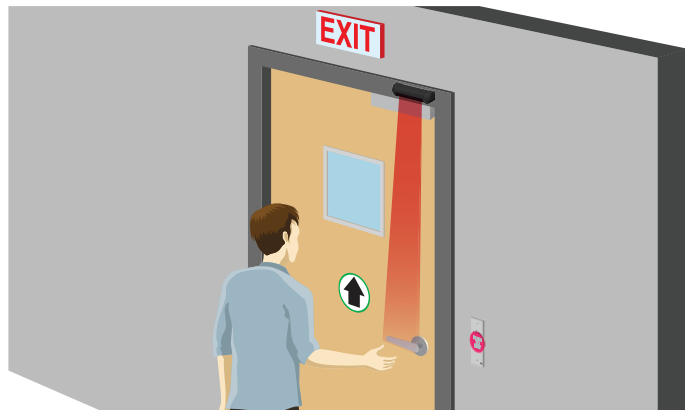
CERTIFICATIONS



DESCRIPTION

BEA's **UL LISTED MAGLOCKS** provide a standards compliant locking solution for retail, healthcare, banking and other high security facilities that require UL Listed security products. maglocks can be used on hollow metal, wood, aluminum, glass and composite door materials.

The **UL LISTED MAGLOCKS** are available in surface mount single or double door configurations, with holding force of 600. These locks include adjustable zero to 90 second relock time delay and a lock status sensor with visible LED.



Customizable

Adjustable zero to 90 second relock time delay

Enhanced Reliability

Lock status sensor with visible LED offers either normally open (NO) or normally closed (NC) output configurations

UL Listed

Input voltage of 12 / 24 VDC, must be used with UL Listed power supply

Mounting Accessories

Variety of mounting hardware available

Convenient Packages Available

Available in access control packages with request-to-exit sensor, logic module, actuator, power supply and maglock

TECHNICAL SPECIFICATIONS

10MAGLOCK3UL

| | |
|-----------------------|---------------------------------------|
| Lock | Single |
| Input Voltage | 12 or 24 VDC |
| Relay Rating | 1.0 A @ 24 VDC resistive |
| Reed Switch Rating | SPDT 0.5 amp @ 30 VAC / VDC resistive |
| Power Consumption | 505 mA @ 12 VDC 260 mA @ 24 VDC |
| Dimensions | 9.84" (W) x 1.65" (H) x 1.02" (D) |
| Certification | UL1034 |
| Operating Temperature | 14 – 131 °F |
| Operating Humidity | 0 – 95% |

10MAGLOCK6UL

| | |
|-----------------------|--|
| Lock | Double |
| Input Voltage | 12 or 24 VDC |
| Relay Rating | 1.0 A @ 24 VDC resistive |
| Reed Switch Rating | SPDT 0.5 amp @ 30 VAC / VDC resistive |
| Power Consumption | 505 x 2 mA @ 12 VDC 260 x 2 mA @ 24 VDC |
| Dimensions | 19.76" (W) x 1.65" (H) x 1.02" (D) |
| Certification | UL1034 |
| Operating Temperature | 14 – 131 °F |
| Operating Humidity | 0 – 95% |

*This product must be powered from a UL Listed, regulated, power-limited, power supply

** Not for outdoor use

PRODUCT SERIES



10MAGLOCK3UL
600 lb / Single



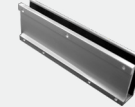
10MAGLOCK6UL
600 lb / Double



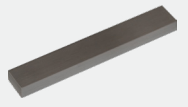
10LZBRMAG3UL
L & Z Bracket for
600 lb / Single



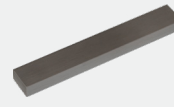
10MAG6LZUL
(2) L & Z Bracket for
600 lb / Double



10UBRACKETUL
Glass door
mounting kit



10FILLER34UL
¾" x ¾" Filler Plate



10FILLER58UL
½" x ¾" Filler Plate



10FILLER12UL
½" x ¾" Filler Plate



10SPACER3UL
Vertical spacer bracket
for single 600 lb



10RIMHOUSING3UL
Armature plate housing
for single 600 lb



10PS12-24
UL / ULC Listed power
supply (1.75A)



10PS12-24D
UL / ULC Listed power supply,
backup circuit (1.75A) (battery
not included)

DISCLAIMER Information is supplied upon the condition that the persons receiving it will make their own determination as to its suitability for their purposes prior to use. In no event will BEA be responsible for damages of any nature whatsoever resulting from the use of or reliance upon information from this document or the products to which the information refers. BEA has the right without liability to change descriptions and specifications at any time.

WWW.BEASENSORS.COM



BEA AMERICAS / RIDC Park West / 100 Enterprise Drive / Pittsburgh, PA
T 1-800-523-2462 / F 1-888-523-2462 / E info-us@BEAsensors.com

A Halma company