

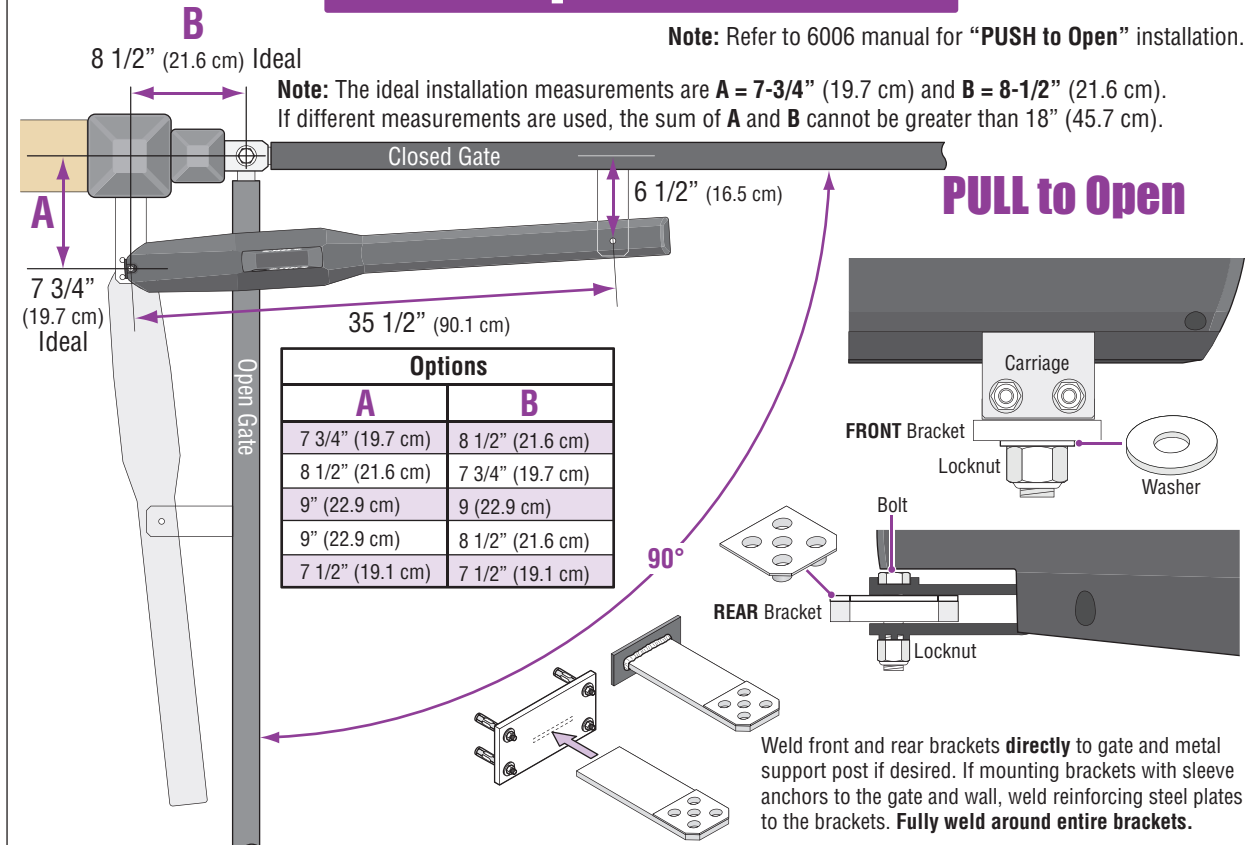
QUICKSTART "BASIC" GUIDELINES FOR MODEL 6006 - FOR A GATE UP TO 18 FEET, 600LBS AND "PULL TO OPEN"

UL 325 August
2018 Standard



120 S. Glasgow Avenue
Inglewood, California 90301
U.S.A.

"PULL to Open" Installation



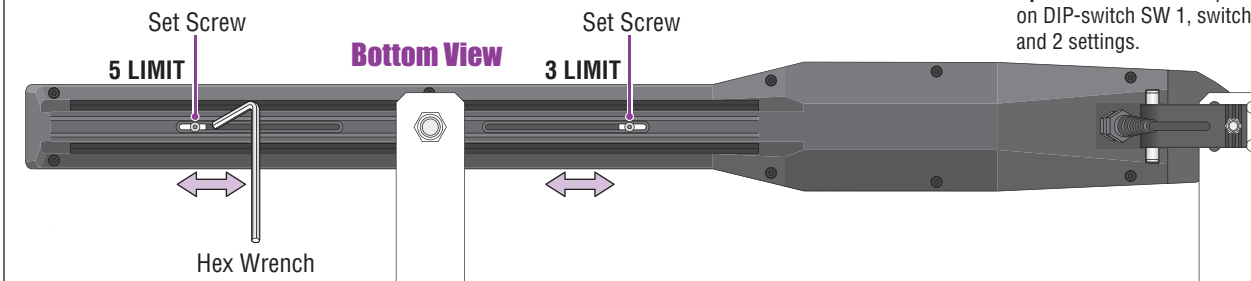
THIS PRODUCT IS TO BE INSTALLED AND SERVICED BY A TRAINED GATE SYSTEMS TECHNICIAN ONLY.
Visit www.dkslocator.com to find a professional installing and servicing dealer in your area.

The 6006 is intended for installation only on swing gates used for vehicles.
Pedestrians must be supplied with a separate access opening. For safety and installation instructions, please refer to **6006 Actuator Arm and Control Box Mounting manual, 115 VAC or Solar Control Box Wiring/Owner's manuals.**

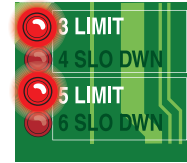
Limit Sensors Adjustment

Operator Opens to the Inside

Power to the circuit board must be ON when adjusting the limit sensors.



Limit LEDs



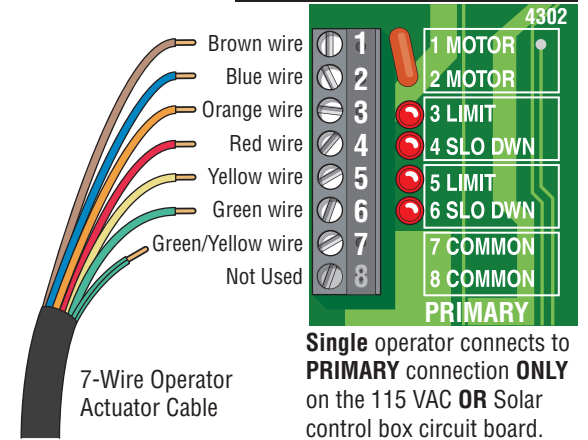
Note: 3 and 5 limit LEDs can be Open or Close limits depending on DIP-switch SW 1, switch 1 and 2 settings.

A Manually unlock handle and rotate 90° (see below).

B Manually move the gate to the desired open or closed position. Loosen set screw and slowly slide the limit assembly. **SLOW DOWN** LED will light first, continue sliding until the corresponding **LIMIT LED** on the circuit board lights up. Tighten screw. Manually move the gate to other position. Repeat process with the other limit assembly.

Wiring to Circuit Board

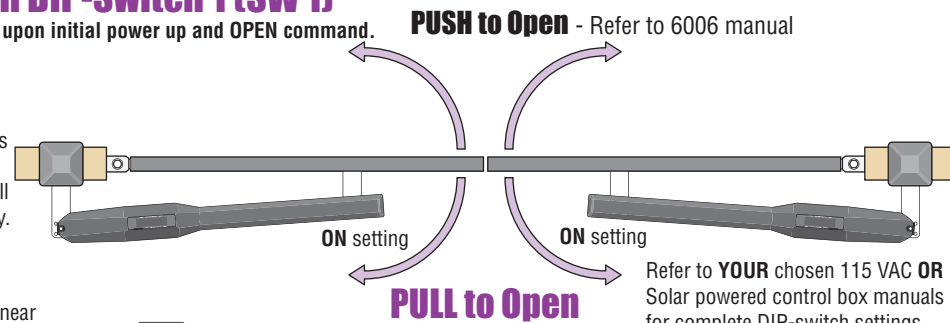
Note: If factory wired jumpers are on operator terminal, they **MUST** be removed.



Opening Direction DIP-Switch 1 (SW 1)

The operator **MUST OPEN GATE** upon initial power up and OPEN command.

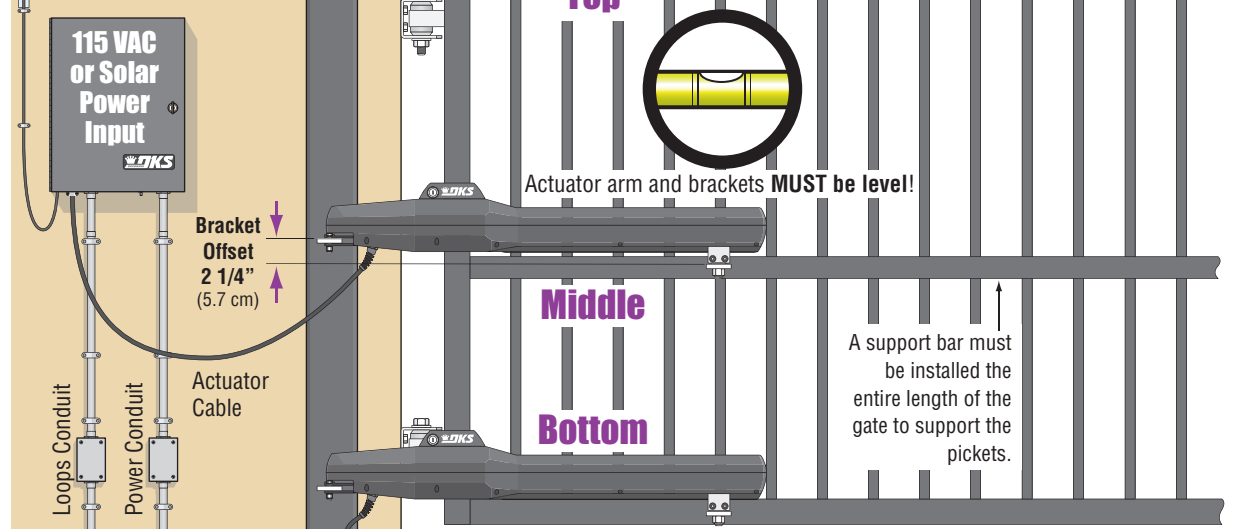
If the operator closes gate after giving open command, shut off power and reverse this switch setting otherwise operator will **NOT** function correctly.



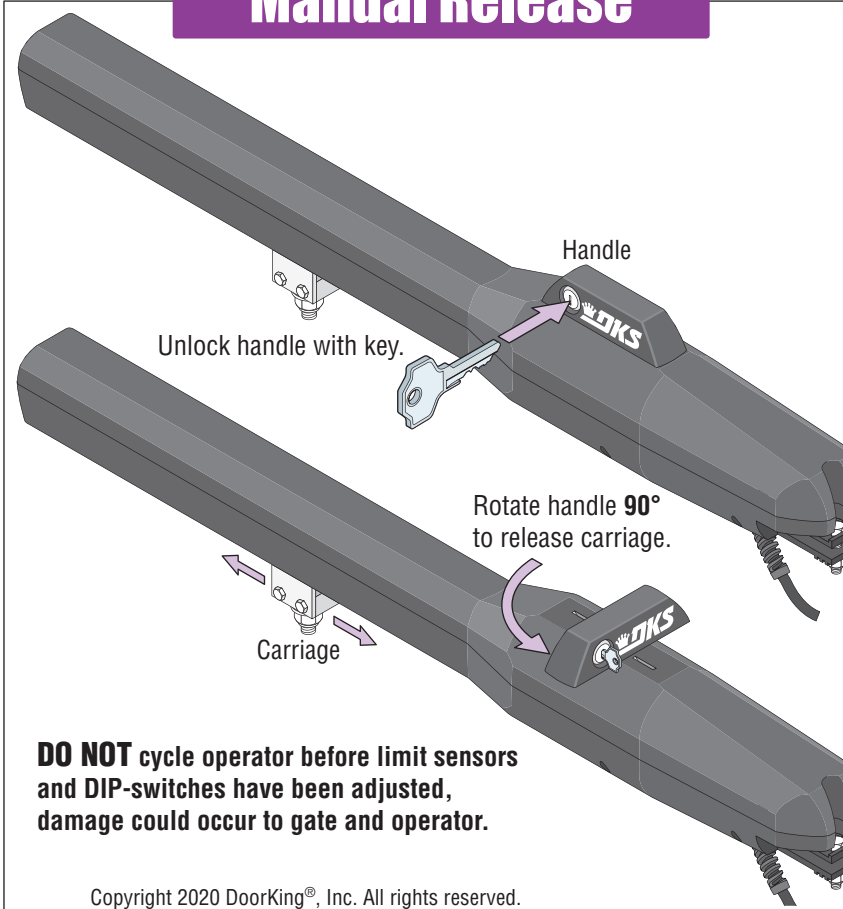
Control Box

Securely mount a control box near the actuator arm with appropriate hardware not supplied).

Coaxial Cable Antenna Kit
P/N 1514-073 (Sold separately)

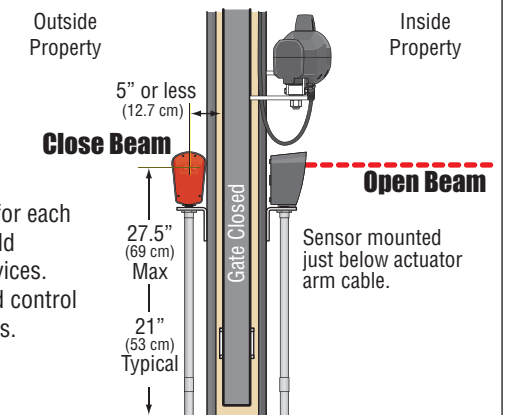


Manual Release

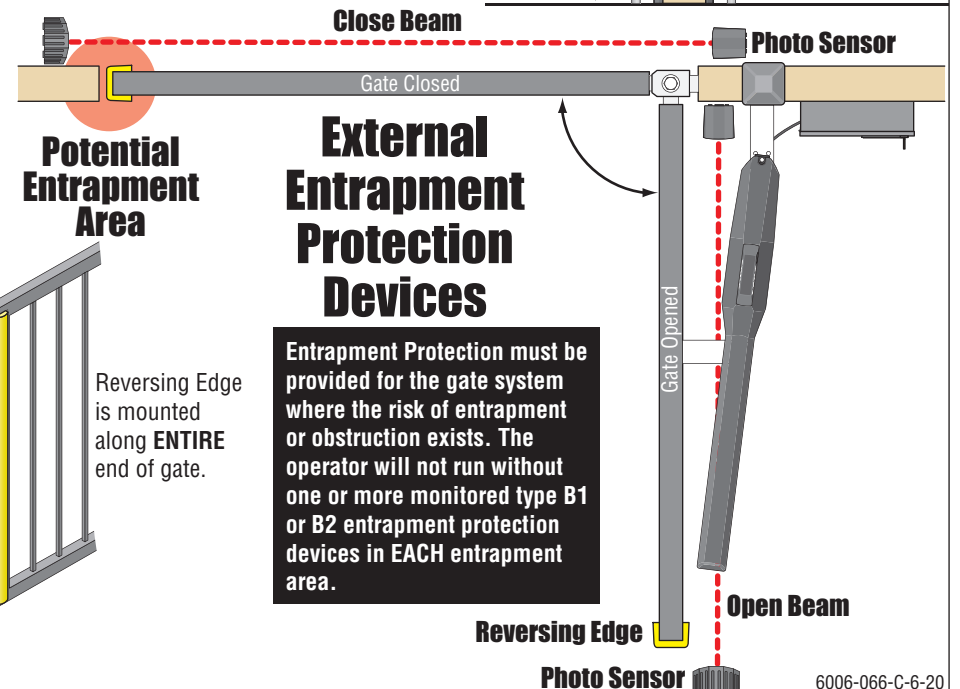


Copyright 2020 DoorKing®, Inc. All rights reserved.

Photo Sensors Height



Note: Only 1 monitored Device can be connected for each cycling direction. An **OPTIONAL** Expansion Kit (sold separately) will allow connection for additional devices. Refer to **YOUR** chosen 115 VAC **OR** Solar powered control box manuals to wire entrapment protection devices.



6006-066-C-6-20