

 **Tsongga**  
*South Africa*

**WINTER 2024**



## **TSONGA – BE BETTER EVERYDAY**

**We are not perfect, we are simply on a journey to become a better business everyday. What does that mean? Simple. If we can do one thing each and everyday to help us become a more environmentally minded and socially conscious business, imagine where we will be in the next 20 years.**

**At Tsonga we dream big. Our journey started over 20 years ago when our goal was to create a brand that believed there was more to business than profit. We wanted to produce everything in South Africa thus creating jobs at a time when our industry was being decimated by cheap imports from the East. It was founded on John F Kennedy's words: "A rising tide lifts all boats".**

**We were told it couldn't be done. We were told it was a waste of time and money.**

**Well... 22 years later, look at where we are. We have sold our product to the world's leading retailers: Nordstrom and Amazon to name a few. We distribute our product around the world and we have built up a near 20 store retail business that is growing everyday. We still deal with our original distributors in Australia who were our very first customers. They believed in us and we believe in them. This really just proves that in a world based on fleeting conversations and fast fashion, there is still room for relationships, loyalty and a product that is built to last. In fact, we believe more than ever, this is the future.**

**We have taken pause and reflected on our first two decades in business, and though we have made mistakes, lots of them, we still believe more than ever that what we set out to do is still as valid as ever.**

**Our leather bound story is born out of an ambition to create an international footwear and accessories brand with humble roots and a strong African heritage. Tsonga wholly embodies a collaboration of passionate people, their creativity and their talents to bring about a positive difference in society.**

**We have started to evaluate our supply chain and we only want to work with ethical suppliers who want to be part of this journey with us. It is a continual work in progress and something we will constantly strive to improve on.**

**As we started to discuss what we could do we realised that this journey to "Be Better" has no end: from stopping the use of single use plastics in our business, to looking for suppliers of recycled sole materials and turning our fabric marketing materials into handbag carriers.**

**We are far from perfect and still make mistakes everyday but our goal is simple: "Be Better Everyday".**



# THE HISTORY OF TSONGA

OUR LEGACY

---

**Our leather bound story is born out of an ambition to create an international footwear, handbag and accessories brand with humble roots and a strong African heritage. Tsonga wholly embodies a collaboration of passionate people, their creativity and their talents to bring about a positive difference in society.**

---

Tsonga is a brand that was developed for the export market in 1999 by Peter Maree. The local industry was under pressure and with two decades of experience in the art of shoe-making, Maree saw the opportunity to create high-quality African footwear that stood for something good. With Tsonga, we wanted to make a difference. At a time that saw most manufacturers leaving South Africa to produce off-shore, we decided to swim upstream by making use of our country's skills thereby creating long-term sustainable employment for our community.

Tsonga is inspired by Africa. Our footwear, handbags and accessories are reminders of this wonderful place that we get to call home.

Since launching in 1999, Tsonga has made its footprint as a fashion comfort brand in South Africa, Australia, New Zealand, Canada, France and the USA. We have concept stores in both southern and northern hemispheres.

## FREQUENTLY ASKED QUESTIONS

THE RIGHT KNOWLEDGE

### **Who is the owner of Tsonga?**

Tsonga is a family owned business. It was started in 1999 by Peter Maree and is still owned by the same family with his son Adrian now steering the ship.

### **What type of leather do we use?**

Tsonga uses several types of leather predominantly from cow, but also goat and sheep. We do not use any pig leather in our production process.

### **Where are the Tsonga shoes made?**

Tsonga shoes are made at our factory in Pietermaritzburg, KwaZulu-Natal.

# FREQUENTLY ASKED QUESTIONS

## THE RIGHT KNOWLEDGE

### Is it a local brand?

Yes, we are produced locally, however, we do sell both locally and internationally.

### Why have we called our brand Tsonga but we are not Tsonga people?

There is an old Tsonga folktale that tells the story of a man who handstitched leather in the art of making shoes and realised he could run faster. We called our brand Tsonga as a way of showcasing the great skill involved in the creation of the leather shoe making process.

### Why do we use an elephant as our emblem?

Elephants are synonymous with Africa. We use the elephant as our emblem as it accurately depicts our roots. When people see an elephant they automatically think of Africa. We are "Made in Africa. Adrored around the World".

### Is it a franchise?

No. Tsonga is not a franchise. All of our Tsonga stores are owned by the brand itself.

## WHERE ARE OUR STORES?

### TSONGA STORES

#### GAUTENG

Brooklyn	087 379 6929
Nicolway Bryanston	012 007 0524
Woodlands Boulevard	087 379 6923

#### WESTERN CAPE

Constantia	087 379 6927
Franschhoek	087 379 6926
Garden Route Mall, George	044 007 0275
Hermanus	028 312 4812
Stellenbosch	087 379 6924
Tyger Valley	021 007 5683
Waterstone Village	021 007 0760

#### MPUMALANGA

Dullstroom	013 007 0423
Hazyview	013 007 0424

#### KWAZULU-NATAL

Midlands Meander	087 379 6904
La Lucia Mall	087 379 6925
Factory Shop	033 007 0227
Tsonga Clearance Store	033 007 0057

#### FREESTATE

Preller Square, Bloemfontein	051 007 0049
Windmill Centre, Clarens	087 379 6928

# HOW OUR SHOES ARE MADE

## ABOUT US

Inspired by all things African, our trend-conscious designers put pencil to paper to create a conceptual design of a shoe. The hand-drawn design is then transferred to a carefully taped last, giving the designer a life-size model of how the shoe would be shaped. From the 3-D model, he cuts a pattern by hand from which a sample of the shoe will be made.

The sample, called a prototype, is then test-fitted to make sure it not only looks good on the foot, but that it is genuinely comfortable too. After a tweak here and there, and only once the designer is 100% happy that the shoe is worthy of a place in the collection, the hand-cut patterns then leave the design office and move to the pattern room. Here, they are transformed from paper to computer with every design detail and size considered.

The first stage of production, called 'clicking', is a department of highly skilled people who are responsible for cutting each piece of the upper (the top half) of our shoes. An expert on the characteristics of leather, the Clicker, ensures each hide is cut to maximum use whilst still retaining the highest quality by carefully examining the leather for any defects or scarring.

Colour marked to differentiate one size from the next, each piece of the upper is then laid out and aligned to a die (a template), so it can be marked to show how each piece must be sewn together. This is the beginning of its journey in the closing department. Depending on the style of the shoe, this includes the hands of as many as 30 different people, each one in synchronisation: stitching, gluing, trimming, stamping, punching and shaping all the individual pieces of leather into a single upper of a shoe.

Alongside the process of making the upper of the shoe, the bottom (sole) of the shoe has also begun its own journey. From liquid, the sole is moulded using a carefully mixed polyurethane compound, which is then later padded with a soft memory insole engineered to mould to the contours of your feet.

Working together with people from our surrounding rural communities, using a simple needle and wax coated thread, each pair of Tsonga shoes is stitched together by hand. In comparison to conventional shoemaking methods, our hand-stitched technique means that our shoes are softer, more flexible and lighter underfoot. Comfort that is unmistakably Tsonga.

The Tsonga handlacing women are dedicated and meticulous in their craft. Depending on the style, a pair of Tsonga sandals can take approximately 30 minutes to hand-stitch and a boot, 180 minutes in the skilful hands of its lacer.

When the shoe is essentially put together, it still needs to be given its shape, be quality checked, packed and dispatched. In the Tsonga factory, the shoe is softened using steam; a last inserted (a last is a shoemaker's model for shaping a shoe); and its beautiful shape is set as it travels through a heat-setter. It is also here where creases are smoothed and the leather buffed for its brilliant finish.

Before being packed and sent to retailers and boutiques around the world, all our shoes go through the last process of production, aptly called the 'finishing department'. Here, the soft leather sock is inserted, the gusset for added comfort is trimmed, and the shoe carefully checked to make sure it is exactly as it should be.

# POLYURETHANE & TR SOLES

## SOME INFORMATION ABOUT OUR SOLES

A lot of our soles are made using Polyurethane (PU) or Thermoplastic Rubbers (TPR or TR). We have included some insight into these materials to equip you with a better understanding of what they are, how to care for them and how to get the best use out of them.

### POLYURETHANE (PU)

PU soles are good quality and ideal for long wearability. It is long lasting and comfortable whilst being lightweight, abrasion and water resistant.

Shoes made with PU soles are flexible, comfortable and easy to wear. They offer non-slip properties with oxidation and bending performance. They also act as an excellent shock absorber.

Our PU soles can be cleaned using a scrubbing brush to clean off the dirt from the PU soles and some warm water to rinse it off. They cannot, however, be dried in front of any artificial heat source, nor in the sun. Allow them to dry off in a shaded and dry spot. You can rub your soles with linseed oil or fish oil from time to time to extend their durability.

PU soles benefit from being worn often in order to maintain their condition and help them last longer. Whilst PU is a highly durable material, if stored for prolonged periods of time without being worn they can be prone to a process call PU Hydrolysis which is a chemical process that can cause the PU to disintegrate, particularly in coastal areas like KwaZulu-Natal and Western Cape.

To combat PU Hydrolysis we encourage thoroughly cleaning the soles before putting them away and wear them often!

### THERMOPLASTIC RUBBERS (TR)

The Thermoplastic Rubber soles (TR) has similar properties to rubber and plastic. TR is a synthetic rubber that melts into liquid when heated and becomes solid when cooled. It has been made from Polymer SBS (styrene-butadiene-styrene).

Unlike natural rubber, TR can be recycled or remoulded as it does not have cross-linked bonds like natural rubbers - thus allowing it to recrystallise several times.

TR is used extensively in sole production being an easy and economic process that is excellent value for money, has great aesthetic versatility being easy to mould and lightweight and is fully recycleable. It has non-slip properties and is flexible.

## OUR SOLES

### **TLCN** Cacoon



The Cacoon unit has been made using a locally produced TR sole. This is a thermalplastic substrate that is lighter than rubber and offers fantastic support and flexibility. The unit includes an aircell lining and sock maximising breathability and comfort for your feet adding to longer wearability. The unit also has an imported woven rope detailing.

### **TLDB** Dumile



Our Dumile unit is a chunky sole that has been made using locally made PU (polyurethane). It features a unique pattern and includes EVA or white latex foam which gives the sole its memory foam properties. The lining of the sole has been imported from Italy and features a lush genuine sheep wool.

### **TLFC** Force



The Force unit has a slight heel and has been made using an imported rubber substrate that is of superior quality and comfort. Reinforcing the comfort is a locally made EVA footbed that has memory foam properties and the lining of the sole has been imported from Italy and features a lush genuine sheep wool.

### **TLHA** Herrera



The Herrera unit has been made using a locally produced TR sole. This is a thermalplastic substrate that is lighter than rubber and offers fantastic support and flexibility. The unit includes an aircell lining and sock maximising breathability and comfort for your feet adding to longer wearability. The unit also has an imported woven rope detailing.

### **TLOA** Omika



Our Omika espadrille has been produced using a locally made TR that is a lightweight substrate that is softer than rubber. It includes an imported woven rope detailing and locally made EVA, or white latex foam. Embedded on top of the sole is a microfibre aircell lining with gold foil branding which we do in house.

## OUR SOLES

### **TLOB** Obuka



Our Obuka espadrille has been produced using a locally made TR that is a lightweight substrate that is softer than rubber. It includes randing detail and locally made EVA, or white latex foam. Embedded on top of the sole is a microfibre aircell lining with gold foil branding which we do in house.

### **TLMX** Max



The Max unit has been made using an imported rubber substrate that is of superior quality and comfort. Reinforcing the comfort is a locally made EVA footbed that has memory foam properties and has been lined with a microfibre PU aircell lining for enhanced breathability.

### **TLNH** Noah



Our Noah unit is a sole that has been made using locally made PU (polyurethane). It's features include an EVA or white latex foam which gives the sole its memory foam properties and the unit includes an aircell lining and sock maximising breathability and comfort for your feet adding to longer wearability.

### **TLSF** Strike Fibre



Our Strike Fibre unit has been made using TR, a lightweight substrate that is softer than rubber. It includes a removable footbed for added comfort and a microfibre aircell lining for added breathability. Certain styles are lined with 100% sheep's wool lining.

### **TLSK** Strike



Our Strike unit has been made using TR, a lightweight substrate that is softer than rubber. It includes a removable footbed for added comfort and a microfibre aircell lining for added breathability. Certain styles are lined with 100% sheep's wool lining.



## OUR SOLES

### **TLUB** Ubani



Our Ubani sole has a slight heel and has been produced in house with PU. It incorporates a locally made EVA, or white latex foam, and features an imported genuine cow calf leather lining.

### **TLVW** Volksie



Our Volksie unit is a medium heeled TR sole that is produced in house. The TR sole is a lightweight substrate that is lighter than rubber. It includes a removable footbed for added comfort and a microfibre aircell lining for added breathability.

### **TLVY** Vuyani



Our Vuyani unit is a medium heeled TR sole that is produced in house. The TR sole is a lightweight substrate that is lighter than rubber. It includes a removable footbed for added comfort and a microfibre aircell lining for added breathability.

### **TLXB** Xobisa



Our Xobisa unit is a medium heeled TR sole that is produced in house. The TR sole is a lightweight substrate that is lighter than rubber. The sole also features an aircell lining and sock for improved breathability.

### **TLZG** Zag



Our Zag is a flat sole that is produced in house using PU. It incorporates EVA, or white latex foam, that has been locally made. Our sneaker styles feature an imported breathable microfibre aircell PU lining, and our boots feature an imported genuine wool lining from New Zealand.

## OUR SOLES

### **TLZP** Zoopa



Our Zoopa sole has a high heel and has been produced in house with PU. It incorporates a locally made EVA, or white latex foam, and features an aircell lining and sock for improved breathability.

### **TMAG** Angus



Our Angus is a locally produced TR sole which is a thermal plastic type substrate that is softer than rubber. It has a classic heel comprised of locally made EVA, or a white latex foam, as well as an imported genuine calf leather lining.

### **TMAS** Singa



Our Singa unit is a formal mens sole and has been made using locally produced PU (polyurethane). It incorporates EVA or white latex foam which gives the sole its memory foam properties. The Singa features an imported microfibre PU lining and sock that is breathable.

### **TMBL** Lib



Our Lib unit is a locally made chunky TR sole which is a thermal plastic type substrate that is softer than rubber. It is comprised of locally made EVA, or a white latex foam as well as an imported breathable microfibre aircell PU lining.

## OUR SOLES

### **TMEX** Exodus



Our Exodus is PU sole that we produce in house. It incorporates EVA, or white latex foam, that has been locally made with a supple suede sock.

### **TMKT** Kurt



Our Kurt is a locally produced TR sole which is a thermal plastic type substrate that is softer than rubber. It includes an EVA runner and is an unlined unit that features counter and face imported microfibre PU aircell, or Tsonga EVA, and an imported genuine calf cow leather sock.

### **TMNG** Ngalo



Our Ngalo unit has been made using TR, a lightweight substrate that is softer than rubber. It includes a removable footbed for added comfort and a microfibre aircell lining for added breathability. Certain styles are lined with 100% sheep's wool lining.

### **TMR2** B/Grip



Our B/Grip is a locally produced TR sole which is a thermal plastic type substrate that is softer than rubber. It includes an EVA runner and is an unlined unit that features counter and face imported microfibre PU aircell, or Tsonga EVA, and an imported genuine calf cow leather sock.

### **TMRA** Raptor



Our Raptor is a chunky PU sole that we produce in house. It incorporates EVA, or white latex foam, that has been locally made with an imported microfibre PU aircell sock and lining.

## OUR SOLES

### **TMSR** Sahara



Our Sahara unit is part of our new modern collection. The new construction is incredibly flexible and has been created using only the best components. The insoles are moulded to cup your feet and therefore offers greater comfort. The insole is light and airy and made from a very soft PU which means it has complete bounce back memory and will never collapse therefore offering you endless comfort. Our non slip thermoplastic rubber (TR) outsole provides grip in those slippery situations and will ensure these sandals deliver ultimate support and comfort.

### **TMSX** Driver



Our Driver unit is a locally produced TR sole which is a thermal plastic type substrate that is softer than rubber. It includes EVA, or a white latex foam, as well as an imported genuine calf cow leather half sock.

### **TMUY** Ully



Our Ully unit has been made using TR, a lightweight substrate that is softer than rubber. It includes a removable footbed for added comfort and a microfibre aircell lining for added breathability.

### **TMVS** VS



Our VS unit is a PU sole that we produce in house. It includes EVA, or a white latex foam, and features a two piece sock of genuine cow calf leather and suede.

### **YMUL** Umhlanga



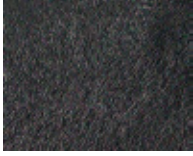
Our Umhlanga unit is a PU sole that we produce in house. It includes EVA, or a white latex foam, and an imported breathable microfibre PU aircell lining.

# OUR LEATHERS

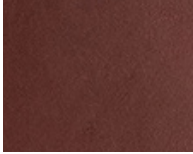
ALL OF OUR SHOES, BAGS & ACCESSORIES ARE  
MADE USING 100% GENUINE LEATHER

## Relaxa Leather Soft cow calf leather

Black Relaxa



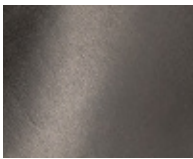
Raisin Relaxa



Hazel Relaxa



Choc Relaxa



## Metallic Leather Soft goat leather

Gold Metallic



Glitter Metallic

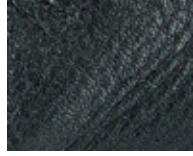


Tallio Metallic

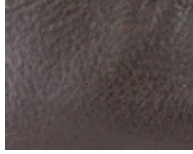


## Delta Cow leather

Black Delta

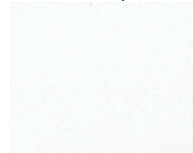


Choc Delta

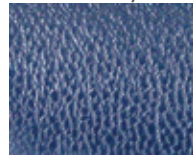


## Cayak Soft goat leather

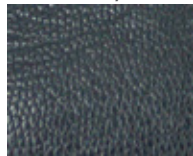
White Cayak



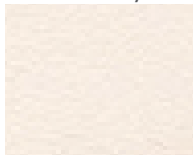
Denim Cayak



Black Cayak



Cream Cayak



Suede Cayak

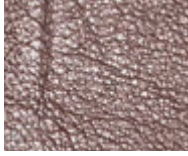


Timber Cayak

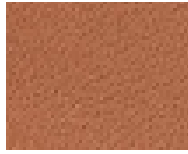


## Cayak continued Soft goat leather

Cafe Cayak



Oak Cayak



## Domus Soft metallic goat leather

Bark Domus



## Animal Print Cow hide with animal print

Cheetah Animal Print



## Castrol Distressed-look cow leather

Tan Castrol



## Lisoto Soft animal print goat leather

Leopard Lisoto



## Velutto Soft cow suede leather

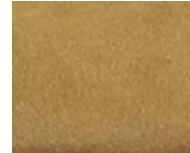
Navy Bristol Velutto



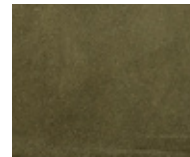
London Velutto



Madrid Velutto



Olive Velutto



# OUR LEATHERS

ALL OF OUR SHOES, BAGS & ACCESSORIES ARE  
MADE USING 100% GENUINE LEATHER

## Brillo Metallic & textured goat leather

Stone Brillo



## Rockafella Soft goat leather with animal print

Opal Rockafella



Noisette Rockafella



Nero Rockafella



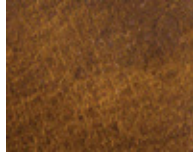
## Cyclone Oily cow leather

Light Brown Cyclone



## Carvano Distressed-look cow leather

Brown Carvano



Royal Carvano



## Madrid Suede Cow suede leather

Donkey Madrid Suede



## Dallas Nubuck cow leather

Navy Dallas



Red Dallas



Olive Dallas



## Nubuck Nubuck buffalo leather

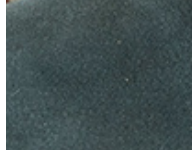
Choc Nubuck



Navy Nubuck



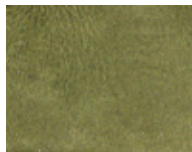
Marine Nubuck



Tan Nubuck



Olive Nubuck



## Bioveg Sol Plant based leather

White Bioveg Sol

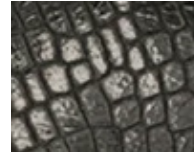


## Coco Lux Goat leather with animal print

Walnut Coco Lux



Black Coco Lux



White Coco Lux



## Madrid Goat leather with metallic shimmer

Donkey Madrid



# OUR LEATHERS

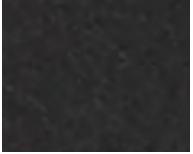
ALL OF OUR SHOES, BAGS & ACCESSORIES ARE  
MADE USING 100% GENUINE LEATHER

## Natan Soft cow leather

Marine Natan



Black Natan



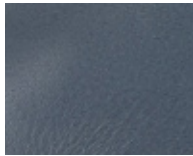
Oak Natan



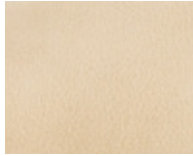
Choc Natan



Denim Natan



Stone Natan



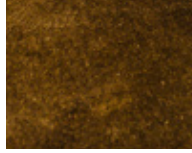
## Grid Soft metallic goat leather

Tallio Grid



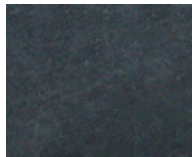
## Suede Cow suede leather

Taupe Suede



## Buffburn Nubuck buffalo leather

Marine Buffburn

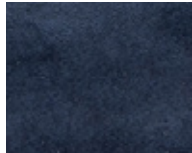


Olive Buffburn



## Velour Soft goat suede

Navy Velour

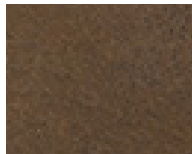


## Rodeo Oily-waxed buffalo leather

Choc Rodeo

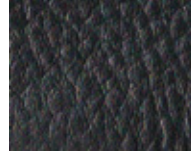


Brown Rodeo

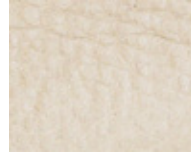


## Vintage Soft milled cow leather

Black Vintage



Gravel Vintage



Tobacco Vintage



## Spirit Metallic goat leather

Beige Spirit





var 003 navy velour  
suede leather with 100% wool lining

- Genuine suede leather upper
- 100% wool lining and sock
- Locally made lightweight & flexible PU insole with bounceback memory moulded to cup the foot.
- EVA footbed with memory foam properties

var 001 suede velour  
suede leather with 100% wool lining



## SLIDERS TLCO006

abidjan  
size 3 to 9



var 001 black vintage & cheetah print  
Soft milled cow leather  
& cow hide with animal print

- Genuine leather upper with Cheetah print on cow hide
- Detail hand lacing
- Imported woven rope detailing
- Locally made non-slip, lightweight and flexible sole called TR
- EVA footbed with memory foam properties
- Microfibre aircell lining and sock for enhanced breathability



var 002 tobacco vintage & cheetah print  
Soft milled cow leather  
& cow hide with animal print

## MULES TLOA025

halamuza  
size 3 to 9



var 002 black cayak  
Soft goat leather



var 001 cream cayak  
Soft goat leather

var 003 oak cayak  
Soft goat leather



- Genuine leather upper and detail hand lacing
- Imported woven rope detailing
- Locally made non-slip lightweight and flexible sole called TR
- EVA footbed with memory foam properties
- Microfibre aircell lining and sock for enhanced breathability

## SHOES TLOA041

kwamoka  
size 3 to 9





var 024 oak cayak & leopard lisoto  
Soft goat leather & goat leather with animal print

## TLOA026

consisela  
size 3 to 9



var 015 denim cayak & navy velour  
Soft goat leather & soft goat suede leather



var 022 black cayak & coco lux  
Soft goat leather & goat leather with animal print

- Genuine leather upper and detail hand lacing
- Imported woven rope detailing
- Locally made non-slip lightweight and flexible sole called TR
- EVA footbed with memory foam properties
- Microfibre aircell lining and sock for enhanced breathability

## TLOA005

indzima  
size 3 to 9



var 063 oak cayak  
Soft goat leather



var 054 leopard lisoto  
Goat leather with animal print



var 062 stone natan  
Soft cow leather

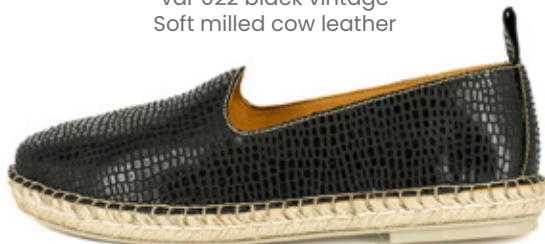
- Genuine leather upper and detail hand lacing
- Imported woven rope detailing
- Locally made non-slip lightweight and flexible sole called TR
- EVA footbed with memory foam properties
- Microfibre aircell lining and sock for enhanced breathability



var 022 black vintage  
Soft milled cow leather



var 059 glitter metallic  
Soft goat leather



var 052 black coco lux  
Goat leather with animal print



var 058 denim natan  
Soft cow leather

## TLOA045

kataleya  
size 3 to 9



var 001 black natan  
Soft cow leather

- Genuine leather upper and detail hand lacing
- Imported woven rope detailing
- Locally made non-slip lightweight and flexible sole called TR
- EVA footbed with memory foam properties
- Microfibre aircell lining and sock for enhanced breathability



var 004 gravel vintage  
Soft milled cow leather



var 002 navy velour  
Soft goat suede leather

- Genuine leather upper and detail hand lacing
- Imported woven rope detailing
- Locally made non-slip lightweight and flexible sole called TR
- EVA footbed with memory foam properties
- Microfibre aircell lining and sock for enhanced breathability



var 001 timber cayak  
Soft goat leather

## TLHA001

dodoma  
size 3 to 9



var 001 black natan  
Soft cow leather

- Genuine leather upper and detail hand lacing
- Imported woven rope detailing
- Locally made non-slip lightweight and flexible sole called TR
- EVA footbed with memory foam properties
- Microfibre aircell lining and sock for enhanced breathability



var 002 oak natan  
Soft cow leather

## TLHA002

banjul  
size 3 to 9



var 002 denim cayak & navy velour  
Soft goat leather & soft goat suede leather

- Genuine leather upper and detail hand lacing
- Imported woven rope detailing
- Locally made non-slip lightweight and flexible sole called TR
- EVA footbed with memory foam properties
- Microfibre aircell lining and sock for enhanced breathability



var 001 cream cayak & oak cayak  
Soft goat leather

## TLHA003

cotonou  
size 3 to 9



var 002 black natan  
Soft cow leather

- Genuine leather upper and detail hand lacing
- Imported woven rope detailing
- Locally made non-slip lightweight and flexible sole called TR
- EVA footbed with memory foam properties
- Microfibre aircell lining and sock for enhanced breathability



var 001 gold mettalic  
Metallic goat leather

## TLHA004

gisenyi  
size 3 to 9



var 002 black cayak  
Soft goat leather

- Genuine leather upper
- Detail hand lacing
- Easy slip on style
- Locally made non-slip, lightweight and flexible sole called TR
- EVA footbed with memory foam properties
- Microfibre aircell lining and sock for enhanced breathability



var 003 timber cayak  
Soft goat leather

## TLOB001

solwezi  
size 3 to 9



## SNEAKERS TLZG007

kaniso  
size 3 to 9

- Genuine leather upper
- Lace-up sneaker with padded collar
- Detail stitching
- Locally made lightweight and flexible PU sole with bounceback memory
- EVA footbed with memory foam properties
- Microfibre aircell lining and sock for enhanced breathability



var 031 white cayak  
Soft goat leather

## TLSK013

isahluko  
size 4 to 8

- Genuine leather upper with detail stitching
- Laced-up sneaker with padded collar
- Locally made non-slip lightweight and flexible sole called TR
- EVA footbed with memory foam properties
- Birdseye lining and footbed for enhanced breathability



var 006 white cayak & white coco lux  
Soft goat leather & goat leather  
with animal print

## TLSK014

incindezi  
size 4 to 8

- Genuine leather upper with detail stitching
- Laced-up sneaker with padded collar
- Locally made non-slip lightweight and flexible sole called TR
- EVA footbed with memory foam properties
- Birdseye lining and footbed for enhanced breathability



var 001 white cayak & tallio grid  
Soft goat leather &  
metallic goat leather



var 001 white cayak & nero grid  
Soft goat leather & metallic goat leather

- Genuine leather upper with detail stitching
- Laced-up sneaker with padded collar
- Locally made non-slip lightweight and flexible sole called TR
- EVA footbed with memory foam properties
- Birdseye lining and footbed for enhanced breathability



var 002 timber cayak & beige spirit  
Soft goat leather & metallic goat leather

## TL SK020

jelani  
size 4 to 8

## TLOA006

yebo  
size 3 to 9



var 001 white cayak  
Soft goat leather



var 030 leopard lisoto  
Goat leather with animal print



var 028 timber cayak  
Soft goat leather

- Genuine leather upper
- Lace-up sneaker with padded collar
- Detail hand lacing and stitching
- Imported woven rope detailing
- Locally made non-slip lightweight and flexible sole called TR
- EVA footbed with memory foam properties
- Microfibre aircell lining and sock for enhanced breathability



var 036 cream cayak  
Soft goat leather



var 006 oak cayak & walnut coco lux  
Soft goat leather and soft goat leather with animal print

- Genuine leather upper
- Lace-up sneaker with padded collar
- Detail hand lacing and stitching
- Imported woven rope detailing
- Locally made non-slip lightweight and flexible sole called TR
- EVA footbed with memory foam properties
- Microfibre aircell lining and sock for enhanced breathability



var 005 white cayak & tallio metallic  
Soft goat leather & metallic goat leather

## TLOA044

amara  
size 3 to 9

## TLMX001

conakry  
size 3 to 9



var 002 white cayak & bark domus  
Soft goat leather & metallic goat leather

- Genuine leather upper with detail stitching
- Laced-up sneaker with padded collar
- Locally made non-slip lightweight and flexible sole called TR
- EVA footbed with memory foam properties
- Birdseye lining and footbed for enhanced breathability



var 001 white cayak  
Soft goat leather

## TLMX003

tripoli  
size 3 to 9



var 002 white cayak & cream cayak  
Soft goat leather



var 003 cream cayak & leopard lisoto  
Soft goat leather & goat leather with animal print

- Genuine leather upper with detail stitching
- Laced-up sneaker with padded collar
- Locally made non-slip lightweight and flexible sole called TR
- EVA footbed with memory foam properties
- Birdseye lining and footbed for enhanced breathability



var 001 timber cayak & beige spirit  
Soft goat leather & metallic goat leather

# WEDGE SNEAKERS TLVW001

accra  
size 3 to 9

- Genuine leather upper in new sneaker style
- Slightly heeled in lace-up style
- Detail hand lacing and stitching
- Imported woven rope detailing
- Locally made non-slip lightweight and flexible sole called TR
- EVA footbed with memory foam properties
- Microfibre aircell lining and sock for enhanced breathability



var 001 white cayak  
Soft goat leather

# TLVY001

vuyani  
size 4 to 8



var 004 timber cayak  
Soft goat leather



var 001 white cayak  
Soft goat leather

- Genuine leather upper in new sneaker style
- Slightly heeled in lace-up style
- Detail hand lacing and stitching
- Imported woven rope detailing
- Locally made non-slip lightweight and flexible sole called TR
- EVA footbed with memory foam properties
- Microfibre aircell lining and sock for enhanced breathability



# WEDGE HIGH HEELS TLCN003

inkantolo  
size 3 to 9

- Genuine leather upper
- Slightly heeled with adjustable buckle and strap
- Detail hand lacing and stitching
- Imported woven rope detailing
- Locally made non-slip lightweight and flexible sole called TR
- EVA footbed with memory foam properties
- Microfibre aircell lining and sock for enhanced breathability



var 006 gravel vintage  
Soft milled cow leather



var 029 raisin relaxa  
Soft cow calf leather



var 009 black cayak  
Soft goat leather



var 023 walnut coco lux  
Soft goat leather with animal print



var 030 bilbao velutto olive  
Soft cow suede



var 010 denim cayak  
Soft goat leather

## TLCN013

pulika  
size 3 to 9



var 002 black cayak  
Soft goat leather

- Genuine leather upper
- Peep-toe vamp with detail hand lacing
- Slightly heeled
- Locally made non-slip lightweight and flexible sole called TR
- EVA footbed with memory foam properties
- Microfibre aircell lining and sock for enhanced breathability



var 009 oak cayak  
Soft goat leather

## TLCN014

mirembe  
size 3 to 9



var 003 oak cayak & walnut coco lux  
Soft goat leather & goat leather with animal print



var 001 cream cayak & stone brillo  
Soft goat leather & goat leather with animal print



var 002 black cayak & black coco lux  
Soft goat leather & goat leather with animal print

- Genuine leather upper with cross over vamp
- Slightly heeled with adjustable buckle and strap
- Detail hand lacing and stitching with imported woven rope detailing
- Locally made non-slip lightweight and flexible sole called TR
- EVA footbed with memory foam properties
- Microfibre aircell lining and sock for enhanced breathability



var 007 timber cayak & beige spirit  
Soft goat leather & metallic goat leather



## ANKLE BOOTS TLXB023

norakei  
size 3 to 8



var 001 black relaxa  
Soft cow calf leather



var 008 hazel relaxa  
Soft cow calf leather

- Genuine leather upper
- Outer side zip
- Slightly heeled
- Locally made non-slip lightweight and flexible sole called TR
- EVA footbed with memory foam properties
- Microfibre aircell lining and sock for enhanced breathability

## TLXB024

chikelu  
size 3 to 8

- Genuine leather upper
- Laced
- Detail stitching
- Slightly heeled
- Locally made lightweight and flexible PU sole with bounceback memory
- EVA footbed with memory foam properties
- Microfibre aircell lining and sock for enhanced breathability



var 003 black relaxa  
Soft cow calf leather



var 001 choc relaxa  
Soft cow calf leather



var 002 oak cayak  
Soft goat leather

- Genuine leather upper
- Outer side zip
- Adjustable aesthetic buckle detailing
- Slightly heeled
- Locally made non-slip lightweight and flexible sole called TR
- EVA footbed with memory foam properties
- Microfibre aircell lining and sock for enhanced breathability

## TLNH001

zinder  
size 3 to 8



var 001 black natan  
Soft cow leather

## TLFC002

moroni  
size 3 to 9



var 001 black delta  
Cow leather

- Genuine leather upper
- Inner side zip
- Slightly heeled
- Locally made non-slip lightweight and flexible sole called TR
- EVA footbed with memory foam properties
- Microfibre aircell lining and sock for enhanced breathability

## TLZP054

zavala  
size 3 to 8



var 001 black relaxa  
Soft cow calf leather

- Genuine leather upper
- Inner side zip
- Outer side zip for entry
- High heel
- Lightweight, flexible PU sole.
- Locally made EVA, or white latex foam
- Microfibre aircell lining and sock for enhanced breathability

## WOOL-LINED BOOTS TLDB015

maluju  
size 3 to 9



var 022 raisin relaxa  
Soft cow calf leather

- Genuine leather upper
- Buckle
- Detail hand lacing
- Imported genuine wool sock and lining
- Locally made chunky, lightweight and flexible PU sole with bounceback memory
- EVA footbed with memory foam properties



var 021 black natan  
Soft cow leather

## TLDB873

mbazo  
size 3 to 9



var 048 choc natan  
Soft cow leather

- Genuine leather upper
- Shoe lace detail
- Detail hand lacing
- Imported genuine wool sock and lining
- Locally made chunky, lightweight and flexible PU sole with bounceback memory
- EVA footbed with memory foam properties

## TLHA005

kigali  
size 3 to 9



var 001 café cayak  
Soft goat leather

- Genuine leather upper
- Detail hand lacing
- Imported genuine wool sock and lining
- Locally made chunky, lightweight and flexible PU sole with bounceback memory
- EVA footbed with memory foam properties



var 002 black delta  
Cow leather

## TLSF004

iholide  
size 4 to 8



var 009 denim natan  
Soft cow leather

- Genuine leather upper
- Slightly heeled
- Imported genuine wool sock and lining
- Locally made lightweight and flexible PU sole with bounceback memory
- EVA footbed with memory foam properties
- Microfibre aircell lining and sock for enhanced breathability



var 008 oak natan  
Soft cow leather



var 002 suede cayak  
Soft goat leather

- Genuine leather upper
- Detail hand lacing
- Imported genuine wool sock and lining
- Locally made chunky, lightweight and flexible PU sole with bounceback memory
- EVA footbed with memory foam properties

## TLHA007

praia  
size 3 to 9



var 001 black natan  
Soft cow leather

## TLMX002

monrovia  
size 3 to 9



var 002 timber cayak  
Soft goat leather

- Genuine leather upper
- Detail hand lacing
- Imported genuine wool sock and lining
- Locally made non-slip lightweight and flexible sole called TR
- EVA footbed with memory foam properties

## TLFC003

gabarone  
size 3 to 9



var 001 suede cayak  
Soft goat leather

- Genuine leather upper
- Buckle
- Detail hand lacing
- Imported genuine wool sock and lining
- Locally made non-slip lightweight and flexible sole called TR
- EVA footbed with memory foam properties





## LONG BOOTS TLFC001

tozeur  
size 3 to 9



var 002 choc relaxa  
Soft cow calf leather

- Genuine leather upper
- Inner side zip
- Slightly heeled
- Locally made non-slip lightweight and flexible sole called TR
- EVA footbed with memory foam properties
- Microfibre aircell lining and sock for enhanced breathability



var 001 black relaxa  
Soft cow calf leather

## TLUB032

vutha  
size 3 to 9

var 047 hazel relaxa  
Soft cow calf leather



- Genuine leather upper
- Inner side zip
- Slightly heeled
- Locally made lightweight and flexible PU sole with bounceback memory
- EVA footbed with memory foam properties
- Microfibre aircell lining and sock for enhanced breathability



var 002 black relaxa  
Soft cow calf leather

## TLXB018

ikwata  
size 3 to 8



var 002 black relaxa  
Soft cow calf leather

- Genuine leather upper
- Inner side zip
- Outer side aesthetic zip
- Slightly heeled
- Locally made non-slip lightweight and flexible sole called TR
- EVA footbed with memory foam properties
- Microfibre aircell lining and sock for enhanced breathability

## TLZP052

inkumbula  
size 3 to 8



var 002 black relaxa  
Soft cow calf leather

- Genuine leather upper
- Inner side zip
- Decorative wrap-around buckle
- High heel
- Lightweight, flexible PU sole.
- Locally made EVA, or white latex foam
- Microfibre aircell lining and sock for enhanced breathability



# BOAT SHOES

## TMR2013

thami  
size 6 to 12

- Genuine leather upper
- Detail hand lacing
- Leather laces and eyelits
- Imported non-slip lightweight and flexible sole called TR
- EVA footbed with memory foam properties
- Microfibre aircell lining and cow leather half sock for enhanced breathability



var 003 brown carvano  
Distressed-look cow leather

## TMR2014

exwaya  
size 6 to 12

- Genuine leather upper
- Detail hand lacing
- Leather laces and eyelits
- Imported non-slip lightweight and flexible sole called TR
- EVA footbed with memory foam properties
- Microfibre aircell lining and cow leather half sock for enhanced breathability



var 001 navy nubuck  
Nubuck buffalo leather



var 002 tan nubuck  
Nubuck buffalo leather



var 004 olive nubuck  
Nubuck buffalo leather



var 003 choc nubuck  
Nubuck buffalo leather



var 005 navy nubuck & brown carvano  
Nubuck buffalo & distressed-look cow leather

## TMNG009

umnyakazo

size 6 to 11

- Genuine leather upper
- Detail stitching
- Padded collar
- Imported non-slip lightweight and flexible sole called TR
- EVA footbed with memory foam properties
- Microfibre aircell lining and sock for enhanced breathability



var 003 olive dallas  
Nubuck cow leather



var 001 navy dallas  
Nubuck cow leather



var 002 red dallas  
Nubuck cow leather

## TMKT013

bamako

size 6 to 11

- Genuine leather upper
- Detail stitching
- Padded collar
- Imported non-slip lightweight and flexible sole called TR
- EVA footbed with memory foam properties
- Microfibre aircell lining and sock for enhanced breathability



var 002 choc rodeo  
Cow leather

## TMKT015

malabo

size 6 to 11

- Genuine leather upper
- Detail stitching
- Padded collar
- Imported non-slip lightweight and flexible sole called TR
- EVA footbed with memory foam properties
- Microfibre aircell lining and sock for enhanced breathability



var 001 marine natan  
Soft cow leather

- Genuine leather upper
- Detail hand lacing
- Imported non-slip lightweight and flexible sole called TR
- EVA footbed with memory foam properties
- Microfibre aircell lining and cow leather half sock for enhanced breathability

## MOCCASINS TMSX005

banakho  
size 6 to 11



var 003 black delta  
Soft cow leather



var 002 choc delta  
Soft cow leather



var 013 tan nubuck  
Nubuck buffalo leather



var 022 marine buff burn  
Nubuck buffalo leather



var 023 choc nubuck  
Nubuck buffalo leather

## TMSX270

phazima  
size 6 to 11

- Genuine leather upper
- Detail hand lacing
- Imported non-slip lightweight and flexible sole called TR
- EVA footbed with memory foam properties
- Microfibre aircell lining and calf cow leather sock for enhanced breathability



var 024 olive nubuck  
Nubuck buffalo leather

- Genuine leather upper
- Detail hand lacing
- Imported non-slip lightweight and flexible sole called TR
- EVA footbed with memory foam properties
- Microfibre aircell lining and cow leather half sock for enhanced breathability

## TMSX371

insonga  
size 6 to 11



var 033 olive nubuck  
Nubuck buffalo leather



var 028 marine nubuck  
Nubuck buffalo leather



var 002 light brown cyclone  
Buffalo leather



## TMNG004

othile  
size 6 to 11

var 001 marine nubuck  
Nubuck buffalo leather

- Genuine leather upper
- Detail hand lacing
- Imported non-slip lightweight and flexible sole called TR
- EVA footbed with memory foam properties
- Microfibre aircell lining and cow leather half sock for enhanced breathability



var 001 red nubuck  
Nubuck buffalo leather

## TMNG008

ukusala  
size 6 to 11



var 002 olive nubuck  
Nubuck buffalo leather

- Genuine leather upper
- Detail hand lacing
- Imported non-slip lightweight and flexible sole called TR
- EVA footbed with memory foam properties
- Microfibre aircell lining and cow leather half sock for enhanced breathability



## TMKT014

kinshasa

size 6 to 11



var 003 madrid velutto  
Nubuck buffalo leather

- Genuine leather upper
- Detail stitching
- Padded collar
- Imported non-slip lightweight and flexible sole called TR
- EVA footbed with memory foam properties
- Microfibre aircell lining and sock for enhanced breathability



var 001 bilboa olive  
Nubuck buffalo leather



var 004 bristol velutto  
Nubuck buffalo leather



var 002 london velutto  
Nubuck buffalo leather

## TMSR008

cairo

size 6 to 11



var 001 marine nubuck  
Nubuck buffalo leather



var 002 choc delta  
Soft cow leather

- Genuine leather upper
- Detail hand lacing
- Imported non-slip lightweight and flexible sole called TR
- EVA footbed with memory foam properties
- Microfibre aircell lining and calf cow leather sock for enhanced breathability

## SNEAKERS TMUY001

isifiso  
size 6 to 11



var 001 white cayak  
Soft goat leather

- Genuine leather upper
- Detail stitching
- Padded collar
- Imported non-slip lightweight and flexible sole called TR
- EVA footbed with memory foam properties
- Microfibre aircell lining and sock for enhanced breathability



var 002 black cayak  
Soft goat leather

## TMNG006

bukekayo  
size 6 to 11



var 002 tan castrol  
Distressed-look cow leather

- Genuine leather upper
- Detail stitching
- Padded collar
- Imported non-slip lightweight and flexible sole called TR
- EVA footbed with memory foam properties
- Microfibre aircell lining and sock for enhanced breathability



var 001 marine nubuck & light brown cyclone  
Nubuck buffalo & buffalo leather

## TMNG010

inkungu  
size 6 to 11



var 001 hazel relaxa  
Soft cow calf leather

- Genuine leather upper
- Detail stitching
- Padded collar
- Imported non-slip lightweight and flexible sole called TR
- EVA footbed with memory foam properties
- Muskia Bioveg Sol lining

## TMNG011

mahari  
size 6 to 11

var 001 white bioveg sol  
Plant-based leather alternative

- Genuine leather upper
- Detail stitching
- Padded collar
- Imported non-slip lightweight and flexible sole called TR
- EVA footbed with memory foam properties
- Muskia Bioveg Sol lining



var 001 brown rodeo  
cow suede leather

- Genuine leather upper
- Detail stitching
- Padded collar
- Imported non-slip lightweight and flexible sole called TR
- EVA footbed with memory foam properties
- Microfibre aircell lining and sock for enhanced breathability



var 004 choc delta  
Soft cow leather

## TMKT012

nairobi  
size 6 to 11

## BOOTS TMAG001

teboho  
size 6 to 11

- Genuine leather upper
- Laced
- Imported non-slip lightweight and flexible sole called TR
- EVA footbed with memory foam properties
- Microfibre aircell lining and sock for enhanced breathability



var 001 choc rodeo  
Oily-waxed buffalo leather

## TMBL005

zibonele  
size 6 to 12

- Genuine leather upper
- Laced
- Padded collar
- Detail stitching
- Imported non-slip lightweight and flexible sole called TR
- EVA footbed with memory foam properties
- Microfibre aircell lining and sock for enhanced breathability



var 001 brown carvano  
Distressed-look cow leather

## TMAS004

ncenga  
size 6 to 12

var 018 taupe suede  
Cow suede leather

- Genuine leather upper
- Laced
- Detail hand lacing
- Locally made lightweight and flexible PU sole with bounceback memory
- EVA footbed with memory foam properties
- Microfibre aircell lining and sock for enhanced breathability



## TMNG007

iqhawe  
size 6 to 11



var 003 light brown cyclone  
Oily cow leather

- Genuine leather upper
- Laced
- Padded collar
- Detail stitching
- Imported non-slip lightweight and flexible sole called TR
- EVA footbed with memory foam properties
- Microfibre aircell lining and sock for enhanced breathability



var 001 donkey madrid  
Cow suede leather

## TMEX004

seyili  
size 6 to 12



var 002 choc natal  
Soft milled cow leather

- Genuine leather upper
- Adjustable velcro strap for ease of use
- Detail hand lacing
- Detail stitching
- Locally made lightweight and flexible PU sole with bounceback memory
- EVA footbed with memory foam properties
- Microfibre aircell lining and sock for enhanced breathability

## SANDALS

## TMEX002

muncu  
size 6 to 12



var 001 choc delta  
Cow leather

- Genuine leather upper
- Adjustable velcro strap for ease of use
- Detail hand lacing
- Detail stitching
- Locally made lightweight and flexible PU sole with bounceback memory
- EVA footbed with memory foam properties
- Microfibre aircell lining and cow suede sock for enhanced breathability

## TMRA003

toliara  
size 6 to 11



var 002 choc delta  
cow leather

- Genuine leather upper
- Adjustable velcro strap for ease of use
- Detail hand lacing
- Detail stitching
- Locally made lightweight and flexible PU sole with bounceback memory
- EVA footbed with memory foam properties
- Microfibre aircell lining and sock for enhanced breathability

## TMEX536

sisika  
size 6 to 12



var 001 choc delta  
Cow leather

- Genuine leather upper
- Adjustable velcro strap for ease of use
- Detail hand lacing
- Detail stitching
- Locally made lightweight and flexible PU sole with bounceback memory
- EVA footbed with memory foam properties
- Microfibre aircell lining and cow suede sock for enhanced breathability

## TMVS002

juza  
size 6 to 12



var 004 choc delta  
Cow leather

- Genuine leather upper
- Detail hand lacing
- Detail stitching
- Locally made lightweight and flexible PU sole with bounceback memory
- EVA footbed with memory foam properties
- Microfibre aircell lining and calf leather sock for enhanced breathability

## TMVS011

dukuza  
size 6 to 12



var 002 choc delta  
Cow leather

- Genuine leather upper
- Adjustable velcro strap for ease of use
- Detail hand lacing
- Detail stitching
- Locally made lightweight and flexible PU sole with bounceback memory
- EVA footbed with memory foam properties
- Microfibre aircell lining and half cow suede and half leather sock for enhanced breathability

## TSLOPS SANDAL

### YMUL001

umhlanga  
size 6 to 12



var 065 black natan  
Cow leather

- Genuine leather upper
- Detail hand lacing
- Detail stitching
- Locally made lightweight and flexible PU sole with bounceback memory
- EVA footbed with memory foam properties
- Microfibre aircell lining and cow suede sock for enhanced breathability



var 064 choc natan  
Cow leather

Our leather bound story is born out of an ambition to create an international footwear and accessories brand with humble roots and a strong African heritage. Tsonga wholly embodies a collaboration of passionate people, their creativity and their talents to bring about a positive difference in society.

Tsonga has a strong global reach that is aimed at both women and men who hold quality and comfort paramount in their search for the perfect shoes, handbags or accessories. We are simplistic but significant in our designs and the creation process is artisanal. Tsonga strives to create beautiful items that offer the discerning customer long wearability spanning several seasons.

