



Installation guide

How to Replace your NBN™ Backup Battery

Detailed overview on performing the removal, installation and the recycling of your NBN™ backup battery.

For further assistance please call:
1800 660 039

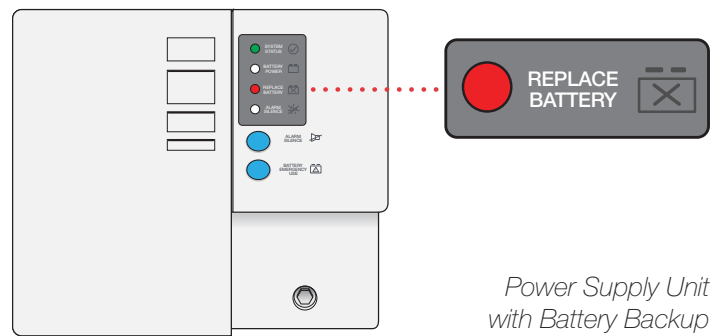


! Please read the following instructions carefully before replacing your backup battery

Step 1: Identifying your NBN Power Supply Unit with Battery Backup

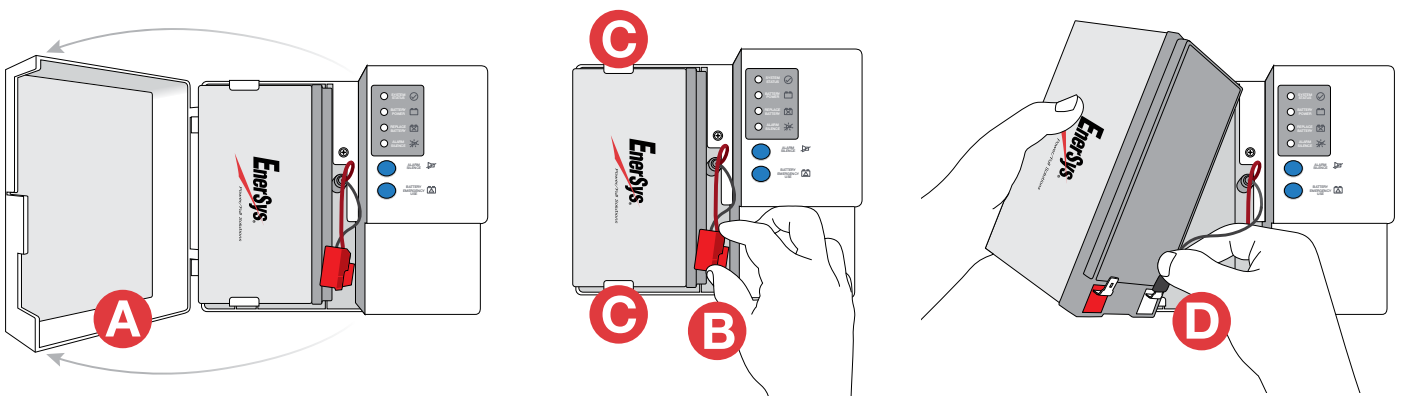
If your Power Supply with Battery Backup is showing a red light next to the 'REPLACE BATTERY' symbol or you hear an alarm (beeping once every 15 minutes) this either means that;

- you need to replace your battery with a new one,
- or that the battery has been removed.



Step 2: Removing your old battery

- Turn off at the power point and disconnect the power supply from the mains power. Once the power supply is disconnected, the unit is safe to open.
- Open the front cover of the Power Supply with Battery Backup (A), the battery operates at 12V-DC, which is safe for disconnection and handling.
- Disconnect the red '+' plug from the battery (B).
- Push the tabs holding the battery, one above and one below, outward and then lift the battery out (C).
- Disconnect the black '-' plug and remove battery (D).



For more information

Phone **1800 660 039**

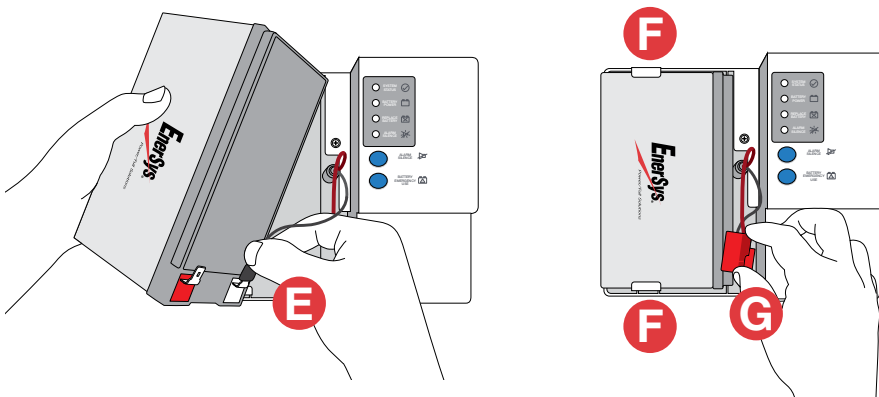
Website <https://nbnbattery.enerSys.com.au>

Email info@enerSys.com.au

⚠ Please read the following instructions carefully before replacing your backup battery

Step 3: Installing your new battery

- Reconnect the black '-' plug to the new battery (E).
- Push the battery retaining tabs outward and insert the battery into the Power Supply Unit (F).
- Reconnect the red '+' plug to the new battery (G).
- Make sure the wires are not being pinched by the battery or front cover.
- Close the front cover.
- Plug the power supply back into the power point and turn the power on.
- The new battery will take 24 hours to completely charge.
- Please retain the old battery as a precaution during this time unless its charge was completely exhausted. Please note, your broadband and/or phone service delivered over the nbn™ network will be **unavailable** while the battery is being replaced and for up to **10 minutes afterwards**.



Step 4: Recycling your old battery

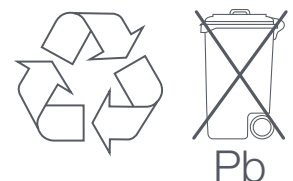
The Sealed Lead Batteries used in your NBN Power Supply Unit are recyclable. **However, these batteries are hazardous waste and cannot be disposed of in your household bin.** Please take your battery to a specialist recycling centre. For information on how and where to recycle, visit:

ABRI (Australian Battery Recycle Initiative)

www.batteryrecycling.org.au/recycling/automotive-batteries

Planet Ark (Recycling Near You)

www.recyclingnearyou.com.au/car-batteries



For more information

Phone **1800 660 039**

Website <https://nbnbattery.enersys.com.au>

Email info@enersys.com.au