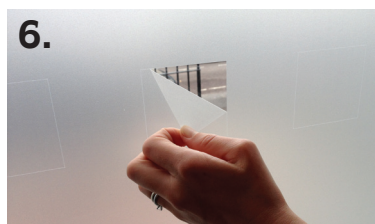


Applying your Etch Window Film

1. Clean the window thoroughly first with detergent and allow to dry (remove any paint spots and inconsistencies). **Tip** : Have a practice with the test film to familiarise yourself with the product.
2. Place the film on a flat clean surface (avoiding carpets!). Carefully peel back the window film leaving the cover tape over the cutouts.
3. Place the window film onto the window via the top two corners (apply the window film on the inside of the window). If unhappy with positioning carefully pull off and place again.
4. Gently smooth the window film downwards removing any air bubbles being careful not to crease the film. Again, the film can be pulled back up to any large bubbles so that they can be removed and then carry on smoothing down. Smooth any small bubbles back and forth until they disappear.
5. Carefully remove the cutout cover tape and flatten down any parts that have pulled up slightly.
6. Remove cutouts with a pin. Smooth over the window film again with the applicator and check from the outside. And that's it!

N.B The adhesive is sticky so please take care when moving the sticker when the backing is off. (it can easily stick to itself!)



10% OFF Your Next Order With This Code:

spin 10

valid for wall stickers and window film!

www.spincollective.co.uk

www.spincollective.co.uk | sales@spincollective.co.uk