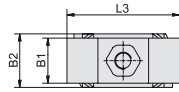
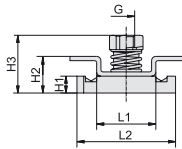
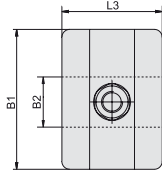
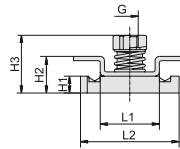
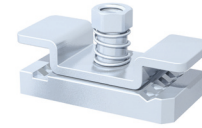


## Channel Rail Adaptor (for Use with Various Channel Rails) Type CRA


**STAUFF Group 1D**

**STAUFF Group 2-3D / 4-5D**


Group STAUFF	DIN	Dimensions (mm/in)									Order Codes (Standard Options)
		Thread G	L1	L2	L3	B1	B2	H1	H2	H3	
1D	1	M6	21	35	40	16	19	6	13	20,5	CRA 1-8/1D M W3
		1/4-20 UNC	.83	1.38	1.57	.63	.75	.24	.51	.81	CRA 1-8/1D U W3
2D	2	M8	21	35	38	53	19	9	17	23,5	CRA 2-3D M W3
		5/16-18 UNC	.83	1.38	1.50	2.09	.75	.35	.67	.93	CRA 2-3D U W3
3D	3										
4D	4	M8	21	35	38	80	19	9	17	23,5	CRA 4-5D M W3
		5/16-18 UNC	.83	1.38	1.50	3.15	.75	.3	.67	.93	CRA 4-5D U W3
5D	5										

### Order Codes

#### Adaptor

**\*CRA\*1-8/1D\*U\*W3**

\* Channel Rail Adaptor

**CRA**

\* STAUFF Group 1D (DIN Group 1)

**1-8/1D**

2D to 3D (DIN Group 2 to 3)

**2-3D**

4D to 5D (DIN Group 4 to 5)

**4-5D**

\* Thread code

Unified coarse (UNC) thread

**U**

Metric ISO thread

**M**

\* Material code

Carbon Steel, zinc/nickel-plated

**W3**

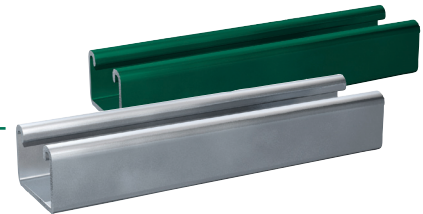
Stainless Steel V4A

1.4401 / 1.4571 (AISI 316 / 316 Ti)

**W5**

The Channel Rail Adaptor, type CRA 1-8/1D is also suitable for Standard Series, STAUFF Group 1 to 8.

All threaded parts are available with Metric ISO thread or unified coarse (UNC) thread according to dimension table. Alternative materials and surface finishings are available upon request. Consult STAUFF for further information.



### Compatibility with Channel Rails

The STAUFF Channel Rail Adaptor, type CRA, is suitable for various channel rails, including the following types:

HALFEN	HILTI	UNISTRUT®	STAUFF (Cushion Clamp Series)
HM 41/41	MQ-21, MQ-41, MQ-52, MQ-72	P1000, P1000T, P1000V, P1000VT, P1001	SCS-048-1-PL, SCS-048-1-GR
HZA 41/22	MQ-21U, MQ-41U, MQ-72U	P2000, P2000T	SCS-120-1-PL, SCS-120-1-GR
HZM 41/41	MQ-21D, MQ-41D, MQ-52-72D	P3003, P3003T, P3300V, P3300VT, P3301	See page A85 for technical information.
HZM 41/22		P4000, P4000T	
HL 41/41, HL 41/B2		P5000, P5000T, P5001, P5500, P5500T, P5501	

Consult STAUFF to check compatibility with additional types of channel rails.