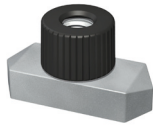
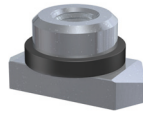


Hexagon Rail Nut

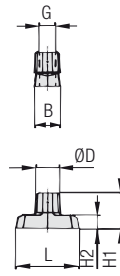
Type SM (for Use with Mounting Rail TS)



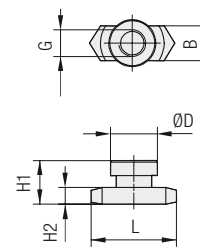
STAUFF Group 1D



STAUFF Group 2D to 5D



STAUFF Group 1D



STAUFF Group 2D to 5D

Order Codes

Hexagon Rail Nut ***SM*1-8/1D*U*W3**

* Hexagon Rail Nut		SM
* STAUFF Group	1D (DIN Group 1) 2D to 5D (DIN Group 2 to 5)	1-8/1D 2-5D
* Thread code	Unified coarse (UNC) thread Metric ISO thread	U M
* Material code	Carbon Steel, untreated Carbon Steel, zinc/nickel-plated Stainless Steel V2A 1.4301 / 1.4305 (AISI 304 / 303) Stainless Steel V4A 1.4401 / 1.4571 (AISI 316 / 316 Ti)	W1 W3 W4 W5

Group STAUFF	DIN	Dimensions (mm/in)						Order Codes (Standard Options)
		Thread G	L	B	H1	H2	ØD	
1D	1	M6	25,5	10,2	13,5	5,5	12	SM 1-8/1D M W3* SM 1-8/1D U W3
		1/4-20 UNC	1.00	.40	.53	.22	.47	
2D	2						SM 2-5D M W3 SM 2-5D U W3	
3D	3	M8	25,5	10,4	13	5		
4D	4	5/16-18 UNC	1.00	.41	.51	.20		
5D	5							

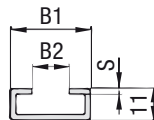
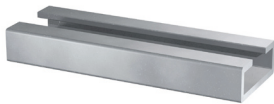
The Hexagon Rail Nut, type SM 1-8/1D is also suitable for Standard Series, STAUFF Group 1 to 8.

All threaded parts are available with Metric ISO thread or unified coarse (UNC) thread according to dimension table. Alternative materials and surface finishings are available upon request. Consult STAUFF for further information.

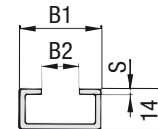
* Standard finishing option for Twin Series group size 1D for markets outside North America is W1 (Carbon Steel, untreated).

Mounting Rail

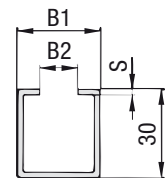
Type TS (for Use with Hexagon Rail Nut SM)



Mounting Rail TS 11



Mounting Rail TS 14



Mounting Rail TS 30

Order Codes

Mounting Rail ***TS*11*-1*W1**

* Mounting Rail		TS
* Height of rail	11 mm / .43 in 14 mm / .55 in 30 mm / 1.18 in	11 14 30
* Length of rail	1 m / 3.28 ft 2 m / 6.56 ft	-1 -2
	Alternative lengths available upon request. Consult STAUFF for further information.	
* Material code	Carbon Steel, untreated Carbon Steel, zinc/nickel-plated Stainless Steel V2A 1.4301 / 1.4305 (AISI 304 / 303) Stainless Steel V4A 1.4401 / 1.4571 (AISI 316 / 316 Ti)	W1 W3 W4 W5

Group STAUFF	DIN	Dimensions (mm/in)			Order Codes (Standard Options)	
		L	B	H1	Length of Rail: 1 m / 3.28 ft	Length of Rail: 2 m / 6.56 ft
1D	1				Height 11 mm / .43 in TS 11-1 W1	Height 11 mm / .43 in TS 11-2 W1
2D	2					
3D	3	28 1.10	11 .43	2 .08	Height 14 mm / .55 in TS 14-1 W1	Height 14 mm / .55 in TS 14-2 W1
4D	4					
5D	5				Height 30 mm / 1.18 in TS 30-1 W1	Height 30 mm / 1.18 in TS 30-2 W1

Mounting Rails, type TS 11/14/30 are suitable for all Twin Series and Standard Series group sizes.

Alternative materials and surface finishings are available upon request. Consult STAUFF for further information.