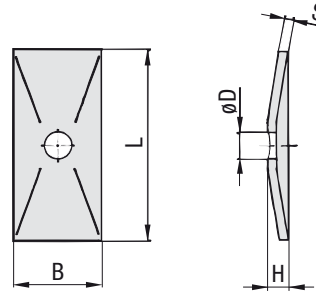
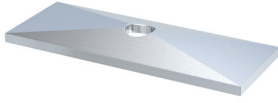


Cover Plate Type GD



Order Codes

Cover Plate

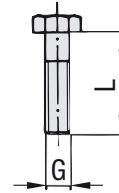
***GD*1D*W3**

* Cover Plate		GD
* STAUFF Group		1D
* Material code	Carbon Steel, zinc/nickel-plated	W3
	Stainless Steel V2A	W4
	1.4301 / 1.4305 (AISI 304 / 303)	W4
	Stainless Steel V4A	W5
	1.4401 / 1.4571 (AISI 316 / 316 Ti)	W5

Group STAUFF	DIN	Dimensions (mm/in)					Order Codes (Standard Options)
		L	B	H	S	ØD	
1D	1	34	30	7	3	7	GD 1D W3
		1.34	1.18	.28	.12	.28	
2D	2	52	30	7	3	9	GD 2D W3
		2.05	1.18	.28	.12	.35	
3D	3	65	30	7	3	9	GD 3D W3
		2.56	1.18	.28	.12	.35	
4D	4	79	30	7	3	9	GD 4D W3
		3.11	1.18	.28	.12	.35	
5D	5	102	30	7	3	9	GD 5D W3
		4.02	1.18	.28	.12	.35	

Alternative materials and surface finishings are available upon request. Consult STAUFF for further information.

Hexagon Head Bolt Type AS



Hexagon Head Bolt AS

(according to DIN 931 / 933 or ANSI / ASME B18.2.1.)

Dimensions applicable only when used with Cover Plate GD

Order Codes

Hexagon Head Bolt

***AS*2D*U*W3**

* Type of bolt	Hexagon Head Bolt (according to DIN 931 / 933 or ANSI / ASME B18.2.1.)	AS
* STAUFF Group		2D
* Thread code	Unified coarse (UNC) thread	U
	Metric ISO thread	M
* Material code	Carbon Steel, zinc/nickel-plated	W3
	Stainless Steel V2A	W4
	1.4301 / 1.4305 (AISI 304 / 303)	W4
	Stainless Steel V4A	W5
	1.4401 / 1.4571 (AISI 316 / 316 Ti)	W5

Group STAUFF	DIN	Dimensions (mm/in)		Order Codes (Standard Options)
		Thread	G x L	
1D	1	M6 x 35		AS 2/1D M W3
		1/4-20 UNC x 1-3/8		AS 2/1D U W3
2D	2	M8 x 35		AS 2D M W3
		5/16-18 UNC x 1-3/8		AS 2D U W3
3D	3	M8 x 45		AS 3D M W3
		5/16-18 UNC x 1-3/4		AS 3D U W3
4D	4	M8 x 50		AS 4D M W3
		5/16-18 UNC x 2		AS 4D U W3
5D	5	M8 x 60		AS 5D M W3
		5/16-18 UNC x 2-1/2		AS 5D U W3

Hexagon Head Bolts, type AS 2/1D are also suitable for Standard Series, STAUFF Group 2.

All threaded parts are available with Metric ISO thread or unified coarse (UNC) thread according to dimension table. Alternative materials and surface finishings are available upon request. Consult STAUFF for further information.