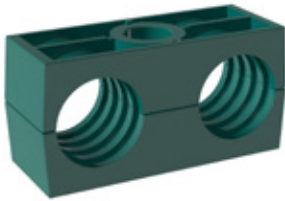


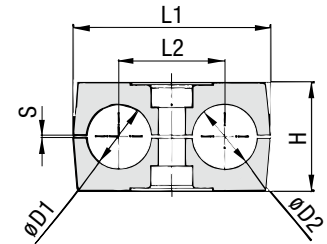
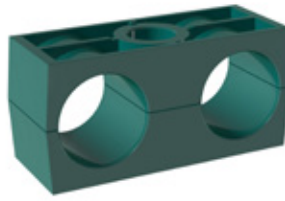
## Clamp Body - Profiled Design

Profiled Inside Surface with Tension Clearance



## Clamp Body - Type H

Smooth Inside Surface w/o Tension Clearance



### Order Codes

#### Clamp Body

**\*1\*06/06\*PP**

One clamp body is consisting of two clamp halves.

\* 1<sup>st</sup> Part of STAUFF Group

**1**

\* Exact outside diameters Ø D1 / Ø D2 (mm)

**06/06**

\* Material code (see below)

**PP**

### Designs & Standard Materials



#### Polypropylene - Profiled Design

Profiled inside surface with tension clearance

Colour: Green

Material code: **PP**



#### Polypropylene - Type H

Smooth inside surface without tension clearance

Colour: Green

Material code: **PPH**



#### Polyamide - Profiled Design

Profiled inside surface with tension clearance

Colour: Black

Material code: **PA**



#### Polyamide - Type H

Smooth inside surface without tension clearance

Colour: Black

Material code: **PAH**

See page A88 for properties and technical information.

### Special Materials

Please consult STAUFF for further details on fire-proof clamp body materials, tested and approved according to several international fire-protection standards.

See page A89 for properties and technical information.

### Product Features

- Proven, tested and trusted product in various markets
- Profiled design recommended for the safe installation of rigid pipes and tubes; type H recommended for the safe installation of hoses and cables
- Available for all commonly used pipe and tube outside diameters
- Environmental protection due to vibration/noise reducing design
- Excellent weathering resistance, even under extreme conditions

Group	STAUFF	DIN	Outside Diameter		Nominal Bore		Order Codes (2 Clamp Halves) (*** = Material)	Dimensions (mm/in)									
			Pipe / Tube / Hose Ø D1 / Ø D2 (mm)	(in)	Pipe (in)	Copper Tube (in)		L1	L2	H	S min.	Type H H	Width				
1D	1	6					106/06 ***										
		6,4	1/4				106,4/06,4 ***										
		8	5/16				108/08 ***	36	20	27	0,6	26,5	30				
		9,5	3/8		1/4		109,5/09,5 ***	1.42	.79	1.06	.02	1.04	1.18				
		10		1/8			110/10 ***										
		12					112/12 ***										
2D	2	12,7	1/2		3/8		212,7/12,7 ***										
		13,5		1/4			213,5/13,5 ***										
		14					214/14 ***										
		15					215/15 ***	53	29	27	0,7	26,5	30				
		16	5/8		1/2		216/16 ***	2.09	1.14	1.06	.03	1.04	1.18				
		17,2		3/8			217,2/17,2 ***										
3D	3	19	3/4				319/19 ***										
		20					320/20 ***										
		21,3		1/2			321,3/21,3 ***	67	36	37	0,7	36,5	30				
		22			3/4		322/22 ***	2.64	1.42	1.46	.03	1.44	1.18				
		25					325/25 ***										
		25,4	1				325,4/25,4 ***										
4D	4	26,9		3/4			426,9/26,9 ***										
		28					428/28 ***	80	45	40	0,7	38	30				
		30					430/30 ***	3.15	1.77	1.57	.03	1.46	1.18				
5D	5	32	1-1/4				532/32 ***										
		33,7		1			533,7/33,7 ***										
		35			1-1/4		535/35 ***	106	56	53	0,7	52	30				
		38	1-1/2				538/38 ***	4.17	2.20	2.09	.03	2.04	1.18				
		40					540/40 ***										
		42		1-1/4			542/42 ***										

Additional outside diameters and combinations of different outside diameters are available upon request. Please consult STAUFF for further information.