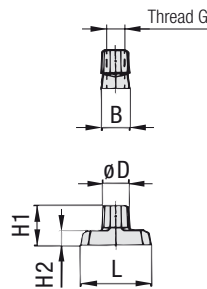
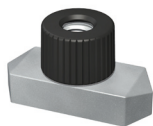


Hexagon Rail Nut

Type SM (for Use with Mounting Rail TS)



Order Codes

Hexagon Rail Nut ***SM*1-8/1D*U*W3**

- * Hexagon Rail Nut **SM**
- * STAUFF Group 1 to 8 (DIN Group 0 to 8) **1-8/1D**
- * Thread code Unified coarse (UNC) thread **U**
Metric ISO thread **M**
- * Material code Carbon Steel, untreated **W1**
Carbon Steel, zinc/nickel-plated **W3**
Stainless Steel V2A 1.4301 / 1.4305 (AISI 304 / 303) **W4**
Stainless Steel V4A 1.4401 / 1.4571 (AISI 316 / 316 Ti) **W5**

Group STAUFF	DIN	Dimensions (mm/in)						Order Codes (Standard Options)
		Thread G	L	B	H1	H2	ØD	
1	0							
1A	1							
2	2							
3	3							
4	4	M6 1/4-20 UNC	25,5 1.00	10,2 .40	13,5 .53	5,5 .22	12 .47	SM 1-8/1D M W3* SM 1-8/1D U W3
5	5							
6	6							
7	7							
8	8							

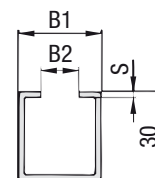
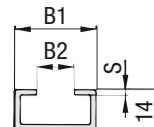
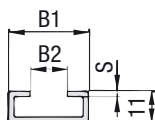
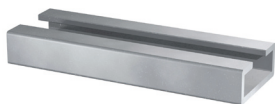
Hexagon Rail Nuts, type SM 1-8/1D are also suitable for Twin Series, STAUFF Group 1D.

All threaded parts are available with Metric ISO thread or unified coarse (UNC) thread according to dimension table. Alternative materials and surface finishings are available upon request. Consult STAUFF for further information.

* Standard finishing option for markets outside North America is W1 (Carbon Steel, untreated)

Mounting Rail

Type TS (for Use with Hexagon Rail Nut SM)



Mounting Rail TS 11

Mounting Rail TS 14

Mounting Rail TS 30

Order Codes

Mounting Rail ***TS*11*-1*W1**

- * Mounting Rail **TS**
- * Height of rail 11 mm / .43 in **11**
14 mm / .55 in **14**
30 mm / 1.18 in **30**
- * Length of rail 1 m / 3.28 ft **-1**
2 m / 6.56 ft **-2**
Alternative lengths available upon request. Consult STAUFF for further information.
- * Material code Carbon Steel, untreated **W1**
Carbon Steel, zinc/nickel-plated **W3**
Stainless Steel V2A 1.4301 / 1.4305 (AISI 304 / 303) **W4**
Stainless Steel V4A 1.4401 / 1.4571 (AISI 316 / 316 Ti) **W5**

Group STAUFF	DIN	Dimensions (mm/in)			Order Codes (Standard Options)	
		B1	B2	S	Length of Rail: 1 m / 3.28ft	Length of Rail: 2 m / 6.56ft
1	0					
1A	1				Height 11 mm / .43 in TS 11-1 W1	Height 11 mm / .43 in TS 11-2 W1
2	2					
3	3					
4	4	28 1.10	11 .43	2 .08	Height 14 mm / .55 in TS 14-1 W1	Height 14 mm / .55 in TS 14-2 W1
5	5					
6	6					
7	7				Height 30 mm / 1.18 in TS 30-1 W1	Height 30 mm / 1.18 in TS 30-2 W1
8	8					

Mounting Rails, type TS 11/14/30 are suitable for all Standard Series and Twin Series group sizes.