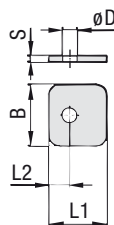
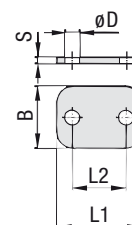


Cover Plate
Type DP



STAUFF Group 1



STAUFF Group 1A to 8

Order Codes

Cover Plate

***DP*1*W3**

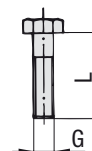
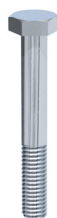
- * Cover Plate **DP**
- * STAUFF Group **1**
- * Material code **W3**
Carbon Steel, zinc/nickel-plated
- W4**
Stainless Steel V2A
1.4301 / 1.4305 (AISI 304 / 303)
- W5**
Stainless Steel V4A
1.4401 / 1.4571 (AISI 316 / 316 Ti)

Group	STAUFF	DIN	Dimensions (mm/in)				ØD	Order Codes (Standard Options)
			L1	L2	B	S		
1	0		28	9.5	30	3	7	DP 1 W3
			1.10	.37	1.18	.12	.28	
1A	1		34	20	30	3	7	DP 1A W3
			1.34	.79	1.18	.12	.28	
2	2		40.5	26	30	3	7	DP 2 W3
			1.59	1.02	1.18	.12	.28	
3	3		48	33	30	3	7	DP 3 W3
			1.89	1.30	1.18	.12	.28	
4	4		57	40	30	3	7	DP 4 W3
			2.24	1.57	1.18	.12	.28	
5	5		70	52	30	3	7	DP 5 W3
			2.76	2.05	1.18	.12	.28	
6	6		86	66	30	3	7	DP 6 W3
			3.39	2.60	1.18	.12	.28	
7	7		118	94	30	5	7	DP 7 W3
			4.65	3.70	1.18	.20	.28	
8	8		144	120	30	5	7	DP 8 W3
			5.67	4.72	1.18	.20	.28	

Alternative materials and surface finishings are available upon request. Consult STAUFF for further information.

Hexagon Head Bolt

Type AS (for Use with Cover Plate DP)



Hexagon Head Bolt AS (according to DIN 931 / 933 or ANSI / ASME B18.2.1.)

Dimensions applicable only when used with Cover Plate DP

Order Codes

Hexagon Head Bolt

***AS*3*U*W3**

- * Type of bolt Hexagon Head Bolt (according to DIN 931 / 933 or ANSI / ASME B18.2.1.) **AS**
- * STAUFF Group **3**
- * Thread code **U**
Unified coarse (UNC) thread
M
Metric ISO thread
- * Material code **W3**
Carbon Steel, zinc/nickel-plated
- W4**
Stainless Steel V2A
1.4301 / 1.4305 (AISI 304 / 303)
- W5**
Stainless Steel V4A
1.4401 / 1.4571 (AISI 316 / 316 Ti)

Group	STAUFF	DIN	Dimensions (mm/in)		Order Codes (Standard Options)
			Thread	G x L	
1	0		M6 x 30		AS 1/1A M W3
			1/4-20 UNC x 1-1/4		AS 1/1A U W3
1A	1		M6 x 30		AS 1/1A M W3
			1/4-20 UNC x 1-1/4		AS 1/1A U W3
2	2		M6 x 35		AS 2/1D M W3
			1/4-20 UNC x 1-3/8		AS 2/1D U W3
3	3		M6 x 40		AS 3 M W3
			1/4-20 UNC x 1-1/2		AS 3 U W3
4	4		M6 x 45		AS 4 M W3
			1/4-20 UNC x 1-7/8		AS 4 U W3
5	5		M6 x 60		AS 5 M W3
			1/4-20 UNC x 2-3/8		AS 5 U W3
6	6		M6 x 70		AS 6 M W3
			1/4-20 UNC x 2-3/4		AS 6 U W3
7	7		M6 x 100		AS 7 M W3
			1/4-20 UNC x 4		AS 7 U W3
8	8		M6 x 125		AS 8 M W3
			1/4-20 UNC x 4-7/8		AS 8 U W3

Hexagon Head Bolts, type AS 2/1D are also suitable for Twin Series, STAUFF Group 1D.