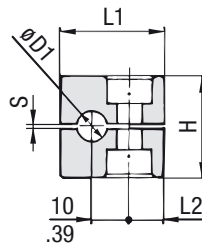
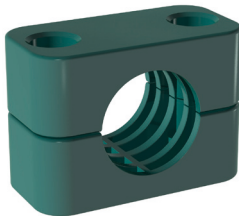
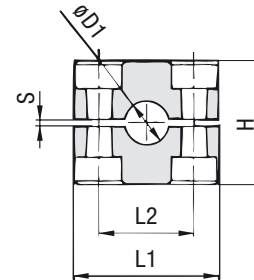


Clamp Body - Profiled Design

Profiled Inside Surface with Tension Clearance



STAUFF Group 1



STAUFF Group 1A to 8

Order Codes

Clamp Body

Clamp Body, STAUFF Group 1A

*1*06*PP

*1*06A*PP

One clamp body is consisting of two clamp halves.

* STAUFF Group

1

* Exact outside diameter Ø D1 (mm)

06

* Material code (see below)

PP

Standard Materials



Polypropylene

Colour: Green
Material code: **PP**



Polyamide

Colour: Black
Material code: **PA**



Thermoplastic Elastomer (87 Shore-A)

Colour: Black
Material code: **SA**



Aluminium

Colour: Self-Colour
Material code: **AL**

See page A88 for material properties and technical information.

Special Materials

Please consult STAUFF for further details on fire-proof clamp body materials, tested and approved according to several international fire-protection standards.

See page A89 for material properties and technical information.

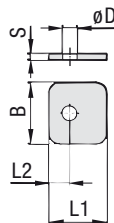
Product Features

- Proven, tested and trusted product in various markets
- Recommended for the safe installation of rigid pipes and tubes
- Available for all commonly used pipe and tube outside diameters
- Environmental protection due to vibration/noise reducing design
- Excellent weathering resistance, even under extreme conditions

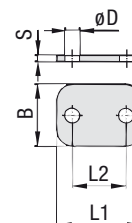
Group	STAUFF	DIN	Outside Diameter		Nominal Bore		Order Codes (2 Clamp Halves) (** = Material)	Dimensions (mm/in)				
			Ø D1 (mm)	(in)	Pipe (in)	Copper Tube (in)		L1	L2	H	S min.	Width
1	0	6					106 **	28	.37	1.06	.02	1.18
		6,4	1/4			106,4 **						
		8	5/16			108 **						
		9,5	3/8		1/4	109,5 **						
		10		1/8		110 **						
		12				112 **						
1A	1	6					106A **	37	.79	1.06	.02	1.18
		6,4	1/4			106,4A **						
		8	5/16			108A **						
		9,5	3/8		1/4	109,5A **						
		10		1/8		110A **						
		12				112A **						
2	2	12,7	1/2		3/8		212,7 **	42	1.02	1.30	.02	1.18
		13,5		1/4		213,5 **						
		14				214 **						
		15				215 **						
		16	5/8		1/2	216 **						
		17,2		3/8		217,2 **						
		18				218 **						
3	3	19	3/4				319 **	50	1.30	1.42	.02	1.18
		20				320 **						
		21,3		1/2		321,3 **						
		22			3/4	322 **						
		25				325 **						
		25,4	1			325,4 **						
4	4	26,9		3/4			426,9 **	59	1.57	1.65	.02	1.18
		28				428 **						
		28,6			1	428,6 **						
		30				430 **						
		32				432 **						
5	5	32	1-1/4				532 **	71	2.05	2.28	.03	1.18
		33,7		1		533,7 **						
		35			1-1/4	535 **						
		38	1-1/2			538 **						
		40				540 **						
		41,3		1-1/2		541,3 **						
		42		1-1/4		542 **						
6	6	44,5	1-3/4				644,5 **	86	2.60	2.60	.03	1.18
		48,3		1-1/2		648,3 **						
		50,8	2			650,8 **						
		54			2	654 **						
7	7	57,2	2-1/4				757,2 **	121	3.70	3.66	.03	1.18
		60,3		2		760,3 **						
		63,5	2-1/2			763,5 **						
		70	2-3/4			770 **						
		73		2-1/2 (ANSI B 36-10)		773 **						
		76,1	3	2-1/2 (DIN EN 10220)		776,1 **						
8	8	88,9		3			888,9 **	147	4.72	4.65	.03	1.18
		102	4	3-1/2		8102L **						

Additional outside diameters are available upon request. Please consult STAUFF for further information.

Cover Plate Type DP



STAUFF Group 1



STAUFF Group 1A to 8

Order Codes

Cover Plate

*DP*1*W3

* Cover Plate **DP*** STAUFF Group **1*** Material code Carbon Steel, zinc/nickel-plated **W3**Stainless Steel V2A **W4**

1.4301 / 1.4305 (AISI 304 / 303)

Stainless Steel V4A **W5**

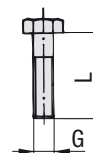
1.4401 / 1.4571 (AISI 316 / 316 Ti)

Group	STAUFF	DIN	Dimensions (mm/in)				ØD	Order Codes (Standard Options)
			L1	L2	B	S		
1	0		28	9.5	30	3	7	DP 1 W3
			1.10	.37	1.18	.12	.28	
1A	1		34	20	30	3	7	DP 1A W3
			1.34	.79	1.18	.12	.28	
2	2		40.5	26	30	3	7	DP 2 W3
			1.59	1.02	1.18	.12	.28	
3	3		48	33	30	3	7	DP 3 W3
			1.89	1.30	1.18	.12	.28	
4	4		57	40	30	3	7	DP 4 W3
			2.24	1.57	1.18	.12	.28	
5	5		70	52	30	3	7	DP 5 W3
			2.76	2.05	1.18	.12	.28	
6	6		86	66	30	3	7	DP 6 W3
			3.39	2.60	1.18	.12	.28	
7	7		118	94	30	5	7	DP 7 W3
			4.65	3.70	1.18	.20	.28	
8	8		144	120	30	5	7	DP 8 W3
			5.67	4.72	1.18	.20	.28	

Alternative materials and surface finishings are available upon request. Consult STAUFF for further information.

Hexagon Head Bolt

Type AS (for Use with Cover Plate DP)



Hexagon Head Bolt AS (according to DIN 931 / 933 or ANSI / ASME B18.2.1.)

Dimensions applicable only when used with Cover Plate DP

Order Codes

Hexagon Head Bolt

*AS*3*U*W3

* Type of bolt Hexagon Head Bolt (according to DIN 931 / 933 or ANSI / ASME B18.2.1.) **AS*** STAUFF Group **3*** Thread code Unified coarse (UNC) thread **U**
Metric ISO thread **M*** Material code Carbon Steel, zinc/nickel-plated **W3**Stainless Steel V2A **W4**

1.4301 / 1.4305 (AISI 304 / 303)

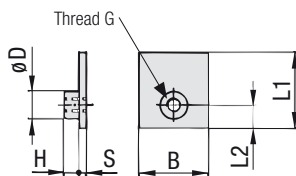
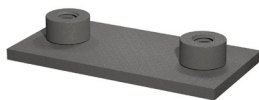
Stainless Steel V4A **W5**

1.4401 / 1.4571 (AISI 316 / 316 Ti)

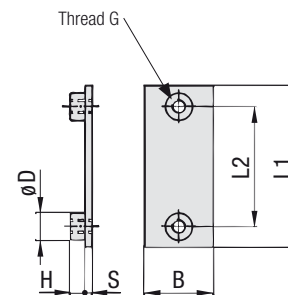
Group	STAUFF	DIN	Dimensions (mm/in)		Order Codes (Standard Options)
			Thread	G x L	
1	0		M6 x 30		AS 1/1A M W3
			1/4-20 UNC x 1-1/4		AS 1/1A U W3
1A	1		M6 x 30		AS 1/1A M W3
			1/4-20 UNC x 1-1/4		AS 1/1A U W3
2	2		M6 x 35		AS 2/1D M W3
			1/4-20 UNC x 1-3/8		AS 2/1D U W3
3	3		M6 x 40		AS 3 M W3
			1/4-20 UNC x 1-1/2		AS 3 U W3
4	4		M6 x 45		AS 4 M W3
			1/4-20 UNC x 1-7/8		AS 4 U W3
5	5		M6 x 60		AS 5 M W3
			1/4-20 UNC x 2-3/8		AS 5 U W3
6	6		M6 x 70		AS 6 M W3
			1/4-20 UNC x 2-3/4		AS 6 U W3
7	7		M6 x 100		AS 7 M W3
			1/4-20 UNC x 4		AS 7 U W3
8	8		M6 x 125		AS 8 M W3
			1/4-20 UNC x 4-7/8		AS 8 U W3

Hexagon Head Bolts, type AS 2/1D are also suitable for Twin Series, STAUFF Group 1D.

**Single Weld Plate
Type SP**



STAUFF Group 1



STAUFF Group 1A to 8

Order Codes

Weld Plate

***SP*1*U*W2**

* Single Weld Plate

SP

* STAUFF Group

1

* Thread code

Unified coarse (UNC) thread
Metric ISO thread

U
M

* Material code

Carbon Steel, untreated
Carbon Steel, phosphated
Carbon Steel, zinc/nickel-plated

Stainless Steel V2A
1.4301 / 1.4305 (AISI 304 / 303)
Stainless Steel V4A
1.4401 / 1.4571 (AISI 316 / 316 Ti)

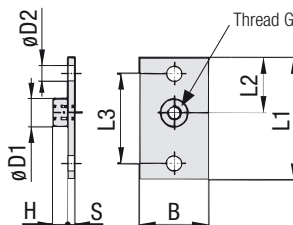
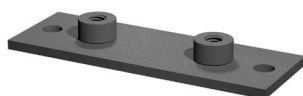
W1
W2
W3

W4
W5

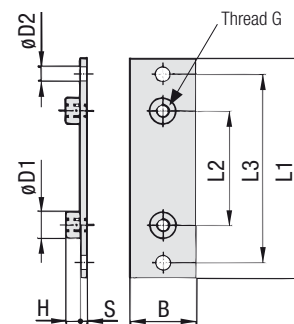
Group	STAUFF	DIN	Dimensions (mm/in)	Thread G	L1	L2	B	S	H	ØD	Order Codes (Standard Options)
1	0		M6	31,5	10	30	3	6,5	12		SP 1 M W2
			1/4-20 UNC	1.24	0.39	1.18	.12	.26	.47		SP 1 U W2
1A	1		M6	36	20	30	3	6,5	12		SP 1A M W2
			1/4-20 UNC	1.42	0.79	1.18	.12	.26	.47		SP 1A U W2
2	2		M6	42	26	30	3	6,5	12		SP 2 M W2
			1/4-20 UNC	1.65	1.02	1.18	.12	.26	.47		SP 2 U W2
3	3		M6	50	33	30	3	6,5	12		SP 3 M W2
			1/4-20 UNC	1.97	1.30	1.18	.12	.26	.47		SP 3 U W2
4	4		M6	60	40	30	3	6,5	12		SP 4 M W2
			1/4-20 UNC	2.36	1.57	1.18	.12	.26	.47		SP 4 U W2
5	5		M6	71	52	30	3	6,5	12		SP 5 M W2
			1/4-20 UNC	2.80	2.05	1.18	.12	.26	.47		SP 5 U W2
6	6		M6	88	66	30	3	6,5	12		SP 6 M W2
			1/4-20 UNC	3.46	2.60	1.18	.12	.26	.47		SP 6 U W2
7	7		M6	122	94	30	5	6,5	12		SP 7 M W2
			1/4-20 UNC	4.80	3.70	1.18	.20	.26	.47		SP 7 U W2
8	8		M6	148	120	30	5	6,5	12		SP 8 M W2
			1/4-20 UNC	5.83	4.72	1.18	.20	.26	.47		SP 8 U W2

All threaded parts are available with Metric ISO thread or unified coarse (UNC) thread according to dimension table. Alternative materials and surface finishings are available upon request. Consult STAUFF for further information.

**Elongated Weld Plate
Type SPV**



STAUFF Group 1



STAUFF Group 1A to 8

Order Codes

Weld Plate

***SPV*1*U*W2**

* Elongated Weld Plate

SPV

* STAUFF Group

1

* Thread code

Unified coarse (UNC) thread
Metric ISO thread

U
M

* Material code

Carbon Steel, untreated
Carbon Steel, phosphated
Carbon Steel, zinc/nickel-plated

Stainless Steel V2A
1.4301 / 1.4305 (AISI 304 / 303)
Stainless Steel V4A
1.4401 / 1.4571 (AISI 316 / 316 Ti)

W1
W2
W3

W4
W5

Group	STAUFF	DIN	Dimensions (mm/in)	Thread G	L1	L2	L3	B	S	H	ØD1	ØD2	Order Codes (Standard Options)
1	0		M6	58	24,5	44	30	3	6,5	12	6,5	6,5	SPV 1 M W2
			1/4-20 UNC	2.28	.96	1.73	1.18	.12	.26	.47	.26		
1A	1		M6	64	20	50	30	3	6,5	12	6,5	6,5	SPV 1A M W2
			1/4-20 UNC	2.52	.79	1.97	1.18	.12	.26	.47	.26		
2	2		M6	70	26	56	30	3	6,5	12	6,5	6,5	SPV 2 M W2
			1/4-20 UNC	2.76	1.02	2.20	1.18	.12	.26	.47	.26		
3	3		M6	78	33	64	30	3	6,5	12	6,5	6,5	SPV 3 M W2
			1/4-20 UNC	3.07	1.30	2.52	1.18	.12	.26	.47	.26		
4	4		M6	87	40	73	30	3	6,5	12	6,5	6,5	SPV 4 M W2
			1/4-20 UNC	3.43	1.57	2.87	1.18	.12	.26	.47	.26		
5	5		M6	100	52	86	30	3	6,5	12	6,5	6,5	SPV 5 M W2
			1/4-20 UNC	3.94	2.05	3.39	1.18	.12	.26	.47	.26		
6	6		M6	115	66	100	30	3	6,5	12	6,5	6,5	SPV 6 M W2
			1/4-20 UNC	4.53	2.60	3.94	1.18	.12	.26	.47	.26		
7	7		M6	150	94	136	30	5	6,5	12	6,5	6,5	SPV 7 M W2
			1/4-20 UNC	5.91	3.70	5.35	1.18	.20	.26	.47	.26		
8	8		M6	178	120	162	30	5	6,5	12	6,5	6,5	SPV 8 M W2
			1/4-20 UNC	7.01	4.72	6.38	1.18	.20	.26	.47	.26		

All threaded parts are available with Metric ISO thread or unified coarse (UNC) thread according to dimension table. Alternative materials and surface finishings are available upon request. Consult STAUFF for further information.



① Type of Installation

Please select the type of installation (e.g. Weld Plates, Rail Nuts, etc.) and add the corresponding Code to position ① of the order code for your clamp assembly.

Without Installation Equipment
Code: **none**

Installation on Weld Plate

Single Weld Plate
Code: **SP**

Elongated Weld Plate
Code: **SPV**

Twin Weld Plate (for STAUFF Group 1 to 6 only)
Code: **DSP**

Group Weld Plate (for STAUFF Group 1 to 6 only)
Code: **RAP**

Angled Weld Plate (for STAUFF Group 1 to 6 only)
Code: **WSP**

Bridge Weld Plate (for STAUFF Group 1A to 6 only)
Code: **BSP**

Installation on Mounting / Channel Rail

Hexagon Rail Nut
Code: **SM**

Channel Rail Adaptor
Code: **CRA**

② Group Size & Diameter

Please select the required group size and diameter and add the corresponding Code to position ② of the order code for your clamp assembly.

Group	Outside Diameter	Availability of Clamp Body Materials & Designs					Code
		STAUFF (DIN)	P / T / H (mm)	Profiled Design	Type H	Type RI	
1 (0)	6		●	●	○	○	106
	6,4		●	●	○	○	106,4
	8		●	●	○	○	108
	9,5		●	●	○	○	109,5
	10		●	●	○	○	110
1A (1)	12		●	●	○	○	112
	6		●	●	○	●	106A
	6,4		●	●	○	●	106,4A
	8		●	●	○	○	108A
	9,5		●	●	○	●	109,5A
2 (2)	10		●	●	○	●	110A
	12		●	●	○	●	112A
	12,7		●	●	○	●	212,7
	13,5		●	●	○	○	213,5
	14		●	●	○	●	214
	15		●	●	○	○	215
	16		●	●	○	○	216
3 (3)	17,2		●	●	○	○	217,2
	18		●	●	○	●	218
	13,4		○	●	○	○	313,4
	17,4		○	●	○	○	317,4
	19		●	●	○	●	319
	20		●	●	○	●	320
	20,5		○	●	○	○	320,5
4 (4)	21,3		●	●	○	●	321,3
	22		●	●	○	○	322
	23,9		○	●	○	○	323,9
	25		●	●	○	○	325
	25,4		●	●	○	●	325,4
	6		○	○	●	○	406
	8		○	○	●	○	408
5 (5)	10		○	○	●	○	410
	12		○	○	●	○	412
	12,7		○	○	●	○	412,7
	14		○	○	●	○	414
	15		○	○	●	○	415
	16		○	○	●	○	416
	17,2		○	○	●	○	417,2
	18		○	○	●	○	418
	19		○	○	●	○	419
	26,9		●	●	○	○	426,9
	28		●	●	○	○	428
	28,6		●	○	○	○	428,6
	30		●	●	○	○	430
	32		●	●	○	○	432

Group	Outside Diameter	Availability of Clamp Body Materials & Designs					Code
		STAUFF (DIN)	P / T / H (mm)	Profiled Design	Type H	Type RI	
5 (5)	27,8		○	●	○	○	527,8
	32		●	●	○	○	532
	33,7		●	●	○	○	533,7
	35		●	●	○	○	535
	35,7		○	●	○	○	535,7
	38		●	●	○	○	538
	40		●	●	○	○	540
	41,3		●	○	○	○	541,3
	42		●	●	○	○	542
	43,8		○	●	○	○	543,8
6 (6)	20		○	○	●	○	620
	21,3		○	○	●	○	621,3
	22		○	○	●	○	622
	25		○	○	●	○	625
	26,9		○	○	●	○	626,9
	28		○	○	●	○	628
	30		○	○	●	○	630
	32		○	○	●	○	632
	44,5		●	●	○	○	644,5
	48,3		●	●	○	○	648,3
7 (7)	49,8		○	●	○	○	649,8
	50,8		●	●	○	○	650,8
	54		●	●	○	○	654
	57,2		●	●	○	○	757,2
	60,3		●	●	○	○	760,3
	63,5		●	●	○	○	763,5
	70		●	●	○	○	770
	73		●	●	○	○	773
8 (8)	76,1		●	●	○	○	776,1
	88,9		●	●	○	○	888,9
	102		●	●	○	8102L	

● Standard Option

Additional outside diameters are available upon request. Please consult STAUFF for further information.

Please see pages A24 and A25 with detailed order examples for some of the most popular Standard Series clamp assemblies.

③ Clamp Body Design & Material

Please select the design and material of your clamp body and add the corresponding Code to position ③ of the order code for your clamp assembly.

Please check the availability of the selected clamp body design and material according to the matrix table in ②.

Profiled Design



Polypropylene
Code: **PP**



Polyamide
Code: **PA**



Thermoplastic Elastomer (87 Shore-A)
Code: **SA**



Aluminium
Code: **AL** (for STAUFF Group 1A to 6 only)

Type H (Smooth)



Polypropylene
Code: **PPH**



Polyamide
Code: **PAH**



Thermoplastic Elastomer (87 Shore-A)
Code: **SAH**

Type RI (with Rubber Insert)



Polypropylene
Code: **PPR** (for STAUFF Group 4 and 6 only)



Polyamide
Code: **PAR** (for STAUFF Group 4 and 6 only)

Type ACT (Anti Corrosion Technology)



Flame Retardant Polypropylene (PPV0)
with Integrated Rubber Strips made of
Anti Corrosion Elastomer (ACE)
Code: **ACT** (for STAUFF Group 1A, 2 and 3 only)

See page A88 for material properties and technical information.

Please consult STAUFF for further details on fire-proof clamp body materials, tested and approved according to several international fire-protection standards.

④ Mounting & Fitting Combination

Please select the mounting and fitting combination (e.g. bolts, screws, cover plates, etc.) and add the corresponding Code to position ④ of the order code for your clamp assembly.

Installation with Cover Plate and Bolts

Cover Plate DP with
Hexagon Head Bolts AS
Code: **DP-AS**

Cover Plate DP with
Socket Cap Screws IS
Code: **DP-IS**

Installation with Locking Plate and Bolts

Safety Locking Plate SIG with
Stacking Bolts AF
Code: **SIG-AF**

Installation with Inserts and Bolts

Inserts EP (Plastic) with
Hexagon Head Bolts ASE
Code: **EP-AS**

Inserts ES (Steel) with
Hexagon Head Bolts ASE
Code: **ES-AS**

Installation with Bolts only

Socket Cap Screws IS with Washers
Code: **IS**

Slotted Head Screws LI with Washers
Code: **LI** (for STAUFF Group 1 to 6 only)

⑤ Thread Type

Please select the required thread type and add the corresponding Code to position ⑤ of the order code for your clamp assembly.

Unified coarse (UNC) thread
Code: **U**

Metric ISO thread
Code: **M**

All threaded parts are available with Metric ISO thread or unified coarse (UNC) thread according to dimension table.

⑥ Material & Surface Finishing

Please select the required material & surface finishing of the metal parts and add the corresponding Code to position ⑥ of the order code for your clamp assembly.

Metal parts made of Carbon Steel, untreated **W1**

Metal parts made of Carbon Steel, phosphated **W2**

Metal parts made of Carbon Steel, zinc/nickel-plated **W3**

Metal parts made of Stainless Steel V2A
1.4301 / 1.4305 (AISI 304 / 303) **W4**

Metal parts made of Stainless Steel V4A
1.4401 / 1.4571 (AISI 316 / 316 Ti) **W5**

Weld Plate made of Carbon Steel, phosphated; Other
metal parts made of Carbon Steel, zinc/nickel-plated **W10**

Rail Nuts made of Carbon Steel, untreated; Other
metal parts made of Carbon Steel, zinc/nickel-plated **W11**

Individual combinations of alternative materials and surface finishings are available upon request. Consult STAUFF for further information.

⑦ Assembling & Kitting

If required, please select an additional assembling and kitting option and add the corresponding Code to the last position of the order code for your clamp assembly.

Components supplied separately

Code: **none** (standard option)

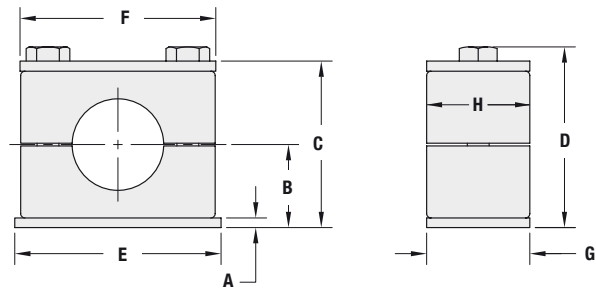
Components assembled

Code: **#A** (special option)

Components packed in kits

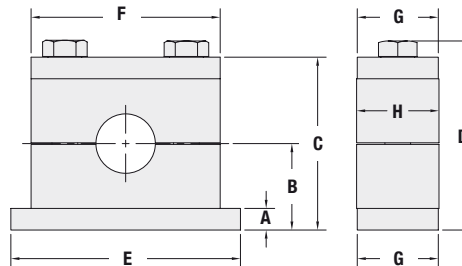
Code: **#K** (special option)

Dimensions and Weights of Clamp Assemblies



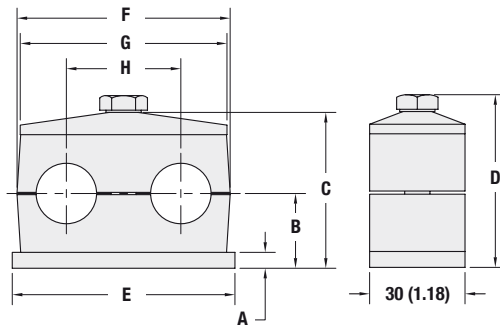
Standard Series (DIN 3015, Part 1)

Group	STAUFF	DIN	Dimensions (mm/in)										Weight per 100 Pcs. SP ** PP-DP-AS *** (kg/lbs)		
			A	B		C		D			E	F		G	H
				Profiled Design	Type H (Smooth)	Profiled Design	Type H (Smooth)	Profiled Design	Type H (Smooth)	Type H (Smooth)					
1	0		3	16,5	16	33	32	37	36	31,5	28	30	30	6,20	
			.12	.65	.63	1.30	1.26	1.46	1.42	1.24	1.10	1.18	1.18	13,64	
1A	1		3	16,5	16	33	32	37	36	36	34	30	30	8,10	
			.12	.65	.63	1.30	1.26	1.46	1.42	1.41	1.33	1.18	1.18	17,82	
2	2		3	19,5	19	39	38	43	42	42	40,5	30	30	9,40	
			.12	.77	0.75	1.54	1.50	1.69	1.65	1.65	1.59	1.18	1.18	20,68	
3	3		3	21	20,75	42	41,5	46	45,5	50	48	30	30	11,20	
			.12	.83	.82	1.65	1.64	1.81	1.80	1.96	1.88	1.18	1.18	24,64	
4	4		3	24	23,75	48	47,5	52	51,5	60	57	30	30	13,70	
			.12	.94	.94	1.89	1.87	2.05	2.03	2.36	2.24	1.18	1.18	30,14	
5	5		3	32	31,25	64	62,5	68	66,5	71	70	30	30	17,10	
			.12	1.26	1.23	2.52	2.46	2.68	2.62	2.79	2.75	1.18	1.18	37,62	
6	6		3	36	35,25	72	70,5	76	74,5	88	86	30	30	21,30	
			.12	1.42	1.39	2.83	2.78	2.99	2.94	3.46	3.38	1.18	1.18	46,86	
7	7		5	51,5	51	103	102	107	106	122	118	30	30	42,10	
			.20	2.03	2.01	4.06	4.02	4.21	4.17	4.81	4.65	1.18	1.18	92,62	
8	8		5	64	63	128	126	132	130	148	144	30	30	44,00	
			.20	2.52	2.48	5.04	4.96	5.20	5.12	5.83	5.67	1.18	1.18	96,80	



Heavy Series (DIN 3015, Part 2)

Group	STAUFF	DIN	Dimensions (mm/in)										Weight per 1 Pc. SPAL *** PP-DPAL-AS *** (kg/lbs)				
			A	B		C		D			E	F		PP/ PA/SA	AL	G	H
				Profiled Design	Type H (Smooth)	Profiled Design	Type H (Smooth)	Profiled Design	Type H (Smooth)	Type H (Smooth)							
3S	1		8	24	23,25	48	46,5	54,4	52,9	74	55	56	30	30,5	0,32		
			.31	.94	.92	1.89	1.83	2.14	2.09	2.91	2.16	2.20	1.18	1.20	.70		
4S	2		8	32	31,25	64	62,5	70,4	68,9	86	70	70	30	30,5	0,40		
			.31	1.26	1.23	2.52	2.46	2.77	2.72	3.39	2.76	2.76	1.18	1.20	.88		
5S	3		8	38	37	76	74	82,4	80,4	100	85	85	30	30,5	0,49		
			.31	1.50	1.46	2.99	2.91	3.24	3.17	3.94	3.35	3.35	1.18	1.20	1.08		
6S	4		10	54,5	53,5	109	107	116,5	114,5	140	115	120	45	45	1,21		
			.39	2.15	2.11	4.29	4.21	4.59	4.51	5.51	4.53	4.72	1.77	1.77	2,66		
7S	5		10	70		140		150		180	154	152	60	60	2,30		
			.39	2.76		5.51		5.91		7.09	6.06	5.98	2.36	2,36	5,06		
8S	6		15	99		198		210,5		226	206	208	80	80	6,00		
			.59	3.90		7.80		8.29		8.90	8.11	8.19	3.15	3.15	13,20		
9S	7		15	115		230		245		270	251	255	90	91	8,70		
			.59	4.53		9.06		9.65		10.63	9.88	10.04	3.54	3.58	19,14		
10S	8		25	160		320		338,7		340	336	326	120	120	22,16		
			.98	6.30		12.60		13.33		13.39	13.22	12.83	4.72	4.72	48,75		
11S	9		30	235		470		488,7		520	470	470	160	162	54,11		
			1.18	9.25		18.50		19.24		20.47	18.50	18.50	6.30	6.38	119,04		
12S	10		30	295		590		608,7		680	630	630	180	182	77,40		
			1.18	11.61		23.23		23.96		26.77	24.80	24.80	7.09	7.16	170,28		

Dimensions & Weights of Clamp Assemblies

Twin Series (DIN 3015, Part 3)

Group	STAUFF	DIN	Dimensions (mm/in)										Weight per 100 Pcs. SP**/**PP-GD-AS*** (kg/lbs)	
			A	B		C		D		E	F	G		H
				Profiled Design	Type H (Smooth)	Profiled Design	Type H (Smooth)	Profiled Design	Type H (Smooth)					
1D	1		3	16,5	16,25	37	36,5	41	40,5	37	36	34	20	7,60
			.12	.65	.64	1.46	1.44	1.61	1.59	1.46	1.42	1.34	.79	16.72
2D	2		5	18,5	18,25	39	38,5	44	43,5	55	53	52	29	13,50
			.20	.73	.72	1.54	1.52	1.73	1.71	2.17	2.09	2.05	1.14	29.70
3D	3		5	23,5	23,25	49	48,5	54	53,5	70	67	65	36	17,70
			.20	.93	.92	1.93	1.91	2.13	2.11	2.76	2.64	2.56	1.42	38.94
4D	4		5	25	24	52	50	57	55	85	80	79	45	20,40
			.20	.98	.94	2.05	1.97	2.24	2.17	3.35	3.15	3.11	1.77	44.88
5D	5		5	31,5	31	65	64	70	69	110	106	102	56	27,70
			.20	1.24	1.22	2.56	2.52	2.76	2.72	4.33	4.17	4.02	2.20	60.94

Packaging Units (Selection)
Standard Series (DIN 3015, Part 1)
Clamp Bodies (Polypropylene / Polyamide)

Group	STAUFF	DIN	Quantity per Bag (in Pcs.)
1 - 6	0 - 6		25
7 + 8	7 + 8		10

Clamp Bodies (Aluminium)

Group	STAUFF	DIN	Quantity per Bag (in Pcs.)
1 - 5	0 - 5		25
6	6		10

**Weld Plates (Type SP)
Cover Plates (Type DP)**

Group	STAUFF	DIN	Quantity per Bag (in Pcs.)
1 - 6	0 - 6		25
7 + 8	7 + 8		10

**Hexagon Rail Nut (Type SM)
Channel Rail Adaptor (Type CRA)**

Group	STAUFF	DIN	Quantity per Bag (in Pcs.)
1 - 8	0 - 8		50

Heavy Series (DIN 3015, Part 2)
Clamp Bodies (Polypropylene / Polyamide)

Group	STAUFF	DIN	Quantity per Bag (in Pcs.)
3S - 6S	1 - 4		20
7S	5		10
8S - 12S	6 - 10		1

Clamp Bodies (Aluminium)

Group	STAUFF	DIN	Quantity per Bag (in Pcs.)
3S - 7S	1 - 5		10
8S - 12S	6 - 10		1

**Weld Plates (Type SPAL)
Cover Plates (Type DPAL)**

Group	STAUFF	DIN	Quantity per Bag (in Pcs.)
3S - 6S	1 - 4		20
7S	5		10
8S - 12S	6 - 10		1

**Mounting Rail Nut (Type GMV)
Channel Rail Adaptor (Type CRA)**

Group	STAUFF	DIN	Quantity per Bag (in Pcs.)
3S - 6S	1 - 4		40

Twin Series (DIN 3015, Part 3)
Clamp Bodies (Polypropylene / Polyamide)

Group	STAUFF	DIN	Quantity per Bag (in Pcs.)
1D - 4D	1 - 4		25
5D	5		10

**Weld Plates (Type SPAL)
Cover Plates (Type DPAL)**

Group	STAUFF	DIN	Quantity per Bag (in Pcs.)
1D - 4D	1 - 4		25
5D	5		10

**Hexagon Rail Nut (Type SM)
Channel Rail Adaptor (Type CRA)**

Group	STAUFF	DIN	Quantity per Bag (in Pcs.)
1D	1		50
2D - 5D	2 - 5		25

Consult STAUFF and ask for standard packaging units for further components or special packaging options.