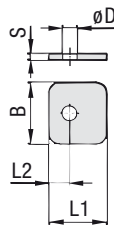
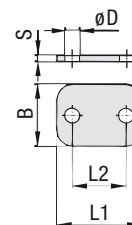


## Cover Plate Type DP



STAUFF Group 1



STAUFF Group 1A to 8

### Order Codes

#### Cover Plate

\*DP\*1\*W3

\* Cover Plate **DP**\* STAUFF Group **1**\* Material code Carbon Steel, zinc/nickel-plated **W3**Stainless Steel V2A **W4**

1.4301 / 1.4305 (AISI 304 / 303)

Stainless Steel V4A **W5**

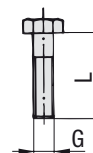
1.4401 / 1.4571 (AISI 316 / 316 Ti)

Group	STAUFF	DIN	Dimensions (mm/in)				ØD	Order Codes (Standard Options)
			L1	L2	B	S		
1	0		28	9.5	30	3	7	DP 1 W3
			1.10	.37	1.18	.12	.28	
1A	1		34	20	30	3	7	DP 1A W3
			1.34	.79	1.18	.12	.28	
2	2		40.5	26	30	3	7	DP 2 W3
			1.59	1.02	1.18	.12	.28	
3	3		48	33	30	3	7	DP 3 W3
			1.89	1.30	1.18	.12	.28	
4	4		57	40	30	3	7	DP 4 W3
			2.24	1.57	1.18	.12	.28	
5	5		70	52	30	3	7	DP 5 W3
			2.76	2.05	1.18	.12	.28	
6	6		86	66	30	3	7	DP 6 W3
			3.39	2.60	1.18	.12	.28	
7	7		118	94	30	5	7	DP 7 W3
			4.65	3.70	1.18	.20	.28	
8	8		144	120	30	5	7	DP 8 W3
			5.67	4.72	1.18	.20	.28	

Alternative materials and surface finishings are available upon request. Consult STAUFF for further information.

## Hexagon Head Bolt

### Type AS (for Use with Cover Plate DP)



Hexagon Head Bolt AS (according to DIN 931 / 933 or ANSI / ASME B18.2.1.)

Dimensions applicable only when used with Cover Plate DP

### Order Codes

#### Hexagon Head Bolt

\*AS\*3\*U\*W3

\* Type of bolt Hexagon Head Bolt (according to DIN 931 / 933 or ANSI / ASME B18.2.1.) **AS**\* STAUFF Group **3**\* Thread code Unified coarse (UNC) thread **U**  
Metric ISO thread **M**\* Material code Carbon Steel, zinc/nickel-plated **W3**Stainless Steel V2A **W4**

1.4301 / 1.4305 (AISI 304 / 303)

Stainless Steel V4A **W5**

1.4401 / 1.4571 (AISI 316 / 316 Ti)

Group	STAUFF	DIN	Dimensions (mm/in)		Order Codes (Standard Options)
			Thread	G x L	
1	0		M6 x 30		AS 1/1A M W3
			1/4-20 UNC x 1-1/4		AS 1/1A U W3
1A	1		M6 x 30		AS 1/1A M W3
			1/4-20 UNC x 1-1/4		AS 1/1A U W3
2	2		M6 x 35		AS 2/1D M W3
			1/4-20 UNC x 1-3/8		AS 2/1D U W3
3	3		M6 x 40		AS 3 M W3
			1/4-20 UNC x 1-1/2		AS 3 U W3
4	4		M6 x 45		AS 4 M W3
			1/4-20 UNC x 1-7/8		AS 4 U W3
5	5		M6 x 60		AS 5 M W3
			1/4-20 UNC x 2-3/8		AS 5 U W3
6	6		M6 x 70		AS 6 M W3
			1/4-20 UNC x 2-3/4		AS 6 U W3
7	7		M6 x 100		AS 7 M W3
			1/4-20 UNC x 4		AS 7 U W3
8	8		M6 x 125		AS 8 M W3
			1/4-20 UNC x 4-7/8		AS 8 U W3

Hexagon Head Bolts, type AS 2/1D are also suitable for Twin Series, STAUFF Group 1D.