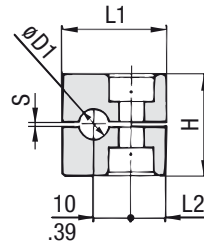
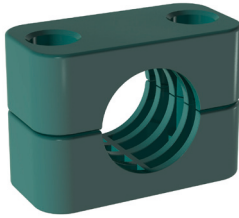
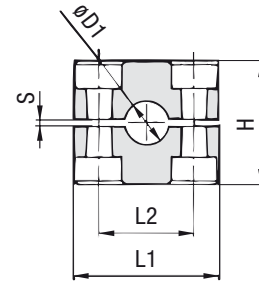


Clamp Body - Profiled Design

Profiled Inside Surface with Tension Clearance



STAUFF Group 1



STAUFF Group 1A to 8

Order Codes

Clamp Body

Clamp Body, STAUFF Group 1A

*1*06*PP

*1*06A*PP

One clamp body is consisting of two clamp halves.

* STAUFF Group

1

* Exact outside diameter Ø D1 (mm)

06

* Material code (see below)

PP

Standard Materials



Polypropylene

Colour: Green
Material code: **PP**



Polyamide

Colour: Black
Material code: **PA**



Thermoplastic Elastomer (87 Shore-A)

Colour: Black
Material code: **SA**



Aluminium

Colour: Self-Colour
Material code: **AL**

See page A88 for material properties and technical information.

Special Materials

Please consult STAUFF for further details on fire-proof clamp body materials, tested and approved according to several international fire-protection standards.

See page A89 for material properties and technical information.

Product Features

- Proven, tested and trusted product in various markets
- Recommended for the safe installation of rigid pipes and tubes
- Available for all commonly used pipe and tube outside diameters
- Environmental protection due to vibration/noise reducing design
- Excellent weathering resistance, even under extreme conditions

Group	STAUFF	DIN	Outside Diameter		Nominal Bore		Order Codes (2 Clamp Halves) (** = Material)	Dimensions (mm/in)					
			Ø D1 (mm)	(in)	Pipe (in)	Copper Tube (in)		L1	L2	H	S min.	Width	
1		0	6				106 **	28	1.10	.37	1.06	.02	1.18
			6,4				106,4 **						
			8	5/16			108 **						
			9,5	3/8		1/4	109,5 **						
			10		1/8		110 **						
			12			112 **							
1A		1	6				106A **	37	1.46	.79	1.06	.02	1.18
			6,4	1/4			106,4A **						
			8	5/16			108A **						
			9,5	3/8		1/4	109,5A **						
			10		1/8		110A **						
			12			112A **							
2		2	12,7	1/2		3/8	212,7 **	42	1.65	1.02	1.30	.02	1.18
			13,5			1/4	213,5 **						
			14				214 **						
			15				215 **						
			16	5/8		1/2	216 **						
			17,2		3/8	217,2 **							
			18			218 **							
3		3	19	3/4			319 **	50	1.97	1.30	1.42	.02	1.18
			20				320 **						
			21,3		1/2		321,3 **						
			22			3/4	322 **						
			25				325 **						
			25,4	1		325,4 **							
			26,9		3/4	426,9 **							
4		4	28				428 **	59	2.32	1.57	1.65	.02	1.18
			28,6			1	428,6 **						
			30				430 **						
			32				432 **						
5		5	32	1-1/4			532 **	71	2.80	2.05	2.28	.03	1.18
			33,7			1	533,7 **						
			35			1-1/4	535 **						
			38	1-1/2			538 **						
			40				540 **						
			41,3		1-1/2	541,3 **							
			42		1-1/4	542 **							
6		6	44,5	1-3/4			644,5 **	86	3.39	2.60	2.60	.03	1.18
			48,3			1-1/2	648,3 **						
			50,8	2			650,8 **						
			54			2	654 **						
7		7	57,2	2-1/4			757,2 **	121	4.76	3.70	3.66	.03	1.18
			60,3			2	760,3 **						
			63,5	2-1/2			763,5 **						
			70	2-3/4			770 **						
			73		2-1/2 (ANSI B 36-10)		773 **						
			76,1	3	2-1/2 (DIN EN 10220)	776,1 **							
8		8	88,9		3		888,9 **	147	5.79	4.72	4.65	.03	1.18
			102	4	3-1/2		8102L **						

Additional outside diameters are available upon request. Please consult STAUFF for further information.