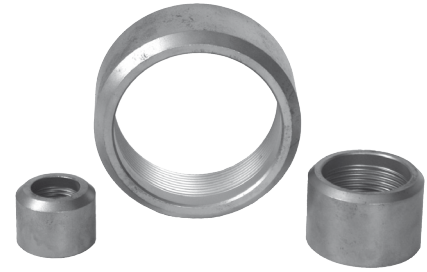
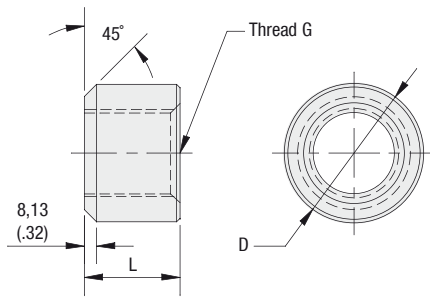


SAE Half Coupling Weld Adaptor Type SWF



Order Code and Dimensions

Order Code	Thread G	Dimensions (mm/in)	
		ØD	L
SWF - 06	9/16-18 UNF	22	17,7
		.87	.70
SWF - 08	3/4-16 UNF	28,5	21,6
		1.12	.85
SWF - 10	7/8-14 UNF	34,9	24,1
		1.37	.95
SWF - 12	1-1/16-12 UNF	37,9	24,1
		1.49	.95
SWF - 16	1-5/16-12 UNF	41,2	27,9
		1.62	1.10
SWF - 20	1-5/8-12 UNF	62,9	27,9
		2.48	1.10
SWF - 24	1-7/8-12 UNF	63,5	27,9
		2.50	1.10
SWF - 32	2-1/2-12 UNF	76,2	30,4
		3.00	1.20

Characteristics

Used for a leak-free weld installation of breathers and breather adaptors with SAE O-ring thread

Features

- Equipped with female SAE O-ring thread as per SAE J514
- Designed for minimum weld distortion
- Pilot minimised installation setup
- Labor and time saving

Consult STAUFF for custom adaptors.

Materials

- Weld Flange made of Forged Steel

Consult STAUFF for alternative materials.