

## Pressure Gauge (Analog) - Type SPG



Pressure Gauge (Analog) Type SPG (Stem Mounting)



Pressure Gauge (Analog) Type SPG (Panel Mounting)

### Product Description

#### Area of Application

- Mechanical pressure measurement

#### Features

- Suitable for hydraulic oil and gaseous media compatible with copper based alloys
- Available in nominal sizes 63 and 100 mm / 2.5 and 4 in
- Thread form: for BSP (G1/4 and G1/2), NPT (1/4 NPT and 1/2 NPT), SAE (7/16–20 UNF)
- Stainless Steel (1.4301) housing
- Acrylic sight glass
- Glycerine filled
- Standard dual scales with pressure indication in bar and PSI
- U-bolt or flange mounting kit on request
- Bezel type: crimped

Note: Please consult STAUFF before you use SPG with other media.

#### Options

- 316 Stainless Steel connector wetted parts
- Protective rubber cap
- Additional scale readings including private label
- U-bolt and flange mounting kits are available separately as spare parts
- Other diameters upon request (40 mm, 50 mm, 150 mm)

#### Technical Data

- Pressure gauge according to EN 837-1
- Subject to technical modifications

#### Accuracies

SPG-063: ± 2/1/2% of span (ASME B40.100 Grade A)  
 SPG-100: 1% of span (ASME B40.100 Grade 1A)

#### Permissible Temperatures

- Ambient: -20 °C ... +60 °C / -4 °F ... +140 °F
- Media: max. +60 °C / max. +140 °F

#### Protection Ratings

- IP 65: for all manometer SPG 100 and SPG 063 > 16 bar / 232 PSI  
 IP 65 protection rating: Dust tight and protected against water jets for all manometer SPG 063 ≤ 16 bar / 232 PSI due to pressure compensation opening
- IP 54: IP 54 protection rating: Dust protected and protected against splashing water

### Order Codes

<b>SPG</b>	<b>063</b>	-	<b>00030</b>	-	<b>05</b>	-	<b>P</b>	-	<b>N04</b>	-	<b>U</b>	-	<b> </b>
①	②		③		④		⑤		⑥		⑦		⑧

#### ① Series and Type

Stainless Steel Pressure Gauge **SPG**

#### ② Size

63 mm, with G1/4, 1/4 NPT **063**  
 or 7/16–20 UNF connection  
 100 mm, with G1/2 or 1/2 NPT **100**

#### ③ Pressure Ranges

-1,02 ... 0 bar / -30 inHg ... 0 PSI	<b>30HG30</b>
-1,02 ... 2,07 bar / -30 inHg ... 30 PSI	<b>03030</b>
0 ... 2,07 bar / 0 ... 30 PSI	<b>00030</b>
0 ... 4,14 bar / 0 ... 60 PSI	<b>00060</b>
0 ... 6,89 bar / 0 ... 100 PSI	<b>00100</b>
0 ... 11,03 bar / 0 ... 160 PSI	<b>00160</b>
0 ... 13,79 bar / 0 ... 200 PSI	<b>00200</b>
0 ... 20,68 bar / 0 ... 300 PSI	<b>00300</b>
0 ... 34,74 bar / 0 ... 500 PSI	<b>00500</b>
0 ... 41,37 bar / 0 ... 600 PSI	<b>00600</b>
0 ... 68,95 bar / 0 ... 1000 PSI	<b>01000</b>
0 ... 103,42 bar / 0 ... 1500 PSI	<b>01500</b>
0 ... 137,90 bar / 0 ... 2000 PSI	<b>02000</b>
0 ... 206,84 bar / 0 ... 3000 PSI	<b>03000</b>
0 ... 275,79 bar / 0 ... 4000 PSI	<b>04000</b>
0 ... 344,74 bar / 0 ... 5000 PSI	<b>05000</b>
0 ... 413,69 bar / 0 ... 6000 PSI	<b>06000</b>
0 ... 517,11 bar / 0 ... 7500 PSI	<b>07500</b>
0 ... 689,48 bar / 0 ... 10000 PSI	<b>10000</b>

Note: Others on request. Information always refer to the pressure setting of the outside scale.

#### ④ Styles of Scales

bar / PSI (bar outside/PSI inside - standard option)	<b>01</b>
bar	<b>02</b>
PSI	<b>03</b>
PSI / bar (PSI outside/ bar inside)	<b>05</b>
kPa / PSI (kPa outside/ PSI inside)	<b>10</b>

Note: Others on request.

#### ⑤ Adaption

Stem mounting	<b>S</b>
Panel mounting	<b>P</b>

#### ⑥ Process Connection

G1/4 (only SPG 063)	<b>B04</b>
G1/2 (only SPG 100)	<b>B08</b>
1/4 NPT (only SPG 063)	<b>N04</b>
1/2 NPT (only SPG 100)	<b>N08</b>
7/16–20 UNF (only SPG 063)	<b>U04</b>

Note: Others on request.

#### ⑦ Accessories

No accessory	<b>(none)</b>
U-bolt assembly	<b>U</b>
Front flange assembly (for panel mount only)	<b>F</b>
Rear flange assembly	<b>R</b>
U-bolt and front flange assembly (for panel mount only)	<b>UF</b>
Silicone filled	<b>S</b>

#### ⑦ Accessories (for Stem Mount only)

Protective rubber cap	<b>G</b>
-----------------------	----------

#### ⑧ Connection Material & Wetted Parts

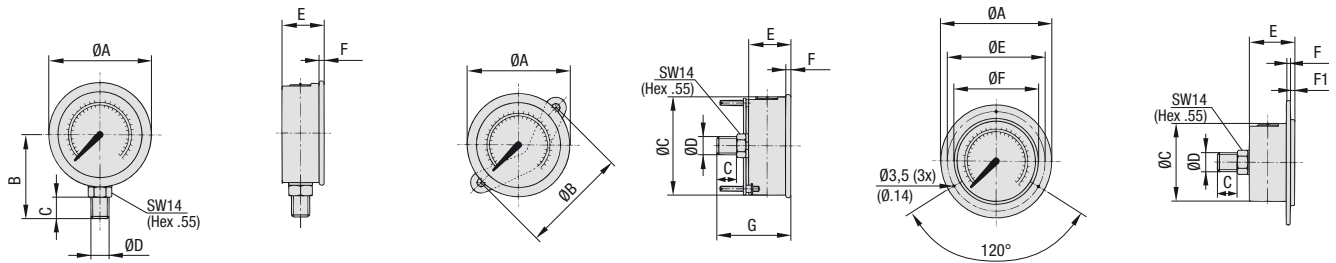
Brass connection and copper alloy wetted parts	<b>(none)</b>
316 Stainless Steel connection and wetted parts	<b>W5</b>

#### Spare Parts

Rubber boot, black	<b>SPG 063-RBB</b>
U-bolt kit	<b>SPG 063-U</b>
Front flange kit	<b>SPG 063-F</b>
U-bolt kit	<b>SPG 100-U</b>
Front flange kit	<b>SPG 100-F</b>

For further information on this product, please see page B34, STAUFF Test section.

## Pressure Gauge (Analog) ▪ Type SPG



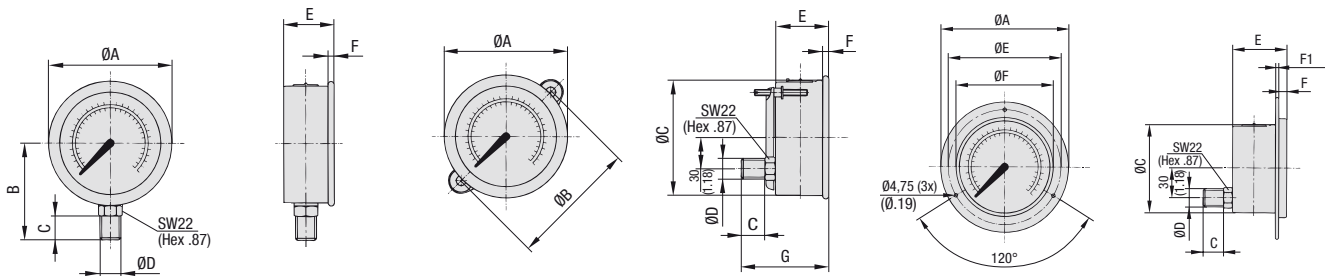
SPG 063 ... S ...

SPG 063 ... P ... U

SPG 063 ... P ... F

## Dimensions SPG 063

Version Pressure Gauge	Dimension (mm/in)											
	ØA	ØB	ØC	ØD	ØE	ØF	B	C	E	F	F1	G
SPG-063	69	-	-	G1/4	-	-	54	15	32	6,5	-	-
	2.72	-	-	1/4 NPT	-	-	2.13	.59	1.26	.26	-	-
				7/16-20 UNF								
SPG-063 ... U	69	72	62	G1/4	-	-	-	15	32	6,5	-	56
	2.72	2.83	2.44	1/4 NPT	-	-	-	.59	1.26	.26	-	2.20
				7/16-20 UNF								
SPG-063 ... F	85	-	62	G1/4	75	68	-	15	32	2	2	-
	3.35	-	2.44	1/4 NPT	2.95	2.68	-	.59	1.26	.008	.008	-
				7/16-20 UNF								



SPG 100 ... S ...

SPG 100 ... P ... U

SPG 100 ... P ... F

## Dimensions SPG 100

Version Pressure Gauge	Dimension (mm/in)											
	ØA	ØB	ØC	ØD	ØE	ØF	B	C	E	F	F1	G
SPG-100	107	-	-	G1/2	-	-	87	23	48	8	-	-
	4.21	-	-	1/2 NPT	-	-	3.43	.91	1.89	.31	-	-
SPG-100 ... U	107	107	100	G1/2	-	-	-	23	48	8	-	81,5
	4.21	4.21	3.94	1/2 NPT	-	-	-	.91	1.89	.31	-	3.21
SPG-100 ... F	132	-	100	G1/2	116	107	-	23	48	8	1,25	-
	5.20	-	3.94	1/2 NPT	4.57	4.21	-	.91	1.89	.31	.05	-

\* FS = Full Scale  
Dimensional drawings: All dimensions in mm (in).