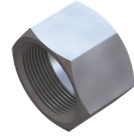
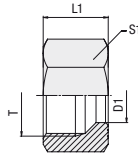


## Union Nut Type FI-M ▪ Series LL / L / S



Series	Tube OD	PN	Dimensions			Weight [kg] ca. per 100	Ordering Codes
	[mm] D1		[bar]	[mm] Thread T	L1		
LL	4	100	M 8 x 1	11	10	0,4	FI-M-04LL-W3
	6	100	M 10 x 1	11,5	12	0,5	FI-M-06LL-W3
	8	100	M 12 x 1	12	14	0,7	FI-M-08LL-W3
	10	100	M 14 x 1	12,5	17	1,1	FI-M-10LL-W3
	12	100	M 16 x 1	13	19	1,3	FI-M-12LL-W3
L	6	500	M 12 x 1,5	14,5	14	0,9	FI-M-06L-W3
	8	500	M 14 x 1,5	14,5	17	1,4	FI-M-08L-W3
	10	500	M 16 x 1,5	15,5	19	1,7	FI-M-10L-W3
	12	400	M 18 x 1,5	15,5	22	2,4	FI-M-12L-W3
	15	400	M 22 x 1,5	17	27	4,1	FI-M-15L-W3
	18	400	M 26 x 1,5	18	32	6,0	FI-M-18L-W3
	22	250	M 30 x 2	20	36	8,0	FI-M-22L-W3
	28	250	M 36 x 2	22	41	14,2	FI-M-28L-W3
	35	250	M 45 x 2	25	50	19,8	FI-M-35L-W3
	42	250	M 52 x 2	25	60	22,0	FI-M-42L-W3
S	6	800	M 14 x 1,5	16,5	17	1,7	FI-M-06S-W3
	8	800	M 16 x 1,5	16,5	19	2,0	FI-M-08S-W3
	10	800	M 18 x 1,5	17,5	22	3,0	FI-M-10S-W3
	12	630	M 20 x 1,5	17,5	24	3,4	FI-M-12S-W3
	14	630	M 22 x 1,5	20,5	27	5,2	FI-M-14S-W3
	16	630	M 24 x 1,5	20,5	30	6,5	FI-M-16S-W3
	20	400	M 30 x 2	24	36	10,1	FI-M-20S-W3
	25	400	M 36 x 2	27	46	19,8	FI-M-25S-W3
	30	400	M 42 x 2	29	50	21,6	FI-M-30S-W3
38	400	M52x2	32,5	60	31,4	FI-M-38S-W3	

