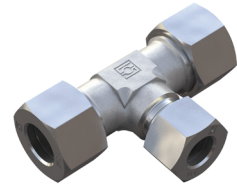
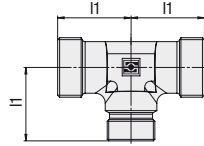
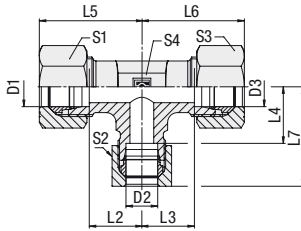


Tee Reducer
 Type FI-T • Series L


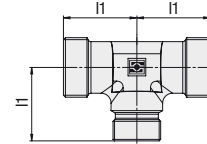
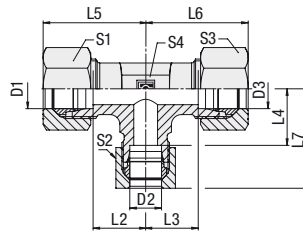
Series	Tube OD			PN [bar]	Dimensions [mm]										Weight [kg] ca. per 100 ²	Ordering Codes		
	D1	D2	D3		I1	L2	L3	L4	L5 ¹	L6 ¹	L7 ¹	S1	S2	S3		S4	with cutting rings & union nuts	Fitting body only
L	6	8	6	500	21	14	14	14	29	29	29	14	17	14	12	7,8	FI-T-06/08/06L-W3-MS	FI-T-06/08/06L-W3
	6	10	6	500	22	15	15	15	30	30	30	14	19	14	14	9,2	FI-T-06/10/06L-W3-MS	FI-T-06/10/06L-W3
	8	6	8	500	21	14	14	14	29	29	29	17	14	17	12	8,4	FI-T-08/06/08L-W3-MS	FI-T-08/06/08L-W3
	8	10	8	500	22	15	15	15	30	30	30	17	19	17	14	10,2	FI-T-08/10/08L-W3-MS	FI-T-08/10/08L-W3
	8	12	8	400	24	17	17	17	32	32	32	17	22	17	17	12,8	FI-T-08/12/08L-W3-MS	FI-T-08/12/08L-W3
	10	6	10	500	22	15	15	15	30	30	30	19	14	19	14	9,9	FI-T-10/06/10L-W3-MS	FI-T-10/06/10L-W3
	10	8	10	500	22	15	15	15	30	30	30	19	17	19	14	10,5	FI-T-10/08/10L-W3-MS	FI-T-10/08/10L-W3
	10	10	6	500	22	15	15	15	30	30	30	19	19	14	14	9,9	FI-T-10/10/06L-W3-MS	FI-T-10/10/06L-W3
	10	15	10	400	28	21	21	21	36	36	36	19	27	19	19	20,0	FI-T-10/15/10L-W3-MS	FI-T-10/15/10L-W3
	12	6	12	400	24	17	17	17	32	32	32	22	14	22	17	13,2	FI-T-12/06/12L-W3-MS	FI-T-12/06/12L-W3
	12	8	8	400	24	17	17	17	32	32	32	22	17	17	17	12,6	FI-T-12/08/08L-W3-MS	FI-T-12/08/08L-W3
	12	8	12	400	24	17	17	17	32	32	32	22	17	22	17	13,8	FI-T-12/08/12L-W3-MS	FI-T-12/08/12L-W3
	12	10	10	400	24	17	17	17	32	32	32	22	19	19	17	13,7	FI-T-12/10/10L-W3-MS	FI-T-12/10/10L-W3
	12	10	12	400	24	17	17	17	32	32	32	22	19	22	17	14,1	FI-T-12/10/12L-W3-MS	FI-T-12/10/12L-W3
	12	12	8	400	24	17	17	17	32	32	32	22	22	17	17	14,0	FI-T-12/12/08L-W3-MS	FI-T-12/12/08L-W3
	12	12	10	400	24	17	17	17	32	32	32	22	22	19	17	14,4	FI-T-12/12/10L-W3-MS	FI-T-12/12/10L-W3
	12	15	12	400	28	21	21	21	36	36	36	22	27	22	19	21,3	FI-T-12/15/12L-W3-MS	FI-T-12/15/12L-W3
	12	18	12	400	31	24	23,5	24	39	40	39	22	32	22	24	29,6	FI-T-12/18/12L-W3-MS	FI-T-12/18/12L-W3
	15	6	15	400	28	21	21	21	36	36	36	27	14	27	19	21,7	FI-T-15/06/15L-W3-MS	FI-T-15/06/15L-W3
	15	10	15	400	28	21	21	21	36	36	36	27	19	27	19	22,6	FI-T-15/10/15L-W3-MS	FI-T-15/10/15L-W3
15	12	12	400	28	21	21	21	36	36	36	27	22	22	19	21,3	FI-T-15/12/12L-W3-MS	FI-T-15/12/12L-W3	
15	12	15	400	28	21	21	21	36	36	36	27	22	27	19	23,3	FI-T-15/12/15L-W3-MS	FI-T-15/12/15L-W3	
15	15	12	400	28	21	21	21	36	36	36	27	27	22	19	23,3	FI-T-15/15/12L-W3-MS	FI-T-15/15/12L-W3	
15	18	15	400	31	24	23,5	24	39	40	39	27	32	27	24	32,9	FI-T-15/18/15L-W3-MS	FI-T-15/18/15L-W3	
18	10	10	400	31	23,5	24	24	40	39	39	32	19	19	24	32,0	FI-T-18/10/10L-W3-MS	FI-T-18/10/10L-W3	
18	10	18	400	31	23,5	24	23,5	40	39	40	32	19	32	24	31,9	FI-T-18/10/18L-W3-MS	FI-T-18/10/18L-W3	
18	12	18	400	31	23,5	24	23,5	40	39	40	32	22	32	24	32,7	FI-T-18/12/18L-W3-MS	FI-T-18/12/18L-W3	
18	15	18	400	31	23,5	24	23,5	40	39	40	32	27	32	24	34,7	FI-T-18/15/18L-W3-MS	FI-T-18/15/18L-W3	
18	18	10	400	31	23,5	23,5	24	40	40	39	32	32	19	24	32,0	FI-T-18/18/10L-W3-MS	FI-T-18/18/10L-W3	

¹ Approximate dimension with union nuts tightened.

² Weight including cutting rings and union nuts.


Also available from STAUFF, your single source manufacturer and supplier of pipework equipment and hydraulic components:
Original STAUFF Pipe and Tube Clamps according to DIN 3015 for outside diameters from 6 mm to 450 mm

Tee Reducer
Type FI-T • Series L / S



Sequence of connections in the ordering code for tee reducers:

Series	Tube OD [mm]			PN [bar]	Dimensions [mm]										Weight [kg] ca. per 100 ²	Ordering Codes		
	D1	D2	D3		I1	L2	L3	L4	L5 ¹	L6 ¹	L7 ¹	S1	S2	S3		S4	Fitting body supplied	Fitting body only
L	22	10	22	250	35	27,5	28	27,5	44	43	44	36	19	36	27	44,4	FI-T-22/10/22L-W3-MS	FI-T-22/10/22L-W3
	22	12	22	250	35	27,5	28	27,5	44	43	44	36	22	36	27	42,4	FI-T-22/12/22L-W3-MS	FI-T-22/12/22L-W3
	22	15	15	250	35	27,5	28	28	44	43	43	36	27	27	27	44,1	FI-T-22/15/15L-W3-MS	FI-T-22/15/15L-W3
	22	15	22	250	35	27,5	28	27,5	44	43	44	36	27	36	27	44,3	FI-T-22/15/22L-W3-MS	FI-T-22/15/22L-W3
	22	18	18	250	35	27,5	27,5	27,5	44	44	44	36	32	32	27	44,9	FI-T-22/18/18L-W3-MS	FI-T-22/18/18L-W3
	22	18	22	250	35	27,5	27,5	27,5	44	44	44	36	32	36	27	46,5	FI-T-22/18/22L-W3-MS	FI-T-22/18/22L-W3
	22	22	15	250	35	27,5	27,5	28	44	44	43	36	36	27	27	46,4	FI-T-22/22/15L-W3-MS	FI-T-22/22/15L-W3
	22	22	18	250	35	27,5	27,5	27,5	44	44	44	36	36	32	27	49,6	FI-T-22/22/18L-W3-MS	FI-T-22/22/18L-W3
	28	10	28	250	38	30,5	31	30,5	47	46	47	41	19	41	36	69,0	FI-T-28/10/28L-W3-MS	FI-T-28/10/28L-W3
	28	12	28	250	38	30,5	31	30,5	47	46	47	41	22	41	36	69,7	FI-T-28/12/28L-W3-MS	FI-T-28/12/28L-W3
	28	15	28	250	38	30,5	31	30,5	47	46	47	41	27	41	36	73,5	FI-T-28/15/28L-W3-MS	FI-T-28/15/28L-W3
	28	18	28	250	38	30,5	30,5	30,5	47	47	47	41	32	41	36	76,5	FI-T-28/18/28L-W3-MS	FI-T-28/18/28L-W3
	28	22	22	250	38	30,5	30,5	30,5	47	47	47	41	36	36	36	68,6	FI-T-28/22/22L-W3-MS	FI-T-28/22/22L-W3
	28	22	28	250	38	30,5	30,5	30,5	47	47	47	41	36	41	36	74,6	FI-T-28/22/28L-W3-MS	FI-T-28/22/28L-W3
	35	18	35	250	45	34,5	37,5	34,5	56	54	56	50	32	50	41	107,5	FI-T-35/18/35L-W3-MS	FI-T-35/18/35L-W3
	35	22	35	250	45	34,5	37,5	34,5	56	54	56	50	36	50	41	105,4	FI-T-35/22/35L-W3-MS	FI-T-35/22/35L-W3
35	28	35	250	45	34,5	37,5	34,5	56	54	56	50	41	50	41	118,0	FI-T-35/28/35L-W3-MS	FI-T-35/28/35L-W3	
42	22	42	250	51	40	43,5	40	63	60	63	60	36	60	50	141,1	FI-T-42/22/42L-W3-MS	FI-T-42/22/42L-W3	
42	28	42	250	51	40	43,5	40	63	60	63	60	41	60	50	164,8	FI-T-42/28/42L-W3-MS	FI-T-42/28/42L-W3	
42	35	42	250	51	40	40,5	40	63	62	63	60	50	60	50	149,1	FI-T-42/35/42L-W3-MS	FI-T-42/35/42L-W3	
S	16	8	16	630	33	24,5	26	24,5	43	41	43	30	19	30	24	36,8	FI-T-16/08/16S-W3-MS	FI-T-16/08/16S-W3
	16	10	16	630	33	24,5	25,5	24,5	43	42	43	30	22	30	24	38,0	FI-T-16/10/16S-W3-MS	FI-T-16/10/16S-W3
	16	12	16	630	33	24,5	25,5	24,5	43	42	43	30	24	30	24	38,6	FI-T-16/12/16S-W3-MS	FI-T-16/12/16S-W3
	20	10	20	400	37	26,5	29,5	26,5	48	46	48	36	22	36	27	44,4	FI-T-20/10/20S-W3-MS	FI-T-20/10/20S-W3
	20	16	20	400	37	26,5	28,5	26,5	48	47	48	36	30	36	27	57,6	FI-T-20/16/20S-W3-MS	FI-T-20/16/20S-W3
	25	16	25	400	42	30	33,5	30	54	52	54	46	30	46	36	98,8	FI-T-25/16/25S-W3-MS	FI-T-25/16/25S-W3
	25	20	25	400	42	30	31,5	30	54	53	54	46	36	46	36	102,6	FI-T-25/20/25S-W3-MS	FI-T-25/20/25S-W3
	25	30	25	400	49	37	35,5	37	61	62	61	46	50	46	41	147,1	FI-T-25/30/25S-W3-MS	FI-T-25/30/25S-W3
	30	20	30	400	49	35,5	38,5	35,5	62	48	62	50	36	50	41	133,4	FI-T-30/20/30S-W3-MS	FI-T-30/20/30S-W3
	38	25	38	400	57	41	45	41	72	69	72	60	46	60	50	223,9	FI-T-38/25/38S-W3-MS	FI-T-38/25/38S-W3
38	30	38	400	57	41	43,5	41	72	70	72	60	50	60	50	206,7	FI-T-38/30/38S-W3-MS	FI-T-38/30/38S-W3	

¹ Approximate dimension with union nuts tightened.

² Weight including cutting rings and union nuts.



Also available from STAUFF, your single source manufacturer and supplier of pipework equipment and hydraulic components: Complete range of **SAE Flanges and Components** in accordance with SAE J518 C and ISO 6162-1/2 (Standard and High Pressure Series)