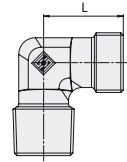
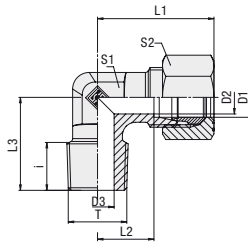


Male Stud Elbow
Type FI-WE-...-Rk • Series LL / L / S



Whitworth Taper Pipe Thread (BSPT)

Series	Tube OD [mm] D1	PN [bar]	Dimensions [mm]										Weight [kg] ca. per 100 ²	Ordering Codes	
			Thread T	D2	D3	i	L	L1 ¹	L2	L3	S1	S2		Fitting body supplied with cutting ring & union nut	Fitting body only
LL	4	100	R 1/8 keg.	3	3	8	15	21	11	17	9	10	1,7	FI-WE-04LLRk-W3-MS	FI-WE-04LLRk-W3
	6	100	R 1/8 keg.	4,5	4,5	8	15	21	9,5	17	9	12	1,8	FI-WE-06LLRk-W3-MS	FI-WE-06LLRk-W3
	8	100	R 1/8 keg.	6	6	8	17	23	11,5	20	12	14	2,5	FI-WE-08LLRk-W3-MS	FI-WE-08LLRk-W3
	10	100	R 1/4 keg.	8	7	12	21,5	27,5	16	26	14	14	4,7	FI-WE-10LLR1/4k-W3-MS	FI-WE-10LLR1/4k-W3
	12	100	R 1/4 keg.	10	7	9,9	22	28	16	23	14	17	6,0	FI-WE-12LLR1/4k-W3-MS	FI-WE-12LLR1/4k-W3
L	6	315	R 1/8 keg.	4	4	8	19	27	12	20	12	14	3,2	FI-WE-06LRk-W3-MS	FI-WE-06LRk-W3
	6	315	R 1/4 keg.	4	6	12	21	29	14	25,5	12	14	4,4	FI-WE-06LR1/4k-W3-MS	FI-WE-06LR1/4k-W3
	8	315	R 1/8 keg.	6	4	8	21	29	14	26	12	17	4,4	FI-WE-08LR1/8k-W3-MS	FI-WE-08LR1/8k-W3
	8	315	R 1/4 keg.	6	6	12	21	29	14	26	12	17	4,9	FI-WE-08LRk-W3-MS	FI-WE-08LRk-W3
	8	315	R 3/8 keg.	6	9	14	24	32	17	28	14	17	6,3	FI-WE-08LR3/8k-W3-MS	FI-WE-08LR3/8k-W3
	10	315	R 1/4 keg.	8	7	13	22	30	15	27	14	19	5,9	FI-WE-10LRk-W3-MS	FI-WE-10LRk-W3
	10	315	R 3/8 keg.	8	8	12,5	22	30	15	28	14	19	6,6	FI-WE-10LR3/8k-W3-MS	FI-WE-10LR3/8k-W3
	12	315	R 1/4 keg.	10	7	14,3	24	32	17	27	17	22	7,6	FI-WE-12LR1/4k-W3-MS	FI-WE-12LR1/4k-W3
	12	315	R 3/8 keg.	10	9	13	24	32	17	28,5	17	22	8,2	FI-WE-12LRk-W3-MS	FI-WE-12LRk-W3
	12	315	R 1/2 keg.	10	10	14	28	36	21	34	19	22	13,1	FI-WE-12LR1/2k-W3-MS	FI-WE-12LR1/2k-W3
	15	315	R 3/8 keg.	12	9	14	28	36	21	34	19	27	13,5	FI-WE-15LR3/8k-W3-MS	FI-WE-15LR3/8k-W3
	15	315	R 1/2 keg.	12	12	16	28	36	21	34	19	27	14,1	FI-WE-15LRk-W3-MS	FI-WE-15LRk-W3
	18	315	R 1/2 keg.	15	14	17,5	31	40	23,5	36	24	32	18,4	FI-WE-18LRk-W3-MS	FI-WE-18LRk-W3
	22	160	R 3/4 keg.	19	18	11	35	44	28,5	42,5	27	36	24,0	FI-WE-22LRk-W3-MS	FI-WE-22LRk-W3
S	6	630	R 1/4 keg.	4	4	12	23	31	16	26	12	17	5,8	FI-WE-06SRk-W3-MS	FI-WE-06SRk-W3
	8	630	R 1/4 keg.	5	5	13	24	32	17	27	14	19	7,1	FI-WE-08SRk-W3-MS	FI-WE-08SRk-W3
	10	630	R 1/4 keg.	7	5	13	25	34	17,5	28	17	22	9,4	FI-WE-10SR1/4k-W3-MS	FI-WE-10SR1/4k-W3
	10	630	R 3/8 keg.	7	7	13	25	34	17,5	28	17	22	9,9	FI-WE-10SRk-W3-MS	FI-WE-10SRk-W3
	12	630	R 3/8 keg.	8	7	12	29	38	21,5	28	17	24	11,7	FI-WE-12SRk-W3-MS	FI-WE-12SRk-W3
	12	630	R 1/2 keg.	8	10	14	30	39	22,5	32	19	24	14,8	FI-WE-12SR1/2k-W3-MS	FI-WE-12SR1/2k-W3
	14	630	R 1/2 keg.	10	10	14	30	40	22	32	19	27	16,7	FI-WE-14SRk-W3-MS	FI-WE-14SRk-W3
	16	400	R 1/2 keg.	12	12	14	34	44	25,5	32	24	30	20,9	FI-WE-16SRk-W3-MS	FI-WE-16SRk-W3
	16	400	R 3/4 keg.	12	12	14	34	44	25,5	32	24	30	30,8	FI-WE-16SR3/4k-W3-MS	FI-WE-16SR3/4k-W3
	20	400	R 1/2 keg.	16	10	14	37	48	26,5	42	27	36	43,1	FI-WE-20SR1/2k-W3-MS	FI-WE-20SR1/2k-W3
20	400	R 3/4 keg.	16	16	17	37	48	26,5	42	27	36	40,4	FI-WE-20SRk-W3-MS	FI-WE-20SRk-W3	

¹ Approximate dimension with nut tightened.
² Weight including cutting ring and union nut.

Male stud according to DIN 3852-2 (Form C)
Port according to DIN 3852-2 (Form Z)

Suitable liquid / plastic sealant required.



Also available from STAUFF, your single source manufacturer and supplier of pipework equipment and hydraulic components:
Pressure Filters SFZ for sandwich plate mounting with operating pressures up to 315 bar