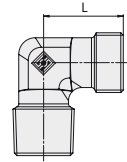
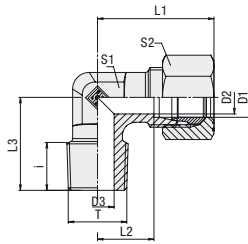


Male Stud Elbow

Type FI-WE-...-N • Series LL / L



NPT Thread

Series	Tube OD [mm] D1	PN [bar]	Dimensions [mm]											Torque [N·m] ca. Thread T	Weight [kg] ca. per 100 ²	Ordering Codes	
			Thread T	D2	D3	i	L	L1 ¹	L2	L3	S1	S2	Fitting body supplied with cutting ring & union nut			Fitting body only	
LL	4	100	1/8 NPT	3	4	9,9	15	21	11	15,6	11	10	15	1,8	FI-WE-04LL1/8N-W3-MS	FI-WE-04LL1/8N-W3	
	6	100	1/8 NPT	4,5	4,5	8	15	21	9,5	17	9	12	15	1,7	FI-WE-06LL1/8N-W3-MS	FI-WE-06LL1/8N-W3	
	8	100	1/8 NPT	6	6	10	17	23	11,5	20	12	14	15	2,5	FI-WE-08LL1/8N-W3-MS	FI-WE-08LL1/8N-W3	
L	6	315	1/8 NPT	4	5	8	19	27	11,5	20	12	14	15	3,2	FI-WE-06L1/8N-W3-MS	FI-WE-06L1/8N-W3	
	6	315	1/4 NPT	4	7	10	21	29	14	26	14	14	35	4,0	FI-WE-06L1/4N-W3-MS	FI-WE-06L1/4N-W3	
	6	315	3/8 NPT	4	8	10,5	25	33	18	28	17	14	55	7,1	FI-WE-06L3/8N-W3-MS	FI-WE-06L3/8N-W3	
	8	315	1/8 NPT	6	4	7	21	29	14	26	12	17	15	4,1	FI-WE-08L1/8N-W3-MS	FI-WE-08L1/8N-W3	
	8	315	1/4 NPT	6	6	11,4	21	29	14	26	12	17	35	4,9	FI-WE-08L1/4N-W3-MS	FI-WE-08L1/4N-W3	
	10	315	1/4 NPT	8	7	13	22	30	15	27	14	19	35	5,7	FI-WE-10L1/4N-W3-MS	FI-WE-10L1/4N-W3	
	10	315	3/8 NPT	8	8	10,5	24	32	17	28	17	19	55	7,9	FI-WE-10L3/8N-W3-MS	FI-WE-10L3/8N-W3	
	12	315	1/4 NPT	10	7	13	24	32	17	28	17	22	35	7,7	FI-WE-12L1/4N-W3-MS	FI-WE-12L1/4N-W3	
	12	315	3/8 NPT	10	8	10,5	24	32	17	28	17	22	55	8,5	FI-WE-12L3/8N-W3-MS	FI-WE-12L3/8N-W3	
	12	315	1/2 NPT	10	11	14	28	36	21	34	19	22	110	12,7	FI-WE-12L1/2N-W3-MS	FI-WE-12L1/2N-W3	
	15	315	1/2 NPT	12	14	14	28	39	21	34	19	27	110	13,1	FI-WE-15L1/2N-W3-MS	FI-WE-15L1/2N-W3	
	18	315	1/2 NPT	15	12	14	31	40	23,5	36	24	32	110	19,8	FI-WE-18L1/2N-W3-MS	FI-WE-18L1/2N-W3	
	22	160	3/4 NPT	19	16	14	35	44	27,5	42	27	36	175	28,4	FI-WE-22L3/4N-W3-MS	FI-WE-22L3/4N-W3	
	28	160	1 NPT	24	21	17,5	38	47	30,5	48	36	41	265	49,4	FI-WE-28L1N-W3-MS	FI-WE-28L1N-W3	
	35	160	1 1/4 NPT	30	28	18	48	59	34,5	54	41	50	315	74,3	FI-WE-35L1-1/4N-W3-MS	FI-WE-35L1-1/4N-W3	
42	160	1 1/2 NPT	36	34	18,5	54	66	43	61	50	60	385	100,3	FI-WE-42L1-1/2N-W3-MS	FI-WE-42L1-1/2N-W3		

¹Approximate dimension with nut tightened.

²Weight including cutting ring and union nut.

Male stud according to ANSI/ASME B1.20.1-1983

Port according to ANSI/ASME B1.20.1-1983

Torque recommendations for Steel mating material.

Suitable liquid / plastic sealant required.



Also available from STAUFF, your single source manufacturer and supplier of pipework equipment and hydraulic components:
Custom-designed clamping systems and solutions according to customer's specifications or based on STAUFF developments