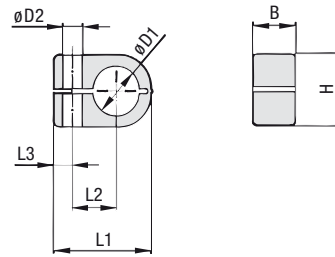
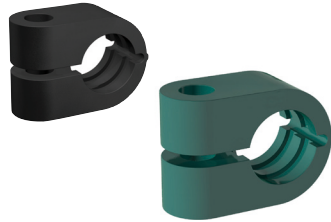


Clamp Body - Single Design



Order Codes

Clamp Body ***LN*1*06*PP**

- * Light Series: Clamp Body / Single Design **LN**
- * STAUFF Group **1**
- * Exact outside diameter Ø D1 (mm) **06**
- * Material code (see below) **PP**

Standard Materials

Polypropylene
 Colour: Green
 Material code: **PP**

Polyamide
 Colour: Black
 Material code: **PA**

See page A88 for material properties and technical information.

Alternative materials are available upon request.
 Please consult STAUFF for further information.

Applications

- Pneumatics, Instrumentation and Automotive Technology, Machine Tool Industry, Lubrication, Mechanical Engineering

Group	Outside Diameter Pipe / Tube / Hose Ø D1		Nominal Bore Pipe (in)	Order Codes (1 Clamp Body) (** = Material)	Dimensions (mm/in)					
	(mm)	(in)			L1	L2	L3	B	H	Ø D2
1	6			LN 106 **	22	9	7	14,5	13,5	6,8
	6,4	1/4		LN 106,4 **	.87	.35	.28	.57	.53	.27
	8			LN 108 **						
2	8			LN 208 **						
	9,5	3/8		LN 209,5 **	27	11	7	14,5	18,5	6,8
	10		1/8	LN 210 **	1.06	.43	.28	.57	.59	.27
	12			LN 212 **						
	12,7	1/2		LN 212,7 **						
3	10		1/8	LN 310 **						
	12			LN 312 **						
	12,7	1/2		LN 312,7 **	33	15	7	14,5	23,5	6,8
	13,5		1/4	LN 313,5 **	1.30	.59	.28	.57	.93	.27
	14			LN 314 **						
	15			LN 315 **						
4	16	5/8		LN 316 **						
	14			LN 414 **						
	15			LN 415 **						
	16	5/8		LN 416 **						
	17,2		3/8	LN 417,2 **	40	19	7	14,5	30,5	6,8
	18			LN 418 **	1.57	.75	.28	.57	1.20	.27
	19	3/4		LN 419 **						
	20			LN 420 **						
21,3		1/2	LN 421,3 **							
	22			LN 422 **						

Additional outside diameters are available upon request. Please consult STAUFF for further information.