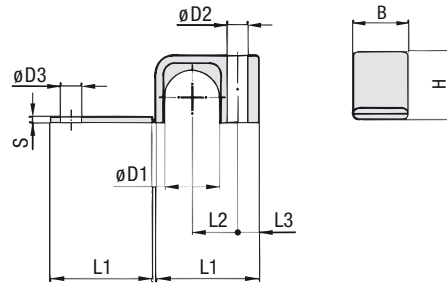
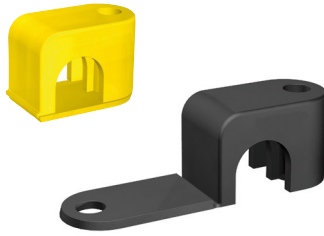


Clamp Body - Single Design



Order Codes

Clamp Body

*LB*1*03,2*PP

- * Light Series: Clamp Body / Single Design **LB**
- * STAUFF Group **1**
- * Exact outside diameter Ø D1 (mm) **03,2**
- * Material code (see below) **PP**

Standard Materials



Polypropylene
Colour: Black
Material code: **PP**



Polyamide
Colour: Yellow
Material code: **PA**

See page A88 for material properties and technical information.

Alternative materials are available upon request.
Please consult STAUFF for further information.

Applications

- Pneumatics, Instrumentation and Automotive Technology, Machine Tool Industry, Lubrication, Mechanical Engineering

Group	Outside Diameter Pipe / Tube / Hose Ø D1		Nominal Bore Pipe (in)	Order Codes (1 Clamp Body) (** = Material)	Dimensions (mm/m)									
	(mm)	(in)			L1	L2	L3	B	H	S	Ø D2	Ø D3		
1	3,2	1/8		LB 103,2 **										
	6			LB 106 **	22	9	6,5	12	10,5	2	6,8	7		
	6,4	1/4		LB 106,4 **	.87	.35	.26	.47	.41	.08	.27	.28		
	8			LB 108 **										
2	9,5	3/8		LB 209,5 **										
	10		1/8	LB 210 **	27	11	7	16	15	2	6,8	7		
	11,1			LB 211,1 **	1.06	.43	.28	.63	.59	.08	.27	.28		
3	12			LB 212 **										
	12,7	1/2		LB 312,7 **										
	13,5		1/4	LB 313,5 **										
	14			LB 314 **	34	15	7	20	22,5	2	6,8	7		
	15			LB 315 **	1.34	.59	.28	.79	.89	.08	.27	.28		
	16	5/8		LB 316 **										
4	17,2		3/8	LB 317,2 **										
	18			LB 318 **										
	19	3/4		LB 419 **										
	20			LB 420 **										
	21,3		1/2	LB 421,3 **	42	19	7	20	30	2	6,8	7		
	22			LB 422 **	1.65	.75	.28	.79	1.18	.08	.27	.28		
	25			LB 425 **										
25,4	1		LB 425,4 **											

Additional outside diameters are available upon request. Please consult STAUFF for further information.