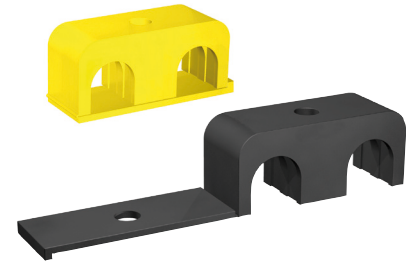
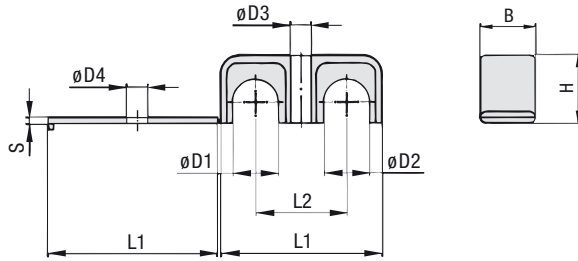


## Clamp Body - Twin Design



Group	Outside Diameters Pipe / Tube / Hose Ø D1 / Ø D2		Nominal Bore Pipe (in)	Order Codes (1 Clamp Body) (** = Material)	Dimensions (mm / in)								
	(mm)	(in)			L1	L2	B	H	S	Ø D3	Ø D4		
1	3,2	1/8		LBG 103,2/03,2 **									
	6			LBG 106/06 **	31	18	12	10,5	2	6,8	7		
	6,4	1/4		LBG 106,4/06,4 **	1.22	.71	.47	.41	.08	.27	.28		
	8			LBG 108/08 **									
2	9,5	3/8		LBG 209,5/09,5 **									
	10		1/8	LBG 210/10 **	39	22	16	15	2	6,8	7		
	11,1			LBG 211,1/11,1 **	1.54	.87	.63	.59	.08	.27	.28		
	12			LBG 212/12 **									
3	12,7	1/2		LBG 312,7/12,7 **									
	13,5		1/4	LBG 313,5/13,5 **									
	14			LBG 314/14 **	53	30	20	22,5	2	6,8	7		
	15			LBG 315/15 **	2.09	1.18	.79	.89	.08	.27	.28		
	16	5/8		LBG 316/16 **									
	17,2		3/8	LBG 317,2/17,2 **									
4	18			LBG 318/18 **									
	19	3/4		LBG 419/19 **									
	20			LBG 420/20 **									
	21,3		1/2	LBG 421,3/21,3 **	70	38	20	30	2	6,8	7		
	22			LBG 422/22 **	2.76	1.50	.79	1.18	.08	.27	.28		
	25,4	1		LBG 425,4/25,4 **									

## Order Codes

Clamp Body \*LBG\*1\*03,2/03,2\*PP

\* Light Series: Clamp Body / Twin Design with identical diameters **LBG**  
 Clamp Body / Twin Design with different diameters **LBU**

\* STAUFF Group **1**

\* Exact outside diameters Ø D1 / Ø D2 (mm) **03,2/03,2**

\* Material code (see below) **PP**

## Standard Materials

 **Polypropylene**  
 Colour: Black  
 Material code: **PP**

 **Polyamide**  
 Colour: Yellow  
 Material code: **PA**

See page A88 for material properties and technical information.

Alternative materials are available upon request.  
 Please consult STAUFF for further information.

## Applications

- Pneumatics, Instrumentation and Automotive Technology, Machine Tool Industry, Lubrication, Mechanical Engineering

Additional outside diameters and combinations of different outside diameters (Clamp Body, Type LBU) are available upon request.  
 Please consult STAUFF for further information.