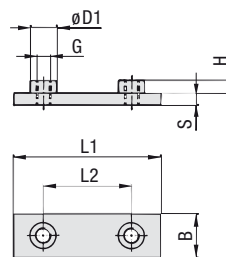
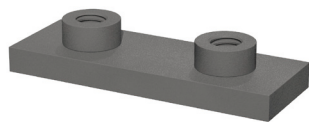


**Weld Plate for Single Clamps  
Type SPAL**



**Order Codes**

**Weld Plate**

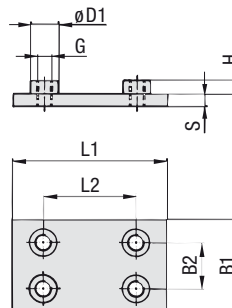
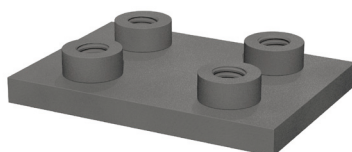
**\*SPAL\*3S\*U\*W2**

- \* Weld Plate for Single Clamps **SPAL**
- \* STAUFF Group **3S**
- \* Thread code Unified coarse (UNC) thread **U**  
Metric ISO thread **M**
- \* Material code Carbon Steel, untreated **W1**  
Carbon Steel, phosphated **W2**  
Carbon Steel, zinc/nickel-plated **W3**  
Stainless Steel V2A **W4**  
1.4301 / 1.4305 (AISI 304 / 303) **W4**  
Stainless Steel V4A **W5**  
1.4401 / 1.4571 (AISI 316 / 316 Ti) **W5**

Group	Dimensions (mm/in)	Order Codes
STAUFF	DIN	L1 L2 B S H Thread G ØD1 (Standard Options)
3S	1	74 33 30 8 8 M10 18 SPAL 3S M W2
		2.91 1.30 1.18 .31 .31 3/8-16 UNC .71 SPAL 3S U W2
4S	2	86 45 30 8 8 M10 18 SPAL 4S M W2
		3.39 1.77 1.18 .31 .31 3/8-16 UNC .71 SPAL 4S U W2
5S	3	100 60 30 8 8 M10 18 SPAL 5S M W2
		3.94 2.36 1.18 .31 .31 3/8-16 UNC .71 SPAL 5S U W2
6S	4	140 90 45 10 8 M12 20 SPAL 6S M W2
		5.51 3.54 1.77 .39 .31 7/16-14 UNC .78 SPAL 6S U W2
7S	5	180 122 60 10 12 M16 24 SPAL 7S M W2
		7.09 4.80 2.36 .39 .47 5/8-11 UNC .94 SPAL 7S U W2
8S	6	226 168 80 15 18 M20 30 SPAL 8S M W1
		8.90 6.61 3.15 .59 .71 3/4-10 UNC 1.18 SPAL 8S U W1
9S	7	270 205 90 15 21 M24 35 SPAL 9S M W1
		10.63 8.07 3.54 .59 .83 7/8-9 UNC 1.38 SPAL 9S U W1
10S	8	340 265 120 25 21 M30 45 SPAL 10S M W1
		13.39 10.43 4.72 .98 .83 1-1/8-7 UNC 1.77 SPAL 10S U W1
11S	9	520 395 160 30 38 M30 50 SPAL 11S M W1
		20.47 15.55 6.30 1.18 1.50 1-1/4-7 UNC 1.97 SPAL 11S U W1
12S	10	680 534 180 30 38 M30 50 SPAL 12S M W1
		27.16 21.02 7.09 1.18 1.50 1-1/4-7 UNC 1.97 SPAL 12S U W1

All threaded parts are available with Metric ISO thread or unified coarse (UNC) thread according to dimension table. Alternative materials and surface finishings are available upon request. Consult STAUFF for further information.

**Weld Plate for Double Clamps  
Type SPAS**



**Order Codes**

**Weld Plate**

**\*SPAS\*3S\*U\*W2**

- \* Weld Plate for Double Clamps **SPAS**
- \* STAUFF Group **3S**
- \* Thread code Unified coarse (UNC) thread **U**  
Metric ISO thread **M**
- \* Material code Carbon Steel, untreated **W1**  
Carbon Steel, phosphated **W2**  
Carbon Steel, zinc/nickel-plated **W3**  
Stainless Steel V2A **W4**  
1.4301 / 1.4305 (AISI 304 / 303) **W4**  
Stainless Steel V4A **W5**  
1.4401 / 1.4571 (AISI 316 / 316 Ti) **W5**

Group	Dimensions (mm/in)	Order Codes
STAUFF	DIN	L1 L2 B1 B2 S H Thread G ØD1 (Standard Options)
3S	1	74 33 60 30,5 8 8 M10 18 SPAS 3S M W2
		2.91 1.30 2.36 1.20 .31 .31 3/8-16 UNC .71 SPAS 3S U W2
4S	2	86 45 60 30,5 8 8 M10 18 SPAS 4S M W2
		3.39 1.77 2.36 1.20 .31 .31 3/8-16 UNC .71 SPAS 4S U W2
5S	3	100 60 60 30,5 8 8 M10 18 SPAS 5S M W2
		3.94 2.36 2.36 1.20 .31 .31 3/8-16 UNC .71 SPAS 5S U W2
6S	4	140 90 90 46 10 8 M12 20 SPAS 6S M W2
		5.51 3.54 3.54 1.81 .39 .31 7/16-14 UNC .78 SPAS 6S U W2
7S	5	180 122 120 61 10 12 M16 24 SPAS 7S M W2
		7.09 4.80 4.72 2.40 .39 .47 5/8-11 UNC .94 SPAS 7S U W2
8S	6	226 168 160 81 15 18 M20 30 SPAS 8S M W1
		8.90 6.61 6.61 3.19 .59 .71 3/4-10 UNC 1.18 SPAS 8S U W1
9S	7	270 205 180 91 15 21 M24 35 SPAS 9S M W1
		10.63 8.07 7.09 3.58 .59 .83 7/8-9 UNC 1.38 SPAS 9S U W1
10S	8	340 265 240 121 25 21 M30 45 SPAS 10S M W1
		13.39 10.43 9.45 4.78 .98 .83 1-1/8-7 UNC 1.77 SPAS 10S U W1
11S	9	520 395 324 166 30 38 M30 50 SPAS 11S M W1
		20.47 15.55 12.76 6.54 1.18 1.50 1-1/4-7 UNC 1.97 SPAS 11S U W1
12S	10	680 534 364 186 30 38 M30 50 SPAS 12S M W1
		27.16 21.02 14.33 7.32 1.18 1.50 1-1/4-7 UNC 1.97 SPAS 12S U W1

All threaded parts are available with Metric ISO thread or unified coarse (UNC) thread according to dimension table. Alternative materials and surface finishings are available upon request. Consult STAUFF for further information.