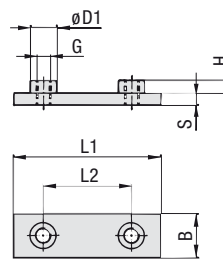
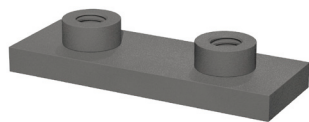


**Weld Plate for Single Clamps
Type SPAL**



Order Codes

Weld Plate

***SPAL*3S*U*W2**

* Weld Plate for Single Clamps

SPAL

* STAUFF Group

3S

* Thread code

Unified coarse (UNC) thread
Metric ISO thread

U

M

* Material code

Carbon Steel, untreated
Carbon Steel, phosphated
Carbon Steel, zinc/nickel-plated

Stainless Steel V2A
1.4301 / 1.4305 (AISI 304 / 303)
Stainless Steel V4A
1.4401 / 1.4571 (AISI 316 / 316 Ti)

W1

W2

W3

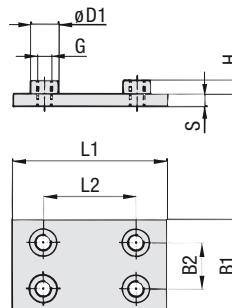
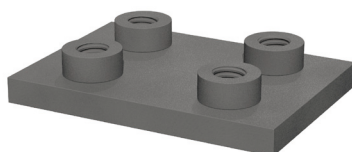
W4

W5

Group	Dimensions (mm/in)	Order Codes							
STAUFF	DIN	(Standard Options)							
	L1	L2	B	S	H	Thread G	ØD1		
3S	1	74	33	30	8	8	M10	18	SPAL 3S M W2
		2.91	1.30	1.18	.31	.31	3/8-16 UNC	.71	SPAL 3S U W2
4S	2	86	45	30	8	8	M10	18	SPAL 4S M W2
		3.39	1.77	1.18	.31	.31	3/8-16 UNC	.71	SPAL 4S U W2
5S	3	100	60	30	8	8	M10	18	SPAL 5S M W2
		3.94	2.36	1.18	.31	.31	3/8-16 UNC	.71	SPAL 5S U W2
6S	4	140	90	45	10	8	M12	20	SPAL 6S M W2
		5.51	3.54	1.77	.39	.31	7/16-14 UNC	.78	SPAL 6S U W2
7S	5	180	122	60	10	12	M16	24	SPAL 7S M W2
		7.09	4.80	2.36	.39	.47	5/8-11 UNC	.94	SPAL 7S U W2
8S	6	226	168	80	15	18	M20	30	SPAL 8S M W1
		8.90	6.61	3.15	.59	.71	3/4-10 UNC	1.18	SPAL 8S U W1
9S	7	270	205	90	15	21	M24	35	SPAL 9S M W1
		10.63	8.07	3.54	.59	.83	7/8-9 UNC	1.38	SPAL 9S U W1
10S	8	340	265	120	25	21	M30	45	SPAL 10S M W1
		13.39	10.43	4.72	.98	.83	1-1/8-7 UNC	1.77	SPAL 10S U W1
11S	9	520	395	160	30	38	M30	50	SPAL 11S M W1
		20.47	15.55	6.30	1.18	1.50	1-1/4-7 UNC	1.97	SPAL 11S U W1
12S	10	680	534	180	30	38	M30	50	SPAL 12S M W1
		27.16	21.02	7.09	1.18	1.50	1-1/4-7 UNC	1.97	SPAL 12S U W1

All threaded parts are available with Metric ISO thread or unified coarse (UNC) thread according to dimension table. Alternative materials and surface finishings are available upon request. Consult STAUFF for further information.

**Weld Plate for Double Clamps
Type SPAS**



Order Codes

Weld Plate

***SPAS*3S*U*W2**

* Weld Plate for Double Clamps

SPAS

* STAUFF Group

3S

* Thread code

Unified coarse (UNC) thread
Metric ISO thread

U

M

* Material code

Carbon Steel, untreated
Carbon Steel, phosphated
Carbon Steel, zinc/nickel-plated

Stainless Steel V2A
1.4301 / 1.4305 (AISI 304 / 303)
Stainless Steel V4A
1.4401 / 1.4571 (AISI 316 / 316 Ti)

W1

W2

W3

W4

W5

Group	Dimensions (mm/in)	Order Codes								
STAUFF	DIN	(Standard Options)								
	L1	L2	B1	B2	S	H	Thread G	ØD1		
3S	1	74	33	60	30,5	8	8	M10	18	SPAS 3S M W2
		2.91	1.30	2.36	1.20	.31	.31	3/8-16 UNC	.71	SPAS 3S U W2
4S	2	86	45	60	30,5	8	8	M10	18	SPAS 4S M W2
		3.39	1.77	2.36	1.20	.31	.31	3/8-16 UNC	.71	SPAS 4S U W2
5S	3	100	60	60	30,5	8	8	M10	18	SPAS 5S M W2
		3.94	2.36	2.36	1.20	.31	.31	3/8-16 UNC	.71	SPAS 5S U W2
6S	4	140	90	90	46	10	8	M12	20	SPAS 6S M W2
		5.51	3.54	3.54	1.81	.39	.31	7/16-14 UNC	.78	SPAS 6S U W2
7S	5	180	122	120	61	10	12	M16	24	SPAS 7S M W2
		7.09	4.80	4.72	2.40	.39	.47	5/8-11 UNC	.94	SPAS 7S U W2
8S	6	226	168	160	81	15	18	M20	30	SPAS 8S M W1
		8.90	6.61	6.61	3.19	.59	.71	3/4-10 UNC	1.18	SPAS 8S U W1
9S	7	270	205	180	91	15	21	M24	35	SPAS 9S M W1
		10.63	8.07	7.09	3.58	.59	.83	7/8-9 UNC	1.38	SPAS 9S U W1
10S	8	340	265	240	121	25	21	M30	45	SPAS 10S M W1
		13.39	10.43	9.45	4.78	.98	.83	1-1/8-7 UNC	1.77	SPAS 10S U W1
11S	9	520	395	324	166	30	38	M30	50	SPAS 11S M W1
		20.47	15.55	12.76	6.54	1.18	1.50	1-1/4-7 UNC	1.97	SPAS 11S U W1
12S	10	680	534	364	186	30	38	M30	50	SPAS 12S M W1
		27.16	21.02	14.33	7.32	1.18	1.50	1-1/4-7 UNC	1.97	SPAS 12S U W1

All threaded parts are available with Metric ISO thread or unified coarse (UNC) thread according to dimension table. Alternative materials and surface finishings are available upon request. Consult STAUFF for further information.