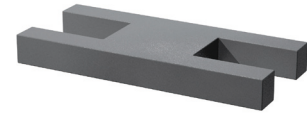
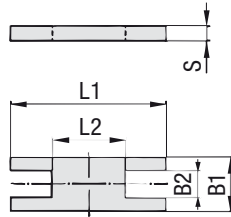


Safety Locking Plate (for Use with Stacking Bolt AF) Type SIP



Group STAUFF	DIN	Dimensions (mm/in)					Order Codes (Standard Options)
		L1	L2	B1	B2	S	
3S	1	57	13	30	15,2	8	SIP 3S W2
		2.24	.51	1.18	.60	.31	
4S	2	70	26	30	15,2	8	SIP 4S W2
		2.76	1.02	1.18	.60	.31	
5S	3	85	40	30	15,2	8	SIP 5S W2
		3.35	1.57	1.18	.60	.31	
6S	4	116	68	45	17,2	10	SIP 6S W2
		4.57	2.68	1.77	.68	.39	
7S	5	153	96	60	22	10	SIP 7S W2
		6.02	3.78	2.36	.87	.39	
8S	6	206	130	80	28	15	SIP 8S W1
		8.11	5.12	3.15	1.10	.59	
9S	7	251	166	90	31	15	SIP 9S W1
		9.88	6.54	3.54	1.22	.59	
10S	8	317	205	120	49	25	SIP 10 S W1
		12.48	8.07	4.72	1.93	.98	

Alternative materials and surface finishings are available upon request. Consult STAUFF for further information.

Order Codes

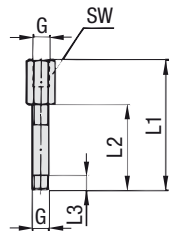
Safety Locking Plate

***SIP*3S*W2**

* Safety Locking Plate		SIP
* STAUFF Group		3S
* Material code	Carbon Steel, untreated	W1
	Carbon Steel, phosphated	W2
	Carbon Steel, zinc/nickel-plated	W3
	Stainless Steel V2A	W4
	1.4301 / 1.4305 (AISI 304 / 303)	W4
	Stainless Steel V4A	W5
	1.4401 / 1.4571 (AISI 316 / 316 Ti)	W5

Stacking Bolt

(for Use with Safety Locking Plate SIP) Type AF



Group STAUFF	DIN	Dimensions (mm/in)					Order Codes (Standard Options)
		L1	L2	L3 min.	Hex	Thread G	
3S	1	49	25	15	15	M10	AF 3S M W3*
		1.93	.98	.59	.59	3/8-16 UNC	AF 3S U W3
4S	2	65	40	15	15	M10	AF 4S M W3*
		2.56	1.57	.59	.59	3/8-16 UNC	AF 4S U W3
5S	3	77	51	15	15	M10	AF 5S M W3*
		3.03	2.01	.59	.59	3/8-16 UNC	AF 5S U W3
6S	4	110	82	18	17	M12	AF 6S M W3*
		4.33	3.23	.71	.67	7/16-14 UNC	AF 6S U W3
7S	5	144	110	24	21	M16	AF 7S M W3*
		5.67	4.33	.94	.83	5/8-11 UNC	AF 7S U W3
8S	6	200	150	30	27	M20	AF 8S M W1*
		7.87	5.91	1.18	1.06	3/4-10 UNC	AF 8S U W1
9S	7	240	180	50	30	M24	AF 9S M W1*
		9.45	7.09	1.97	1.18	7/8-9 UNC	AF 9S U W1
10S	8	331	256	62	46	M30	AF 10S M W1*
		13.03	10.08	2.44	1.81	1-1/8-7 UNC	AF 10S U W1

All threaded parts are available with Metric ISO thread or unified coarse (UNC) thread according to dimension table. Alternative materials and surface finishings are available upon request. Consult STAUFF for further information.

* Standard finishing option for markets outside North America is W2 (Carbon Steel, phosphated).

Order Codes

Stacking Bolt

***AF*3S*U*W3**

* Stacking Bolt		AF
* STAUFF Group		3S
* Thread code	Unified coarse (UNC) thread	U
	Metric ISO thread	M
* Material code	Carbon Steel, untreated	W1
	Carbon Steel, phosphated	W2
	Carbon Steel, zinc/nickel-plated	W3
	Stainless Steel V2A	W4
	1.4301 / 1.4305 (AISI 304 / 303)	W4
	Stainless Steel V4A	W5
	1.4401 / 1.4571 (AISI 316 / 316 Ti)	W5