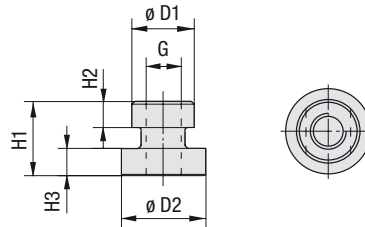


### Mounting Rail Nut

Type **GMV** (for Use with Mounting Rail STSV)



#### Order Codes

**Mounting Rail Nut** \***GMV\*3-5S\*U\*W3**

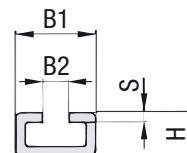
- \* Mounting Rail Nut **GMV**
- \* STAUFF Group 3S to 5S (DIN Group 1 to 3) **3-5S**  
6S (DIN Group 4) **6S**
- \* Thread code Unified coarse (UNC) thread **U**  
Metric ISO thread **M**
- \* Material code Carbon Steel, zinc/nickel-plated **W3**  
Stainless Steel V2A **W4**  
1.4301 / 1.4305 (AISI 304 / 303)  
Stainless Steel V4A **W5**  
1.4401 / 1.4571 (AISI 316 / 316 Ti)

Group	STAUFF	DIN	Dimensions (mm/in)					Thread G	Order Codes (Standard Options)
			ØD1	ØD2	H1	H2	H3		
3S		1							
4S		2	17,8 .70	24 .94	21 .83	7,6 .30	7,4 .29	M10 3/8-16 UNC	<b>GMV 3-5S M W3</b> <b>GMV 3-5S U W3</b>
5S		3							
6S		4	19,8 .78	24 .94	23 .91	8,8 .35	8,2 .32	M12 7/16-14 UNC	<b>GMV 6S M W3</b> <b>GMV 6S U W3</b>

All threaded parts are available with Metric ISO thread or unified coarse (UNC) thread according to dimension table. Alternative materials and surface finishings are available upon request. Consult STAUFF for further information.

### Mounting Rail

Type **STSV** (for Use with Mounting Rail Nut GMV)



#### Order Codes

**Mounting Rail** \***STSV\*1\*W1**

- \* Mounting Rail **STSV**
- \* Length of rail 1 m / 3.28 ft **1**  
2 m / 6.56 ft **2**  
Alternative lengths available upon request. Consult STAUFF for further information.
- \* Material code Carbon Steel, untreated **W1**  
Carbon Steel, zinc/nickel-plated **W3**  
Stainless Steel V4A **W5**  
1.4401 / 1.4571 (AISI 316 / 316 Ti)

Group	STAUFF	DIN	Dimensions (mm/in)				Order Codes (Standard Options)	
			B1	B2	H	S	Length of Rail: 1 m / 3.28 ft	Length of Rail: 2 m / 6.56 ft
3S		1						
4S		2	40	13	22	5	<b>STSV 1 W1</b>	<b>STSV 2 W1</b>
5S		3	1.57	.39	.86	.19		
6S		4						

Alternative materials and surface finishings are available upon request. Consult STAUFF for further information.