



① Type of Installation

Please select the type of installation (e.g. Weld Plates, Rail Nuts, etc.) and add the corresponding Code to position ① of the order code for your clamp assembly.

Without Installation Equipment
Code: none

Installation on Weld Plate

Weld Plate for Single Clamps
Code: **SPAL**

Weld Plate for Double Clamps
Code: **SPAS**

Elongated Weld Plate for Single Clamps
Code: **SPAL/DUEB**

Elongated Weld Plate for Double Clamps
Code: **SPAS/DUEB**

Installation on Mounting / Channel Rail

Mounting Rail Nut
Code: **GMV** (for STAUFF Group 3S to 6S only)

Channel Rail Adaptor
Code: **CRA** (for STAUFF Group 3S to 6S only)

② Group Size & Diameter

Please select the required group size and diameter and add the corresponding Code to position ② of the order code for your clamp assembly.

Group	Outside Diameter P / T / H (mm)	Availability of Clamp Body Materials & Designs			Code
		Profiled Design	Type H	Type RI	
3S (1)	6	●	●	○	3006
	6,4	●	●	○	3006,4
	8	●	●	○	3008
	9,5	●	●	○	3009,5
	10	●	●	○	3010
	12	●	●	○	3012
	12,7	●	●	○	3012,7
	13,5	●	●	○	3013,5
	14	●	●	○	3014
	15	●	●	○	3015
	16	●	●	○	3016
17,2	●	●	○	3017,2	
18	●	●	○	3018	
20	●	○	○	3020	

② Group Size & Diameter CONTINUATION

Group	Outside Diameter P / T / H (mm)	Availability of Clamp Body Materials & Designs			Code
		Profiled Design	Type H	Type RI	
4S (2)	6	○	○	●	4006
	8	○	○	●	4008
	10	○	○	●	4010
	12	○	○	●	4012
	12,7	○	○	●	4012,7
	14	○	○	●	4014
	15	○	●	●	4015
	16	○	○	●	4016
	17,2	○	○	●	4017,2
	18	○	○	●	4018
	19	●	●	●	4019
	19,8	○	●	○	4019,8
	20	●	●	○	4020
	21,3	●	●	○	4021,3
	22	●	●	○	4022
	22,1	○	●	○	4022,1
	25	●	●	○	4025
	25,1	○	●	○	4025,1
	25,4	●	●	○	4025,4
	26,9	●	●	○	4026,9
28	●	●	○	4028	
29,2	○	●	○	4029,2	
30	●	●	○	4030	
5S (3)	20	○	○	●	5020
	21,3	○	○	●	5021,3
	22	○	○	●	5022
	25	○	○	●	5025
	26,9	○	○	●	5026,9
	28	○	○	●	5028
	30	●	●	●	5030
	32	●	●	●	5032
	33,7	●	●	○	5033,7
	35	●	●	○	5035
	38	●	●	○	5038
	40	●	●	○	5040
	41,3	●	●	○	5041,3
	42	●	●	○	5042
6S (4)	32	○	○	●	6032
	33,7	○	○	●	6033,7
	35	○	○	●	6035
	37,8	○	●	○	6037,8
	38	●	●	○	6038
	38,7	○	○	●	6038,7
	40	○	○	●	6040
	42	●	●	●	6042
	44,5	●	●	○	6044,5
	45,5	○	○	●	6045,5
	48	○	○	●	6048
	48,3	●	●	○	6048,3
	48,4	○	●	○	6048,4
	50,8	●	●	○	6050,8
	51	○	○	●	6051
	53,4	○	○	●	6053,4
	54	●	○	○	6054
	54,4	○	●	○	6054,4

② Group Size & Diameter CONTINUATION

Group	Outside Diameter P / T / H (mm)	Availability of Clamp Body Materials & Designs			Code	
		Profiled Design	Type H	Type RI		
6S (4)	55	●	●	○	6055	
	56,4	○	○	●	6056,4	
	57	●	●	○	6057	
	57,2	●	●	○	6057,2	
	60,3	●	●	○	6060,3	
	63,5	●	●	○	6063,5	
	65	●	●	○	6065	
	70	●	●	○	6070	
	7S (5)	55	○	○	●	7055
		57	○	○	●	7057
60		○	○	●	7060	
60,3		●	○	○	7060,3	
63,5		○	○	●	7063,5	
65		●	○	●	7065	
70		●	○	○	7070	
72		○	○	●	7072	
73		●	○	○	7073	
75		●	○	○	7075	
8S (6)	76	○	○	●	7076	
	76,1	●	○	○	7076,1	
	80	●	○	○	7080	
	82,5	●	○	○	7082,5	
	88,9	●	○	○	7088,9	
	80	○	○	●	8080	
	88,9	●	○	●	8088,9	
	100	●	○	○	8100	
	102	●	○	●	8102	
	108	●	○	○	8108	
114	●	○	○	8114		
9S (7)	127	●	○	○	8127	
	133	●	○	○	8133	
	114	○	○	●	9114	
	127	●	○	○	9127	
	133	●	○	○	9133	
	140	●	○	●	9140	
	152	●	○	○	9152	
10S (8)	159	●	○	○	9159	
	165	●	○	○	9165	
	168	●	○	○	9168	
	150	○	○	●	10150	
	165	○	○	●	10165	
	168	●	○	○	10168	
	172	○	○	●	10172	
	177,8	●	○	○	10177,8	
11S (9)	193,7	●	○	○	10193,7	
	203	●	○	○	10203	
	216	●	○	○	10216	
	219	●	○	○	10219	
	219	●	○	○	11219	
12S (10)	273	●	○	○	11273	
	324	●	○	○	11324	
12S (10)	356	●	○	○	12356	
	406	●	○	○	12406	

● Standard Option

Additional outside diameters are available upon request. Please consult STAUFF for further information.

Please see pages A40 and A41 with detailed order examples for some of the most popular Heavy Series clamp assemblies.

③ Clamp Body Design & Material

Please select the design and material of your clamp body and add the corresponding Code to position ③ of the order code for your clamp assembly.

Please check the availability of the selected clamp body design and material according to the matrix table in ②.

Profiled Design

Polypropylene
Code: **PP**

Polyamide
Code: **PA**

Thermoplastic Elastomer (87 Shore-A)
Code: **SA** (for STAUFF Group 3S to 6S only)

Aluminium
Code: **AL**

Type H (Smooth)

Polypropylene
Code: **PPH** (for STAUFF Group 3S to 6S only)

Polyamide
Code: **PAH** (for STAUFF Group 3S to 6S only)

Thermoplastic Elastomer (87 Shore-A)
Code: **SAH** (for STAUFF Group 3S to 6S only)

Type RI (with Rubber Insert)

Polypropylene
Code: **PPR** (for STAUFF Group 4S to 10S only)

Polyamide
Code: **PAR** (for STAUFF Group 4S to 10S only)

See page A88 for material properties and technical information.

Please consult STAUFF for further details on fire-proof clamp body materials, tested and approved according to several international fire-protection standards.

④ Mounting & Fitting Combination

Please select the mounting and fitting combination (e.g. bolts, screws, cover plates, etc.) and add the corresponding Code to position ④ of the order code for your clamp assembly.

Installation with Cover Plate and Bolts

Cover Plate for Single Clamps DPAL with Hexagon Head Bolts AS
Code: **DPAL-AS**

Cover Plate for Double Clamps DPAS with Hexagon Head Bolts AS
Code: **DPAS-AS**

Cover Plate for Single Clamps DPAL with Socket Cap Screws IS*
Code: **DPAL-IS** (for STAUFF Group 3S to 6S only)

Installation with Locking Plate and Bolts

Safety Locking Plate SIP with Stacking Bolts AF
Code: **SIP-AF**

Installation with Bolts only

Socket Cap Screws IS
Code: **IS**

* Special lengths of Socket Cap Screws IS required. For exact lengths, please see details of Hexagon Head Bolt, type AS (for use with Cover Plates DPAL or DPAS) on page A35.

⑤ Thread Type

Please select the required thread type and add the corresponding Code to position ⑤ of the order code for your clamp assembly.

Unified coarse (UNC) thread
Code: **U**

Metric ISO thread
Code: **M**

All threaded parts are available with Metric ISO thread or unified coarse (UNC) thread according to dimension table.

⑥ Material & Surface Finishing

Please select the required material & surface finishing of the metal parts and add the corresponding Code to position ⑥ of the order code for your clamp assembly.

Metal parts made of Carbon Steel, untreated **W1**

Metal parts made of Carbon Steel, phosphated **W2**

Metal parts made of Carbon Steel, zinc/nickel-plated **W3**

Metal parts made of Stainless Steel V2A 1.4301 / 1.4305 (AISI 304 / 303) **W4**

Metal parts made of Stainless Steel V4A 1.4401 / 1.4571 (AISI 316 / 316 Ti) **W5**

Weld Plate made of Carbon Steel, phosphated; Other metal parts made of Carbon Steel, zinc/nickel-plated **W10**

Weld Plate and Cover Plate made of Carbon Steel, phosphated; Bolts made of Carbon Steel, untreated **W12**

Mounting Rail Nuts made of Carbon Steel, zinc/nickel-plated; Cover Plate made of Carbon Steel, phosphated; Bolts made of Carbon Steel, untreated **W13**

Weld Plate / Cover Plate made of Carbon Steel, phosphated; Bolts made of Carbon Steel, zinc/nickel-plated **W15**

Mounting Rail Nuts made of Carbon Steel, zinc/nickel-plated; Cover Plate made of Carbon Steel, phosphated; Bolts made of Carbon Steel, zinc/nickel-plated **W16**

Safety Locking Plate made of Carbon Steel, phosphated; Bolts made of Carbon Steel, zinc/nickel-plated **W17**

Safety Locking Plate made of Carbon Steel, untreated; Bolts made of Carbon Steel, phosphated **W18**

Cover Plate made of Carbon Steel, phosphated; Bolts made of Carbon Steel, untreated **W19**

Individual combinations of alternative materials and surface finishings are available upon request. Consult STAUFF for further information.

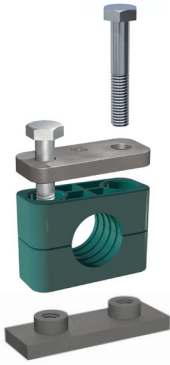
⑦ Assembling & Kitting

If required, please select an additional assembling and kitting option and add the corresponding Code to the last position of the order code for your clamp assembly.

Components supplied separately
Code: **none** (standard option)

Components assembled
Code: **#A** (special option)

Components packed in kits
Code: **#K** (special option)

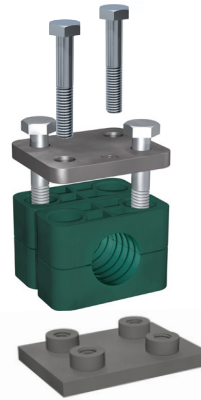


- 2x Hexagon Head Bolt**
Surface: W3
Thread: UNC
- 1x Cover Plate for Single Clamps**
Surface: W2
- 1x Clamp Body (two halves)**
STAUFF Group 3S (DIN 1)
O.D. 6 mm / .24 in
Material: Polypropylene
Profiled inside surface with tension clearance
- 1x Weld Plate for Single Clamps**
Surface: W2
Thread: UNC

Order Code

SPAL 3006 PP DPAL-AS U W15

W15 (STAUFF Group 3S to 7S) and W1 (STAUFF Group 8S to 12S) are the standard options for this type of installation.



- 4x Hexagon Head Bolt**
Surface: W3
Thread: UNC
- 1x Cover Plate for Double Clamps**
Surface: W2
- 2x Clamp Body (four halves)**
STAUFF Group 3S (DIN 1)
O.D. 6 mm / .24 in
Material: Polypropylene
Profiled inside surface with tension clearance
- 1x Weld Plate for Double Clamps**
Surface: W2
Thread: UNC

Order Code

SPAS 3006 PP DPAS-AS U W15

W15 (STAUFF Group 3S to 7S) and W1 (STAUFF Group 8S to 12S) are the standard options for this type of installation.

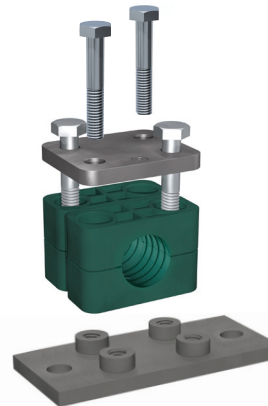


- 2x Hexagon Head Bolt**
Surface: W3
Thread: UNC
- 1x Cover Plate for Single Clamps**
Surface: W2
- 1x Clamp Body (two halves)**
STAUFF Group 3S (DIN 1)
O.D. 6 mm / .24 in
Material: Polypropylene
Profiled inside surface with tension clearance
- 1x Elongated Weld Plate for Single Clamps**
Surface: W2
Thread: UNC

Order Code

SPAL/DUEB 3006 PP DPAL-AS U W15

W15 (STAUFF Group 3S to 7S) and W1 (STAUFF Group 8S to 12S) are the standard options for this type of installation.



- 4x Hexagon Head Bolt**
Surface: W3
Thread: UNC
- 1x Cover Plate for Double Clamps**
Surface: W2
- 2x Clamp Body (four halves)**
STAUFF Group 3S (DIN 1)
O.D. 6 mm / .24 in
Material: Polypropylene
Profiled inside surface with tension clearance
- 1x Elongated Weld Plate for Double Clamps**
Surface: W2
Thread: UNC

Order Code

SPAS/DUEB 3006 PP DPAS-AS U W15

W15 (STAUFF Group 3S to 7S) and W1 (STAUFF Group 8S to 12S) are the standard options for this type of installation.

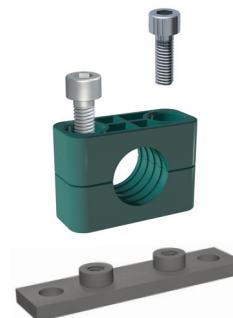


- 2x Socket Cap Screw**
Surface: W3
Thread: UNC
- 1x Clamp Body (two halves)**
STAUFF Group 3S (DIN 1)
O.D. 6 mm / .24 in
Material: Polypropylene
Profiled inside surface with tension clearance
- 1x Weld Plate for Single Clamps**
Surface: W2
Thread: UNC

Order Code

SPAL 3006 PP IS U W10

W10 is the standard option for this type of installation. Available up to STAUFF Group 6S (DIN Group 4) only.



- 2x Socket Cap Screw**
Surface: W3
Thread: UNC
- 1x Clamp Body (two halves)**
STAUFF Group 3S (DIN 1)
O.D. 6 mm / .24 in
Material: Polypropylene
Profiled inside surface with tension clearance
- 1x Elongated Weld Plate for Single Clamps**
Surface: W2
Thread: UNC

Order Code

SPAL/DUEB 3006 PP IS U W10

W10 is the standard option for this type of installation. Available up to STAUFF Group 6S (DIN Group 4) only.



- 2x **Hexagon Head Bolt**
Surface: W3
Thread: UNC
- 1x **Cover Plate for Single Clamps**
Surface: W2
- 1x **Clamp Body** (two halves)
STAUFF Group 3S (DIN 1)
O.D. 6 mm / .24 in
Material: Polypropylene
Profiled inside surface with tension clearance
- 2x **Mounting Rail Nut**
Surface: W3
Thread: UNC

Order Code (Mounting Rail STSV not included.)

GMV 3006 PP DPAL-AS U W16

W16 is the standard option for this type of installation.
Available up to STAUFF Group 6S (DIN Group 4) only.



- 2x **Socket Cap Screw**
Surface: W3
Thread: UNC
- 1x **Clamp Body** (two halves)
STAUFF Group 3S (DIN 1)
O.D. 6 mm / .24 in
Material: Polypropylene
Profiled inside surface with tension clearance
- 2x **Mounting Rail Nut**
Surface: W3
Thread: UNC

Order Code (Mounting Rail STSV not included.)

GMV 3006 PP IS U W3

W3 is the standard option for this type of installation.
Available up to STAUFF Group 6S (DIN Group 4) only.

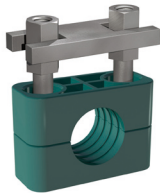


- 2x **Hexagon Head Bolt**
Surface: W3
Thread: UNC
- 1x **Cover Plate for Single Clamps**
Surface: W2
- 1x **Clamp Body** (two halves)
STAUFF Group 3S (DIN 1)
O.D. 6 mm / .24 in
Material: Polypropylene
Profiled inside surface with tension clearance

Order Code

3006 PP DPAL-AS U W15

W15 (STAUFF Group 3S to 7S) and **W1** (STAUFF Group 8S to 12S) are the standard options for this type of installation.



- 2x **Stacking Bolt**
Surface: W3
Thread: UNC
- 1x **Safety Locking Plate**
Surface: W2
- 1x **Clamp Body** (two halves)
STAUFF Group 3S (DIN 1)
O.D. 6 mm / .24 in
Material: Polypropylene
Profiled inside surface with tension clearance

Order Code

3006 PP SIP-AF M W17

W17 (STAUFF Group 3S to 7S) and **W1** (STAUFF Group 8S to 10S) are the standard options for this type of installation. Available up to STAUFF Group 10S (DIN Group 8) only.

Thread codes

All threaded parts are available with Metric ISO thread or unified coarse (UNC) thread according to dimension table.

Unified coarse (UNC) thread	U
Metric ISO thread	M

Material codes

The below listed material codes describe the materials and surface finishings of metal parts that are most relevant for Heavy Series clamp assemblies. Individual combinations of alternative materials and surface finishings are available upon request. Consult STAUFF for further information.

Metal parts made of Carbon Steel, untreated	W1
Metal parts made of Carbon Steel, phosphated	W2
Metal parts made of Carbon Steel, zinc/nickel-plated	W3
Metal parts made of Stainless Steel V2A: 1.4301 / 1.4305 (AISI 304 / 303)	W4
Metal parts made of Stainless Steel V4A: 1.4401 / 1.4571 (AISI 316 / 316 Ti)	W5
Weld Plate made of Carbon Steel, phosphated; Other metal parts made of Carbon Steel, zinc/nickel-plated	W10
Weld Plate and Cover Plate made of Carbon Steel, phosphated; Bolts made of Carbon Steel, untreated	W12
Mounting Rails Nut made of Carbon Steel, zinc/nickel-plated; Cover Plate made of Carbon Steel, phosphated; Bolts made of Carbon Steel, untreated	W13
Weld Plate and Cover Plate made of Carbon Steel, phosphated; Bolts made of Carbon Steel, zinc/nickel-plated	W15
Mounting Rail Nuts made of Carbon Steel, zinc/nickel-plated; Cover Plate made of Carbon Steel, phosphated; Bolts made of Carbon Steel, zinc/nickel-plated	W16
Safety Locking Plate made of Carbon Steel, phosphated; Bolts made of Carbon Steel, zinc/nickel-plated	W17
Safety Locking Plate made of Carbon Steel, untreated; Bolts made of Carbon Steel, phosphated	W18
Cover Plate made of Carbon Steel, phosphated; Bolts made of Carbon Steel, untreated	W19