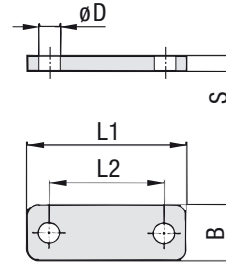


**Cover Plate for Single Clamps
Type DPAL**



Order Codes

Cover Plate

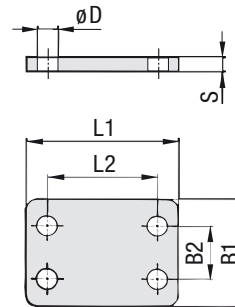
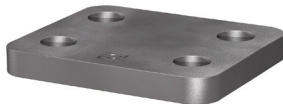
***DPAL*3S*W2**

- * Cover Plate for Single Clamps **DPAL**
- * STAUFF Group **3S**
- * Material code **W1** Carbon Steel, untreated
- W2** Carbon Steel, phosphated
- W3** Carbon Steel, zinc/nickel-plated
- W4** Stainless Steel V2A
- 1.4301 / 1.4305 (AISI 304 / 303)
- W5** Stainless Steel V4A
- 1.4401 / 1.4571 (AISI 316 / 316 Ti)

Group	STAUFF	DIN	Dimensions (mm/in)					Order Codes (Standard Options)
			L1	L2	B	S	ØD	
3S	1		55	33	30	8	11	DPAL 3S W2
			2.16	1.30	1.18	.31	.43	
4S	2		70	45	30	8	11	DPAL 4S W2
			2.76	1.77	1.18	.31	.43	
5S	3		85	60	30	8	11	DPAL 5S W2
			3.35	2.36	1.18	.31	.43	
6S	4		115	90	45	10	14	DPAL 6S W2
			4.53	3.54	1.77	.39	.55	
7S	5		152	122	60	10	19	DPAL 7S W2
			5.98	4.80	2.36	.39	.75	
8S	6		206	168	80	15	22	DPAL 8S W1
			8.11	6.61	3.15	.59	.87	
9S	7		251	205	90	15	26	DPAL 9S W1
			9.88	8.07	3.54	.59	1.02	
10S	8		320	265	120	25	35	DPAL 10S W1
			12.60	10.43	4.72	.98	1.38	
11S	9		470	395	160	30	35	DPAL 11S W1
			18.50	15.55	6.30	1.18	1.38	
12S	10		630	534	180	30	35	DPAL 12S W1
			24.80	21.02	7.09	1.18	1.38	

Alternative materials and surface finishings are available upon request. Consult STAUFF for further information.

**Cover Plate for Double Clamps
Type DPAS**



Order Codes

Cover Plate

***DPAS*3S*W2**

- * Cover Plate for Double Clamps **DPAS**
- * STAUFF Group **3S**
- * Material code **W1** Carbon Steel, untreated
- W2** Carbon Steel, phosphated
- W3** Carbon Steel, zinc/nickel-plated
- W4** Stainless Steel V2A
- 1.4301 / 1.4305 (AISI 304 / 303)
- W5** Stainless Steel V4A
- 1.4401 / 1.4571 (AISI 316 / 316 Ti)

Group	STAUFF	DIN	Dimensions (mm/in)					Order Codes (Standard Options)	
			L1	L2	B1	B2	S		ØD
3S	1		55	33	60	30,5	8	11	DPAS 3S W2
			2.16	1.30	2.36	1.20	.31	.43	
4S	2		70	45	60	30,5	8	11	DPAS 4S W2
			2.76	1.77	2.36	1.20	.31	.43	
5S	3		85	60	60	30,5	8	11	DPAS 5S W2
			3.35	2.36	2.36	1.20	.31	.43	
6S	4		115	90	90	46	10	14	DPAS 6S W2
			4.53	3.54	3.54	1.81	.39	.55	
7S	5		152	122	120	61	10	19	DPAS 7S W2
			5.98	4.80	4.72	2.40	.39	.75	
8S	6		206	168	160	81	15	22	DPAS 8S W1
			8.11	6.61	6.61	3.19	.59	.87	
9S	7		251	205	180	91	15	26	DPAS 9S W1
			9.88	8.07	7.09	3.58	.59	1.02	
10S	8		320	265	240	121	25	35	DPAS 10S W1
			12.60	10.43	9.45	4.78	.98	1.38	
11S	9		470	395	321	166	30	35	DPAS 11S W1
			18.50	15.55	12.64	6.54	1.18	1.38	
12S	10		630	534	361	186	30	35	DPAS 12S W1
			24.80	21.02	14.21	7.32	1.18	1.38	

Alternative materials and surface finishings are available upon request. Consult STAUFF for further information.