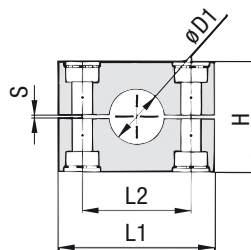
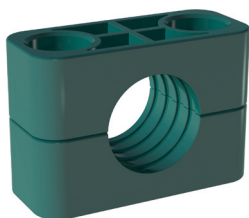


### Clamp Body - Profiled Design

Profiled Inside Surface with Tension Clearance



#### Order Codes

##### Clamp Body

**\*3\*006\*PP**

One clamp body is consisting of two clamp halves.

- \* 1<sup>st</sup> part of STAUFF Group **3**
- \* Exact outside diameter Ø D1 (mm) **006**
- \* Material code (see below) **PP**

#### Standard Materials



**Polypropylene**  
Colour: Green  
Material code: **PP**



**Polyamide**  
Colour: Black  
Material code: **PA**



**Thermoplastic Elastomer (87 Shore-A)**  
Colour: Black  
Material code: **SA**



**Aluminium**  
Colour: Self-Colour  
Material code: **AL**

See page A88 for material properties and technical information.

#### Special Materials

Please consult STAUFF for further details on fire-proof clamp body materials, tested and approved according to several international fire-protection standards.

See page A89 for material properties and technical information.

#### Product Features

- Proven, tested and trusted product in various markets
- Recommended for the safe installation of rigid pipes and tubes
- Available for all commonly used pipe and tube outside diameters
- Environmental protection due to vibration/noise reducing design
- Excellent weathering resistance, even under extreme conditions

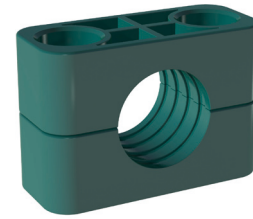
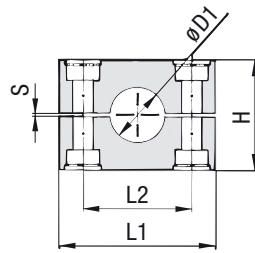
Group	STAUFF	DIN	Outside Diameter		Nominal Bore		Order Codes (2 Clamp Halves) (** = Material)	Dimensions (mm/in)							
			Pipe / Tube Ø D1 (mm)	(in)	Pipe (in)	Copper Tube (in)		L1 PP/PA/SA	L1 AL	L2	H	S min.	Width		
3S	1	6					3006 **								
		6,4	1/4				3006,4 **								
		8	5/16				3008 **								
		9,5	3/8		1/4		3009,5 **								
		10		1/8			3010 **								
		12					3012 **								
		12,7	1/2		3/8		3012,7 **	55	56	33	32	0,6	30,5		
		13,5		1/4			3013,5 **	2.16	2.20	1.30	1.26	.02	1.20		
		14					3014 **								
		15					3015 **								
		16	5/8		1/2		3016 **								
		17,2		3/8			3017,2 **								
18					3018 **										
20					3020 **										
4S	2	19	3/4			4019 **									
		20				4020 **									
		21,3		1/2		4021,3 **									
		22			3/4	4022 **	70	70	45	48	0,6	30,5			
		25				4025 **	2.76	2.76	1.77	1.89	.02	1.20			
		25,4	1			4025,4 **									
		26,9		3/4		4026,9 **									
		28				4028 **									
30				4030 **											
5S	3	30				5030 **									
		32	1-1/4			5032 **									
		33,7		1		5033,7 **									
		35			1-1/4	5035 **	85	85	60	60	0,6	30,5			
		38	1-1/2			5038 **	3.35	3.35	2.36	2.36	.02	1.20			
		40			1-1/2	5040 **									
41,3			1-1/2	5041,3 **											
42		1-1/4		5042 **											
6S	4	38	1-1/2			6038 **									
		42		0		6042 **									
		44,5	1-3/4			6044,5 **									
		48,3		1-1/2		6048,3 **									
		50,8	2			6050,8 **									
		54			2	6054 **	115	120	90	89	2	45			
		55				6055 **	4.53	4.72	3.54	3.50	.08	1.77			
		57				6057 **									
57,2	2-1/4			6057,2 **											
60,3		2		6060,3 **											
63,5	2-1/2			6063,5 **											
65				6065 **											
70	2-3/4			6070 **											

See page A27 for STAUFF Group 7S to 12S (DIN Group 5 to 10).

Additional outside diameters are available upon request. Please consult STAUFF for further information.

**Clamp Body - Profiled Design**

Profiled Inside Surface with Tension Clearance



Group	STAUFF DIN	Outside Diameter Pipe / Tube Ø D1		Nominal Bore Pipe (in)	Order Codes (2 Clamp Halves) (** = Material)	Dimensions (mm/in)					
		(mm)	(in)			L1 PP/PA	L1 AL	L2	H	S min.	Width
7S	5	60,3			7060,3 **	154 6.06	152 5.98	122 4.80	120 4.72	2 .08	60 2.36
		65			7065 **						
		70	2-3/4		7070 **						
		73		2-1/2 (ANSI B 36-10)	7073 **						
		75			7075 **						
		76,1	3	2-1/2 (DIN EN 10220)	7076,1 **						
		80			7080 **						
		82,5			7082,5 **						
		88,9	3-1/2	3	7088,9 **						
8S	6	88,9	3-1/2	3	8088,9 **	206 8.11	208 8.19	168 6.61	168 6.61	2 .08	80 3.15
		100			8100 **						
		102	4	3-1/2	8102 **						
		108			8108 **						
		114	4-1/2	4	8114 **						
		127	5		8127 **						
133			8133 **								
9S	7	127	5		9127 **	251 9.88	255 10.04	205 8.07	200 7.87	3 .12	91 3.58
		133			9133 **						
		140		5	9140 **						
		152	6		9152 **						
		159			9159 **						
		165			9165 **						
168		6	9168 **								
10S	8	168		6	10168 **	336 13.22	326 12.83	265 10.43	270 10.63	3 .12	120 4.72
		177,8			10177,8 **						
		193,7			10193,7 **						
		203	8		10203 **						
		216			10216 **						
219		8	10219 **								
11S	9	219		8	11219 **	470 18.50	470 18.50	395 15.55	410 16.14	8 .31	162 6.38
		273		10	11273 **						
		324		12	11324 **						
12S	10	356		14	12356 **	630 4.80	630 4.80	534 21.02	530 20.87	20 .79	182 7.16
		406		16	12406 **						

See page A26 for STAUFF Group 3S to 6S (DIN Group 1 to 4).

Additional outside diameters are available upon request. Please consult STAUFF for further information.

**Order Codes**
**Clamp Body**
**\*7\*060,3\*PP**

One clamp body is consisting of two clamp halves.

- \* 1<sup>st</sup> part of STAUFF Group 7
- \* Exact outside diameter Ø D1 (mm) 060,3
- \* Material code (see below) PP

**Standard Materials**

**Polypropylene**  
 Colour: Green  
 Material code: **PP**

**Polyamide**  
 Colour: Black  
 Material code: **PA**

**Aluminium**  
 Colour: Self-Colour  
 Material code: **AL**

See page A88 for material properties and technical information.

**Special Materials**

Please consult STAUFF for further details on fire-proof clamp body materials, tested and approved according to several international fire-protection standards.

See page A89 for material properties and technical information.

**Product Features**

- Proven, tested and trusted product in various markets
- Recommended for the safe installation of rigid pipes and tubes
- Available for all commonly used pipe and tube outside diameters
- Environmental protection due to vibration/noise reducing design
- Excellent weathering resistance, even under extreme conditions