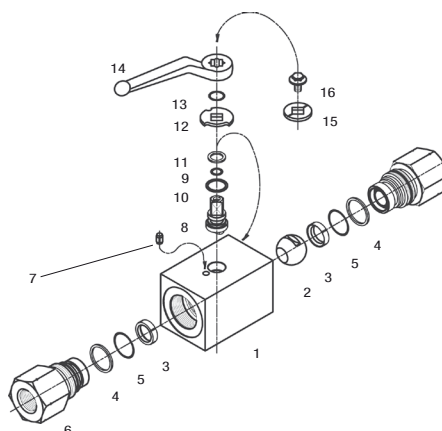
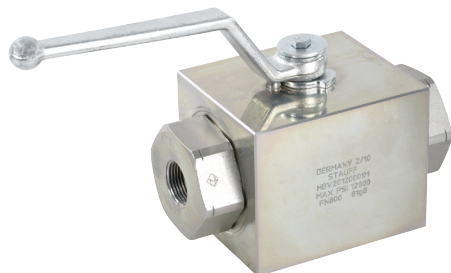


High-Pressure 800 bar / 12000 PSI Block Body Ball Valve - Type HBV



List of Components

No.	Qty.	Description
1	1	Body
2	1	Ball
3*	2	Seat
4*	2	Connector O-Ring
5*	2	Pipe Back-up Ring
6	2	Connector
7	1	Stop Pin
8	1	Stem
9*	1	Thrust Ring
10*	1	Stem O-Ring
11*	1	Pipe Back-up
12	1	Cam Plate
13	1	Snap Ring
14	1	Handle
15	1	Flow Indicator
16	1	Stem Screw

* Included in seal kit

Characteristics

Two-way high-pressure block body ball valves designed for use as on/off devices for hydraulic applications (for pressures up to 800 bar / 12000 PSI)

Standard Construction

- Block body design for in-line assembly
- Supplied with lever

Standard Materials

- Body: Carbon Steel, zinc/iron-plated
- Ball: Carbon Steel, hard chrome-plated
- Stem: Carbon Steel
- Lever: Carbon Steel
- Ball seat: Delrin® (POM)
- O-rings: FPM (Viton®)

Standard Connections Styles / Sizes

- Female NPT thread (ANSI B1.20.1) >1-11-1/2 NPT

Pressure Range

- Pressure range: up to 800 bar / 12000PSI (depending on size and material combination of the ball valve)

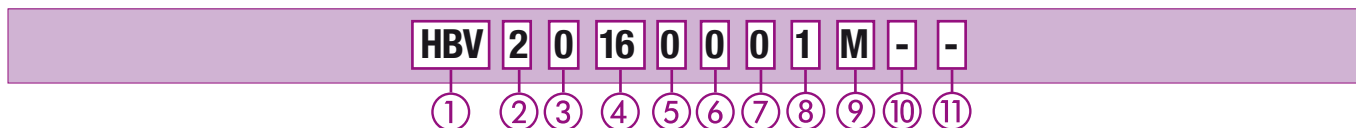
Temperature Range

- Operating temperature range: -20°C ... +100°C / -4°F ... + 212°F

Options / Accessories

- Alternative lever designs/materials (see page F98)
- Locking devices (see pages F99-F101)
- Pneumatic actuator packages (see page F102)
- Limit switches (see page F102)
- Stainless Steel body
- Stainless Steel ball and stem
- Special ball seat and O-ring materials available for lower/higher temperatures and more aggressive media
- Additional assembling threads (see page F103)
- Electrical actuators available on request. Please consult STAUFF for further information.

Order Codes



① Type

High-Pressure Block Body Ball Valve **HBV**

② Number of Ports

Two Ports (Two-Way Ball Valve) **2**

③ Connection Style

Female NPT Thread (ANSI B1.20.1) **0**

Please consult STAUFF for alternative connection styles.

④ Connection Size

STAUFF Size (according to dimension table) for connection styles G, 0, 1 and B:

04	06	08	12	16
----	----	----	----	----

Please consult STAUFF for alternative connection sizes.

⑤ Body Material / Surface Finishing

Carbon Steel, zinc/iron-plated **0**
 Stainless Steel V4A (AISI 316Ti) **1**

Alternative materials / surface finishings are available upon request. Consult STAUFF for further information.

⑥ Ball / Stem Material

Ball: Carbon Steel, hard chrome-plated **0**
 Stem: Carbon Steel **0**
 Ball / Stem: Stainless Steel V4A (AISI 316Ti) **1**

Alternative materials / surface finishings are available upon request. Consult STAUFF for further information.

⑦ Ball Seat Material

Delrin® (POM) **0**

Alternative materials are available upon request. Consult STAUFF for further information.

⑧ O-Ring Material

NBR (Buna-N®) **0**
 FPM (Viton®) **1**

Alternative materials are available upon request. Consult STAUFF for further information.

⑨ Manufacturing Code

Manufacturing code for all connection styles **M**

⑩ Lever Options

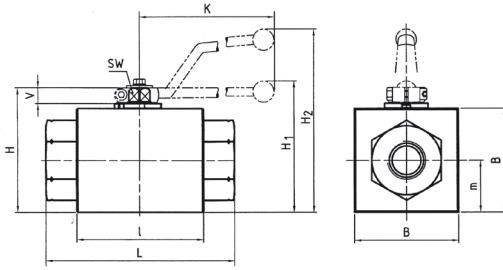
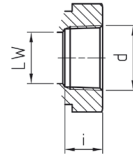
Supplied with standard lever (according to table) **-**
 Supplied without lever **-0**

Alternative levers can be ordered separately. Please see page F98 for further information.

⑪ Accessories / Options

Supplied without accessories **-**
 Supplied with Locking Device LD1 **-LD1**
 Supplied with Locking Device LD4 (standard) **-LD4**
 Supplied with Double-Acting Pneumatic Actuator (Please add size **) **-EDA****
 Supplied with Single-Acting Pneumatic Actuator (Please add size **) **-ESA****
 Supplied with Limit Switch in open position **-LS-0**
 Supplied with Limit Switch in closed position **-LS-C**
 Supplied with Limit Switch in open and closed position **-LS-OC**

Please see page F99 for further information.

**High-Pressure 800 bar / 12000 PSI Block Body Ball Valve - Type HBV
Female NPT Thread (ANSI B1.20.1)**

**Female NPT Thread
(ANSI B1.20.1)**


When ordering the standard option as indicated in the table below, the following materials will be supplied:

- Body, ball and stem: Carbon Steel
- Lever: Zinc
- Ball seat: Delrin® (POM)
- O-rings: FPM (Viton®)

STAUFF Size	Thread Size d	Nominal Size DN	Dimensions (mm/in)											Nom. Pressure (bar/psi)	Weight (kg/lbs)	Order Codes (Standard Option)	
			LW	L	I	B	H	m	V	SW	K	i	H1				H2
04	1/4-18 NPT	6	6	130	76	50	64	25	11	9	115	13,7	/	99	800	1,92	HBV20040001M
			.39	8.44	4.94	3.25	4.16	1.62	.71	.58	7.47	0.89		6.43	12000	4.22	
06	3/8-18 NPT	10	13	130	76	50	64	25	11	9	115	13,5	/	99	800	1,85	HBV20060001M
			.84	8.44	4.94	3.25	4.16	1.62	.71	.58	7.47	0.88		6.43	12000	4.07	
08	1/2-14 NPT	13	13	130	76	50	64	25	11	9	115	17	/	99	800	1,79	HBV20080001M
			.84	8.44	4.94	3.25	4.16	1.62	.71	.58	7.47	1.10		6.43	12000	3.93	
12	3/4-14 NPT	20	20	161	111	90	108	45	14	14	200	18,3	112	/	800	7,83	HBV20120001M
			1.30	10.45	7.21	5.84	7.01	2.92	.91	.91	12.99	1.19	7.27		12000	17.23	
16	1-11-1/2 NPT	25	25	164	111	90	108	45	14	14	200	21,6	112	/	800	7,68	HBV20160001M
			1.62	10.65	7.21	5.84	7.01	2.92	.91	.91	12.99	1.40	7.27		12000	16.90	

Please note the pressure ratings of the tube connections.