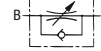
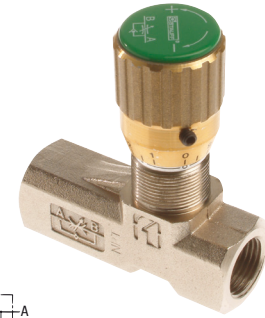
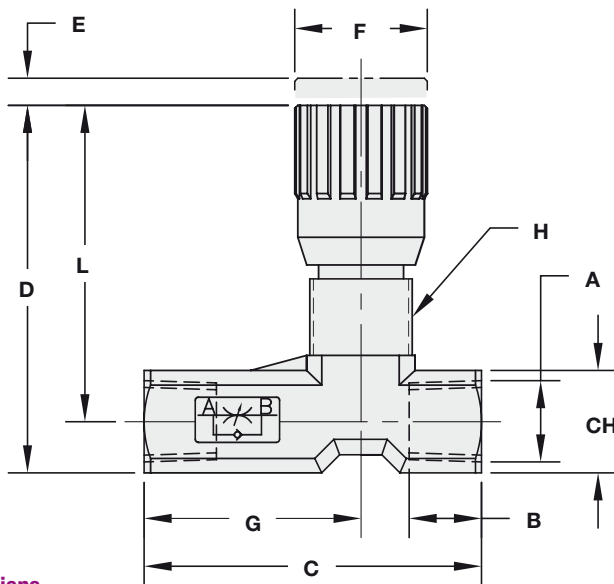


Medium-Pressure Brass Flow Control Valve - Type FCM (In-Line Assembly)



Dimensions

Type + Nominal Size	Thread Options A	Dimensions (mm/in)						Thread H	L	□ CH	Weight (kg/lbs)			
		B	C	D	E	F	G							
FCM-8	1/4 NPT							M17x1	11	17	0,14			
	7/16-20 UNF (1/4" SAE)	12 .47	56 2.20	61 2.40	4,5 .18	22 .87	11,5 .45					.43	.67	.31
	1/4 BSP													
FCM-10	3/8 NPT							M20x1	15	22	0,26			
	9/16-18 UNF (3/4" SAE)	13 .51	64,5 2.54	74 2.91	7 .28	27 1.06	12,5 .49					.59	.97	.57
	3/8 BSP													
FCM-12	1/2 NPT							M25x1,5	19	27	0,49			
	3/4-16 UNF (1/2" SAE)	16 .63	87 3.42	82 3.23	10 .39	33 1.30	13 .51					.75	1.06	1.08
	1/2 BSP													

Characteristics

Throttle and shut-off the flow of liquid media in direction A-B (free flow in reverse direction)

Features

- Designed for in-line assembly with female NPT, SAE and BSP threaded connections
- Ideal for medium-pressure applications
- Panel mounting kits available on request
- Graduated turning knob to accurately control flow
- Set-screw located on side of turning knob to lock valve in position

Media Compatibility

- Suitable for hydraulic fluids

Please consult STAUFF before using with other media.

Materials

- Body made of Brass, nickel-plated
- Internal components made of Stainless Steel
- O-rings made of NBR (Buna-N®); FPM (Viton®) sealed version available
- Anti-extrusion ring made of PTFE

Consult STAUFF for alternative materials.

Technical Data

- Maximum working pressure: 200 bar / 3000 PSI (for all sizes)
- Operating temperature range: -34 °C ... +121 °C / -30 °F ... +250 °F

Order Codes

FCM - 8 N



① Type

Medium-Pressure Flow Control Valve
(In-Line Assembly)

FCM

② STAUFF Size

08 10 12

③ Connection

Female NPT threads (ANSI B1.20.1) (standard option) **N**
 Female UN/UNF thread (SAE J514) **S**
 Female BSP threads (ISO 228) **B**

Accessories / Spare Parts

Panel Mounting Kits

- for NVH/FCH/NVW/FCM-08 (thread size M17x1): **PMK-8-T**
- for NVH/FCH/NVW/FCM-10 (thread size M20x1): **PMK-810-T**
- for NVH/FCH/NVW/FCM-12 (thread size M25x1,5): **PMK-1012-T**