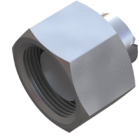
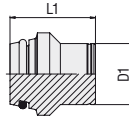
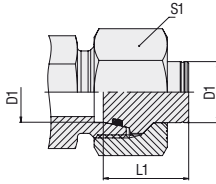


Blanking Plug with 24° Taper / O-Ring (DKO) Type FI-VD ▪ Series L / S



Series	Tube OD [mm]	PN [bar]	Dimensions [mm]		Weight [kg] ca. per 100 ¹	Ordering Codes	
			L1	S1		Blanking plug supplied with union nut	Blanking plug only
L	6	500	17	14	2,4	FI-VD-06L-B-W3-M	FI-VD-06L/S-B-W3
	8	500	17	17	3,7	FI-VD-08L-B-W3-M	FI-VD-08L/S-B-W3
	10	500	20	19	5,0	FI-VD-10L-B-W3-M	FI-VD-10L/S-B-W3
	12	400	21	22	7,0	FI-VD-12L-B-W3-M	FI-VD-12L/S-B-W3
	15	400	20	27	11,5	FI-VD-15L-B-W3-M	FI-VD-15L-B-W3
	18	400	21	32	16,9	FI-VD-18L-B-W3-M	FI-VD-18L-B-W3
	22	250	23	36	23,6	FI-VD-22L-B-W3-M	FI-VD-22L-B-W3
	28	250	23	41	40,4	FI-VD-28L-B-W3-M	FI-VD-28L-B-W3
	35	250	29	50	63,5	FI-VD-35L-B-W3-M	FI-VD-35L-B-W3
	42	250	30	60	79,0	FI-VD-42L-B-W3-M	FI-VD-42L-B-W3
S	6	800	17	17	4,0	FI-VD-06S-B-W3-M	FI-VD-06L/S-B-W3
	8	800	17	19	4,9	FI-VD-08S-B-W3-M	FI-VD-08L/S-B-W3
	10	800	20	22	7,5	FI-VD-10S-B-W3-M	FI-VD-10L/S-B-W3
	12	630	21	24	9,0	FI-VD-12S-B-W3-M	FI-VD-12L/S-B-W3
	14	630	23	27	13,6	FI-VD-14S-B-W3-M	FI-VD-14S-B-W3
	16	630	24	30	17,3	FI-VD-16S-B-W3-M	FI-VD-16S-B-W3
	20	400	28	36	28,3	FI-VD-20S-B-W3-M	FI-VD-20S-B-W3
	25	400	31	46	53,1	FI-VD-25S-B-W3-M	FI-VD-25S-B-W3
	30	400	34	50	64,3	FI-VD-30S-B-W3-M	FI-VD-30S-B-W3
	38	400	38	60	99,9	FI-VD-38S-B-W3-M	FI-VD-38S-B-W3

¹Weight including union nut.

Standard seal material is NBR (Buna-N®).

E