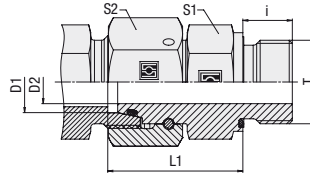


Straight Male Stud Fitting with 24° Taper / O-Ring (DKO) Type FI-EGED-...-R-WD ▪ Series L / S



Whitworth Parallel Pipe Thread (BSPP)

Profile Sealing Ring

Series	Tube OD [mm]	PN [bar]	Dimensions [mm]						Torque [N·m] ca.	Weight [kg] ca. per 100	Ordering Codes Fitting body only
			Thread T	D2	i	L1	S1	S2			
L	6	500	G 1/8	2,5	8	24,5	14	14	18	3,0	FI-EGED-06LR-WD-B-W3-DKO
	8	500	G 1/4	4	12	29,5	19	17	35	6,1	FI-EGED-08LR-WD-B-W3-DKO
	10	500	G 1/4	6	12	27,5	19	19	35	6,1	FI-EGED-10LR-WD-B-W3-DKO
	10	400	G 3/8	6	12	29	22	19	70	6,7	FI-EGED-10LR3/8-WD-B-W3-DKO
	12	400	G 1/4	6	12	27,5	19	22	35	7,5	FI-EGED-12LR1/4-WD-B-W3-DKO
	12	400	G 3/8	8	12	34	22	22	70	10,2	FI-EGED-12LR-WD-B-W3-DKO
	12	400	G 1/2	8	14	29,5	27	22	90	12,3	FI-EGED-12LR1/2-WD-B-W3-DKO
	15	400	G 1/2	10	14	32	27	27	90	14,6	FI-EGED-15LR-WD-B-W3-DKO
	18	400	G 1/2	13	14	31,5	27	32	90	15,6	FI-EGED-18LR-WD-B-W3-DKO
	18	250	G 3/4	13	16	29,5	32	32	180	19,0	FI-EGED-18LR3/4-WD-B-W3-DKO
	22	250	G 3/4	17	16	32,5	32	36	180	20,7	FI-EGED-22LR-WD-B-W3-DKO
	28	250	G 1	22	18	35	41	41	310	38,0	FI-EGED-28LR-WD-B-W3-DKO
	35	250	G 1 1/4	28	20	42,5	50	50	450	55,2	FI-EGED-35LR-WD-B-W3-DKO
42	250	G 1 1/2	34	22	46,5	55	60	540	74,2	FI-EGED-42LR-WD-B-W3-DKO	
S	6	800	G 1/4	2,5	12	27	19	17	55	5,9	FI-EGED-06SR-WD-B-W3-DKO
	8	800	G 1/4	4	12	29,5	19	19	55	6,9	FI-EGED-08SR-WD-B-W3-DKO
	10	800	G 3/8	6	12	32	22	22	80	10,6	FI-EGED-10SR-WD-B-W3-DKO
	12	630	G 1/4	5	12	31,5	19	24	55	9,6	FI-EGED-12SR1/4-WD-B-W3-DKO
	12	630	G 3/8	8	12	34	22	24	80	11,3	FI-EGED-12SR-WD-B-W3-DKO
	12	630	G 1/2	8	14	34,5	27	24	115	15,0	FI-EGED-12SR1/2-WD-B-W3-DKO
	14	630	G 1/2	9	14	37	27	27	115	17,1	FI-EGED-14SR-WD-B-W3-DKO
	16	630	G 1/2	11	14	37	27	30	115	17,9	FI-EGED-16SR-WD-B-W3-DKO
	20	400	G 3/4	14	16	43	32	36	180	28,6	FI-EGED-20SR-WD-B-W3-DKO
	25	400	G 1	18	18	48	41	46	310	52,3	FI-EGED-25SR-WD-B-W3-DKO
	30	400	G 1 1/4	23	20	51	50	50	450	73,7	FI-EGED-30SR-WD-B-W3-DKO
38	400	G 1 1/2	30	22	60	55	60	540	98,9	FI-EGED-38SR-WD-B-W3-DKO	

Standard seal material is NBR (Buna-N®).

Male stud according to ISO 1179-2 (Type E)

Port according to ISO 1179-1

Torque recommendations for Steel mating material.



Please make sure to follow the assembly instructions for this product as described on page G13.