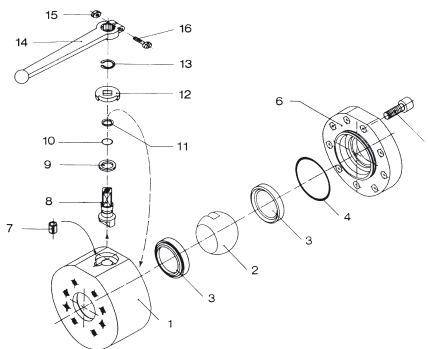


## High-Pressure Round Body Ball Valve - Type BBV29



### List of Components

No.	Qty.	Description
1	1	Housing
2	1	Ball
3*	2	Seat
4*	1	Cover O-Ring
5	7-9**	Cover Screws
6	1	Cover
7	1	Stop Pin
8	1	Stem
9*	1	Thrust Ring
10*	1	Stem O-Ring
11*	1	Back-up Ring
12	1	Cam Plate
13	1	Snap Ring
14	1	Handle
15	1	Nut
16	1	Screw

\* Included in seal kit  
\*\* Depending on valve size

### Characteristics

Two-way high-pressure round body ball valves designed for use as on/off devices for hydraulic applications

#### Standard Construction

- Round body design for in-line assembly
- Machined parts for reduced torque operation
- Designed for direct mount to reduce threads in fluid flow
- Supplied with lever

#### Standard Materials

- Body: Carbon Steel, zinc/iron-plated
- Ball: Carbon Steel, hard chrome-plated
- Stem: Carbon Steel
- Lever: Aluminium (STAUFF Size 08)  
Zinc (STAUFF Sizes 12 and 16)  
Aluminium (STAUFF Sizes 20 to 32)
- Ball seat: Delrin® (POM)
- O-rings: FPM (Viton®)

#### Standard Connections Styles / Sizes

- 3000 PSI (code 61) direct SAE flange connection
- 6000 PSI (code 62) direct SAE flange connection
- Dual pattern: 3000 PSI (code 61) arranged horizontally and 6000 PSI (code 62) arranged vertically
- Metric ISO and unified coarse (UNC) threads

#### Pressure Range

- Pressure range: up to 420 bar / 6000 PSI (depending on size and material combination of the ball valve)

**Please note: The final maximum working pressure is determined by flange and pipe/tubing rating.**

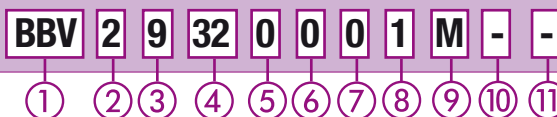
#### Temperature Range

- Operating temperature range: -20°C ... +100°C / -4°F ... + 212°F

#### Options / Accessories

- Flanges and flange kits (see Flanges section)
- Alternative lever designs/materials (see page F98)
- Locking devices (see pages F99-F101)
- Pneumatic actuator packages (see page F102)
- Limit switches (see page F102)
- Stainless Steel body
- Stainless Steel ball and stem
- Special ball seat and O-ring materials available for lower/higher temperatures and more aggressive media
- Electrical actuators available on request. Please consult STAUFF for further information.

### Order Codes



#### ① Type

High-Pressure Round Body Ball Valve **BBV**

#### ② Number of Ports

Two Ports (Two-Way Ball Valve) **2**

#### ③ Connection Style

3000/6000 PSI (Code 61/62) SAE Direct Flange Connection with Unified Coarse (UNC) Threads **9**  
3000/6000 PSI (Code 61/62) SAE Direct Flange Connection with Metric ISO Threads **9M**

Please consult STAUFF for alternative connection styles.

#### ④ Connection Size

STAUFF Size (according to dimension table):  
08 12 16 20 24 32

Please consult STAUFF for alternative connection sizes.

#### ⑤ Body Material / Surface Finishing

Carbon Steel, zinc/iron-plated **0**  
Stainless Steel V4A (AISI 316Ti) **1**

Alternative materials / surface finishings are available upon request. Consult STAUFF for further information.

#### ⑥ Ball / Stem Material

Ball: Carbon Steel, hard chrome-plated **0**  
Stem: Carbon Steel **0**  
Ball / Stem: Stainless Steel V4A (AISI 316Ti) **1**

Alternative materials / surface finishings are available upon request. Consult STAUFF for further information.

#### ⑦ Ball Seat Material

Delrin® (POM) **0**

Alternative materials are available upon request. Consult STAUFF for further information.

#### ⑧ O-Ring Material

NBR (Buna-N®) **0**  
FPM (Viton®) **1**

Alternative materials are available upon request. Consult STAUFF for further information.

#### ⑨ Manufacturing Code

Manufacturing code for all connection styles **M**

#### ⑩ Lever Options

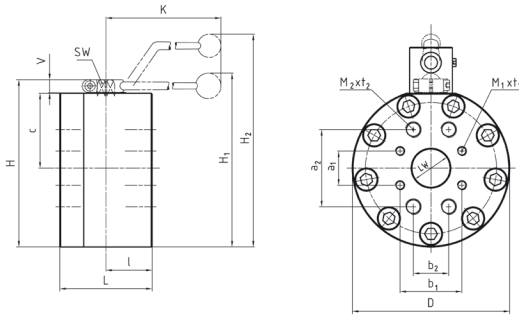
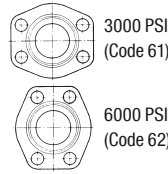
Supplied with standard lever (according to table) **-**  
Supplied without lever **-0**

Alternative levers can be ordered separately. Please see page F98 for further information.

#### ⑪ Accessories / Options

Supplied without accessories **-**  
Supplied with Locking Device LD4 **-LD4**  
Supplied with Locking Device LD5A (standard) **-LD5A**  
Supplied with Double-Acting Pneumatic Actuator (Please add size \*\*) **-EDA\*\***  
Supplied with Single-Acting Pneumatic Actuator (Please add size \*\*) **-ESA\*\***  
Supplied with Limit Switch in open position **-LS-0**  
Supplied with Limit Switch in closed position **-LS-C**  
Supplied with Limit Switch in open and closed position **-LS-OC**

Please see page F99 for further information.

**High-Pressure Round Body Ball Valve - Type BBV29  
3000/6000 PSI Flange Connection (ISO 6162-1/2)**

**Flange Position**


When ordering the standard option as indicated in the table below, the following materials will be supplied:

- Body, ball and stem: Carbon Steel
- Lever: Aluminium (STAUFF Size 08)  
Zinc (STAUFF Sizes 12 and 16)  
Aluminium (STAUFF Sizes 20 to 32)
- Ball seat: Delrin® (POM)
- O-rings: FPM (Viton®)

**Dual Pattern - 3000/6000 PSI Series (Code 61/62) - Unified Coarse (UNC) Threads**

STAUFF Size	SAE Flange Size	Nominal Size DN	Dimensions (mm/in)																Max. Pressure (PSI)	Weight (kg/lbs)	Order Codes (Standard Option)			
			LW	L	I	D	H	c	V	K	SW	a1	b1	M1	t1	a2	b2	M2	t2	H1	H2			
08	1/2	15	15	75	35	88	88	31	13	160	12	17.5	38.1	5/16-18	18	40.5	18.2	5/16-18	18	132	420	2,96	BBV29080001M	
			.59	2.95	1.38	3.46	3.46	1.22	.51	6.30	.47	.69	1.50	UNC	.71	1.59	.72	UNC	.71	5.20	6000	6.51		
12	3/4	20	20	80	35	98	100	36.5	14	200	14	22.2	47.6	3/8-16	18	50.8	23.8	3/8-16	18	103	420	4,20	BBV29120001M	
			.79	3.15	1.38	3.86	3.94	1.44	.55	7.87	.55	.87	1.87	UNC	.71	2.00	.94	UNC	.71	4.06	6000	9.24		
16	1	25	25	88	38	118	113	39.5	14	200	14	27.8	57.2	7/16-14	20	52.4	26.2	3/8-16	20	116	420	6,00	BBV29160001M	
			.98	3.46	1.50	4.65	4.45	1.56	.55	7.87	.55	1.09	2.25	UNC	.79	2.06	1.03	UNC	.79	4.57	6000	13.20		
20	1-1/4	32	32	100	50	145	158	68	17	320	17	30.2	58.7	7/16-14	20	66.6	31.8	1/2-13	22	167	420	11,71	BBV29200001M	
			1.26	3.94	1.97	5.71	6.22	2.68	.67	12.60	.67	1.19	2.31	UNC	.79	2.62	1.25	UNC	.87	6.57	6000	25.76		
24	1-1/2	40	38	110	55	165	178	78	17	320	17	35.7	69.8	1/2-13	20	79.4	36.5	5/8-11	27	187	420	17,10	BBV29240001M	
			1.50	4.33	2.17	6.50	7.01	3.07	.67	12.60	.67	1.41	2.75	UNC	.79	3.13	1.44	UNC	1.06	7.36	6000	37.62		
32	2	50	48	116	58	198	210	94	17	320	17	42.9	77.8	1/2-13	20	96.8	44.5	3/4-10	28	203	420	24,60	BBV29320001M	
			1.89	4.57	2.28	7.80	8.27	3.70	.67	12.60	.67	1.69	3.06	UNC	.79	3.81	1.75	UNC	1.10	7.99	6000	54.12		

**Dual Pattern - 3000/6000 PSI Series (Code 61/62) - Metric ISO Threads**

STAUFF Size	SAE Flange Size	Nominal Size DN	Dimensions (mm/in)																Max. Pressure (PSI)	Weight (kg/lbs)	Order Codes (Standard Option)			
			LW	L	I	D	H	c	V	K	SW	a1	b1	M1	t1	a2	b2	M2	t2	H1	H2			
08	1/2	15	15	75	35	88	88	31	13	160	12	17.5	38.1	M8	18	40.5	18.2	M8	18	132	420	2,96	BBV29M080001M	
			.59	2.95	1.38	3.46	3.46	1.22	.51	6.30	.47	.69	1.50	UNC	.71	1.59	.72	UNC	.71	5.20	6000	6.51		
12	3/4	20	20	80	35	98	100	36.5	14	200	14	22.2	47.6	M10	18	50.8	23.8	M10	18	103	420	4,20	BBV29M120001M	
			.79	3.15	1.38	3.86	3.94	1.44	.55	7.87	.55	.87	1.87	UNC	.71	2.00	.94	UNC	.71	4.06	6000	9.24		
16	1	25	25	88	38	118	113	39.5	14	200	14	27.8	57.2	M12	20	52.4	26.2	M10	20	116	420	6,00	BBV29M160001M	
			.98	3.46	1.50	4.65	4.45	1.56	.55	7.87	.55	1.09	2.25	UNC	.79	2.06	1.03	UNC	.79	4.57	6000	13.20		
20	1-1/4	32	32	100	50	145	158	68	17	320	17	30.2	58.7	M10	20	66.6	31.8	M12	22	167	420	11,71	BBV29M200001M	
			1.26	3.94	1.97	5.71	6.22	2.68	.67	12.60	.67	1.19	2.31	UNC	.79	2.62	1.25	UNC	.87	6.57	6000	25.76		
24	1-1/2	40	38	110	55	165	178	78	17	320	17	35.7	69.8	M12	20	79.4	36.5	M16	27	187	420	17,10	BBV29M240001M	
			1.50	4.33	2.17	6.50	7.01	3.07	.67	12.60	.67	1.41	2.75	UNC	.79	3.13	1.44	UNC	1.06	7.36	6000	37.62		
32	2	50	48	116	58	198	210	94	17	320	17	42.9	77.8	M12	20	96.8	44.5	M20	28	203	420	24,60	BBV29M320001M	
			1.89	4.57	2.28	7.80	8.27	3.70	.67	12.60	.67	1.69	3.06	UNC	.79	3.81	1.75	UNC	1.10	7.99	6000	54.12		

Please note: The final maximum working pressure is determined by flange and pipe/tubing rating.