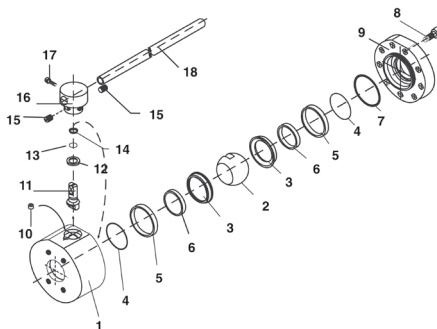
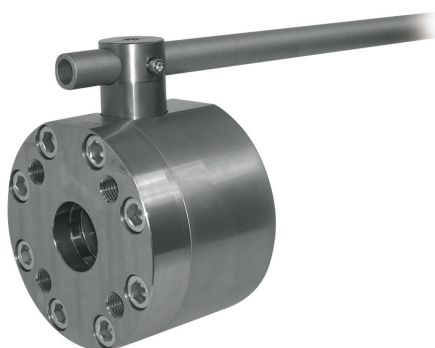


High-Pressure Round Body Ball Valve - Type BBV27/28



List of Components

No.	Qty.	Description
1	1	Housing
2	1	Ball
3*	2	Seat
4*	2	O-Ring
5	2	Outer S/S Support Ring
6	2	Inner S/S Support Ring
7*	1	Cover O-Ring
8	9	Cover Bolts
9	1	Cover
10	1	Stop Screw
11	1	Stem
12*	1	Thrust Ring
13*	1	Stem O-Ring
14*	1	Back-up Ring
15	2	Set Screws
16	1	Stem/Handle Adaptor
17	1	Screw
18	1	Steel Handle

* Included in seal kit

Characteristics

Two-way high-pressure round body ball valves designed for use as on/off devices for hydraulic applications

Standard Construction

- Round body design for in-line assembly
- Machined parts for reduced torque operation
- Designed for direct mount to reduce threads in fluid flow
- Supplied with removable, adjustable lever

Standard Materials

- Body: Carbon Steel, zinc/iron-plated
- Ball: Carbon Steel, hard chrome-plated
- Stem: Carbon Steel
- Lever: Carbon Steel
- Ball seat: Delrin® (POM)
- O-rings: FPM (Viton®)

Standard Connections Styles / Sizes

- 3000 PSI (code 61) direct SAE flange connection
- 6000 PSI (code 62) direct SAE flange connection
- Metric ISO and unified coarse (UNC) threads

Pressure Range

- Pressure range: up to 170 bar / 2500 PSI (depending on size and material combination of the ball valve)

Please note: The pressure range is limited to the SAE flange ratings. Higher pressures can be accommodated by using special flange connectors, type BBVF (see page F232).

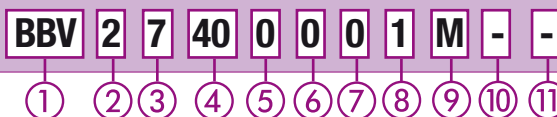
Temperature Range

- Operating temperature range: -20 °C ... +100 °C / -4 °F ... + 212 °F

Options / Accessories

- Flanges and flange kits (see Flanges section)
- Locking devices (see pages F99-F101)
- Pneumatic actuator packages (see page F102)
- Limit switches (see page F102)
- Stainless Steel body
- Stainless Steel ball and stem
- Special ball seat and O-ring materials available for lower/higher temperatures and more aggressive media
- Electrical actuators available on request. Please consult STAUFF for further information.

Order Codes



① Type

High-Pressure Round Body Ball Valve **BBV**

② Number of Ports

Two Ports (Two-Way Ball Valve) **2**

③ Connection Style

3000 PSI (Code 61) SAE Direct Flange Connection with Unified Coarse (UNC) Threads	7
3000 PSI (Code 61) SAE Direct Flange Connection with Metric ISO Threads	7M
6000 PSI (Code 62) SAE Direct Flange Connection with Unified Coarse (UNC) Threads	8
6000 PSI (Code 62) SAE Direct Flange Connection with Metric ISO Threads	8M

Please consult STAUFF for alternative connection styles.

④ Connection Size

STAUFF Size (according to dimension table):			
40	48	64	80

Please consult STAUFF for alternative connection sizes.

⑤ Body Material / Surface Finishing

Carbon Steel, zinc/iron-plated	0
Stainless Steel V4A (AISI 316Ti)	1

Alternative materials / surface finishings are available upon request. Consult STAUFF for further information.

⑥ Ball / Stem Material

Ball: Carbon Steel, hard chrome-plated	0
Stem: Carbon Steel	0
Ball / Stem: Stainless Steel V4A (AISI 316Ti)	1

Alternative materials / surface finishings are available upon request. Consult STAUFF for further information.

⑦ Ball Seat Material

Delrin® (POM)	0
---------------	----------

Alternative materials are available upon request. Consult STAUFF for further information.

⑧ O-Ring Material

NBR (Buna-N®)	0
FPM (Viton®)	1

Alternative materials are available upon request. Consult STAUFF for further information.

⑨ Manufacturing Code

Manufacturing code for all connection styles **M**

⑩ Lever Options

Supplied with standard lever (according to table)	-
Supplied without lever	-0

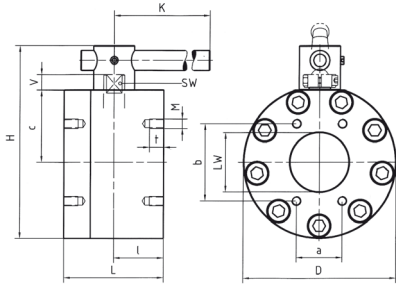
Alternative levers can be ordered separately. Please see page F98 for further information.

⑪ Accessories / Options

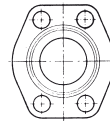
Supplied without accessories	-
Supplied with Locking Device LD5A (standard)	-LD5A
Supplied with Locking Device LD5B	-LD5B
Supplied with Double-Acting Pneumatic Actuator (Please add size **)	-EDA**
Supplied with Single-Acting Pneumatic Actuator (Please add size **)	-ESA**
Supplied with Limit Switch in open position	-LS-0
Supplied with Limit Switch in closed position	-LS-C
Supplied with Limit Switch in open and closed position	-LS-OC

Please see page F99 for further information.

High-Pressure Round Body Ball Valve - Type BBV27/28 3000 PSI Flange Connection (ISO 6162-1)



Flange Position



3000 PSI
(Code 61)

When ordering the standard option as indicated in the table below, the following materials will be supplied:

- Body, ball and stem: Carbon Steel
- Lever: Carbon Steel
- Ball seat: Delrin® (POM)
- O-rings: FPM (Viton®)

3000 PSI Series (Code 61) - Unified Coarse (UNC) Threads

STAUFF Size	SAE Flange Size	Nominal Size DN	Dimensions (mm/in)													Nom. Pressure (bar/PSI)	Weight (kg/lbs)	Order Codes (Standard Option)
			LW	L	l	D	H	c	V	K	SW	a	b	M	t			
40	2-1/2	65	63	150	75	198	259	94	20	600	16	50,8	88,9	1/2-13 UNC	19	170	33,50	BBV27400001M
			2.48	5.91	2.95	7.80	10.20	3.70	.79	23.62	.63	2.00	3.50		.75	2500	73.70	
48	3	80	76	140	70	210	277	100	26	600	19	61,9	106,4	5/8-11 UNC	24	138	33,50	BBV27480001M
			2.99	5.51	2.76	8.27	10.91	3.94	1.02	23.62	.75	2.44	4.19		.95	2000	73.70	
64	4	100	100	170	85	258	326	122	27	900	24	77,8	130,2	5/8-11 UNC	24	35	60,50	BBV27640001M
			3.94	6.69	3.35	10.16	12.83	4.80	1.06	35.43	.94	3.06	5.13		.95	500	133.10	
80	5	125	118	210	105	295	377	140	33	900	36	92,1	152,4	5/8-11 UNC	30	35	95,50	BBV27800001M
			4.65	8.27	4.13	11.61	14.84	5.51	1.30	35.43	1.42	3.63	6.00		1.18	500	210.10	

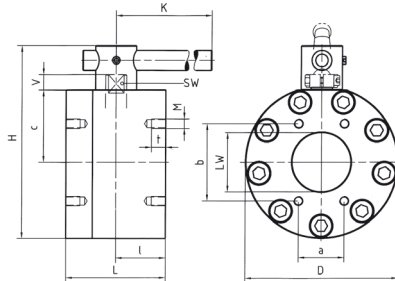
3000 PSI Series (Code 61) - Metric ISO Threads

STAUFF Size	SAE Flange Size	Nominal Size DN	Dimensions (mm/in)													Nom. Pressure (bar/PSI)	Weight (kg/lbs)	Order Codes (Standard Option)
			LW	L	l	D	H	c	V	K	SW	a	b	M	t			
40	2-1/2	65	63	150	75	198	259	94	20	600	16	50,8	88,9	M12	19	170	33,50	BBV27M400001M
			2.48	5.91	2.95	7.80	10.20	3.70	.79	23.62	.63	2.00	3.50		.75	2500	73.70	
48	3	80	76	140	70	210	277	100	26	600	19	61,9	106,4	M16	24	138	33,50	BBV27M480001M
			2.99	5.51	2.76	8.27	10.91	3.94	1.02	23.62	.75	2.44	4.19		.95	2000	73.70	
64	4	100	100	170	85	258	326	122	27	900	24	77,8	130,2	M16	24	35	60,50	BBV27M640001M
			3.94	6.69	3.35	10.16	12.83	4.80	1.06	35.43	.94	3.06	5.13		.95	500	133.10	
80	5	125	118	210	105	295	377	140	33	900	36	92,1	152,4	M16	30	35	95,50	BBV27M800001M
			4.65	8.27	4.13	11.61	14.84	5.51	1.30	35.43	1.42	3.63	6.00		1.18	500	210.10	

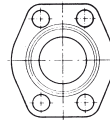
Please note: The final maximum working pressure is determined by flange and pipe/tubing rating.

Lever must be fixed in central position during operation. In case of vibration, the lever may otherwise operate the valve by itself.

High-Pressure Round Body Ball Valve - Type BBV27/28 6000 PSI Flange Connection (ISO 6162-2)



Flange Position



6000 PSI
(Code 62)

When ordering the standard option as indicated in the table below, the following materials will be supplied:

- Body, ball and stem: Stainless Steel
- Lever: Carbon Steel
- Ball seat: Delrin® (POM)
- O-rings: FPM (Viton®)

6000 PSI Series (Code 62) - Unified Coarse (UNC) Threads

STAUFF Size	SAE Flange Size	Nominal Size DN	Dimensions (mm/in)													Nom. Pressure (bar/PSI)	Weight (kg/lbs)	Order Codes (Standard Option)
			LW	L	l	D	H	c	V	K	SW	a	b	M	t			
40	2-1/2	65	63	170	75	218	275	100	20	600	16	123,8	58,8	7/8-9 UNC	41	420	44,50	BBV28400001M
			2.48	6.69	2.95	8.58	10.83	3.94	.79	23.62	.63	4.87	2.31		1.61	6000	97.90	
48	3	80	76	170	70	248	307	111	21	600	19	152,4	71,4	1-1/8-7 UNC	47	420	55,00	BBV28480001M
			2.99	6.69	2.76	9.76	12.09	4.37	.83	23.62	.75	6.00	2.81		1.85	6000	121.00	

6000 PSI Series (Code 62) - Metric ISO Threads

STAUFF Size	SAE Flange Size	Nominal Size DN	Dimensions (mm/in)													Nom. Pressure (bar/PSI)	Weight (kg/lbs)	Order Codes (Standard Option)
			LW	L	l	D	H	c	V	K	SW	a	b	M	t			
40	2-1/2	65	63	170	75	218	275	100	20	600	16	123,8	58,8	M24	41	420	44,50	BBV28M400001M
			2.48	6.69	2.95	8.58	10.83	3.94	.79	23.62	.63	4.87	2.31		1.61	6000	97.90	
48	3	80	76	170	70	248	307	111	21	600	19	152,4	71,4	M30	47	420	55,00	BBV28M480001M
			2.99	6.69	2.76	9.76	12.09	4.37	.83	23.62	.75	6.00	2.81		1.85	6000	121.00	

Please note: The final maximum working pressure is determined by flange and pipe/tubing rating.

Lever must be fixed in central position during operation. In case of vibration, the lever may otherwise operate the valve by itself.