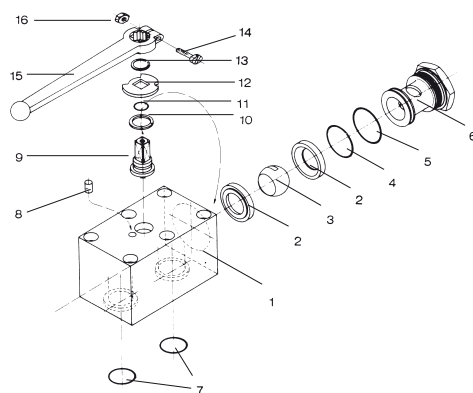
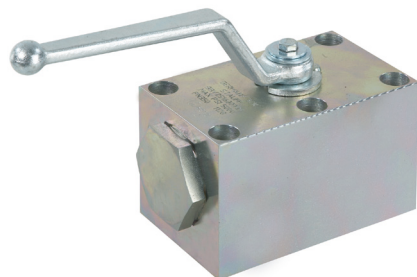


High-Pressure Block Body Ball Valve - Type BBV25



List of Components

No.	Qty.	Description
1	1	Body
2*	1	Seats
3	2	Ball
4*	2	O-Ring
5*	2	O-Ring
6	2	Retainer Plug
7*	2	O-Ring
8	1	Stop Pin
9	1	Stem
10*	1	Thrust Ring
11	1	O-Ring
12	1	Cam Plate
13	1	Snap Ring
14	1	Clamping Screw
15	1	Handle
16	1	Clamping Nut

* Included in seal kit

Characteristics

Two-way high-pressure block body ball valves designed for use as on/off devices for hydraulic applications

Standard Construction

- Block body design for manifold mounting
- Improved manifold design eliminates external piping and connectors
- Supplied with lever

Standard Materials

- Body: Carbon Steel, zinc/iron-plated
- Ball: Carbon Steel, hard chrome-plated
- Stem: Carbon Steel
- Lever: Zinc (STAUFF Sizes 04 to 16)
Carbon Steel (STAUFF Sizes 20 to 32)
- Ball seat: Delrin® (POM)
- O-rings: FPM (Viton®)

Standard Connections Styles / Sizes

- Manifold mounting
- Either 4 or 6 mounting holes for added safety (bolts are not included in delivery)

Pressure Range

- Pressure range: up to 500 bar / 7250 PSI (depending on size and material combination of the ball valve)

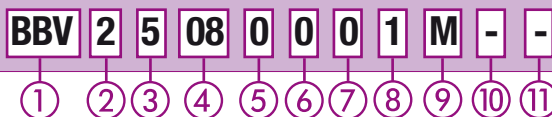
Temperature Range

- Operating temperature range:
-20°C ... +100°C / -4°F ... + 212°F

Options / Accessories

- Three-way version with 90° operation (see pages F38-F39)
- Three-way version with 180° operation (see pages F40-F41)
- Alternative lever designs/materials (see page F98)
- Locking devices (see pages F99-F101)
- Pneumatic actuator packages (see page F102)
- Limit switches (see page F102)
- Stainless Steel body
- Stainless Steel ball and stem
- Special ball seat and O-ring materials available for lower/higher temperatures and more aggressive media
- Electrical actuators available on request. Please consult STAUFF for further information.

Order Codes



① Type

High-Pressure Block Body Ball Valve **BBV**

② Number of Ports

Two Ports (Two-Way Ball Valve) **2**

③ Connection Style

Manifold Mounting **5**

Please consult STAUFF for alternative connection styles.

④ Connection Size

STAUFF Size (according to dimension table):
04 06 08 12 16 20 24 32

Please consult STAUFF for alternative connection sizes.

⑤ Body Material / Surface Finishing

Carbon Steel, zinc/iron-plated **0**
Stainless Steel V4A (AISI 316Ti) **1**

Alternative materials / surface finishings are available upon request. Consult STAUFF for further information.

⑥ Ball / Stem Material

Ball: Carbon Steel, hard chrome-plated **0**
Stem: Carbon Steel
Ball / Stem: Stainless Steel V4A (AISI 316Ti) **1**

Alternative materials / surface finishings are available upon request. Consult STAUFF for further information.

⑦ Ball Seat Material

Delrin® (POM) **0**
PEEK **G**
Delrin® (POM) with Stainless Steel
Inner Support Ring **H**

Alternative materials are available upon request. Consult STAUFF for further information.

⑧ O-Ring Material

NBR (Buna-N®) **0**
FPM (Viton®) **1**
EPDM **3**

Alternative materials are available upon request. Consult STAUFF for further information.

⑨ Manufacturing Code

Manufacturing code for all connection styles **M**

⑩ Lever Options

Supplied with standard lever (according to table) **-**
Supplied without lever **-0**

Alternative levers can be ordered separately. Please see page F98 for further information.

⑪ Accessories / Options

Supplied without accessories **-**
Supplied with Locking Device LD1 **-LD1**
Supplied with Locking Device LD4 (standard) **-LD4**
Supplied with Double-Acting Pneumatic Actuator (Please add size **) **-EDA****
Supplied with Single-Acting Pneumatic Actuator (Please add size **) **-ESA****
Supplied with Limit Switch in open position **-LS-0**
Supplied with Limit Switch in closed position **-LS-C**
Supplied with Limit Switch in open and closed position **-LS-OC**

Please see page F99 for further information.

