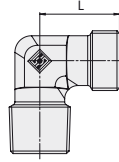
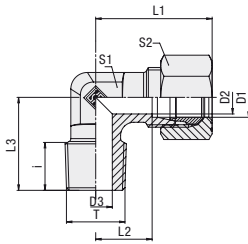


Male Stud Elbow Type FI-WE-...-Mk ▪ Series LL / L / S



Metric Taper Thread

Series	Tube OD [mm] D1	PN [bar]	Dimensions [mm]											Weight [kg] ca. per 100 ²	Ordering Codes	
			Thread T	D2	D3	i	L	L1 ¹	L2	L3	S1	S2	Fitting body supplied with cutting ring & union nut		Fitting body only	
LL	4	100	M 8 x 1 keg.	3	3,5	8	15	21	11	17	9	10	1,4	FI-WE-04LLMk-W3-MS	FI-WE-04LLMk-W3	
	6	100	M 10 x 1 keg.	4,5	4,5	8	15	21	9,5	17	9	12	1,8	FI-WE-06LLMk-W3-MS	FI-WE-06LLMk-W3	
	8	100	M 10 x 1 keg.	6	6	8	17	23	11,5	20	12	14	2,5	FI-WE-08LLMk-W3-MS	FI-WE-08LLMk-W3	
L	6	315	M 10 x 1 keg.	4	4	8	19	27	12	20	12	14	3,3	FI-WE-06LMk-W3-MS	FI-WE-06LMk-W3	
	8	315	M 12 x 1,5 keg.	6	6	12	21	29	14	26	12	17	4,6	FI-WE-08LMk-W3-MS	FI-WE-08LMk-W3	
	10	315	M 14 x 1,5 keg.	8	7	11,5	22	30	15	27	14	19	6,2	FI-WE-10LMk-W3-MS	FI-WE-10LMk-W3	
	12	315	M 16 x 1,5 keg.	10	9	11,5	24	32	17	28	17	22	8,0	FI-WE-12LMk-W3-MS	FI-WE-12LMk-W3	
	15	315	M 18 x 1,5 keg.	12	11	12	28	36	21	32	19	27	13,1	FI-WE-15LMk-W3-MS	FI-WE-15LMk-W3	
	18	315	M 22 x 1,5 keg.	15	14	14	31	40	23,5	36	24	32	19,4	FI-WE-18LMk-W3-MS	FI-WE-18LMk-W3	
S	6	630	M 12 x 1,5 keg.	4	4	12	23	31	16	26	12	17	5,7	FI-WE-06SMk-W3-MS	FI-WE-06SMk-W3	
	8	630	M 14 x 1,5 keg.	5	5	11,5	24	32	17	27	14	19	7,6	FI-WE-08SMk-W3-MS	FI-WE-08SMk-W3	
	10	630	M 16 x 1,5 keg.	7	7	11,5	25	34	17,5	28	17	22	9,8	FI-WE-10SMk-W3-MS	FI-WE-10SMk-W3	
	12	630	M 18 x 1,5 keg.	8	8	12	29	38	21,5	28	17	24	12,1	FI-WE-12SMk-W3-MS	FI-WE-12SMk-W3	
	14	630	M 20 x 1,5 keg.	10	10	14	30	40	22	32	19	27	16,7	FI-WE-14SMk-W3-MS	FI-WE-14SMk-W3	
	16	630	M 22 x 1,5 keg.	12	12	14	33	43	24,5	32	24	30	21,4	FI-WE-16SMk-W3-MS	FI-WE-16SMk-W3	

¹Approximate dimension with nut tightened.

²Weight including cutting ring and union nut.

Male stud according to DIN 3852-2 (Form C)

Port according to DIN 3852-2 (Form Z)

Suitable liquid / plastic sealant required.



Also available from STAUFF, your single source manufacturer and supplier of pipework equipment and hydraulic components:
Two-Way Forged Body Ball Valves FBV for in-line assembly to shut off fluid media in industrial and mobile hydraulics