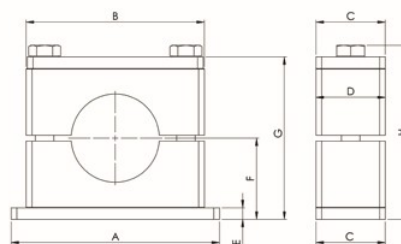
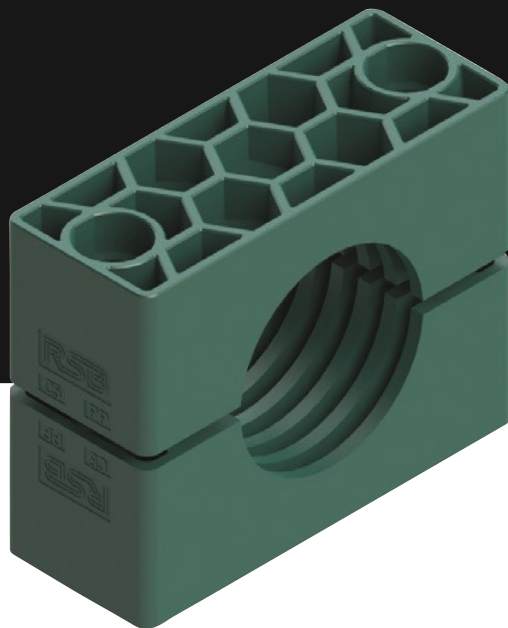


// 04

TUBE CLAMPS SERIES C



// DIMENSIONS AND WEIGHTS OF TUBE CLAMPS, COMPLETE (MM)

SIZE	A	B	C	D	E	F		G		H		WEIGHT / 10 PCS. RCPR3-xxx (kg)
						Grooved	Smooth	Grooved	Smooth	Grooved	Smooth	
1	73	56	30	30	8	24	23	48	46	54,4	52,4	0,31
	2.87	2.20	1.18	1.18	0.31	0.94	0.91	1.89	1.81	2.14	2.06	
2	84	71	30	30	8	32	31	64	62	70,4	68,4	0,41
	3.31	2.80	1.18	1.18	0.31	1.26	1.22	2.52	2.44	2.77	4.00	
3	100	86	30	30	8	38	37	76	74	82,4	80,4	0,48
	3.94	3.39	1.18	1.18	0.31	1.50	1.46	2.99	2.91	3.24	3.17	
4	140	117	45	45	10	55	53,5	110	107	117,5	114,5	1,24
	5.51	4.61	1.77	1.77	0.39	2.17	2.11	4.33	4.21	4.63	4.51	
5	180	154	60	60	10	70	67,5	140	135	150	145	2,43
	7.09	6.06	2.36	2.36	0.39	2.76	2.66	5.51	5.31	5.91	5.71	
6	225	206	80	80	15	99	96	198	192	210,5	204,5	6,12
	8.86	8.11	3.15	3.15	0.59	3.90	3.78	7.80	7.56	8.29	8.05	
7	270	251	90	90	15	115	112	230	224	245	239	8,69
	10.63	9.88	3.54	3.54	0.59	4.53	4.41	9.06	8.82	9.65	9.41	
8	340	320	120	120	25	160	157	320	314	333,7	327,7	22,49
	13.39	12.60	4.72	4.72	0.98	6.30	6.18	12.60	12.36	13.14	12.90	
9	520	470	160	162	30	235	-	470	-	488,7	-	51,23
	20.47	18.50	6.30	6.38	1.18	9.25	-	18.50	-	19.24	-	
10	680	630	180	182	30	295	-	590	-	608,7	-	74,38
	26.77	24.80	7.09	7.17	1.18	11.61	-	23.23	-	23.96	-	

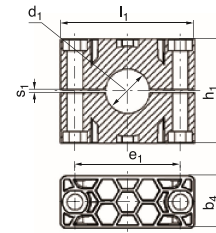
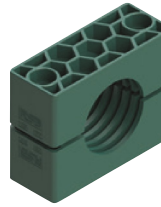
The weight was determined with the smallest diameter (see catalogue) and the standard model of the steel parts of the respective quantity in bulk.

dimensions $\frac{\text{mm}}{\text{Inch}}$

Order codes for clamp-halves:

Polypropylene **RCPR**
 inside smooth **RCPG^(1) 2)**
 Polyamide 6 **RCNR**
 inside smooth **RCNG^(1) 2)**
 Rubber **RCVR^(1) 3)**
RCVG^(1) 2) 3)
 Aluminium **RCAR**

Replace standard abbreviation RCPR in column "clamp-halves" as required.



SIZE	O.D. mm d ₁	Tube NB	Inch O.D.	RCPR 1 part / 2 clamp-halves	RCPR-... 2 clamp-halves				
					l ₁	h ₁	e ₁	s ₁	b ₄
1	6	G 1/8	5/16	RCPR-106	56	32	33	2	30
	8			RCPR-108					
	9,5			RCPR-109,5					
	10			RCPR-110					
	12			RCPR-112					
	12,7	G 1/4	1/2	RCPR-112,7					
	13,5			RCPR-113,5					
	14			RCPR-114					
	15			RCPR-115					
	16			RCPR-116					
17,2	G 3/8	5/8	RCPR-117,2						
18			RCPR-118						
2	19	G 1/2	3/4	RCPR-219	71	48	45	2	30
	20			RCPR-220					
	21,3			RCPR-221,3					
	22			RCPR-222					
	23			RCPR-223					
	25	G 3/4	1	RCPR-225					
	25,4			RCPR-225,4					
	26,9			RCPR-226,9					
	28			RCPR-228					
	30			RCPR-230					
3	30	G 1	1 1/4	RCPR-330	86	60	60	2	30
	32			RCPR-332					
	33,7			RCPR-333,7					
	35	G 1 1/4	1 1/2	RCPR-335					
	38			RCPR-338					
	40			RCPR-340					
42		RCPR-342							
4	38	G 1 1/4	1 1/2	RCPR-438	117	90	90	3	45
	40			RCPR-440					
	42			RCPR-442					
	45			RCPR-445					
	48,3	G 1 1/2		RCPR-448,3					
	50			RCPR-450					
	51	G 2	2	RCPR-451					
	52			RCPR-452					
	55			RCPR-455					
	57			RCPR-457					
	60,3			RCPR-460,3					
	63			RCPR-463					
	65			RCPR-465					
	70	RCPR-470							
		2 1/4		4.61	3.54	3.54	0.12	1.77	

dimensions mm
Inch

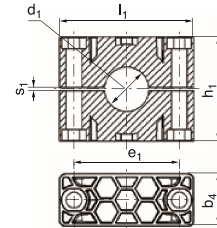
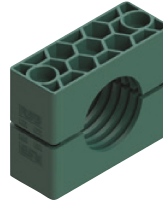
¹⁾Only Size 1-8 ²⁾without prestress

³⁾When assembling solid rubber tube clamps, cover plates, hexagon screws and locking washers must be used

Order codes for clamp-halves:

Polypropylene **RCPR**
 inside smooth **RCPG^{1) 2)}**
 Polyamide 6 **RCNR**
 inside smooth **RCNG^{1) 2)}**
 Rubber **RCVR^{1) 3)}**
RCVG^{1) 2) 3)}
 Aluminium **RCAR**

Replace standard abbreviation RCPR in column "clamp-halves" as required.



SIZE	O.D. mm	Tube NB	Inch O.D.	RCPR 1 part / 2 clamp-halves	RCPR-... 2 clamp-halves					
	d ₁				l ₁	h ₁	e ₁	s ₁	b ₄	
5	65	G 2 1/2	2 3/4	RCPR-565	154	120	122	5	60	
	70			RCPR-570						
	73			RCPR-573						
	75			RCPR-575						
	76,1	RCPR-576,1								
	80	RCPR-580								
	82,5	RCPR-582,5								
	85	RCPR-585								
6	88,9	G 3	3 1/2	RCPR-588,9						
	90			RCPR-590						
	90			RCPR-690						
	97			RCPR-697						
6	100	G 3 1/2	4	RCPR-6100	206	168	168	6	80	
	101,6			RCPR-6101,6						
	108			RCPR-6108						
	114,3	RCPR-6114,3								
	7	127	G 4	4 1/2						RCPR-6127
		127								RCPR-7127
130		RCPR-7130								
7	133	G 5	5	RCPR-7133	251	200	205	6	90	
	140			RCPR-7140						
	150			RCPR-7150						
	152,4			RCPR-7152,4						
	159	RCPR-7159								
	165,1	RCPR-7165,1								
	168,3	RCPR-7168,3								
	8	168,3	G 6	5						RCPR-8168,3
177,8		RCPR-8177,8								
193,7		RCPR-8193,7								
203		G 8	8	RCPR-8203	320	270	265	6	120	
219,1				RCPR-8219,1						
220				RCPR-8220						
9	219,1	G 8		RCPR-9219,1						
	244,5			RCPR-9244,5						
	273	G 10		RCPR-9273						
	323,9			G 12	RCPR-9323,9					
10	355,6	G 14		RCPR-10355,6	630	530	534	20	182	
	406,4			G 16						RCPR-10406,4
					24.80	20.87	21.02	0.79	7.17	

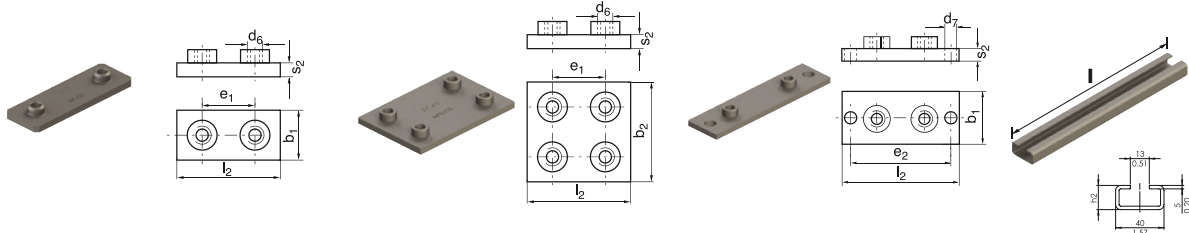
dimensions mm
inch

¹⁾Only Size 1-8 ²⁾without prestress

³⁾When assembling solid rubber tube clamps, cover plates, hexagon screws and locking washers must be used

TUBE CLAMPS SERIES C (HEAVY SERIES) | DIN 3015, PART 2 | COMPONENTS

Complete range please refer to pages 43 to 48.



SIZE	AP-C <i>Weld plate</i>						APD-C <i>Weld plate, double</i>					APL-C <i>Weld- and screw plate, elongated</i>					TS-C <i>Mounting rail</i>						
	e ₁	b ₁	l ₂	s ₂	d ₆		e ₁	b ₂	l ₂	s ₂	d ₆		l ₂	b ₁	s ₂	e ₂	d ₇		l	h ₂			
1	AP-C 1	33	30	73	8	M 10	APD-C 1	33	60	73	8	M 10	APL-C 1	113	60	73	8	M 10	TS-C 1	1m	22		
		1.30	1.18	2.87	0.31	3/8-16 UNC		1.30	2.36	2.87	0.31	3/8-16 UNC		4.45	2.36	2.87	0.31	3/8-16 UNC					
2	AP-C 2	45	30	84	8	M 10	APD-C 2	45	60	84	8	M 10	APL-C 2	125	60	84	8	M 10		3.28 ft			
		1.77	1.18	3.31	0.31	3/8-16 UNC		1.77	2.36	3.31	0.31	3/8-16 UNC		4.92	2.36	3.31	0.31	3/8-16 UNC					
3	AP-C 3	60	30	100	8	M 10	APD-C 3	60	60	100	8	M 10	APL-C 3	140	60	100	8	M 10		TS-C 2		2m	0.87
		2.36	1.18	3.94	0.31	3/8-16 UNC		2.36	2.36	3.94	0.31	3/8-16 UNC		5.51	2.36	3.94	0.31	3/8-16 UNC					
4	AP-C 4	90	45	140	10	M 12	APD-C 4	90	90	140	10	M 12	APL-C 4	190	90	140	10	M 12		6.56 ft			
		3.54	1.77	5.51	0.39	7/16-14 UNC		3.54	3.54	5.51	0.39	7/16-14 UNC		7.48	3.54	5.51	0.39	7/16-14 UNC					
5	AP-C 5	122	60	180	10	M 16	APD-C 5	122	120	180	10	M 16	APL-C 5	240	120	180	10	M 16					
		4.80	2.36	7.09	0.39	5/8-11 UNC		4.80	4.72	7.09	0.39	5/8-11 UNC		9.45	4.72	7.09	0.39	5/8-11 UNC					
6	AP-C 6	168	80	225	15	M 20	APD-C 6	168	160	225	15	M 20	APL-C 6	310	160	225	15	M 20					
		6.61	3.15	8.86	0.59	3/4-10 UNC		6.61	6.30	8.86	0.59	3/4-10 UNC		12.20	6.30	8.86	0.59	3/4-10 UNC					
7	AP-C 7	205	90	270	15	M 24	APD-C 7	205	180	270	15	M 24	APL-C 7	370	180	270	15	M 24					
		8.07	3.54	10.63	0.59	7/8-9 UNC		8.07	7.09	10.63	0.59	7/8-9 UNC		14.57	7.09	10.63	0.59	7/8-9 UNC					
8	AP-C 8	265	120	340	25	M 30	APD-C 8	265	240	340	25	M 30	APL-C 8	450	240	340	25	M 30					
		10.43	4.72	13.39	0.98	1 1/8-7 UNC		10.43	9.45	13.39	0.98	1 1/8-7 UNC		17.72	9.45	13.39	0.98	1 1/8-7 UNC					
9	AP-C 9	395	160	520	30	M 30	APD-C 9	395	330	520	30	M 30											
		15.55	6.30	20.47	1.18	1 1/8-7 UNC		15.55	12.99	20.47	1.18	1 1/8-7 UNC											
10	AP-C 10	534	180	680	30	M 30	APD-C 10	534	370	680	30	M 30											
		21.03	7.09	26.77	1.18	1 1/8-7 UNC		21.02	14.57	26.77	1.18	1 1/8-7 UNC											

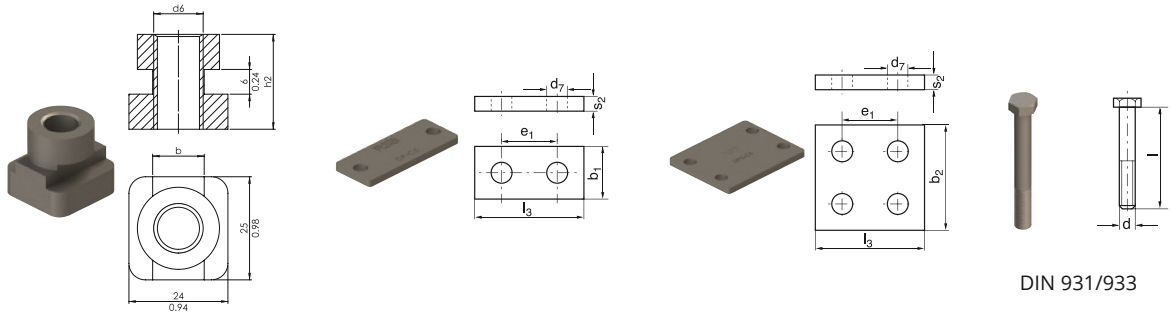
dimensions $\frac{\text{mm}}{\text{Inch}}$



All metal parts available in stainless steel.

TUBE CLAMPS SERIES C (HEAVY SERIES) | DIN 3015, PART 2 | COMPONENTS

Complete range please refer to pages 43 to 48.



DIN 931/933

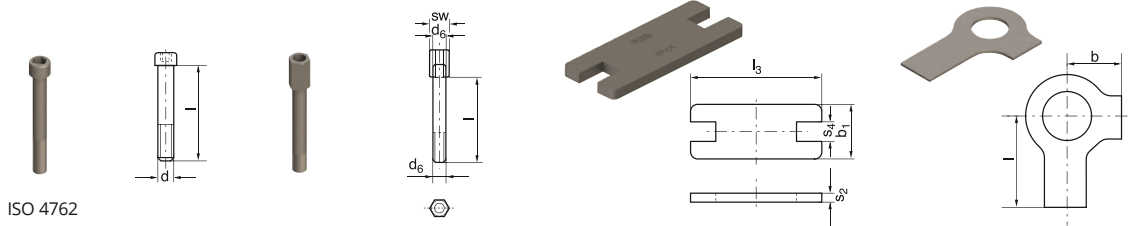
SIZE	TM-C Rail nut			DP-C Cover plate					DPD-C Cover plate, double					SS-C Hexagon head screw				
	h ₂	b	d ₆	l ₃	e ₁	b ₁	s ₂	d ₇	l ₃	e ₁	b ₂	s ₂	d ₇	d	x	l		
1	TM-C 1	20 0.79	12 0.47	M 10 3/16-16 UNC	DP-C 1	55 2.17	33 1.30	30 1.18	8 0.31	11 0.43	DPD-C 1	55 2.17	33 1.30	60 2.36	8 0.31	11 0.43	SS-C 1	M 10 x 40 3/8-16 UNC x 1 1/2
2					DP-C 2	70 2.76	45 1.77	30 1.18	8 0.31	11 0.43	DPD-C 2	70 2.76	45 1.77	60 2.36	8 0.31	11 0.43	SS-C 2	M 10 x 60 3/8-16 UNC x 1 3/8
3					DP-C 3	85 3.35	60 2.36	30 1.18	8 0.31	11 0.43	DPD-C 3	85 3.35	60 2.36	60 2.36	8 0.31	11 0.43	SS-C 3	M 10 x 70 3/8-16 UNC x 2 3/4
4	TM-C 4	23 0.91	12,5 0.49	M 12 7/16-14 UNC	DP-C 4	115 4.53	90 3.54	45 1.77	10 0.39	14 0.55	DPD-C 4	115 4.53	90 3.54	90 3.54	10 0.39	14 0.55	SS-C 4	M 12 x 100 7/16-14 UNC x 4
5					DP-C 5	152 5.98	122 4.80	60 2.36	10 0.39	18 0.71	DPD-C 5	152 5.98	122 4.80	120 4.72	10 0.39	18 0.71	SS-C 5	M 16 x 130 5/8-11 UNC x 5 1/4
6					DP-C 6	205 8.07	168 6.61	80 3.15	15 0.59	22 0.87	DPD-C 6	205 8.07	168 6.61	160 6.30	15 0.59	24 0.87	SS-C 6	M 20 x 190 3/4-10 UNC x 7 1/2
7					DP-C 7	251 9.88	205 8.07	90 3.54	15 0.59	28 1.10	DPD-C 7	250 9.88	205 8.07	180 7.09	15 0.59	28 1.10	SS-C 7	M 24 x 220 7/8-9 UNC x 8 3/4
8					DP-C 8	320 12.60	265 10.43	120 4.72	25 0.98	35 1.38	DPD-C 8	322 12.60	265 10.43	240 9.45	25 0.98	35 1.38	SS-C 8	M 30 x 300 1 1/8-7 UNC x 12
9					DP-C 9	470 18.50	395 15.55	160 6.30	30 1.18	35 1.38	DPD-C 9	470 18.50	395 15.55	330 12.99	30 1.18	35 1.38	SS-C 9	M 30 x 450 1 1/8-7 UNC x 17 1/2
10					DP-C 10	630 24.80	534 21.02	180 7.09	30 1.18	35 1.38	DPD-C 10	630 24.80	534 21.02	360 14.17	30 1.18	35 1.38	SS-C 10	M 30 x 560 1 1/8-7 UNC x 22

dimensions $\frac{\text{mm}}{\text{Inch}}$

All metal parts available in stainless steel.



Complete range please refer to pages 43 to 48.



SIZE	IS-C Hexagon socket head screw			AS-C Stacking bolt ¹⁾			SP-C Locking plate ¹⁾				US-C Locking washer ²⁾		
	d	x	l	l	d ₆	sw	l ₃	b ₁	s ₂	s ₄	b	l	
1	M 10 x 40 3/8-16 UNC x 1 1/2	AS-C 1	25	M 10	15	SP-C 1	55	30	8	15,5	US-C 1	13	22
			0.98				3/8-16 UNC						
2	M 10 x 60 3/8-16 UNC x 1 3/8	AS-C 2	40	M 10	15	SP-C 2	70	30	8	15,5	US-C 1	0.51	0.87
			1.57				3/8-16 UNC						
3	M 10 x 70 3/8-16 UNC x 2 3/4	AS-C 3	50	M 10	15	SP-C 3	85	30	8	15,5	US-C 4	15	28
			1.97				3/8-16 UNC						
4	M 12 x 100 7/16-14 UNC x 4	AS-C 4	80	M 12	17	SP-C 4	115	45	10	17,5	US-C 4	0.59	1.10
			3.15				7/16-14 UNC						
5	M 16 x 130 5/8-11 UNC x 5 1/4	AS-C 5	110	M 16	21	SP-C 5	152	60	10	21,5	US-C 5	0.71	1.26
			4.33				5/8-11 UNC						
6	M 20 x 190 3/4-10 UNC x 7 1/2	AS-C 6	155	M 20	27	SP-C 6	205	80	15	27,5	US-C 6	0.83	1.42
			6.10				3/4-10 UNC						
7	M 24 x 220 7/8-9 UNC x 8 3/4	AS-C 7	180	M 24	30	SP-C 7	250	90	15	30,5	US-C 7	0.98	1.65
			7.09				7/8-9 UNC						
8	M 30 x 300 1 1/8-7 UNC x 12	AS-C 8	250	M 30	36	SP-C 8	320	120	25	36,5	US-C 8	1.26	2.05
			9.84				1 1/8-7 UNC						
9	M 30 x 450 1 1/8-7 UNC x 17 1/2												
10	M 30 x 560 1 1/8-7 UNC x 22												

dimensions $\frac{\text{mm}}{\text{Inch}}$

All metal parts available in stainless steel.

¹⁾The usage of stacking bolts necessitates the deployment of locking plates during the construction assembly

²⁾When assembling solid rubber clamps, cover plates, hexagon screws and locking washers must be used



TUBE CLAMPS SERIES C | COMPLETE RANGE

Order codes for clamp-halves:

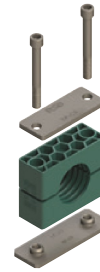
Polypropylene **RCPR**
 inside smooth **RCPG¹⁾**
 Polyamide 6 **RCNR**
 inside smooth **RCNG¹⁾**
 Rubber **RCVR^{1) 3)}**
RCVG^{1) 3)}
 Aluminium **RCAR**

Replace standard abbreviation RCPR in column "Order codes" as required.

2 clamp halves with weld plate, cover plate and hexagon head screws



2 clamp halves with weld plate, cover plate and hexagon socket head screws



SIZE	O.D. mm	Tube NB	Inch O.D.	Order Codes	Order Codes
1	6	G 1/8	5/16 3/8	RCPR 1-106	RCPR 2-106
	8			RCPR 1-108	RCPR 2-108
	9,5			RCPR 1-109,5	RCPR 2-109,5
	10	G 1/4	1/2	RCPR 1-110	RCPR 2-110
	12			RCPR 1-112	RCPR 2-112
	12,7			RCPR 1-112,7	RCPR 2-112,7
	13,5			RCPR 1-113,5	RCPR 2-113,5
	14	G 3/8	5/8	RCPR 1-114	RCPR 2-114
	15			RCPR 1-115	RCPR 2-115
	16			RCPR 1-116	RCPR 2-116
	17,2			RCPR 1-117,2	RCPR 2-117,2
18	RCPR 1-118			RCPR 2-118	
2	19	G 1/2	3/4	RCPR 1-219	RCPR 2-219
	20			RCPR 1-220	RCPR 2-220
	21,3			RCPR 1-221,3	RCPR 2-221,3
	22			RCPR 1-222	RCPR 2-222
	23			RCPR 1-223	RCPR 2-223
	25	G 3/4	1	RCPR 1-225	RCPR 2-225
	25,4			RCPR 1-225,4	RCPR 2-225,4
	26,9			RCPR 1-226,9	RCPR 2-226,9
	28			RCPR 1-228	RCPR 2-228
30	RCPR 1-230	RCPR 2-230			
3	30	G 1	1 1/4	RCPR 1-330	RCPR 2-330
	32			RCPR 1-332	RCPR 2-332
	33,7			RCPR 1-333,7	RCPR 2-333,7
	35			RCPR 1-335	RCPR 2-335
	38	G 1 1/4	1 1/2	RCPR 1-338	RCPR 2-338
	40			RCPR 1-340	RCPR 2-340
42	RCPR 1-342	RCPR 2-342			
4	38	G 1 1/4	1 1/2	RCPR 1-438	RCPR 2-438
	40			RCPR 1-440	RCPR 2-440
	42			RCPR 1-442	RCPR 2-442
	45			RCPR 1-445	RCPR 2-445
	48,3	G 1 1/2	2	RCPR 1-448,3	RCPR 2-448,3
	50			RCPR 1-450	RCPR 2-450
	51	G 2	2	RCPR 1-451	RCPR 2-451
	52			RCPR 1-452	RCPR 2-452
	55			RCPR 1-455	RCPR 2-455
	57			RCPR 1-457	RCPR 2-457
	60,3			RCPR 1-460,3	RCPR 2-460,3
	63	2 1/4	2 1/2	RCPR 1-463	RCPR 2-463
	65			RCPR 1-465	RCPR 2-465
	70			RCPR 1-470	RCPR 2-470

If different combinations are required, we would be obliged if they could be ordered as separate components (Please refer to individual components, pages 38 – 42). Delivery in unassembled individual components. ¹⁾Only Size 1–8 ³⁾When assembling solid rubber tube clamps, cover plates, hexagon screws and locking washers must be used

TUBE CLAMPS SERIES C | COMPLETE RANGE

Order codes for clamp-halves:

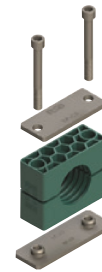
Polypropylene **RCPR**
 inside smooth **RCPG¹⁾**
 Polyamide 6 **RCNR**
 inside smooth **RCNG¹⁾**
 Rubber **RCVR^{1) 3)}**
RCVG^{1) 3)}
 Aluminium **RCAR**

Replace standard abbreviation RCPR in column "Order codes" as required.

2 clamp halves with weld plate, cover plate and hexagon head screws



2 clamp halves with weld plate, cover plate and hexagon socket head screws



SIZE	O.D. mm	Tube NB	Inch O.D.	Order Codes	Order Codes
5	65	G 2 1/2	2 3/4	RCPR 1-565	RCPR 2-565
	70			RCPR 1-570	RCPR 2-570
	73			RCPR 1-573	RCPR 2-573
	75			RCPR 1-575	RCPR 2-575
	76,1		RCPR 1-576,1	RCPR 2-576,1	
	80	RCPR 1-580	RCPR 2-580		
	82,5	RCPR 1-582,5	RCPR 2-582,5		
	85	RCPR 1-585	RCPR 2-585		
6	88,9	G 3	3 1/2	RCPR 1-588,9	RCPR 2-588,9
	90			RCPR 1-590	RCPR 2-590
	90			RCPR 1-690	RCPR 2-690
	97			RCPR 1-697	RCPR 2-697
7	100	G 3 1/2	4	RCPR 1-6100	RCPR 2-6100
	101,6			RCPR 1-6101,6	RCPR 2-6101,6
	108			RCPR 1-6108	RCPR 2-6108
	114,3	G 4	4 1/2	RCPR 1-6114,3	RCPR 2-6114,3
	127			RCPR 1-6127	RCPR 2-6127
	127			G 5	5
130	RCPR 1-7130	RCPR 2-7130			
133	RCPR 1-7133	RCPR 2-7133			
140	RCPR 1-7140	RCPR 2-7140			
8	150	G 6	6	RCPR 1-7150	RCPR 2-7150
	152,4			RCPR 1-7152,4	RCPR 2-7152,4
	159			RCPR 1-7159	RCPR 2-7159
	165,1			RCPR 1-7165,1	RCPR 2-7165,1
	168,3			RCPR 1-7168,3	RCPR 2-7168,3
	168,3			G 8	8
177,8	RCPR 1-8177,8	RCPR 2-8177,8			
193,7	RCPR 1-8193,7	RCPR 2-8193,7			
203	RCPR 1-8203	RCPR 2-8203			
219,1	RCPR 1-8219,1	RCPR 2-8219,1			
220	RCPR 1-8220	RCPR 2-8220			
9	219,1	G 8		RCPR 1-9219,1	RCPR 2-9219,1
	244,5			RCPR 1-9244,5	RCPR 2-9244,5
	273			RCPR 1-9273	RCPR 2-9273
	323,9			RCPR 1-9323,9	RCPR 2-9323,9
10	355,6	G 14		RCPR 1-10355,6	RCPR 2-10355,6
	406,4			RCPR 1-10406,4	RCPR 2-10406,4

If different combinations are required, we would be obliged if they could be ordered as separate components (Please refer to individual components, pages 38 – 42). Delivery in unassembled individual components. ¹⁾Only Size 1–8 ³⁾When assembling solid rubber tube clamps, cover plates, hexagon screws and locking washers must be used

TUBE CLAMPS SERIES C | COMPLETE RANGE

Order codes for clamp-halves:

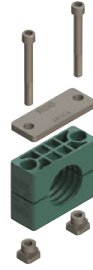
Polypropylene **RCPR**
 inside smooth **RCPG¹⁾**
 Polyamide 6 **RCNR**
 inside smooth **RCNG¹⁾**
 Rubber **RCVR^{1) 3)}**
RCVG^{1) 3)}
 Aluminium **RCAR**

Replace standard abbreviation RCPR in column "Order codes" as required.

2 clamp halves with rail nut, cover plate and hexagon head screws



2 clamp halves with rail nut, cover plate and hexagon socket head screws



2 clamp halves with stacking bolts and locking plate



SIZE	O.D. mm	Tube NB	Inch O.D.	Order Codes	Order Codes	Order Codes
1	6	G 1/8	5/16 3/8	RCPR 3-106	RCPR 4-106	RCPR 5-106
	8			RCPR 3-108	RCPR 4-108	RCPR 5-108
	9,5			RCPR 3-109,5	RCPR 4-109,5	RCPR 5-109,5
	10			RCPR 3-110	RCPR 4-110	RCPR 5-110
	12	G 1/4	1/2	RCPR 3-112	RCPR 4-112	RCPR 5-112
	12,7			RCPR 3-112,7	RCPR 4-112,7	RCPR 5-112,7
	13,5			RCPR 3-113,5	RCPR 4-113,5	RCPR 5-113,5
	14	G 3/8	5/8	RCPR 3-114	RCPR 4-114	RCPR 5-114
	15			RCPR 3-115	RCPR 4-115	RCPR 5-115
	16			RCPR 3-116	RCPR 4-116	RCPR 5-116
17,2	RCPR 3-117,2			RCPR 4-117,2	RCPR 5-117,2	
18	RCPR 3-118	RCPR 4-118	RCPR 5-118			
2	19	G 1/2	3/4	RCPR 3-219	RCPR 4-219	RCPR 5-219
	20			RCPR 3-220	RCPR 4-220	RCPR 5-220
	21,3			RCPR 3-221,3	RCPR 4-221,3	RCPR 5-221,3
	22			RCPR 3-222	RCPR 4-222	RCPR 5-222
	23	G 3/4	1	RCPR 3-223	RCPR 4-223	RCPR 5-223
	25			RCPR 3-225	RCPR 4-225	RCPR 5-225
	25,4			RCPR 3-225,4	RCPR 4-225,4	RCPR 5-225,4
	26,9			RCPR 3-226,9	RCPR 4-226,9	RCPR 5-226,9
	28			RCPR 3-228	RCPR 4-228	RCPR 5-228
	30			RCPR 3-230	RCPR 4-230	RCPR 5-230
3	30	G 1	1 1/4	RCPR 3-330	RCPR 4-330	RCPR 5-330
	32			RCPR 3-332	RCPR 4-332	RCPR 5-332
	33,7			RCPR 3-333,7	RCPR 4-333,7	RCPR 5-333,7
	35			RCPR 3-335	RCPR 4-335	RCPR 5-335
	38	G 1 1/4	1 1/2	RCPR 3-338	RCPR 4-338	RCPR 5-338
	40			RCPR 3-340	RCPR 4-340	RCPR 5-340
	42			RCPR 3-342	RCPR 4-342	RCPR 5-342
4	38	G 1 1/4	1 1/2	RCPR 3-438	RCPR 4-438	RCPR 5-438
	40			RCPR 3-440	RCPR 4-440	RCPR 5-440
	42			RCPR 3-442	RCPR 4-442	RCPR 5-442
	45			RCPR 3-445	RCPR 4-445	RCPR 5-445
	48,3	G 1 1/2	2	RCPR 3-448,3	RCPR 4-448,3	RCPR 5-448,3
	50			RCPR 3-450	RCPR 4-450	RCPR 5-450
	51			RCPR 3-451	RCPR 4-451	RCPR 5-451
	52	G 2	2 1/4	RCPR 3-452	RCPR 4-452	RCPR 5-452
	55			RCPR 3-455	RCPR 4-455	RCPR 5-455
	57			RCPR 3-457	RCPR 4-457	RCPR 5-457
	60,3			RCPR 3-460,3	RCPR 4-460,3	RCPR 5-460,3
	63			RCPR 3-463	RCPR 4-463	RCPR 5-463
	65			RCPR 3-465	RCPR 4-465	RCPR 5-465
	70	RCPR 3-470	RCPR 4-470	RCPR 5-470		

If different combinations are required, we would be obliged if they could be ordered as separate components (Please refer to individual components, pages 38 – 42). Delivery in unassembled individual components. ¹⁾Only Size 1–8 ³⁾When assembling solid rubber tube clamps, cover plates, hexagon screws and locking washers must be used

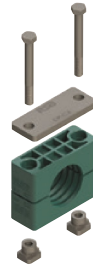
TUBE CLAMPS SERIES C | COMPLETE RANGE

Order codes for clamp-halves:

Polypropylene **RCPR**
 inside smooth **RCPG¹⁾**
 Polyamide 6 **RCNR**
 inside smooth **RCNG¹⁾**
 Rubber **RCVR^{1) 3)}**
RCVG^{1) 3)}
 Aluminium **RCAR**

Replace standard abbreviation RCPR in column "Order codes" as required.

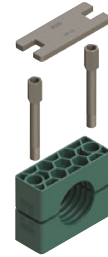
2 clamp halves with rail nut, cover plate and hexagon head screws



2 clamp halves with rail nut, cover plate and hexagon socket head screws



2 clamp halves with stacking bolts and locking plate



SIZE	O.D. mm	Tube NB	Inch O.D.	Order Codes	Order Codes	Order Codes
5	65	G 2 1/2	2 3/4			RCPR 5-565
	70					RCPR 5-570
	73					RCPR 5-573
	75					RCPR 5-575
	76,1					RCPR 5-576,1
	80	RCPR 5-580				
	82,5	RCPR 5-582,5				
	85	RCPR 5-585				
	88,9	RCPR 5-588,9				
	90	RCPR 5-590				
6	90	G 3 1/2	4			RCPR 5-690
	97					RCPR 5-697
	100					RCPR 5-6100
	101,6	RCPR 5-6101,6				
	108	RCPR 5-6108				
	114,3	RCPR 5-6114,3				
127	G 4	5	RCPR 5-6127			
7	127	G 5	5			RCPR 5-7127
	130					RCPR 5-7130
	133					RCPR 5-7133
	140					RCPR 5-7140
	150					RCPR 5-7150
	152,4	RCPR 5-7152,4				
	159	RCPR 5-7159				
	165,1	RCPR 5-7165,1				
	168,3	RCPR 5-7168,3				
	8	168,3	G 6			8
177,8		RCPR 5-8177,8				
193,7		RCPR 5-8193,7				
203		RCPR 5-8203				
219,1		RCPR 5-8219,1				
220		G 8	RCPR 5-8220			

If different combinations are required, we would be obliged if they could be ordered as separate components (Please refer to individual components, pages 38 – 42). Delivery in unassembled individual components. ¹⁾Only Size 1–8 ³⁾When assembling solid rubber tube clamps, cover plates, hexagon screws and locking washers must be used

TUBE CLAMPS SERIES C | COMPLETE RANGE

Order codes for clamp-halves:

Polypropylene **RCPR**
 inside smooth **RCPG¹⁾**
 Polyamide 6 **RCNR**
 inside smooth **RCNG¹⁾**
 Rubber **RCVR^{1) 3)}**
RCVG^{1) 3)}
 Aluminium **RCAR**

Replace standard abbreviation RCPR in column "Order codes" as required.

4 clamp halves with double weld plate, double cover plate and hexagon head screws



4 clamp halves with double weld plate, double cover plate and hexagon socket head screws



SIZE	O.D. mm	Tube NB	Inch O.D.	Order Codes	Order Codes
1	6	G 1/8	5/16	RCPDR 1-106	RCPDR 2-106
	8			RCPDR 1-108	RCPDR 2-108
	9,5			RCPDR 1-109,5	RCPDR 2-109,5
	10			RCPDR 1-110	RCPDR 2-110
	12	G 1/4	1/2	RCPDR 1-112	RCPDR 2-112
	12,7			RCPDR 1-112,7	RCPDR 2-112,7
	13,5			RCPDR 1-113,5	RCPDR 2-113,5
	14			RCPDR 1-114	RCPDR 2-114
	15	G 3/8	5/8	RCPDR 1-115	RCPDR 2-115
	16			RCPDR 1-116	RCPDR 2-116
17,2	RCPDR 1-117,2			RCPDR 2-117,2	
18	RCPDR 1-118			RCPDR 2-118	
2	19	G 1/2	3/4	RCPDR 1-219	RCPDR 2-219
	20			RCPDR 1-220	RCPDR 2-220
	21,3			RCPDR 1-221,3	RCPDR 2-221,3
	22			RCPDR 1-222	RCPDR 2-222
	23	G 3/4	1	RCPDR 1-223	RCPDR 2-223
	25			RCPDR 1-225	RCPDR 2-225
	25,4			RCPDR 1-225,4	RCPDR 2-225,4
	26,9			RCPDR 1-226,9	RCPDR 2-226,9
	28			RCPDR 1-228	RCPDR 2-228
	30			RCPDR 1-230	RCPDR 2-230
3	30	G 1	1 1/4	RCPDR 1-330	RCPDR 2-330
	32			RCPDR 1-332	RCPDR 2-332
	33,7			RCPDR 1-333,7	RCPDR 2-333,7
	35			RCPDR 1-335	RCPDR 2-335
	38	G 1 1/4	1 1/2	RCPDR 1-338	RCPDR 2-338
	40			RCPDR 1-340	RCPDR 2-340
42	RCPDR 1-342	RCPDR 2-342			
4	38	G 1 1/4	1 1/2	RCPDR 1-438	RCPDR 2-438
	40			RCPDR 1-440	RCPDR 2-440
	42			RCPDR 1-442	RCPDR 2-442
	45			RCPDR 1-445	RCPDR 2-445
	48,3	G 1 1/2	2	RCPDR 1-448,3	RCPDR 2-448,3
	50			RCPDR 1-450	RCPDR 2-450
	51			RCPDR 1-451	RCPDR 2-451
	52			RCPDR 1-452	RCPDR 2-452
	55	G 2	2 1/4	RCPDR 1-455	RCPDR 2-455
	57			RCPDR 1-457	RCPDR 2-457
	60,3			RCPDR 1-460,3	RCPDR 2-460,3
	63			RCPDR 1-463	RCPDR 2-463
	65			RCPDR 1-465	RCPDR 2-465
	70			RCPDR 1-470	RCPDR 2-470

If different combinations are required, we would be obliged if they could be ordered as separate components (Please refer to individual components, pages 38 – 42). Delivery in unassembled individual components. ¹⁾Only Size 1–8 ³⁾When assembling solid rubber tube clamps, cover plates, hexagon screws and locking washers must be used

TUBE CLAMPS SERIES C | COMPLETE RANGE

Order codes for clamp-halves:

Polypropylene inside smooth	RCPR
Polyamide 6 inside smooth	RCPG¹⁾
Rubber	RCNR
	RCNG¹⁾
	RCVR^{1) 3)}
	RCVG^{1) 3)}
Aluminium	RCAR

Replace standard abbreviation RCPR in column "Order codes" as required.

4 clamp halves with double weld plate, double cover plate and hexagon head screws



4 clamp halves with double weld plate, double cover plate and hexagon socket head screws



SIZE	O.D. mm	Tube NB	Inch O.D.	Order Codes	Order Codes
5	65	G 2 1/2	2 3/4	RCPDR 1-565	RCPDR 2-565
	70			RCPDR 1-570	RCPDR 2-570
	73			RCPDR 1-573	RCPDR 2-573
	75		RCPDR 1-575	RCPDR 2-575	
	76,1		RCPDR 1-576,1	RCPDR 2-576,1	
	80	G 3	3	RCPDR 1-580	RCPDR 2-580
	82,5			RCPDR 1-582,5	RCPDR 2-582,5
	85			RCPDR 1-585	RCPDR 2-585
	88,9			RCPDR 1-588,9	RCPDR 2-588,9
90	RCPDR 1-590	RCPDR 2-590			
6	90	G 3 1/2	4	RCPDR 1-690	RCPDR 2-690
	97			RCPDR 1-697	RCPDR 2-697
	100			RCPDR 1-6100	RCPDR 2-6100
	101,6	G 4	4 1/2	RCPDR 1-6101,6	RCPDR 2-6101,6
	108			RCPDR 1-6108	RCPDR 2-6108
	114,3			RCPDR 1-6114,3	RCPDR 2-6114,3
127		5	RCPDR 1-6127	RCPDR 2-6127	
7	127	G 5	5	RCPDR 1-7127	RCPDR 2-7127
	130			RCPDR 1-7130	RCPDR 2-7130
	133			RCPDR 1-7133	RCPDR 2-7133
	140			RCPDR 1-7140	RCPDR 2-7140
	150			RCPDR 1-7150	RCPDR 2-7150
	152,4	G 6	6	RCPDR 1-7152,4	RCPDR 2-7152,4
	159			RCPDR 1-7159	RCPDR 2-7159
	165,1			RCPDR 1-7165,1	RCPDR 2-7165,1
	168,3			RCPDR 1-7168,3	RCPDR 2-7168,3
8	168,3	G 6	8	RCPDR 1-8168,3	RCPDR 2-8168,3
	177,8	G 8		RCPDR 1-8177,8	RCPDR 2-8177,8
	193,7			RCPDR 1-8193,7	RCPDR 2-8193,7
	203			RCPDR 1-8203	RCPDR 2-8203
	219,1			RCPDR 1-8219,1	RCPDR 2-8219,1
220	RCPDR 1-8220	RCPDR 2-8220			
9	219,1	G 8		RCPDR 1-9219,1	RCPDR 2-9219,1
	244,5	G 10		RCPDR 1-9244,5	RCPDR 2-9244,5
	273		RCPDR 1-9273	RCPDR 2-9273	
	323,9	G 12		RCPDR 1-9323,9	RCPDR 2-9323,9
10	355,6	G 14		RCPDR 1-10355,6	RCPDR 2-10355,6
	406,4	G 16		RCPDR 1-10406,4	RCPDR 2-10406,4

If different combinations are required, we would be obliged if they could be ordered as separate components (Please refer to individual components, pages 38 – 42). Delivery in unassembled individual components. ¹⁾Only Size 1–8 ³⁾When assembling solid rubber tube clamps, cover plates, hexagon screws and locking washers must be used