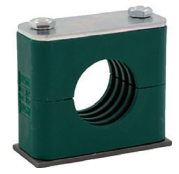


# DIN 3015 LIGHT SERIES TUBING CLAMPS



## QUICK REFERENCE ORDERING CODES

Tubing	Pipe	Copper Tubing	I.D.	Carbon Steel Hardware Part No.	304SS Hardware Part No.	316 Stainless Steel Hardware Part No.
1/4"			0.25"	RAPR3-106,4/UNC	RAPR3-106,4/1.4301/UNC	RAPR3-106,4/1.4571/UNC
3/8"		1/4"	0.375"	RAPR3-109,5/UNC	RAPR3-109,5/1.4301/UNC	RAPR3-109,5/1.4571/UNC
	1/8"		0.39"	RAPR3-110/UNC	RAPR3-110/1.4301/UNC	RAPR3-110/1.4571/UNC
1/2"		3/8"	0.5"	RAPR3-212,7/UNC	RAPR3-212,7/1.4301/UNC	RAPR3-212,7/1.4571/UNC
	1/4"		0.53"	RAPR3-213,5/UNC	RAPR3-213,5/1.4301/UNC	RAPR3-213,5/1.4571/UNC
5/8"		1/2"	0.625"	RAPR3-216/UNC	RAPR3-216/1.4301/UNC	RAPR3-216/1.4571/UNC
	3/8"		0.67"	RAPR3-217,2/UNC	RAPR3-217,2/1.4301/UNC	RAPR3-217,2/1.4571/UNC
3/4"			0.75"	RAPR3-319/UNC	RAPR3-319/1.4301/UNC	RAPR3-319/1.4571/UNC
	1/2"		0.83"	RAPR3-321,3/UNC	RAPR3-321,3/1.4301/UNC	RAPR3-321,3/1.4571/UNC
7/8"		3/4"	0.875"	RAPR3-322/UNC	RAPR3-322/1.4301/UNC	RAPR3-322/1.4571/UNC
1"			1"	RAPR3-325,4/UNC	RAPR3-325,4/1.4301/UNC	RAPR3-325,4/1.4571/UNC
	3/4"		1.05"	RAPR3-426,9/UNC	RAPR3-426,9/1.4301/UNC	RAPR3-426,9/1.4571/UNC
		1"	1.125"	RAPR3-428,6/UNC	RAPR3-428,6/1.4301/UNC	RAPR3-428,6/1.4571/UNC
1 - 1/4"			1.25"	RAPR3-532/UNC	RAPR3-532/1.4301/UNC	RAPR3-532/1.4571/UNC
	1"		1.32"	RAPR3-533,7/UNC	RAPR3-533,7/1.4301/UNC	RAPR3-533,7/1.4571/UNC
		1 - 1/4"	1.375"	RAPR3-535/UNC	RAPR3-535/1.4301/UNC	RAPR3-535/1.4571/UNC
1 - 1/2"			1.5"	RAPR3-538/UNC	RAPR3-538/1.4301/UNC	RAPR3-538/1.4571/UNC
		1 - 1/2"	1.625"	RAPR3-541,3/UNC	RAPR3-541,3/1.4301/UNC	RAPR3-541,3/1.4571/UNC
	1 - 1/4"		1.65"	RAPR3-542/UNC	RAPR3-542/1.4301/UNC	RAPR3-542/1.4571/UNC
1 - 3/4"			1.75"	RAPR3-644,5/UNC	RAPR3-644,5/1.4301/UNC	RAPR3-644,5/1.4571/UNC
	1 - 1/2"		1.9"	RAPR3-648,3/UNC	RAPR3-648,3/1.4301/UNC	RAPR3-648,3/1.4571/UNC
2"			2"	RAPR3-650,8/UNC	RAPR3-650,8/1.4301/UNC	RAPR3-650,8/1.4571/UNC
		2"	2.125"	RAPR3-654/UNC	RAPR3-654/1.4301/UNC	RAPR3-654/1.4571/UNC
2 - 1/4"			2.25"	RAPR3-757,2/UNC	RAPR3-757,2/1.4301/UNC	RAPR3-757,2/1.4571/UNC
	2"		2.37"	RAPR3-760,3/UNC	RAPR3-760,3/1.4301/UNC	RAPR3-760,3/1.4571/UNC
2 - 1/2"			2.5"	RAPR3-763,5/UNC	RAPR3-763,5/1.4301/UNC	RAPR3-763,5/1.4571/UNC
		2 - 1/2"	2.625"	RAPR3-766,7/UNC	RAPR3-766,7/1.4301/UNC	RAPR3-766,7/1.4571/UNC
2 - 3/4"			2.75"	RAPR3-770/UNC	RAPR3-770/1.4301/UNC	RAPR3-770/1.4571/UNC
	2 - 1/2"		2.87"	RAPR3-763,5/UNC	RAPR3-763,5/1.4301/UNC	RAPR3-763,5/1.4571/UNC
3"			3"	RAPR3-776,1/UNC	RAPR3-776,1/1.4301/UNC	RAPR3-776,1/1.4571/UNC
		3"	3.125"	RAPR3-779,4/UNC	RAPR3-779,4/1.4301/UNC	RAPR3-779,4/1.4571/UNC
3 - 1/2"	3"		3.5"	RAPR3-888,9/UNC	RAPR3-888,9/1.4301/UNC	RAPR3-888,9/1.4571/UNC
4"			4"	RAPR3-8101,8/UNC	RAPR3-8101,8/1.4301/UNC	RAPR3-8101,8/1.4571/UNC

## Materials of Construction for above Standard Parts

Components	Carbon Steel Hardware	304SS Hardware	316SS Hardware
Clamp Body	Polypropylene (Green)	Polypropylene (Green)	Polypropylene (Green)
Weld Plate	Carbon Steel	304 Stainless Steel	316 Stainless Steel
Cover Plate	Zinc-Plated	304 Stainless Steel	316 Stainless Steel
Bolts	Zinc-Plated	304 Stainless Steel	316 Stainless Steel

### Clamp Body Options

- ☑ Polypropylene (Green) is standard
- ☑ Polyamide (Black)
- ☑ Aluminum
- ☑ Smooth Bore (Hose)

### Temperature Rating

- ☑ Polypropylene: -22F to 212F
- ☑ Polyamide: -40F to 248F
- ☑ Aluminum: -40F to 572F

# DIN 3015 HEAVY SERIES TUBING CLAMPS

## QUICK REFERENCE ORDERING CODES



Tubing	Pipe	I.D. (in)	Carbon Steel Hardware Part No.	316SS Hardware Part No.
1/4"		0.25"	RCPR1-106,4/UNC	RCPR1-106,4/1.4571/UNC
3/8"		0.375"	RCPR1-109,5/UNC	RCPR1-109,5/1.4571/UNC
	1/8"	0.39"	RCPR1-110/UNC	RCPR1-110/1.4571/UNC
1/2"		0.50"	RCPR1-112,7/UNC	RCPR1-112,7/1.4571/UNC
	1/4"	0.53"	RCPR1-113,5/UNC	RCPR1-113,5/1.4571/UNC
5/8"		0.625"	RCPR1-116/UNC	RCPR1-116/1.4571/UNC
	3/8"	0.67"	RCPR1-117,2/UNC	RCPR1-117,2/1.4571/UNC
3/4"		0.75"	RCPR1-219/UNC	RCPR1-219/1.4571/UNC
	1/2"	0.83"	RCPR1-221,3/UNC	RCPR1-221,3/1.4571/UNC
7/8"		0.875"	RCPR1-222/UNC	RCPR1-222/1.4571/UNC
1"		1.0"	RCPR1-225,4/UNC	RCPR1-225,4/1.4571/UNC
	3/4"	1.05"	RCPR1-226,9/UNC	RCPR1-226,9/1.4571/UNC
1 - 1/4"		1.25"	RCPR1-332/UNC	RCPR1-332/1.4571/UNC
	1"	1.32"	RCPR1-333,7/UNC	RCPR1-333,7/1.4571/UNC
1 - 1/2"		1.50"	RCPR1-338/UNC	RCPR1-338/1.4571/UNC
	1 - 1/4"	1.65"	RCPR1-342/UNC	RCPR1-342/1.4571/UNC
1 - 3/4"		1.75"	RCPR1-444,5/UNC	RCPR1-444,5/1.4571/UNC
	1 - 1/2"	1.90"	RCPR1-448,3/UNC	RCPR1-448,3/1.4571/UNC
2"		2.0"	RCPR1-451/UNC	RCPR1-451/1.4571/UNC
2 - 1/4"		2.25"	RCPR1-457/UNC	RCPR1-457/1.4571/UNC
	2"	2.37"	RCPR1-460,3/UNC	RCPR1-460,3/1.4571/UNC
2 - 1/2"		2.50"	RCPR1-463/UNC	RCPR1-463/1.4571/UNC
2 - 3/4"		2.75"	RCPR1-570/UNC	RCPR1-570/1.4571/UNC
	2 - 1/2"	2.87"	RCPR1-573/UNC	RCPR1-573/1.4571/UNC
3"		3"	RCPR1-576,1/UNC	RCPR1-576,1/1.4571/UNC
3 - 1/2"	3"	3.50"	RCPR1-588,9/UNC	RCPR1-588,9/1.4571/UNC
4"		4.0"	RCPR1-6101,6/UNC	RCPR1-6101,6/1.4571/UNC
	4"	4.5"	RCPR1-6114,3/UNC	RCPR1-6114,3/1.4571/UNC
	5"	5.563"	RCPR1-7140/UNC	RCPR1-7140/1.4571/UNC
	6"	6.625"	RCPR1-7168,3/UNC	RCPR1-7168,3/1.4571/UNC
	8"	8.625"	RCPR1-6101,6/UNC	RCPR1-6101,6/1.4571/UNC

## Materials of Construction for above Standard Parts

Components	Carbon Steel Hardware	316SS Hardware
Clamp Body	Polypropylene (Green)	Polypropylene (Green)
Weld Plate	Carbon Steel	316 Stainless Steel
Cover Plate	Carbon Steel	316 Stainless Steel
Bolts	Zinc-Plated	316 Stainless Steel



### Clamp Body Options

- Polypropylene (Green) is standard
- Polyamide (Black)
- Aluminum
- Smooth Bore (Hose)



### Temperature Rating

- Polypropylene: -22F to 212F
- Polyamide: -40F to 248F
- Aluminum: -40F to 572F

# DIN 3015 TWIN SERIES TUBING CLAMPS



## QUICK REFERENCE ORDERING CODES

Tubing	Pipe	Copper Tubing	I.D. (in)	Carbon Steel Hardware Part No.	316SS Hardware Part No.
1/4"			0.25"	RBPR1-106,4/UNC	RBPR1-106,4/1.4571/UNC
3/8"		1/4"	0.375"	RBPR1-109,5/UNC	RBPR1-109,5/1.4571/UNC
	1/8"		0.39"	RBPR1-110/UNC	RBPR1-110/1.4571/UNC
1/2"		3/8"	0.50"	RBPR1-212,7/UNC	RBPR1-212,7/1.4571/UNC
	1/4"		0.53"	RBPR1-213,5/UNC	RBPR1-213,5/1.4571/UNC
5/8"		1/2"	0.625"	RBPR1-216/UNC	RBPR1-216/1.4571/UNC
	3/8"		0.67"	RBPR1-217,2/UNC	RBPR1-217,2/1.4571/UNC
3/4"			0.75"	RBPR1-319/UNC	RBPR1-319/1.4571/UNC
	1/2"		0.83"	RBPR1-321,3/UNC	RBPR1-321,3/1.4571/UNC
7/8"		3/4"	0.875"	RBPR1-322/UNC	RBPR1-322/1.4571/UNC
1"			1.0"	RBPR1-325,4/UNC	RBPR1-325,4/1.4571/UNC
	3/4"		1.05"	RBPR1-426,9/UNC	RBPR1-426,9/1.4571/UNC
		1"	1.125"	RBPR1-428,6/UNC	RBPR1-428,6/1.4571/UNC
1 - 1/4"			1.25"	RBPR1-532/UNC	RBPR1-532/1.4571/UNC
	1"		1.32"	RBPR1-533,7/UNC	RBPR1-533,7/1.4571/UNC
		1 - 1/4"	1.375"	RBPR1-535/UNC	RBPR1-535/1.4571/UNC
1 - 1/2"			1.50"	RBPR1-538/UNC	RBPR1-538/1.4571/UNC
		1 - 1/2"	1.625"	RBPR1-541,3/UNC	RBPR1-541,3/1.4571/UNC
	1 - 1/4"		1.65"	RBPR1-542/UNC	RBPR1-542/1.4571/UNC

## Materials of Construction for above Standard Parts

Components	Carbon Steel Hardware	316SS Hardware
Clamp Body	Polypropylene (Green)	Polypropylene (Green)
Weld Plate	Carbon Steel	316 Stainless Steel
Cover Plate	Zinc-Plated	316 Stainless Steel
Bolts	Zinc-Plated	316 Stainless Steel



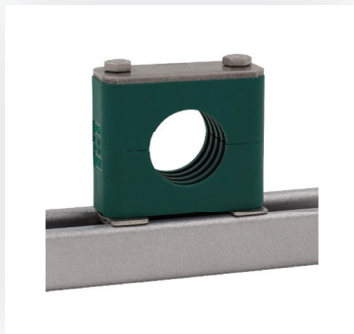
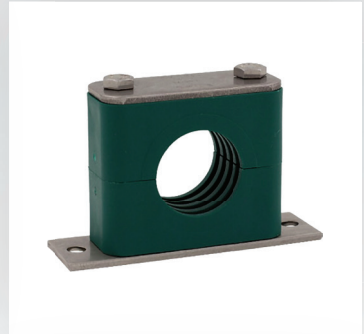
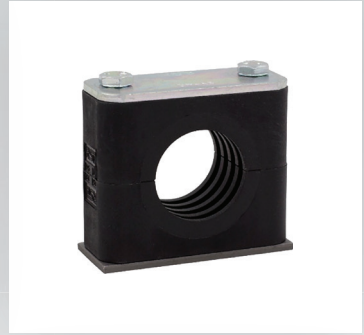
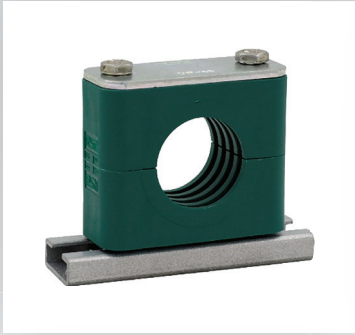
### Clamp Body Options

- ✔ Polypropylene (Green) is standard
- ✔ Polyamide (Black)
- ✔ Aluminum
- ✔ Smooth Bore (Hose)




### Temperature Rating

- ✔ Polypropylene: -22F to 212F
- ✔ Polyamide: -40F to 248F
- ✔ Aluminum: -40F to 572F



 1-888-979-0811

 [sales@alabamaindustrialproducts.com](mailto:sales@alabamaindustrialproducts.com)

 [www.alabamaindustrialproducts.com](http://www.alabamaindustrialproducts.com)