

CAPE MADRAS

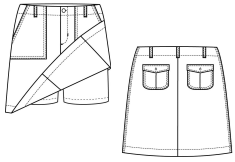
www.capemadras.com

Portland, Maine

207-799-0017

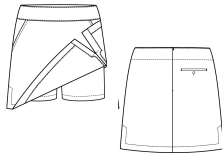
contact@capemadras.com

#W17 - GOLF SKORT



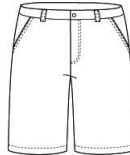
Natural waist, 19" length
Front zipper, 4 pockets
Missy fit
WHSL PRICE: \$62.00
Sizes: 0-16

#W27 - SPORT SKORT



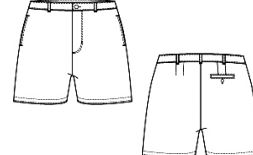
Natural waist, 18" length
Back zipper, 3 pockets
A-line shape
WHSL PRICE: \$62.00
Sizes: 0-16

#W05 - LADIES BERMUDAS



Natural waist, Fully lined
19" Length, 3 pockets
Generous cut, Missy fit
WHSL PRICE: \$58.00
Sizes: 0-16

#W04 - CAMP SHORTS



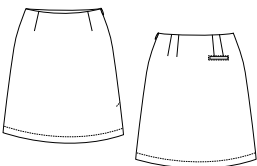
Mid-rise, 17" length
3 pockets, 7" inseam
WHSL PRICE: \$52.00
Sizes: 0-16

#W29 - JENNA SHORTS



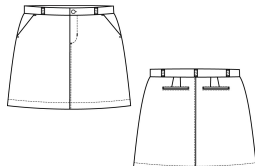
Low-rise 5" inseam
13" length
Front zipper, 4 pockets
WHSL PRICE: \$50.00
SIZES: 0 - 12

#W06 - 21 SKIRT



Natural waist, fully lined
no waistband
21" length with an invisible
side zipper
WHSL PRICE: \$6.00
SIZES: 0-16

#W02 - FUN SKIRT



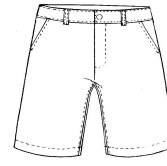
Mid-rise, sits a bit
below the waist
16.5" length with front
zipper and 4 pockets
WHSL PRICE: \$50.00
SIZES: 0-16

#W31 - KATIE SHIRT



3/4 length sleeve
Shirt tail hem
WHSL PRICE: \$58.00
SIZES: XS-XXL

#M01 - MEN'S SHORTS



Classic fit
Flat front, Fully lined
21" length, 10" inseam
4 Pockets
WHSL PRICE: \$58.00
SIZES: 32 - 42

#M10 - MEN'S LS SHIRT



Long sleeve button down
Classic generous cut
Lightweight fabric
WHSL PRICE: \$66.00
SIZES: XS-XXL



#85 - St. Tropez



#16 - Cannes



#90 - Crescent



#51 - Cape



#25 - Lenox



#75 - Westwood



#81 - Amherst



#77 - Surf



#24 - Stockbridge



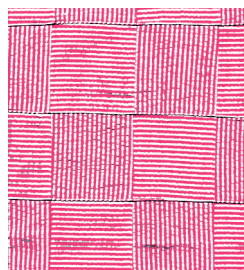
#17 - Vail



#18 - Berkshire



#22 - Blue Seer



#34 - Pink Seer



#42 - Khaki Seer



#38 - Aspen