

Plastic Lever Pump

PLP-02



Lever action drum pump, designed for use with high viscosity oils, agricultural chemicals etc.

Pump design makes it extremely convenient & comfortable to pump thick oils without excessive fatigue

Choice of materials used in the pump construction, make it versatile for use with water based media, as well as select chemicals

Built-In 2" Bung Adaptor

Allows the pump to be fixed on drums with 2" opening

Pump position can be adjusted using the lock nut incorporated in the pump body

Pump outlet is fitted with an air vent cap which when loosened breaks the siphon action

Complete with

- Suction tube for use with 50-205 litres (15-55 gallons) drums

- 2m x 3/4" flexible corrugated discharge hose

Also available with Tri-sure adaptor - making the pump suitable for use on plastic drums with buttress threads

WETTED COMPONENTS

Polyacetal, polypropylene, Polyethylene, PVC & Viton

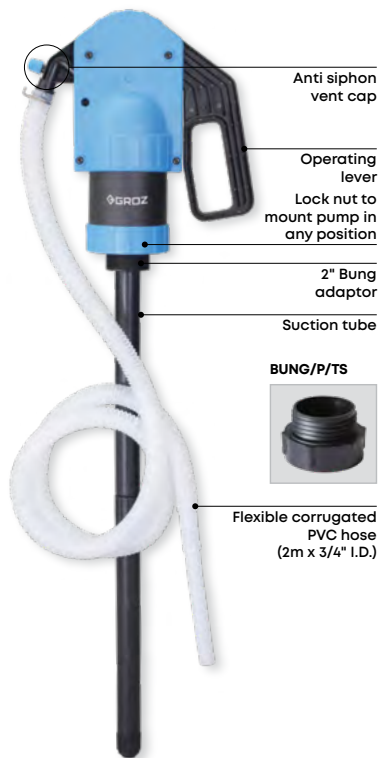
RECOMMENDED USE

Water-based media, Detergents, Soaps, Antifreeze, Windshield washer, Hydraulic oils, Lubricants, Herbicides & Pesticides, Urea, DEF etc. Pump should only be used with Non-flammable liquids

DO NOT USE WITH

Flammable media & media not compatible with materials used in the pump construction

These pumps must never be used for fuel transfer or with thinners, solvents etc.

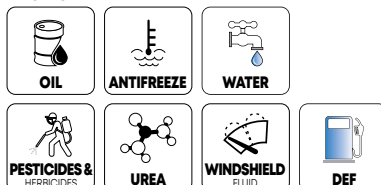


SPECIFICATIONS

| | | |
|---------------------|-------------------------|-------------------------|
| Flow Rate | UPTO 500 ML / STROKE | UPTO 1 PINT / STROKE |
| Working Temperature | -5°C TO 45°C | 23°F TO 113°F |

| CAT NR. | DESCRIPTION |
|-----------|---|
| PLP/02 | Pump with 2" bung adaptor |
| PLP/02T | Pump with 2" bung adaptor & tri sure adaptors |
| BUNG/P/TS | Spare tri sure adaptor |

FLUIDS



SAFETY INFORMATION

- Keep the work area clean and dry. Damp or wet work areas can result in injury.
- When not in use, tools and equipment should be stored in a dry location to inhibit rust and keep out of reach of children.
- Use the right tool for the job. Do not modify this equipment.
- Check for damaged parts. Before using this product, replace damaged or worn parts immediately

WARNING!

- Read carefully all the safety guidelines and the instructions.
- Failure to follow all instructions listed above may result in Improper functioning of pump and can cause serious injury.

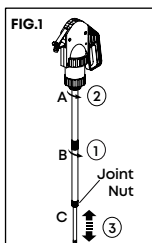
PACKAGE CONTENT

| DESCRIPTION | QUANTITY |
|----------------|----------|
| Pump Body | 1 |
| Suction Tube | 2 |
| Discharge Hose | 1 |
| O.I.P.M | 1 |

HOW TO ASSEMBLE SUCTION PIPES

(Refer to Fig. 1)

1. Thread Suction Pipe B into Suction Pipe A. (1)



2. Thread Suction Pipe A+B into Suction Thread Hole. (2)
3. Adjust the length of Suction Pipe C to fit it with the height of the Drum Can and fix pipes B+C with Joint Nut. (3)
4. Length of Assembled Suction Pipes
 - Suction Pipes(A+B+C) : 690 - 980 mm
 - Suction Pipes(B+C) : 350 - 640 mm

INSTALLATION

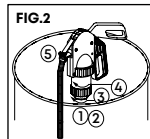
(refer to fig. 2)

1. Pump comes with a two piece Suction tube. One tube is Telescopic (B+C) in nature & should be used when using the pump on smaller 15-50 litre (5-16 gal.) drums. When using the pump with 205 litre (55 gal.) drums

assemble the other suction tube (A) with the telescopic suction tube (B+C) & extend it fully.

Note: Tighten the connections gently so as not to shear the threads.

2. Now screw the Suction tube to the 3/4" female threaded opening at the pump inlet. (1)



3. Insert the complete pump assembly (Pump & Suction Tube together) into the drum from the 2" threaded opening on the drum. (2)
4. Tighten the 2" Bung Threads on the pump onto the threaded opening on the drum. (3)
5. Pump has a Built-in Lock Nut which can be turned & used to position the pump outlet on the drum. (4)
6. Connect the Corrugated discharge hose using the Hose Clip onto the Pump Outlet. (5)

OPERATING INSTRUCTIONS

(refer to fig. 3)

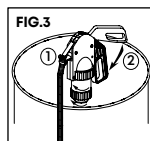
1. Loosen the Anti Siphon Vent Cap on the Pump outlet if you wish to manually operate the pump. If Siphon action is desired, tighten the cap fully. (1)

2. Start operating the pump handle, making sure that the corrugated discharge tube has its end in the receiving container. (2)

Note: Be careful not to spill the liquid on the ground when pumping the liquid into the receiving container.

3. Within a few strokes, pump will start dispensing media.

Note: Operate the handle smoothly to prevent the pump head from getting damaged.



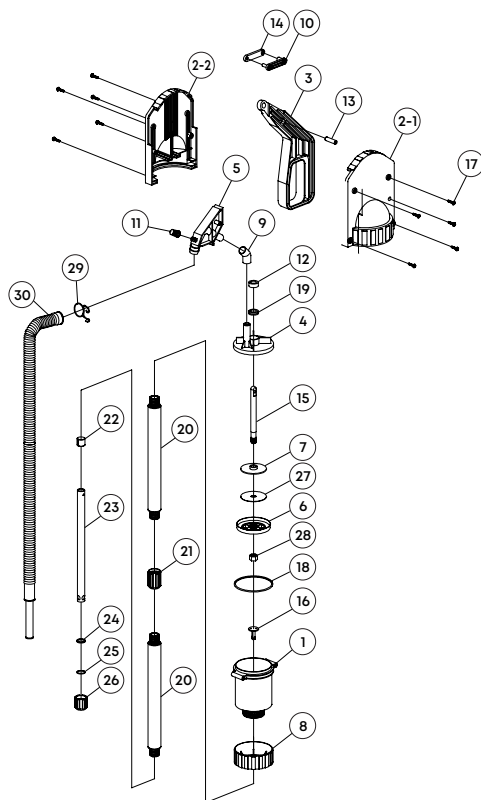
4. If the Anti-siphon vent cap is in the fully closed position, pump will keep dispensing even without operating the pump handle until the media level in the supply container becomes equal to the media level in the receiving container. Siphon action can at any time be stopped by opening the anti siphon vent cap.

Priming

Close the anti-siphon vent cap and move the handle up and down rapidly until the fluid starts pouring out of the dischargetube.

Note: For best results, pump should be used for pumping only one type of media.

EXPLODED VIEW



PARTS LIST

| REF NO. | PARTS DESCRIPTION | QUANTITY |
|---------|-------------------|----------|
| 1 | Barrel | 1 |
| 2-1 | Top Cover 'A' | 1 |
| 2-2 | Top Cover 'B' | 1 |
| 3 | Handle | 1 |
| 4 | Cap | 1 |
| 5 | Spout | 1 |
| 6 | Piston | 1 |
| 7 | Piston Clacker | 1 |
| 8 | Lock Nut | 1 |
| 9 | Spout Connector | 1 |
| 10 | Crank | 1 |
| 11 | Air Vent Cap | 1 |
| 12 | Guide Bush | 1 |
| 13 | Pivot Pin | 1 |
| 14 | Crank Plate | 1 |
| 15 | Shaft | 1 |

| REF NO. | PARTS DESCRIPTION | QUANTITY |
|---------|-------------------|----------|
| 16 | Inlet Valve | 1 |
| 17 | PT Screw | 10 |
| 18 | Barrel Seal | 1 |
| 19 | Shaft Seal | 1 |
| 20 | Pipe 'A' | 2 |
| 21 | Connector | 1 |
| 22 | Pipe Ring | 1 |
| 23 | Pipe 'B' | 1 |
| 24 | Ring | 1 |
| 25 | Pipe Seal | 1 |
| 26 | Joint Nut | 1 |
| 27 | PP Disc | 1 |
| 28 | Nut (M12) | 1 |
| 29 | Hose Clip | 1 |
| 30 | Discharge Hose | 1 |
| 31 | Pipe C | 1 |



TROUBLESHOOTING

(Refer "EXPLODED VIEW")

| PROBLEM | CAUSE | SOLUTION |
|---------------------------|-----------------------------|---|
| Pump not dispensing media | The pump needs to be primed | Refer to "Priming" section |
| Less discharge | Pump is drawing in air | <ol style="list-style-type: none">1. Check whether the anti siphon vent cap is tighten on the spout2. Tighten the suction tubes onto the barrel inside threads |

DISPOSAL

The components or the used products must be given to companies that specialize in the disposal and recycling of industrial waste.

GROZ WARRANTY POLICY

Groz makes all efforts to ensure that its products meet the highest standards of quality and durability and warrants to the original purchaser its range of products for a period of 12 months from Groz Invoice date, against defects in materials and workmanship. If the Groz product is part of a set, only the portion that is defective is subject to this warranty.

This warranty does not apply to damage due directly or indirectly, to misuse, abuse, wear and tear, negligence or accident, repairs or alterations outside Groz plants, or to lack of maintenance. Groz shall in no event be liable for death, injuries to persons or property or for incidental, contingent, special or consequential damages arising from the use of its products. It is upto the user to determine suitability and safety of the product for their intended use, and the user assumes all risks and liability herewith.

In no event, shall Groz's liability exceed the invoiced cost of the product. In case of identification of defect covered under this warranty, the same must be notified in writing to Groz /Groz designated authorized service location. Proof of purchase date must accompany the complaint. Groz reserves the right to call back the faulty unit, all charges including transportation prepaid. On verification of the defect, the unit will be repaired or replaced with a new or reconditioned product or part of equal utility or a full refund given at Groz's discretion. The repaired /replaced units will be returned to the user freight prepaid, using most economical freight carrier. However if determined that the defect resulted from causes not within the scope of the warranty, then the cost of returning the product would be to buyer's account.

Groz Engineering Tools Pvt. Ltd. Groz Net Industries

Village Kherki Daula, National Highway-8,
Gurugram-122001, Haryana, INDIA

Tel +91.124.282.7700

E-Mail info@groz-tools.com

Url www.groz-tools.com

The GROZ name, GROZ logo and the  mark are trademarks of GROZ Engineering Tools Pvt. Ltd., India