



GROZ



INDESTRUCTIBLE HANDLE HAMMERS

Never replace a hammer again!

INDESTRUCTIBLE HANDLE HAMMERS



**Outlasts wood
& fibreglass
handle
hammers by
thousands of
overstrikes!**



STEEL LOCKING PLATE

locks head to the handle
eliminating loosening or
dislodging

HI-VISIBILITY HEAD

instant identification on
any job site

VULCANIZED RUBBER HANDLE

Absorbs impact &
vibration, reducing user
fatigue

Protects user in the event
of striking an electrical wire

Made from special grade
of ozone resistant rubber
for use in tough outside
environments

Handles on most head sizes
weigh more than the head,
allowing user to apply
double the torque on any
struck surface

DROP FORGED HEAD

with striking
ends induction
hardened
(50-58 HRC)

SPRING STEEL BARS

9/32" (7.1 mm) dia.
spring steel bars
resist overstrike
without breaking

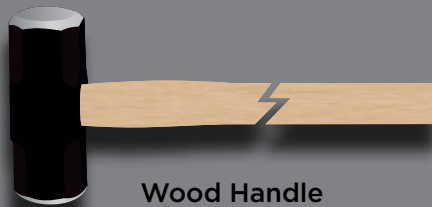
STEEL REINFORCED LANYARD HOLE



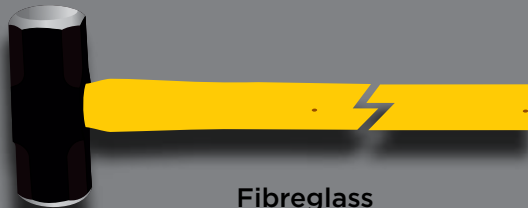
OUTSTANDING DURABILITY

In our desire to build the world's strongest Sledge Hammer, we tested our Indestructible Handle Sledge Hammer against Sledges with different handles. We attached each Sledge to an Electronic drive machine & tested for both Direct & Overstrikes at a strike rate of 80 blows per minute

DIRECT STRIKE TEST



Wood Handle
broke in 450
Strikes

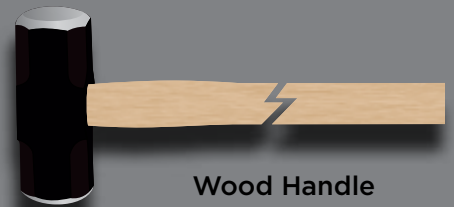


Fibreglass
Handle broke in
7,000 Strikes



GROZ Indestructible
Handle Hammers
recorded 36,000 blows,
with no indication of
deformation

OVERSTRIKE TEST



Wood Handle
broke in 208
Overstrikes



Fibreglass
Handle
broke in 4,126
Overstrikes



GROZ Indestructible
Handle Hammers
recorded 36,000 blows,
with no indication of
deformation

WE STOPPED
COUNTING AFTER

36,000
STRIKES

INDESTRUCTIBLE
HANDLE
GROZ

7,000

STRIKES
ON FIBRE
GLASS
HANDLE

450

STRIKES
ON WOODEN
HANDLE

THE RESULT

The GROZ Indestructible Handle Hammers come with a 12 month warranty from Invoice Date. These are designed to ensure that the hammer handle will not break/separate from the hammer head under normal wear & tear. Warranty does not cover use of the hammer other than as a hand-held striking tool, nor to breakage/ mushrooming etc. of the hammer head

Indestructible handle is made up of 4 spring steel bars that run all the way through the handle.

Bars are locked with the hammer head using steel locking plates ensuring that the head never gets dislodged.

Ergonomic rubber grip handle absorbs vibration and reduces fatigue.

Special bonding process ensures that the head never gets loose from the handle.

These are available in 2 types:

Heavy Duty 50-58 HRC Head*

Forged from special steel, the hammer head is induction case hardened 50-58 HRC. These hammers are especially useful in demolition work where the struck surface is softer than the hammer head

UTILITY

- Driving in stakes
- Metal-forming
- Setting bolts
- Minor demolition work

Soft Face 30 HRC Head

Forged from special steel, the hammer head is induction case hardened & then tempered to reduce hardness to within 30-35 HRC. Softer head is designed to mushroom when striking harder base materials. Prevents damage to struck work pieces

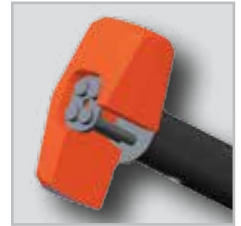
UTILITY

- Construction
- Metal forming
- Over ground mining
- Maintenance of cutting tools

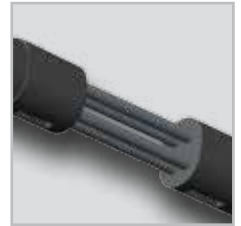


Heavy Duty
52 HRC Head

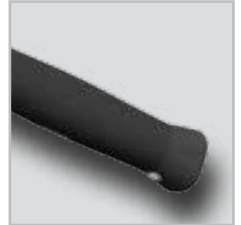
Soft Face
30 HRC Head



Steel Locking Plate



4 Spring Steel Bars



Ergonomic Rubber Grip Handle

WARNING*

Do not strike objects harder than 46 HRC. Striking items of a greater hardness is liable to cause fracture or chipping

ORDERING INFORMATION

CAT NR.	ORD NR.	HEAD WEIGHT		HANDLE LENGTH	
		lbs	kg	inch	mm
HEAVY DUTY 52 HRC HEAD					
CHID/2.5/12	34500	2.5	1.1	12	300
CHID/2.5/16	34505	2.5	1.1	16	400
CHID/4/12	34501	4	1.8	12	300
CHID/4/16	34502	4	1.8	16	400
SOFT FACE 30 HRC HEAD					
CHID/SF/2.5/12	34550	2.5	1.1	12	300
CHID/SF/4/12	34551	4	1.8	12	300

BS 876

For material, hardness & performance

SANS 387:2014



WORKING TEMPERATURE RANGE

-10°C TO 50°C
(14°F TO 122°F)

02

Sledge Hammers

SHID

Indestructible handle is made up of 6 spring steel bars that run all the way through the handle.

Bars are locked with the hammer head using steel locking plates ensuring that the head never gets dislodged.

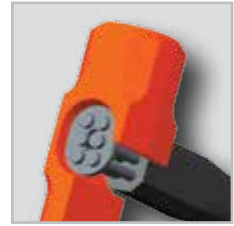
Ergonomic rubber grip handle absorbs vibration and reduces fatigue.

Special bonding process ensures that the head never gets loose from the handle.

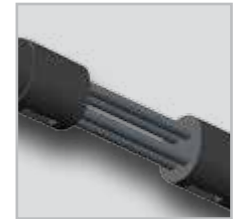


Heavy Duty
52 HRC Head

Soft Face
30 HRC Head



Steel Locking Plate



6 Spring Steel Bars



Ergonomic Rubber Grip Handle

These are available in 2 types:

Heavy Duty 50-58 HRC Head*

Forged from special steel, the hammer head is induction case hardened 50-58 HRC. These hammers are especially useful in demolition work where the struck surface is softer than the hammer head. These are also available with a short handle (12-16" length), especially useful in automotive applications

UTILITY

- Driving in stakes
- Heavy demolition work
- Construction: fracturing stone & concrete
- Driving fence posts
- Police, fire & rescue
- Rebar work
- Railroads
- Bending & shaping metal

Soft Face 30 HRC Head:

Forged from special steel, the hammer head is induction case hardened & then tempered to reduce hardness to within 30-35 HRC. Softer head is designed to mushroom when striking harder base materials. Prevents damage to struck work pieces.

UTILITY

- Construction
- Agriculture
- Automotive
- Overground mining
- Railroad
- Maintenance of cutting tools

BS 876

For material, hardness & performance

SANS 387:2014



ORDERING INFORMATION

CAT NR.	ORD NR.	HEAD WEIGHT		HANDLE LENGTH	
		lbs	kg	inch	mm
HEAVY DUTY 52 HRC HEAD					
SHID/6/16	34521	6	2.7	16	400
SHID/6/24	34510	6	2.7	24	600
SHID/6/30	34511	6	2.7	30	750
SHID/8/12	34522	8	3.6	12	300
SHID/8/16	34523	8	3.6	16	400
SHID/8/24	34512	8	3.6	24	600
SHID/8/30	34513	8	3.6	30	750
SHID/8/36	34517	8	3.6	36	900
SHID/10/30	34514	10	4.5	30	750
SHID/10/36	34518	10	4.5	36	900
SHID/12/30	34515	12	5.5	30	750
SHID/12/36	34519	12	5.5	36	900
SHID/14/30	34516	14	6.3	30	750
SHID/14/36	34520	14	6.3	36	900

WARNING*

Do not strike objects harder than 46 HRC. Striking items of a greater hardness is liable to cause fracture or chipping

WORKING TEMPERATURE RANGE

-10°C TO 50°C
(14°F TO 122°F)

CAT NR.	ORD NR.	HEAD WEIGHT		HANDLE LENGTH	
		lbs	kg	inch	mm
SOFT FACE 30 HRC HEAD					
SHID/SF/6/30	34560	6	2.7	30	750
SHID/SF/8/30	34561	8	3.6	30	750
SHID/SF/10/30	34562	10	4.5	30	750
SHID/SF/12/30	34563	12	5.5	30	750
SHID/SF/14/36	34565	14	6.3	36	900

NEW!

Indestructible handle is made up of 6 spring steel bars that run all the way through the handle.

Forged steel head is induction case hardened 50-58 HRC.

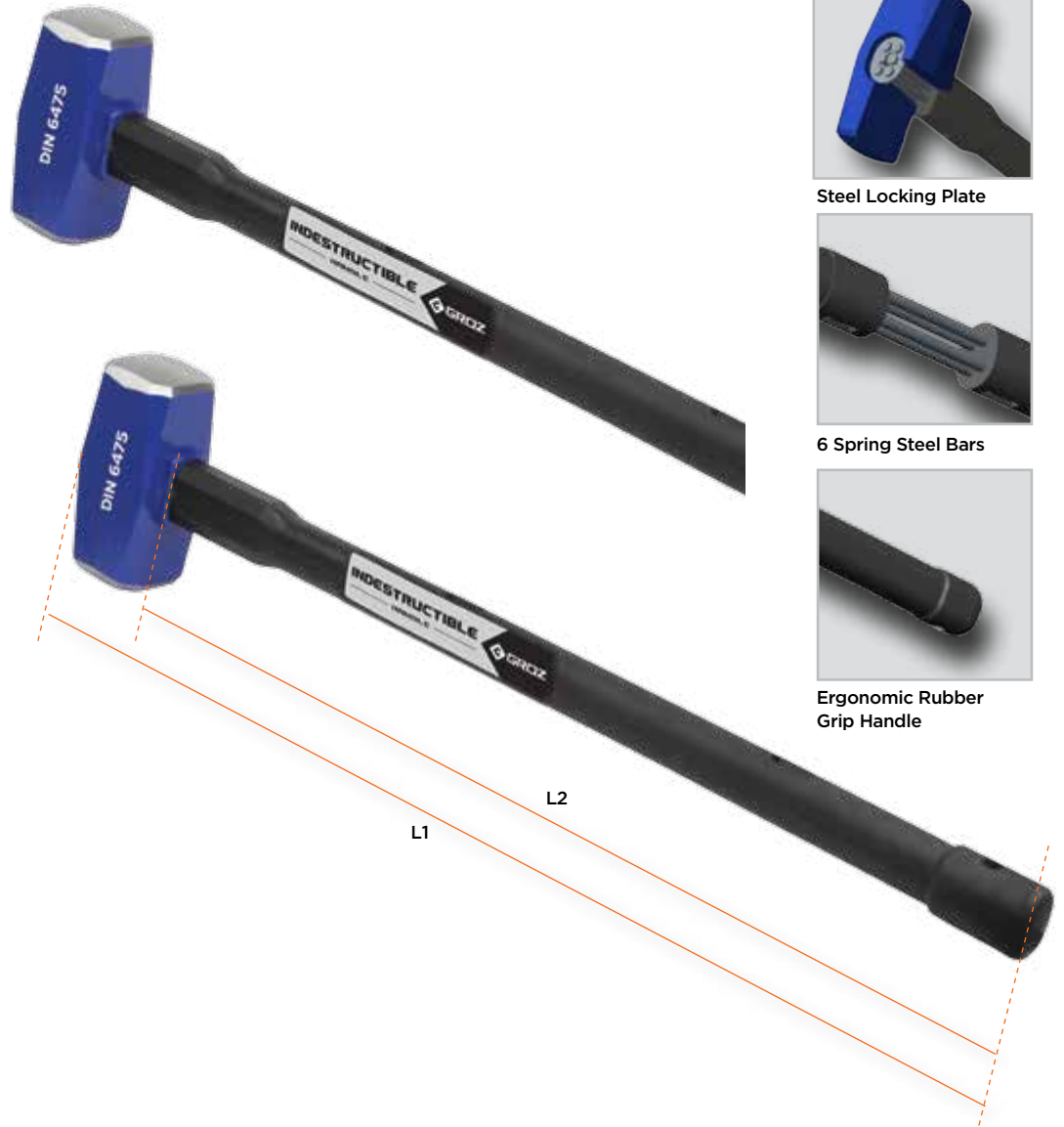
Bars are locked with the hammer head using steel locking plates ensuring that the head never gets dislodged.

Ergonomic rubber grip handle absorbs vibration and reduces fatigue.

Special bonding process ensures that the head never gets loose from the handle.

UTILITY

- Demolition
- Driving stakes & rebar
- Fracturing stone & concrete
- Driving fence posts
- Rail road
- Bending & shaping metal



CONFORMS TO
DIN 6475

WARNING

Do not strike objects harder than 46 HRC. Striking items of a greater hardness is liable to cause fracture or chipping

ORDERING INFORMATION

CAT NR.	ORD NR.	HEAD WEIGHT		HANDLE LENGTH			
				L1		L2	
		gms	kg	inch	mm	inch	mm
SHID/DIN/3K/24	34720	3000	3	24	600	22	550
SHID/DIN/5K/30	34721	5000	5	30	750	28	695

WORKING TEMPERATURE RANGE
-10°C TO 50°C
(14°F TO 122°F)

04

Copper Head Sledge Hammers

CHID-CU

SHID-CU

Indestructible handle is made with spring steel bars that run all the way through the handle.

Bars are locked with the hammer head using steel locking plates ensuring that the head never gets dislodged.

Ergonomic rubber grip handle absorbs shock & vibration reducing fatigue.

Special bonding process ensures that head never gets loose from the handle.

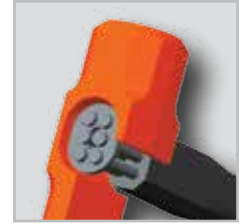
Hammer head is forged from 99.9% pure copper for spark free use. Copper head resists sparking & reduces marring of most struck surfaces

UTILITY

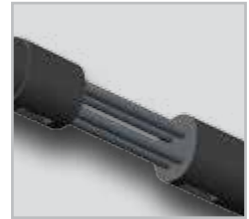
- Metal forming
- Mining
- Underground coal mining



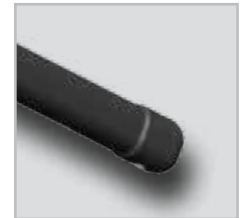
Spark Resistant!






Steel Locking Plate



4 - 6 Spring Steel Bars



Ergonomic Rubber Grip Handle

MATERIAL	HARDNESS	NON SPARKING	NON MARRING
Cu COPPER	 85 HV		

ORDERING INFORMATION

CAT NR.	ORD NR.	HEAD WEIGHT		HANDLE LENGTH	
		lbs	kg	inch	mm
CHID/2.5/12/CU	34602	2.5	1.1	12	300
CHID/2.5/16/CU	34603	2.5	1.1	16	400
CHID/4/12/CU	34600	4	1.8	12	300
CHID/4/16/CU	34604	4	1.8	16	400
SHID/8/24/CU	34610	8	3.6	24	600
SHID/14/30/CU	34611	14	6.3	30	750

WORKING TEMPERATURE RANGE

-10°C TO 50°C
(14°F TO 122°F)

Indestructible handle is made with spring steel bars that run all the way through the handle.

Bars are locked with the hammer head using steel locking plates ensuring that the head never get dislodged

Ergonomic rubber grip handle absorbs shocks & vibration hence reducing fatigue

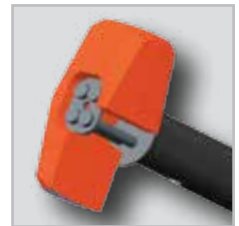
Drop forged brass head is spark resistant. It absorbs impact & reduces damage on the surface being hit. Also it can be used safely in combustible environments

UTILITY

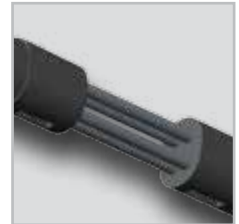
- Oil Rigs
- Gas Industry
- Automotive applications where the struck surface is soft



Mar Resistant Head



Steel Locking Plate



4 Spring Steel Bars



Ergonomic Rubber Grip Handle

MATERIAL	HARDNESS	NON SPARKING	NON MARRING
Br BRASS	 130 HV		

ORDERING INFORMATION

CAT NR.	ORD NR.	HEAD WEIGHT		HANDLE LENGTH	
		lbs	kg	Inch	mm
SHID/2.5/12/BR	34700	2.5	1.1	12	300
SHID/2.5/16/BR	34701	2.5	1.1	16	400
SHID/4/12/BR	34702	4	1.8	12	300
SHID/4/16/BR	34703	4	1.8	16	400

WORKING TEMPERATURE RANGE

-10°C TO 50°C
(14°F TO 122°F)

Indestructible handle is made up of 2 spring steel bars that run all the way through the handle.

Forged steel head is induction case hardened 50- 58 HRC.

Head features an octagonal face with bevelled edges & a 45° angular cross pein

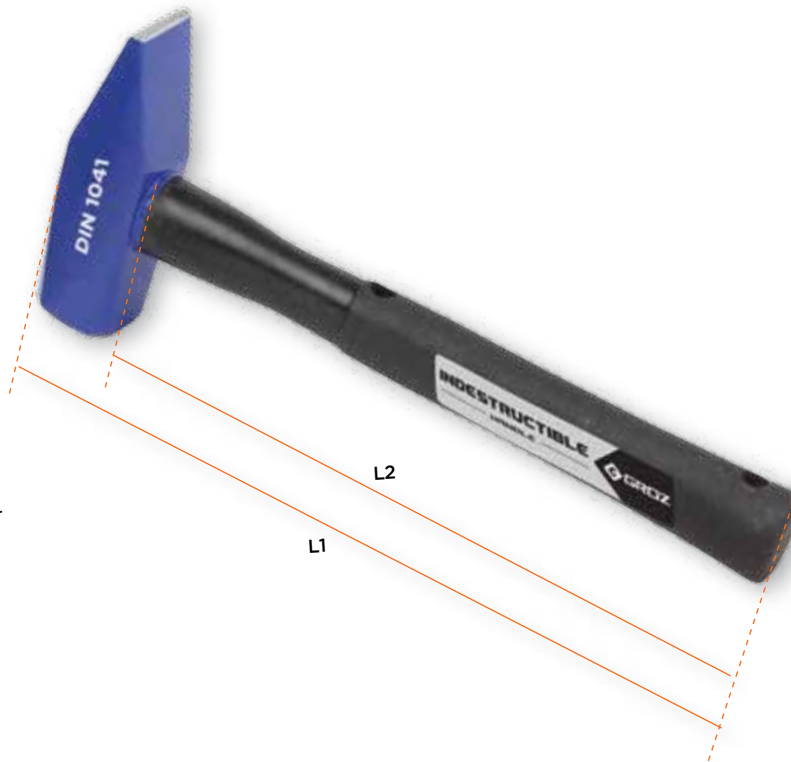
Bars are locked with the hammer head using steel locking plates ensuring that the head never gets dislodged.

Ergonomic rubber grip handle absorbs vibration and reduces fatigue.

Special bonding process ensures that the head never gets loose from the handle.

UTILITY

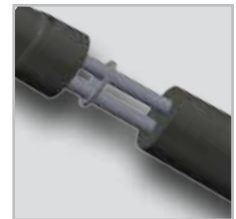
- Riveting
- Forging
- Shaping & flattening of metal
- Embossing
- Removal of dents
- Jewellery application



NEW!



Steel Locking Plate



2 Spring Steel Bars



Ergonomic Rubber Grip Handle

CONFORMS TO

DIN 1041

WARNING

Do not strike objects harder than 46 HRC. Striking items of a greater hardness is liable to cause fracture or chipping

ORDERING INFORMATION

CAT NR.	ORD NR.	HEAD WEIGHT		HANDLE LENGTH			
				L1		L2	
		gms	kg	Inch	mm	inch	mm
MHID/DIN/300G/13	34710	300	0.3	13	330	12	300
MHID/DIN/500G/13	34711	500	0.5	13	330	12	300
MHID/DIN/800G/14	34712	800	0.8	14	350	12-19/32	320
MHID/DIN/1000G/14	34713	1000	1	14	350	12-19/32	320

WORKING TEMPERATURE RANGE

**-10°C TO 50°C
(14°F TO 122°F)**

Indestructible 14" (350 mm) long handle is made with spring steel bars that run all the way through the handle.

Bars are locked with the hammer head using steel locking plates ensuring that the head never gets dislodged.

Ergonomic rubber grip handle absorbs shock & vibration reducing fatigue. Special bonding process ensures that head never gets loose from the handle.

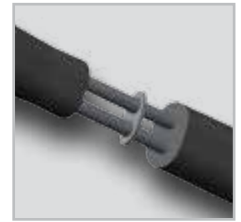
Hammer head is forged from special steel and is induction case hardened to 50-58 HRC for extended life.

UTILITY

- Bending & shaping metal
- Driving punches & chisels
- Concrete & stone work
- Hand forging
- Setting rivets
- Peen riveted & welded material
- Texturing face of metal



Steel Locking Plate



2 Spring Steel Bars



Ergonomic Rubber Grip Handle

WARNING

Do not strike objects harder than 46 HRC. Striking items of a greater hardness is liable to cause fracture or chipping

ORDERING INFORMATION

CAT NR.	ORD NR.	HEAD WEIGHT		HANDLE LENGTH	
		gms	oz	inch	mm
BPID/24/14	34540	680	24	14	350
BPID/32/14	34541	900	32	14	350
BPID/48/14	34542	1360	48	14	350

BS 876

For material, hardness & performance



WORKING TEMPERATURE RANGE

-10°C TO 50°C
(14°F TO 122°F)

Indestructible 16" (400 mm) long handle is made with 4 spring steel bars that run all the way through the handle.

Bars are locked with the hammer head using steel locking plates ensuring that the head never gets dislodged.

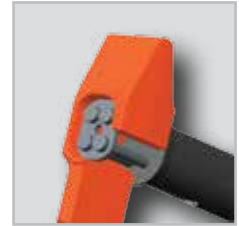
Ergonomic rubber grip handle absorbs shock & vibration reducing fatigue.

Special bonding process ensures that head never gets loose from the handle.

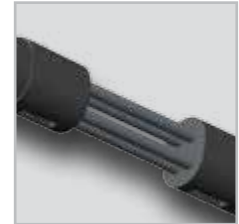
Hammer head is forged from special steel & is induction case hardened to 50-58 HRC for extended life

UTILITY

- Heavy Forging
- Bending & Shaping Metal
- Spreading Metal
- Driving Punches & Chisels
- Driving Masonry Drills
- Concrete & Stone Work
- Starting Panel Pins & Tacks



Steel Locking Plate



4 Spring Steel Bars



Ergonomic Rubber Grip Handle

WARNING

Do not strike objects harder than 46 HRC. Striking items of a greater hardness is liable to cause fracture or chipping

ORDERING INFORMATION

CAT NR.	ORD NR.	HEAD WEIGHT		HANDLE LENGTH	
		lbs	kg	Inch	mm
CPID/2/16	34530	2.5	1.15	16	400
CPID/3/16	34531	3.5	1.60	16	400



WORKING TEMPERATURE RANGE

-10°C TO 50°C
(14°F TO 122°F)

Indestructible 13" (330 mm) long handle is made with 2 spring steel bars that run all the way through the handle.

Bars are locked with the hammer head using steel locking plates ensuring that the head never gets dislodged

Hammer Head is forged from special steel & induction case hardened 50-58 HRC for extended life

Well shaped, curved claw is tapered for maximum grip & higher leverage when gripping a nail

Special bonding process ensures that the head never gets loose from the handle

Ergonomic rubber grip handle absorbs shock & vibration reducing fatigue

UTILITY

- Pulling Out Nails
- Lifting Floorboards
- Carpentry Work



NEW!



Steel Locking Plate



2 Spring Steel Bars



Ergonomic Rubber Grip Handle

WARNING

Do not strike objects harder than 46 HRC. Striking items of a greater hardness is liable to cause fracture or chipping

Do not use a claw hammer for striking cold chisels or for pulling out masonry nails

ORDERING INFORMATION

CAT NR.	ORD NR.	HEAD WEIGHT		HANDLE LENGTH	
		oz	gms	inch	mm
CLID/16/13	34535	16	450	13	330

BS 876
For material, hardness & performance



WORKING TEMPERATURE RANGE

-10°C TO 50°C
(14°F TO 122°F)

MERCHANDISING SOLUTIONS

D7

3 pc Club &
Sledge Hammer
wooden display
stand



CAT NR.	ORD NR.	STAND DIMENSIONS	
		inch	mm
D7	00506	16.14 x 5.91 x 3.74	410 x 150 x 95

Supplied without
hammers

D12

All metal display
stand for displaying
16 hammers

Top & bottom
display / branding
area

Easy to bolt
assembly

Supplied in CKD
form



CAT NR.	ORD NR.	STAND DIMENSIONS	
		inch	mm
D12	00512	18.11 x 53.93 x 23.62	460 x 1370 x 600

Supplied without
hammers

**SCAN ME
TO VISIT
WEBSITE**



**Groz Engineering Tools (P) Ltd.
Groz Net Industries**

Village Kherki Daula, National Highway-8
Gurgaon-122001, Haryana, INDIA

TEL +91.124.282.7734 / 2827740 / 2827777
FAX +91.124.2827980 / 2827986
E-MAIL info@groz-tools.com
URL www.groz-tools.com

Whilst every effort has been made to ensure accuracy of information given in this catalogue at the time of going to print, Feb 2016, our policy of continuous improvement determines the right to change specifications without notice. Customers must ensure that goods are suitable for the purpose intended.