



ILLUSTRATED PARTS BOOK

25 Ton Log Splitter

PLS20825

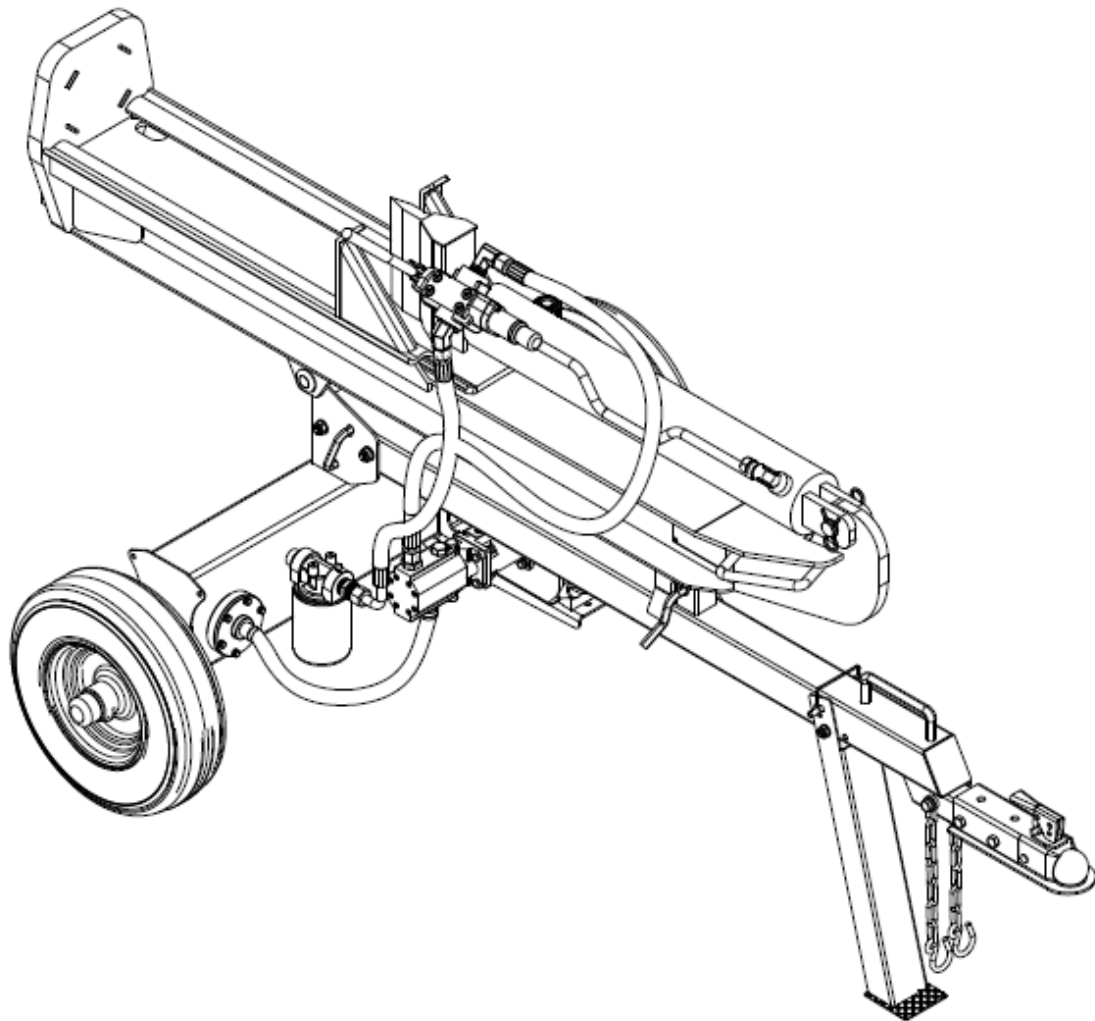
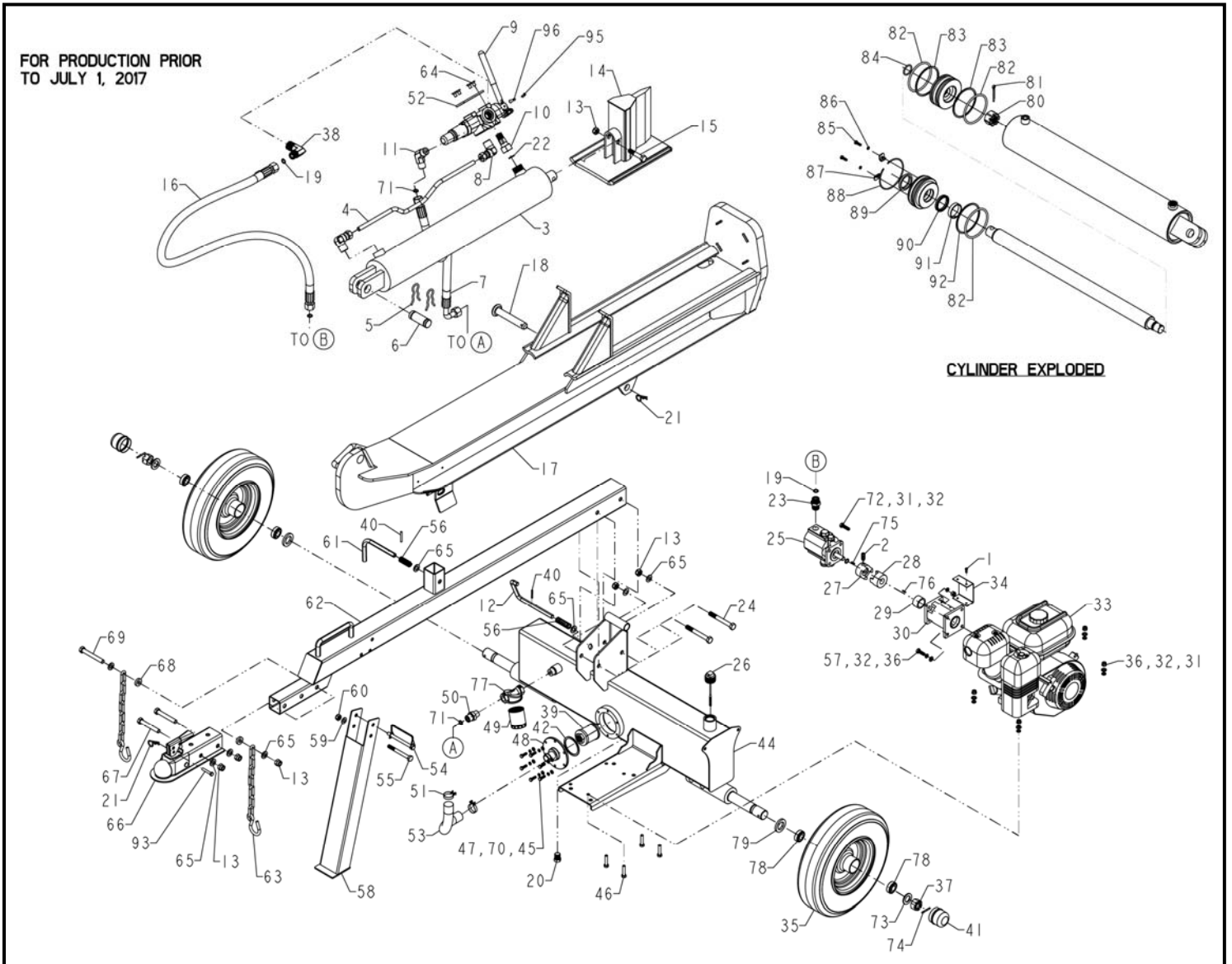


Table of Contents

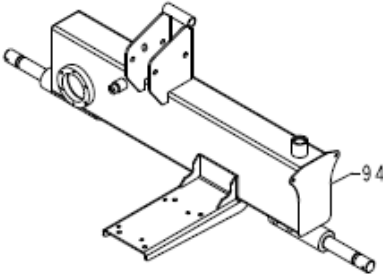
Unit Assembly	2-5
Kits	6
Decal Kit	7

Unit Assembly



Unit Assembly (continued)

FOR PRODUCTION AFTER
JULY 1, 2017



Unit Assembly (continued)

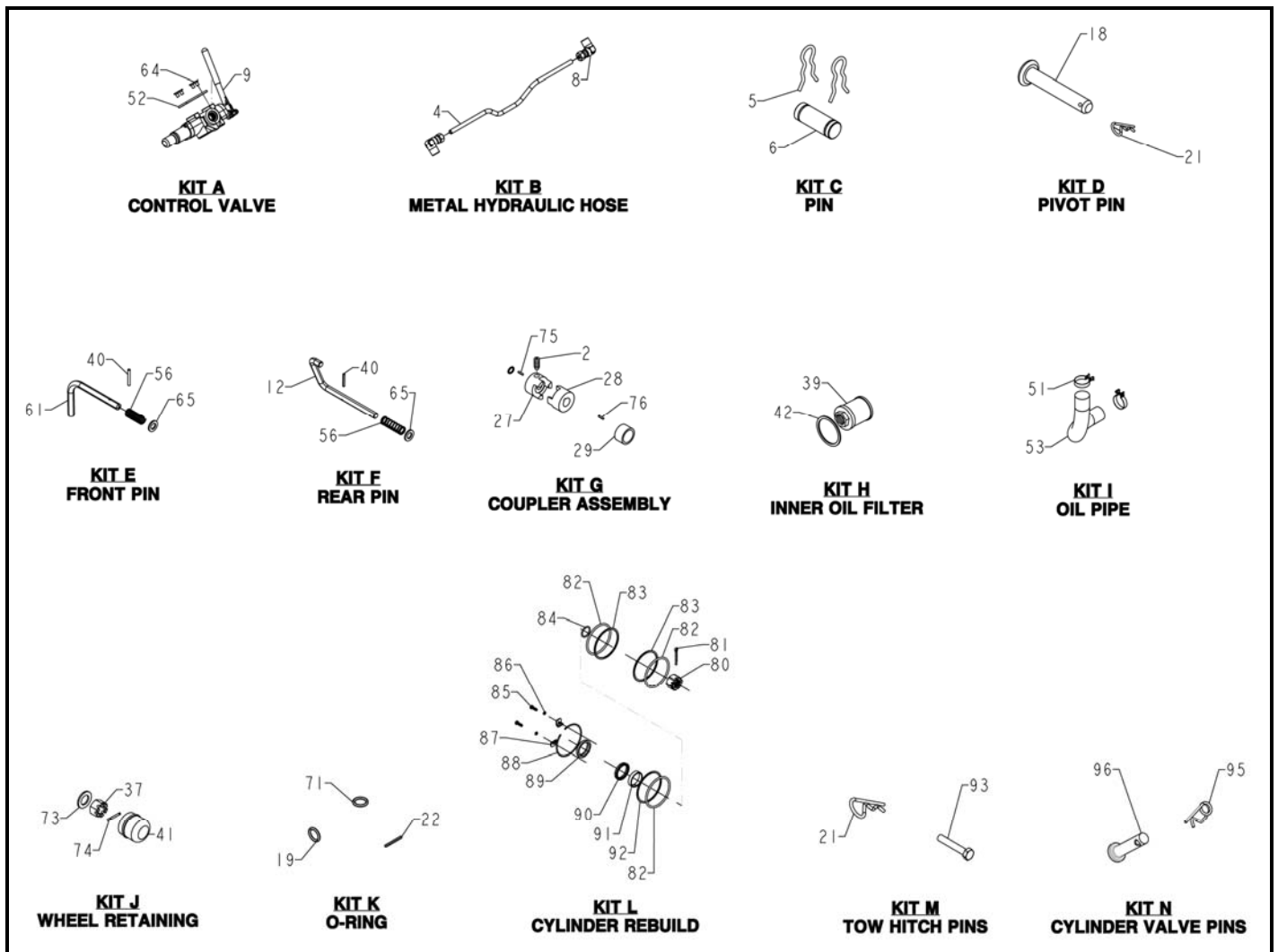
REF. NO.	DESCRIPTION	PART NO.	QTY
1	Screw, M5 x 0.8 x 10, Hex, Zinc, Grade 8.8	<i>Reference Only</i>	4
2	Screw, M6 x 1.0 x 10, Hex Set Cone Point, Black Oxide, Grade 4.8	Kit G	1
3	Cylinder, Powermate Orange	A203300	1
4	Tube, Metal Hydraulic	Kit B	1
5	Pin, ø5 Retaining	Kit C	2
6	Pin, Cylinder	Kit C	1
7	Hose, Hydraulic (Valve to External Filter)	A203301	1
8	Elbow, Compression	Kit B	2
9	Valve, One-Way Single Handle Control	Kit A	1
10	Connector, Combination	A203302	1
11	Elbow, 130°	A203303	1
12	Pin, Rear	Kit F	1
13	Lock Nut, M12 x 1.75, Hex, Nylon Insert, Zinc, Grade 4.8	<i>Reference Only</i>	6
14	Wedge	A203304	1
15	Screw, M12 x 1.75 x 65, Hex, Zinc, Grade 8.8	<i>Reference Only</i>	1
16	Hose, Hydraulic (Valve to Pump)	A203305	1
17	Assembly, Beam	A203306	1
18	Pin, Pivot	Kit D	1
19	O-Ring, ø11.2 x 2.4	Kit K	3
20	Plug, Oil	A203307	1
21	Pin, Cotter, ø12	Kit D & M	2
22	O-Ring, ø15.2 x 2.4	Kit K	1
23	Connector, Pump Outlet	A203308	1
24	Screw, M12 x 1.75 x 100, Hex, Zinc, Grade 8.8	<i>Reference Only</i>	2
25	Pump, Gear	A203309	1
26	Cap, Oil	A203310	1
27	Coupler, Gear Pump	Kit G	1
28	Coupler, Engine	Kit G	1
29	Bushing, Engine	Kit G	1
30	Stand, Gear Pump	A203311	1
31	Lock Nut, M8 x 1.25, Zinc, Grade 4.8	<i>Reference Only</i>	8
32	Lock Washer, M8	<i>Reference Only</i>	12
33	Engine, 208cc Horizontal Shaft	See Note A	1
34	Cover, Coupler	A203312	1
35	Assembly, Wheel	A203313	2
36	Flat Washer, M8	<i>Reference Only</i>	8
37	Nut, M20, Thin Hex Slotted	Kit J	2
38	Elbow, 90°	A203314	1
39	Filter, Inner Oil	Kit H	1
40	Pin, ø3 x 30 Spring	Kit E & F	2
41	Cap, Axle	Kit J	2
42	Gasket, Rubber	Kit H	1
43	Snap Ring, Wire, For Shaft	Kit G	1
44	Tank, Oil, with (2) A203336 50 x 300 Reflectors, Powermate Orange	A203315	1
45	Flat Washer, M6	<i>Reference Only</i>	6
46	Screw, M8 x 1.25 x 40, Hex, Zinc, Grade 8.8	<i>Reference Only</i>	4
47	Screw, M6 x 1.0 x 20, Hex, Zinc, Grade 8.8	<i>Reference Only</i>	6
48	Plate, Filter Fixed	A203316	1
49	Filter, Outer Oil	A203317	1
50	Connector	A203318	1

Unit Assembly (continued)

REF. NO.	DESCRIPTION	PART NO.	QTY
51	Clamp, Hose	Kit I	2
52	Plate	Kit A	1
53	Pipe, Oil	Kit I	1
54	Pin, Lock	A203319	1
55	Screw, M10 x 1.5 x 95, Hex, Zinc, Grade 8.8	<i>Reference Only</i>	1
56	Spring	Kit E & F	2
57	Screw, M8 x 1.25 x 25, Hex, Zinc, Grade 8.8	<i>Reference Only</i>	4
58	Leg, Front Support	A203320	1
59	Flat Washer, M10	<i>Reference Only</i>	1
60	Lock Nut, M10 x 1.5, Hex, Nylon Insert, Zinc, Grade 4.8	<i>Reference Only</i>	1
61	Pin, Front	Kit E	1
62	Tow Bar, 2" Ball Diameter	A203321	1
63	Assembly, Chain	A203322	2
64	Screw, M8 x 1.25 x 10, Cross, Zinc, Grade 4.8	Kit A	4
65	Flat Washer, M12	Kit E & F	8
66	Coupler	A203323	1
67	Screw, M12 x 1.75 x 80, Hex, Zinc, Grade 8.8	<i>Reference Only</i>	2
68	Flat Washer, M12 x 32 x 4	<i>Reference Only</i>	2
69	Screw, M12 x 1.75 x 90, Hex, Zinc, Grade 8.8	<i>Reference Only</i>	1
70	Lock Washer, M6	<i>Reference Only</i>	6
71	O-Ring, $\varnothing 17 \times 2.5$	Kit K	2
72	Screw, M8 x 1.25 x 30, Hex, Zinc, Grade 8.8	<i>Reference Only</i>	4
73	Flat Washer, M20	Kit J	2
74	Pin, Cotter, $\varnothing 4 \times 36$	Kit J	2
75	Key, Gear Pump, 3.2 x 3.2 x 25 C1045 Steel	Kit G	1
76	Key, Engine, 4.78 x 4.78 x 44.5 C1045 Steel	Kit G	1
77	Housing, Filter	A203338	1
78	Bearing, Tapered Roller	A203339	4
79	Seal, Oil	A203340	2
80	Nut, Slotted	Kit L	1
81	Pin, Cotter	Kit L	1
82	O-Ring, $\varnothing 95 \times 5.3$	Kit L	3
83	Ring, Snap	Kit L	2
84	O-Ring, $\varnothing 30 \times 3.55$	Kit L	1
85	Bolt, Hex	Kit L	1
86	Lock Washer	Kit L	1
87	Bracket, Retaining	Kit L	1
88	Ring, Snap	Kit L	1
89	Ring, Dust	Kit L	1
90	Ring, Seal	Kit L	1
91	Ring, Guide	Kit L	1
92	Ring, Snap	Kit L	1
93	Pin, Tow Hitch	Kit M	1
94	Tank, Oil, with (2) A203336 50 x 300 Reflectors, Powermate Orange	A203774	1
95	Pin, Snap	Kit N	1
96	Pin, Cylinder Valve	Kit N	1

Note A: Consult the accompanying engine manual or contact our service department at 1-800-558-5402 for assistance.

Kits



REF. NO.	DESCRIPTION	PART NO.	QTY
A	Kit, Control Valve	A203324	1
B	Kit, Metal Hydraulic Hose	A203325	1
C	Kit, Pin	A203326	1
D	Kit, Pivot Pin	A203327	1
E	Kit, Front Pin	A203328	1
F	Kit, Rear Pin	A203329	1
G	Kit, Coupler Assembly	A203330	1
H	Kit, Inner Oil Filter	A203331	1
I	Kit, Oil Pipe	A203332	1
J	Kit, Wheel Retaining	A203333	1
K	Kit, O-Ring	A203334	1
L	Kit, Cylinder Rebuild	A203335	1
M	Kit, Tow Hitch Pins	A203446	1
N	Kit, Cylinder Valve Pins	A203873	1


Decal Kit

Hydraulic Oil

Use 10W AW32 or ISO 32 type.

Vertical Splitting

1. Pull front safety pin to release beam.
2. Rotate beam to vertical position.
3. Pull rear lock pin and rotate to 9:00 o'clock position to secure beam.




NOTICE

Keep the beam clean and free of debris to avoid damage to log splitter

WARNING


Pinch Hazard

Avoid hand injury. Lock support leg in the down position by inserting pin prior to splitting.




WARNING

Read and follow operating instructions before operating log splitter.




Hydraulic fluid injection hazard

- High pressure fluid escaping from a small hole can penetrate skin causing serious injury.
- Avoid contact with escaping fluids.
- Check for leaks using paper, never your hands.



Burn Hazard


Avoid skin burn



- Hydraulic cylinder and other components can become very hot.
- Avoid contact.
- Wear gloves when operating.

Impact or Pinch Hazard


- Keep bystanders at least 10 feet away.
- Only one person should operate and load the log splitter, staying within the designated operator zone.



Overturn and Slope hazard

Avoid personal injury

- Do not operate or transport log splitter on slopes greater than 5 degrees.
- Block wheels to prevent movement and lock beam in the horizontal or vertical position.



Operating Instructions


1. Wear ANSI approved safety gloves, glasses and footwear.
2. Position splitter on a flat surface with wheels blocked.
3. After ensuring proper fluid levels, start engine and advance throttle.
4. Position log onto beam and against the endplate. **NOTICE:** Always split wood in the direction of the grain and hold the log by its sides when loading.
5. Push control valve handle FORWARD to split log.
6. Push control valve handle BACKWARD to return wedge to its original position.

WARNING

Crush Hazard

Avoid hand injury.


- When pivoting beam to horizontal position, keep hands away from beam stop.
- Ensure pin completely locks beam before splitting or towing.



WARNING

Avoid serious injury or death while towing

- Read and follow operator manual instructions for correct attachment and towing.
- Ensure the correct ball size of 2 inch is on the towing vehicle.
- Ensure safety chains are correctly attached prior to towing.
- Do NOT exceed a maximum towing speed of 45 MPH.




WARNING

Crush Hazard


Avoid injury

Keep arms and hands away from moving parts.



CONTROL LEVER OPERATION

Split Log ← Neutral → Return



REF. NO.	DESCRIPTION	PART NO.	QTY
1	Decal Kit	A203337	1