



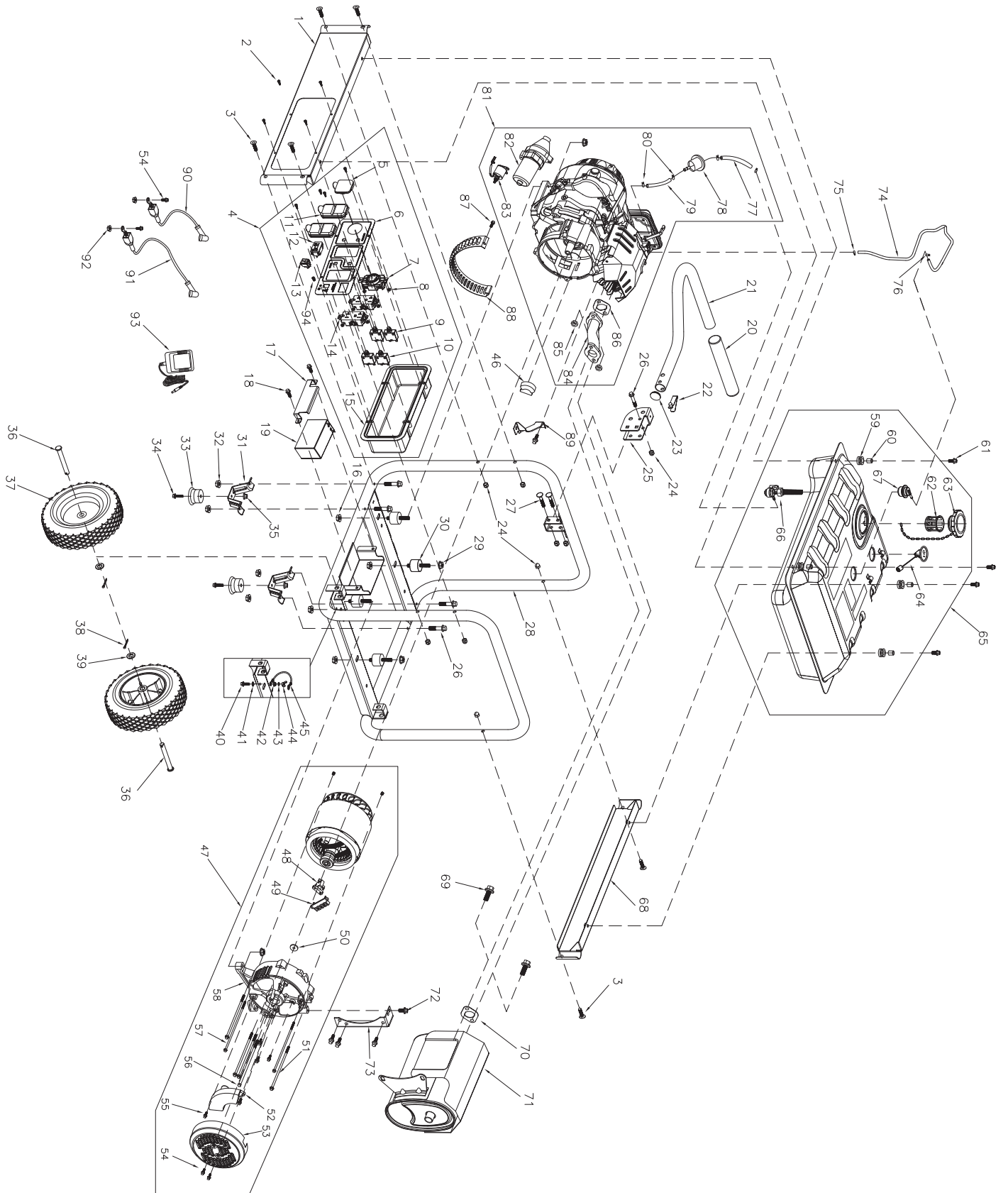
Parts Manual

GP7500E 420cc (Model 0059435)

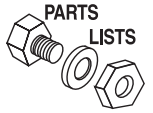
GP8000E 420cc (Model 0065140)

NOTICE!

The information in this manual is known to be accurate as of the date of release shown on the cover. However, engineering changes can occur without notice. To obtain the proper parts, please be sure to use the serial number of the unit being serviced when ordering from this manual. Always refer to any parts notes and changes before ordering. All other parts not shown in this manual can be found on Generac's exploded view drawings online on GENservice at www.generac.com.



GP7500E & GP8000E



Item	Part #	Qty	Description
1	0H97480ST03	1	PANEL, RAIL C/PNL SIDE GP
2	0G8382	8	SCREW, PAN M5 X 16
3	0H1780	6	BOLT, CURVED HEAD(M8X40)
4	0H9775E	1	PANEL ASSY. CONTROL
5	0G9391	1	COVER,30A 120/240V
6	0J4536A	1	FACE PLATE, CONTROL PANEL
7	0G8758	1	OUTLET 30A 120/250V SP-CGR
8	0J86620108	6	NUT, M4
9	0H0265E	2	BREAKER, CIRCUIT (30A)
10	0H0265C	2	BREAKER, CIRCUIT (20A)
11	0G9392	2	COVER, 20A 120V GFCI/DU-PLEX
12	0G8321	1	METER, HOUR
13	0J0251	1	SW START-RUN-STOP GP
14	0D4968	2	OUTLET, 20A, 120V
15	0G9756A	1	COVER, BACK PANEL
16	067989	4	NUT, M8
17	0J06940ST15	1	COVER, BATTERY
18	0G84420194	3	BOLT, M6X12
19	0G9449	1	BATTERY
20	0G8442C113	1	GRIP, HANDLE
21	0H97560ST15	1	HANDLE, PMS159C
22	0J5347	1	BUTTON, SNAP
23	0H9760	1	CAP END NYLON BLACK
24	0H1782	9	CAP, NUT LOCKING, M8
25	0H97670ST15	1	BRACKET, PMS159C
26	073144	5	BOLT, M8X45
27	0H1781	2	BOLT, CARRIAGE HEAD M8X46
28	0J02500ST15	1	ASSEMBLY FRAME GP 7500E
29	0G84420107	4	NUT, M10
30	0K09150110	4	MOUNT, RUBBER VIBRATION
31	0K0097	2	FOOT, BENT(FRAME)
32	0K0098	4	NUT, M8
33	0K0099	2	FOOT, RUBBER
34	0K0100	2	BOLT,M6X28
35	0K0105	2	NUT,M6
36	0H0204	2	PIN, AXLE

Item	Part #	Qty	Description
37	0G8651	2	WHEEL
38	0D4999	2	PIN, COTTER
39	022304	2	WASHER, FLAT 13X2
40	0J35220156	1	BOLT, M6X20
41	0K0093	1	WASHER, LOCK, SPECIAL
42	0G84420272	1	NUT,M6
43	0J47870118	1	WASHER, FLAT
44	0K0094	1	NUT, M6
45	0K0092	1	WIRE ASSY., GROUND
46	0J86620104	1	CAP, PLATE GAURD
47	0K0755	1	ALTERNATOR ASSY.
48	0H0919	1	BRUSH, ALTERNATOR
49	0J6072	1	TERMINAL
50	070264	1	WASHER, FLAT
51	0H9838C112	2	BOLT,M5X232
52	0H2579B	1	AVR
53	0H3049	1	COVER ALTERNATOR INLET
54	0J4967	8	BOLT, M5X12
55	0J4968	3	BOLT, M5X16
56	0H92090104	1	BOLT, M10X285
57	0H92090105	4	BOLT, M6X193
58	0H91980171	1	HOUSING, RR BEARING CARRIER
59	0H1411B	4	RUBBER,FUEL TANK
60	0H1610A	4	ANTI-CRUSH 10.8OD 9ID 10LG
61	0E9507B	4	BOLT,M8X25
62	0H1326	1	FILTER, FUEL
63	0H0958	1	CAP, FUEL
64	0H9005A	1	FUEL GAUGE 150LG
65	0H7591A	1	TANK, FUEL, 8GAL
66	0J0974	1	VALVE FUEL SHUTOFF
67	0J7921	1	ASSEMBLY ROLL OVER VALVE
68	0H9749AST03	1	RAIL, BACK, BLACK
69	0E9507B	2	BOLT, M8X25
70	0J4691	1	GASKET,EXHAUST,MUFFLER
71	0H9763B	1	MUFFLER
72	0E9470	4	BOLT,M8X16
73	0G8542	1	BRACKET, MUFFLER
74	0H9838C111	1	HOSE, ROLL OVER VALVE (ROV)



GP7500E & GP8000E

Item	Part #	Qty	Description
75	0H9838C110	1	CLAMP, 012
76	0J35220174	1	CLAMP, 010
77	0G9757A	1	HOSE, FUEL, 08X55
78	0G9914	1	FILTER, FUEL
79	0G9757B	1	HOSE.FUEL 08X80
80	048031B	4	CLAMP, HOSE, 09
81	0H9838C	1	ENGINE 420 ES W/O MFLR EPA PH3
82	0H98380101	1	MOTOR, STARTER
83	0H98380102	1	CONTACTOR ASSY,(ELECT. START)
84	0J4535A	1	MANIFOLD EXHAUST GP5- 7.5E
85	0J35220161	2	NUT, M8
86	0G9028	1	GASKET, EXHAUST, CYLIN- DER
87	0J00620100	1	BOLT, M5X10
88	0H9761	1	ALTERNATOR SCROLL
89	0G8442C112	1	BRACKET, AIR CLEANER
90	0J4157B	1	WIRE ASSY,BATT POS,RED
91	0J4157A	1	WIRE ASSY,BATT NEG,GRN
92	0H3535	2	NUT, M5
93	0G5744	1	CHARGER, BATTERY
94	0J4959	1	INPUT, BATTERY CHARGER

©2012 Generac Power Systems, Inc. All rights reserved.
Specifications are subject to change without notice
No reproduction allowed in any form without prior written consent from Generac Power Systems, Inc.